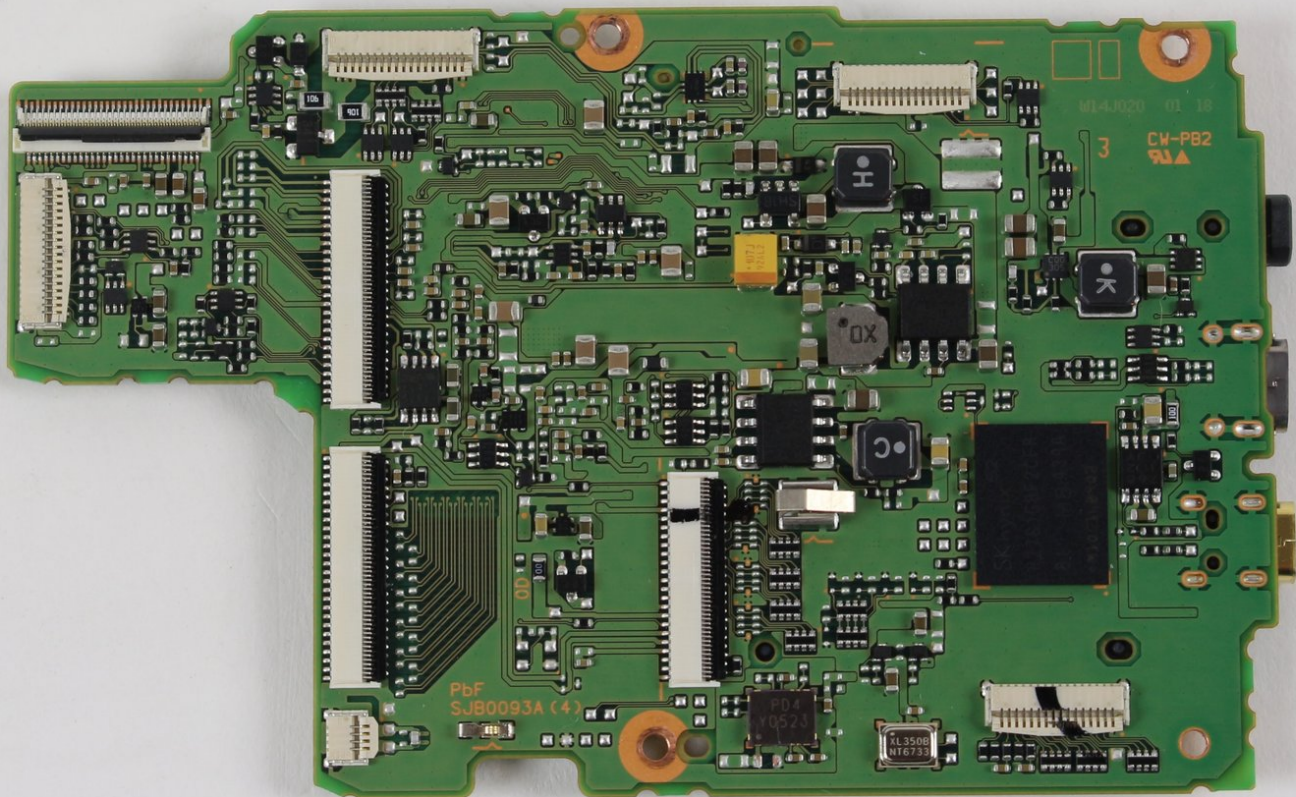




# Panasonic Lumix DMC-FZ1000 Motherboard Replacement

Replace a faulty motherboard with a functional one.

Written By: Robseth Taas



---

## INTRODUCTION

If your camera begins malfunctioning, you may need to replace your motherboard. In this replacement guide you will first remove the battery to avoid getting shocked while working inside the camera. Then you will remove the back panel, unscrew several screws, and detach several electronic ZIF connector ribbons to replace the motherboard. See [this technique on disconnecting ZIF connectors](#) to better learn how to detach a ZIF connector ribbon.




### TOOLS:

- [Phillips #00 Screwdriver](#) (1)
  - [Spudger](#) (1)
-

## Step 1 — Battery



- Slide the switch on the bottom of your camera from the right (LOCK) to the left (OPEN).

 The battery door will swing open.

## Step 2



- Pull down on the lever that holds the battery.

 The battery will pop out of its casing.



## Step 3



- Pull out the battery.

## Step 4 — Motherboard



- Push in on the SD card inside the battery housing.
  - ❗ The SD card will pop out.
- Pull out the SD card.
- Close the battery housing door.

## Step 5



- Remove the two 5.2 mm Phillips #00 screws that are 1) below the label and 2) above the tripod mount hole on the bottom of the camera.
  - ⓘ You may ignore the screw below the tripod mount hole.
- Remove the two 5.5 mm Phillips #00 screws on the side of the camera with the MIC jack.
- Remove the two 7.0 mm Phillips #00 screws that are 1) above and 2) below the HDMI panel.
  - ⓘ You may ignore the screw that goes through the leather material to the right of the HDMI panel.


## Step 6




- There are two screws that hold the eye piece on to the main housing, just underneath. Remove these. Once these have been removed, gently pull and remove the eye piece and remove the now accessible top two screws.

## Step 7



 Do not yank off the back plate. If you do, you will tear the electronic ribbons attached to the inside of the camera and the back plate.

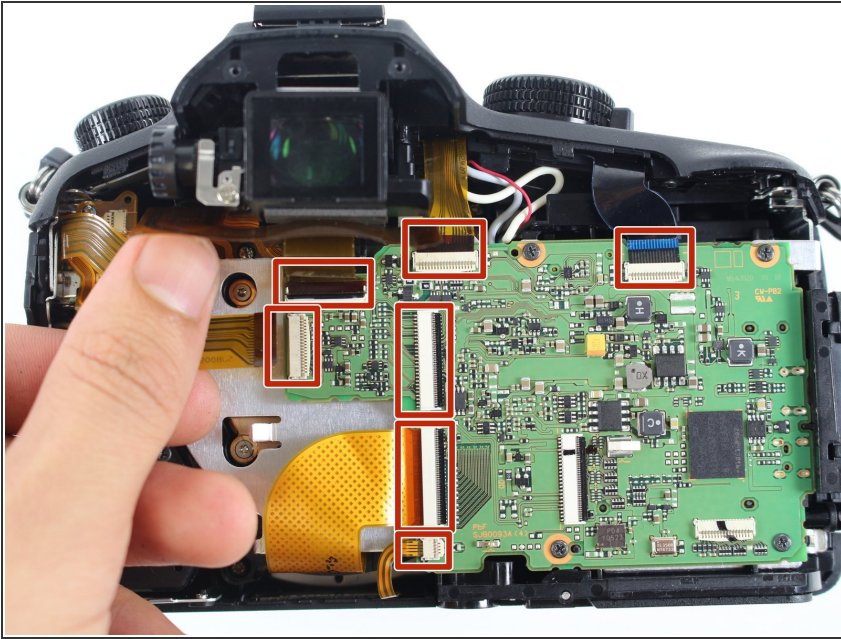
- Gently lift up the back plate, being careful not to damage any ribbons.


 Do not yank out the electronic ribbons attached to the motherboard and the back plate, or you may damage them. To properly detach these ZIF connector ribbons, see [this technique on disconnecting ZIF connectors](#).

- Pull to disconnect from the motherboard the two ZIF connector ribbons attached to the back plate.
- Set aside the back plate.



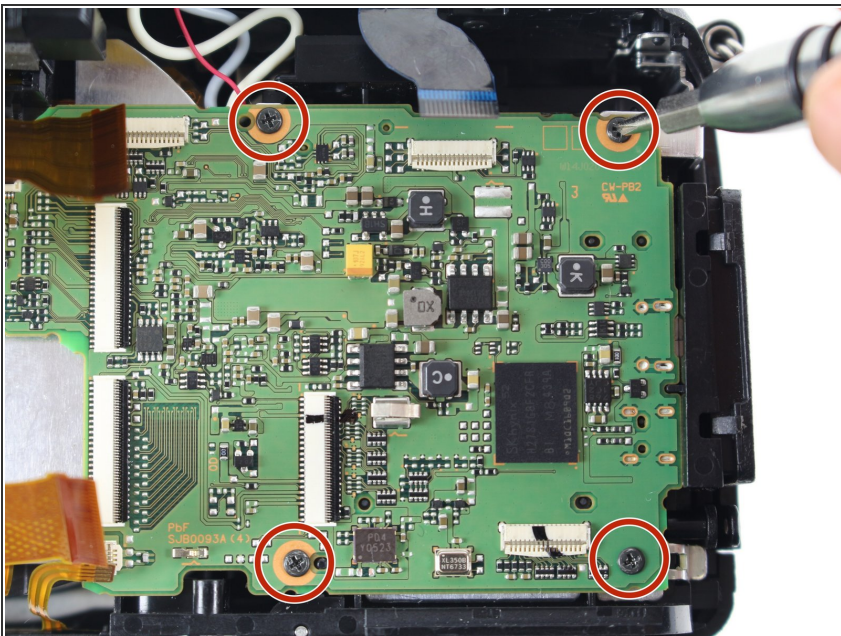
## Step 8



 Do not yank out the electronic ribbons attached to the motherboard, or you may damage them. To properly detach these ZIF connector ribbons, see [this technique on disconnecting ZIF connectors](#).

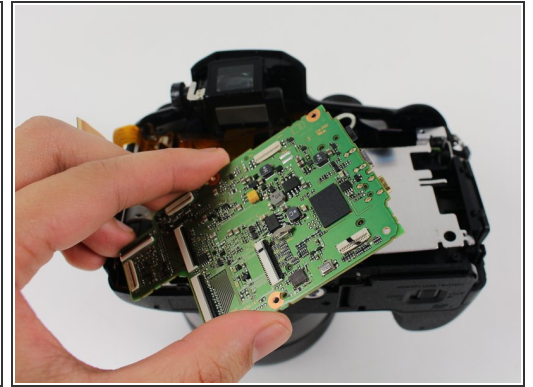
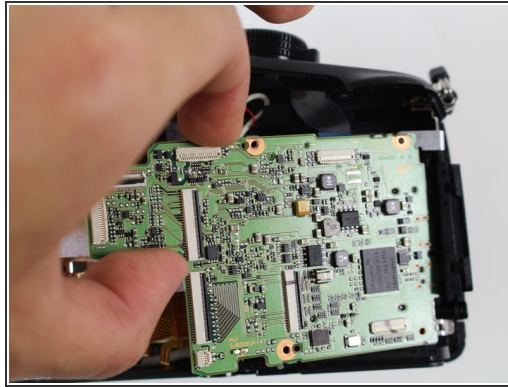
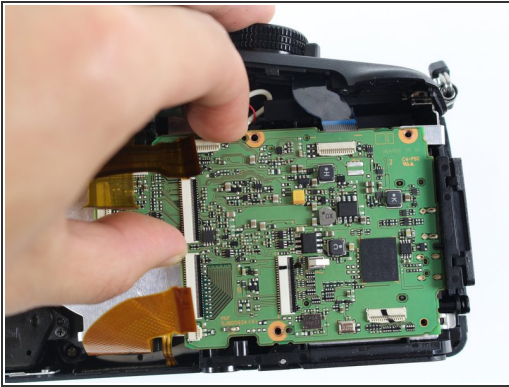
- Pull to disconnect from the motherboard the seven ZIF connector ribbons.

## Step 9



- Remove the four 5.2 mm Phillips #00 screws at the corners of the motherboard.

## Step 10



- Firmly grasp the left side of the motherboard.
  - Pull out the motherboard.
- i** If you find it difficult to remove the motherboard, pull it away from the HDMI panel while pulling it out.

To reassemble your device, follow these instructions in reverse order.