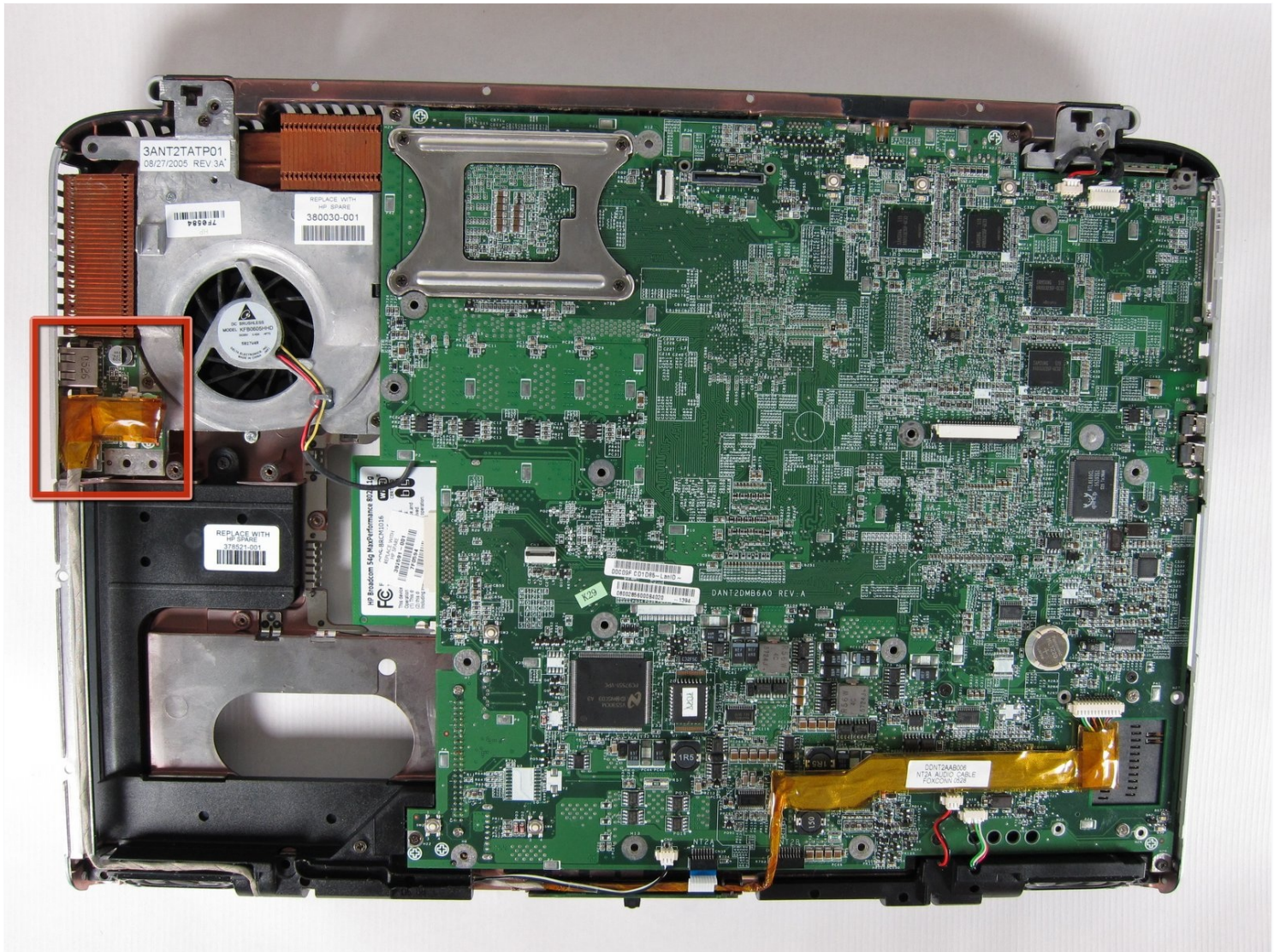




HP Pavilion zd8000 USB Module Replacement

Written By: Allie Menard



TOOLS:

Paper Clip (1)

Phillips #00 Screwdriver (1)

Phillips #1 Screwdriver (1)

Spudger (1)

Tweezers (1)

Step 1 — Battery



- Slide the battery release latch towards you.

Step 2



- Pull up on the battery to remove it.

Step 3 — RAM



- Loosen the Phillips screw labeled 'ram' and lift the cover.

Step 4



- Locate the green RAM card and find the metal tabs securing the card.
- Push outwards on the two tabs to release the card.

Step 5



- Carefully slide the card out at an upward angle away from the slot.

Step 6 — WiFi Card Cables



- Unscrew the four 8mm Philips screws marked with an icon resembling a stacks of discs.
- Lift the cover from the right to remove it.

Step 7



- Use [tweezers](#) to detach the grey and black cables connected to the green WiFi card.

Step 8 — CD/Optical Drive



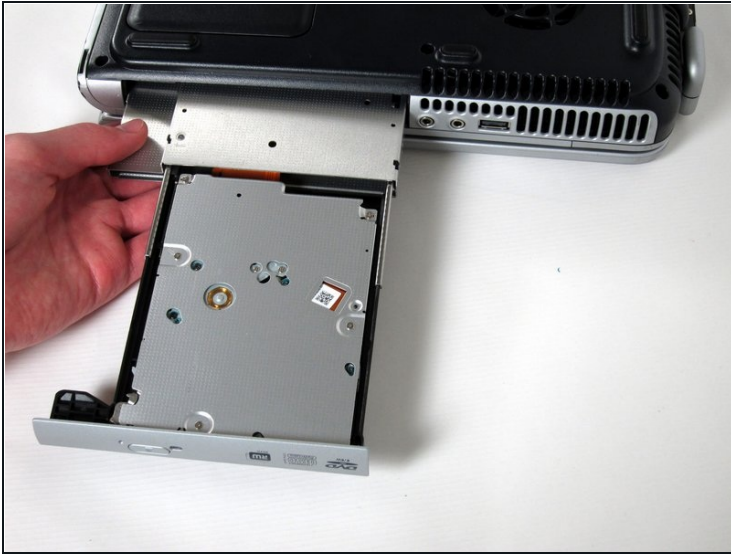
- Remove the 8mm Philips screw located between the hard drive and the WiFi card.

Step 9



- Turn the laptop 90 degrees clockwise so you are facing the CD drive.
- Unbend a paperclip and insert the end into the small hole by the eject button to cause the tray to pop out towards you.

Step 10



- Gently pull the tray away from the laptop and the rest of the optical drive will follow.

Step 11 — Keyboard



- Remove the two 8mm Philips screws marked “K” on the bottom of the laptop.

Step 12



- Flip the laptop over and open the screen.
- Push up on the four latches located at the top of the keyboard with the spudger to release them.

Step 13



⚠ Lift the keyboard carefully because it is attached to the motherboard by a ribbon cable.

- Lift the top of the keyboard towards you. Then, while keeping the keyboard at an angle, lift it towards the display.

Step 14



- Rotate the keyboard so that the bottom is visible.
- With the keyboard lifted, locate the blue-striped tab on the underside of the black ribbon cable.
- Pull the tab towards you to release the keyboard from the laptop.

Step 15 — Switch Cover



- Place the laptop face-down and rotate it 180 degrees so the vents are facing you.
- Remove the five 8mm Philips screws. Three are on the black base and two are near the hinges.

Step 16



- Flip the laptop over.
- Fully open the laptop.

Step 17

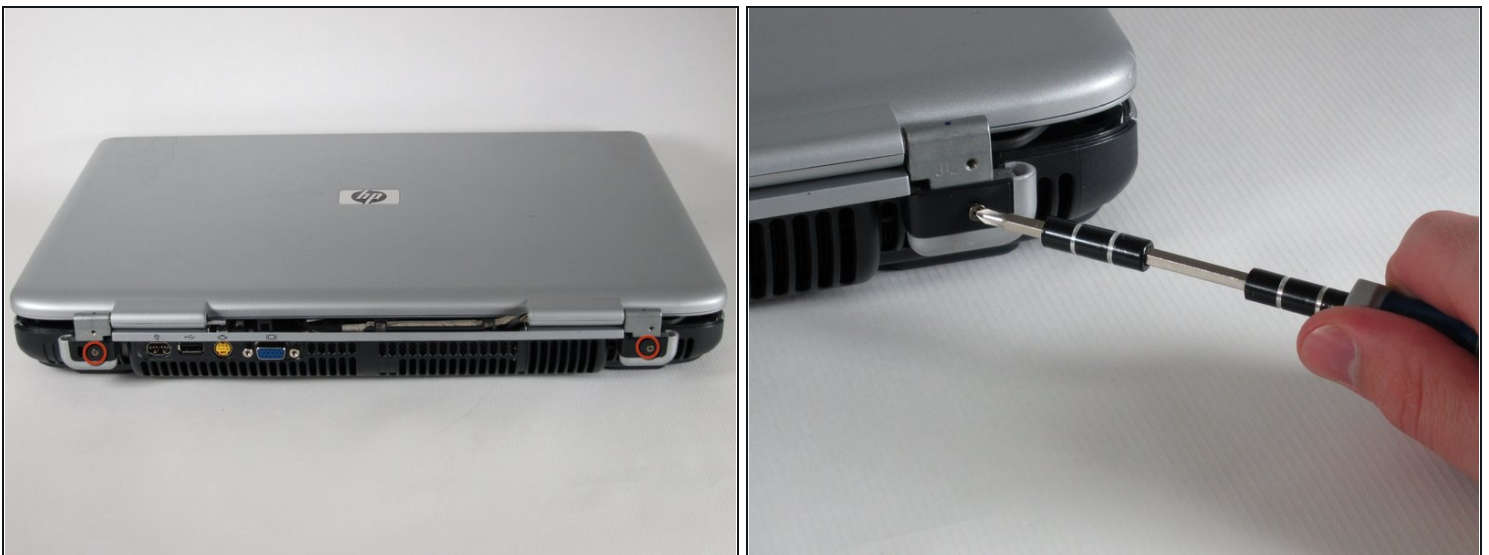


- Rotate it so the display is on your right and the keyboard is on your left.

⚠ Lift the switch cover firmly but slowly so you do not snap it.

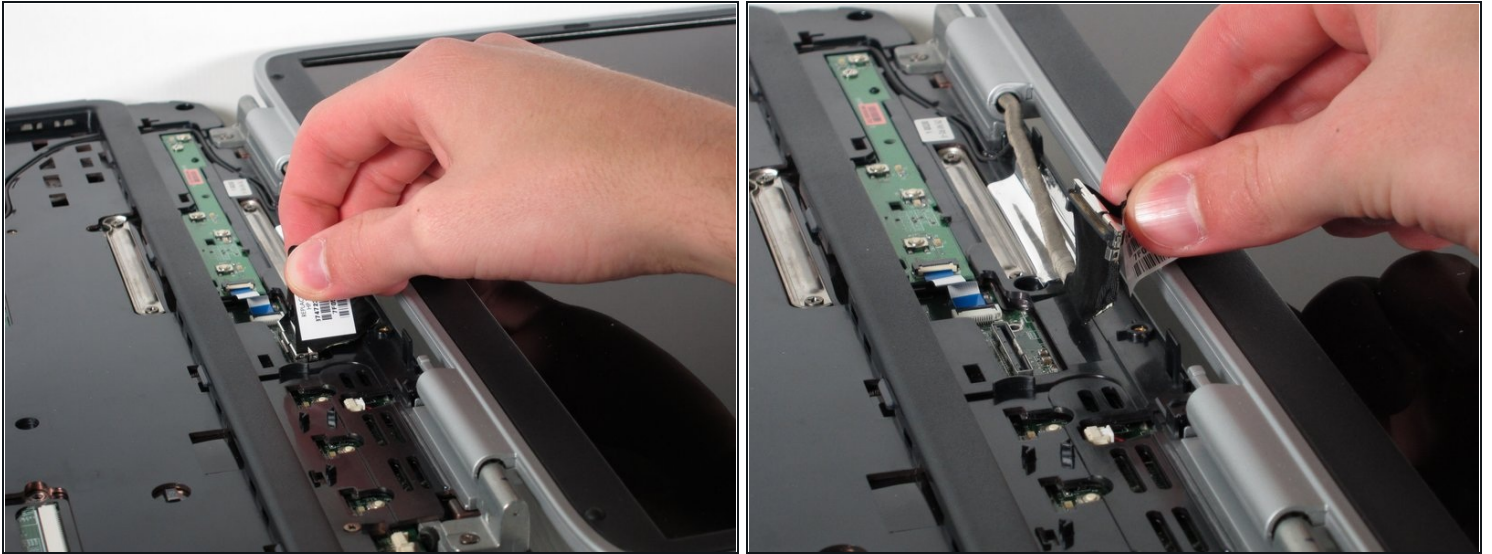
- Lift the switch cover carefully from one end while sliding the spudger between the switch cover and the laptop to separate them.
- The switch cover should easily separate from the laptop as you run the spudger through.

Step 18 — Screen



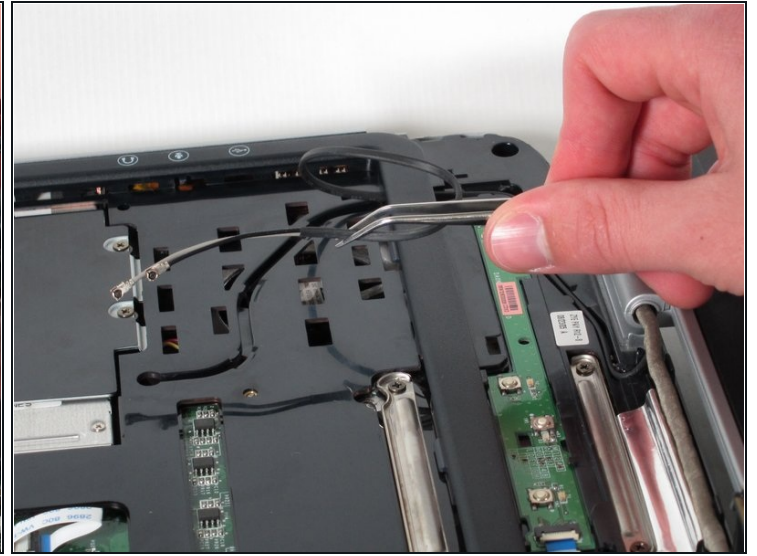
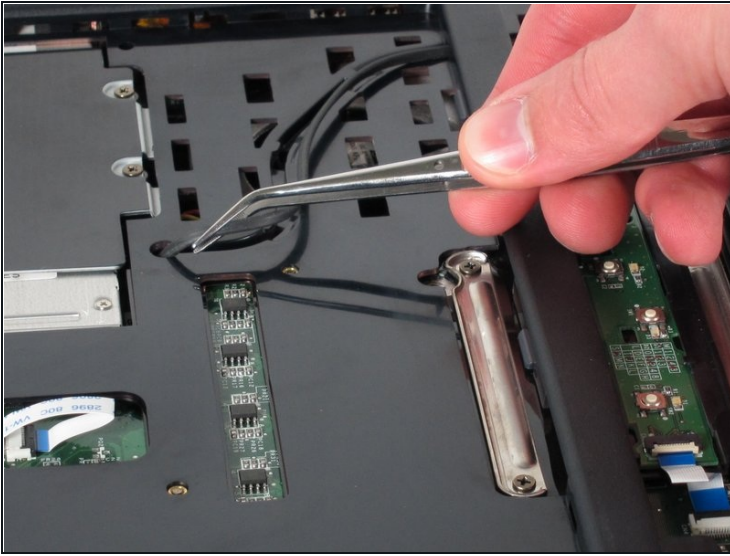
- Close the lid and rotate the laptop so that the vents are facing you.
- Unscrew the two 8mm Philips screws below the hinges.

Step 19



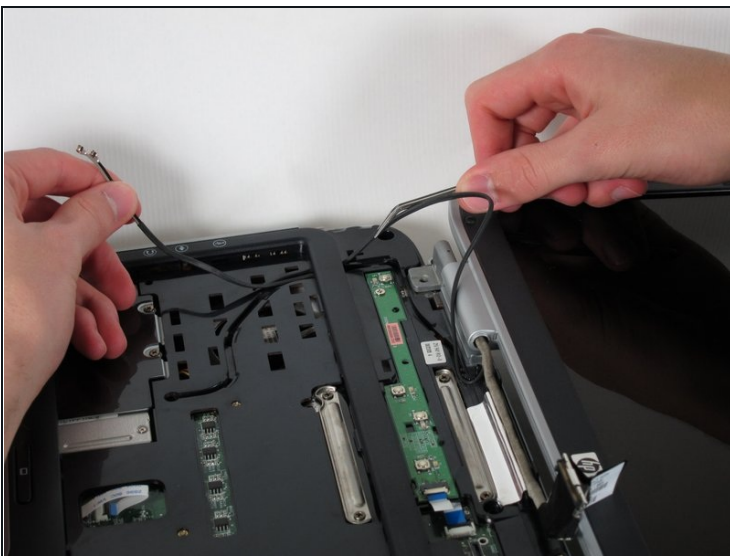
- Carefully rotate the laptop 90 degrees counter-clockwise and open the screen.
- Pull on the black tab with the HP service sticker to unplug the display from the motherboard.

Step 20



- Using [tweezers](#), remove the black cable from the hole leading to the WiFi enclosure.
- Pull gently to remove the black and grey cables from the case.
- ① Check the surface beneath the laptop to ensure the cables do not catch on anything when you flip the laptop over.

Step 21



- Using tweezers, pull the black cable towards the display and through the hole in the casing.

Step 22



- Unscrew the two 8mm Philips screws that attach the hinge to the laptop's display.
- Lift the screen upwards to detach it from the laptop.

Step 23 — Top Cover



- With the laptop face-down, remove the eleven 8mm Philips screws.

Step 24



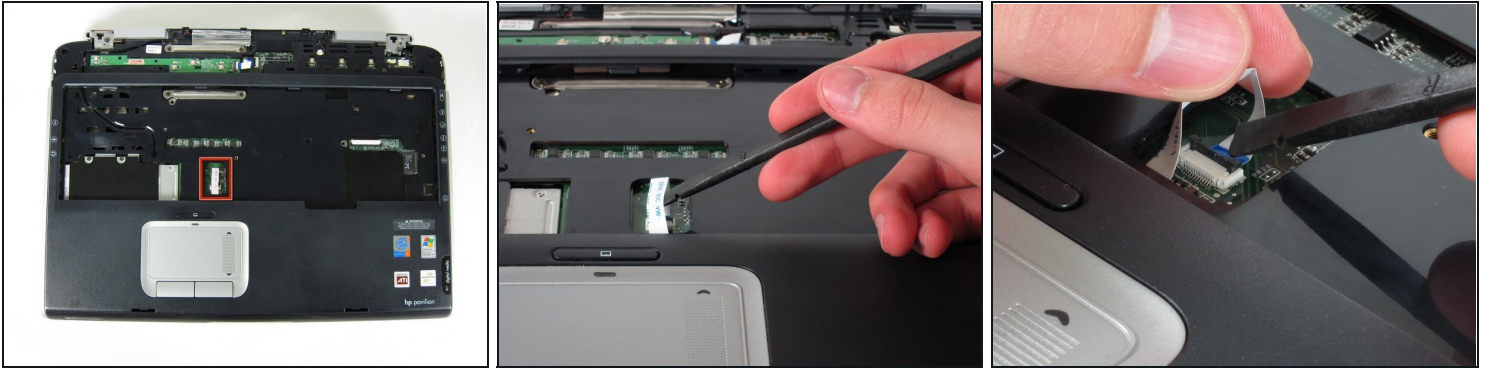
- Rotate the laptop 180 degrees so the vents are facing you.
- Unscrew the four 3mm Philips screws below the vents.

Step 25



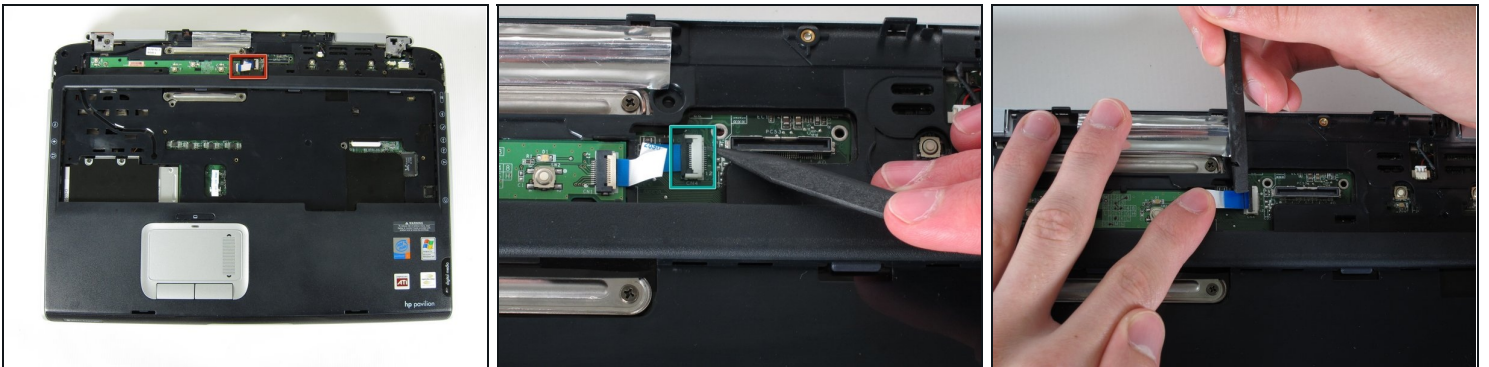
- Rotate the laptop 90 degrees counter-clockwise.
- Unscrew the two 3mm Philips screws from the optical drive bay.

Step 26



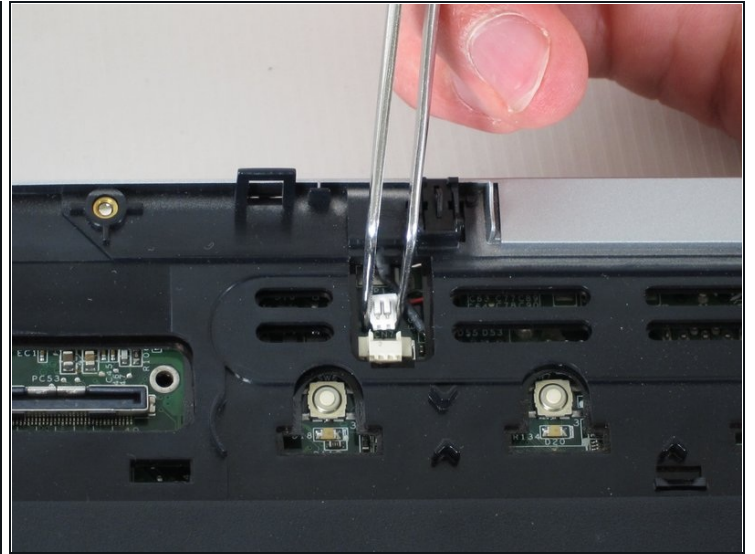
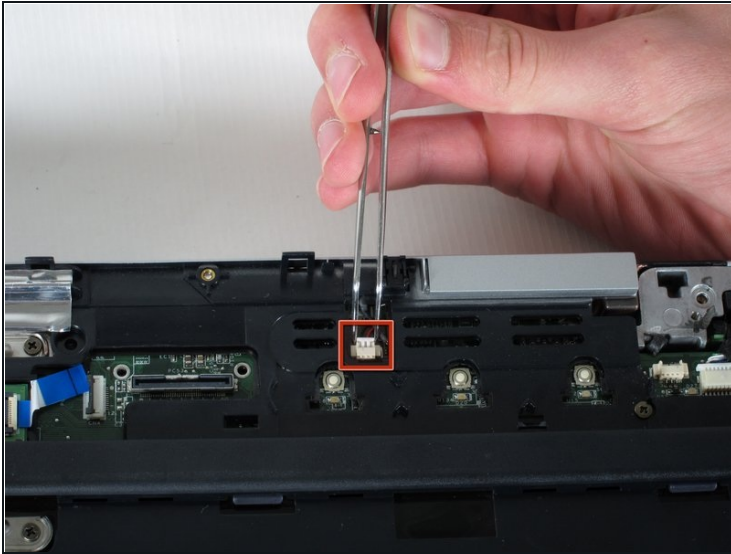
- Flip the laptop over so it is face-up with the trackpad closest to you.
- Locate the ribbon cable directly above the track pad.
- Find the black latch at the end of the ribbon cable and unlatch it with a spudger to release it.

Step 27



- Find the ribbon cable on the LED board located at the top of the laptop.
- You will notice that the ribbon cable is connected to two levels - you will be dealing with the one on the lower level.
- Find the black latch at the end of the ribbon cable and unlatch it with a spudger to release it.

Step 28



- Locate the white connector attached to a red and black cable to the right of the LED board.
- Using [tweezers](#), pull the white connector away from you.

Step 29



- Unscrew the four 8mm Philips screws from the top cover.

Step 30



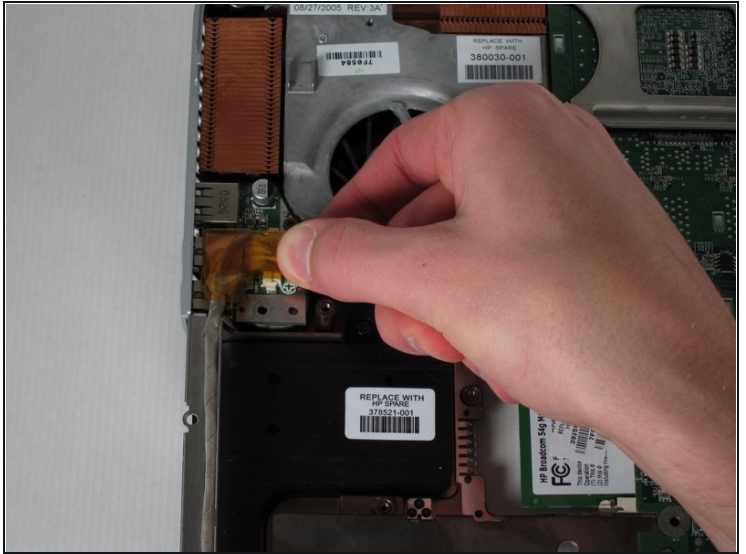
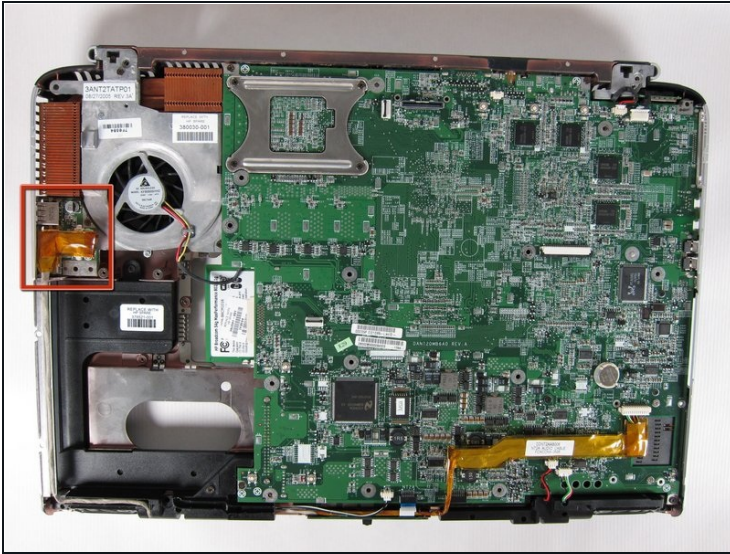
- Rotate the computer 90 degrees clockwise and insert the spudger at the seam above the card reader.
- While lifting the front end of the top cover, slide the spudger across the seam.
- When you have reached the firewire port, it should click open.

Step 31



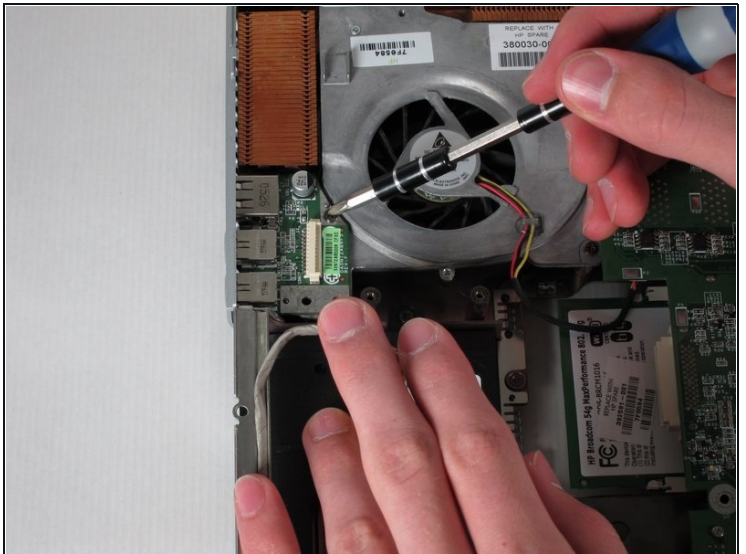
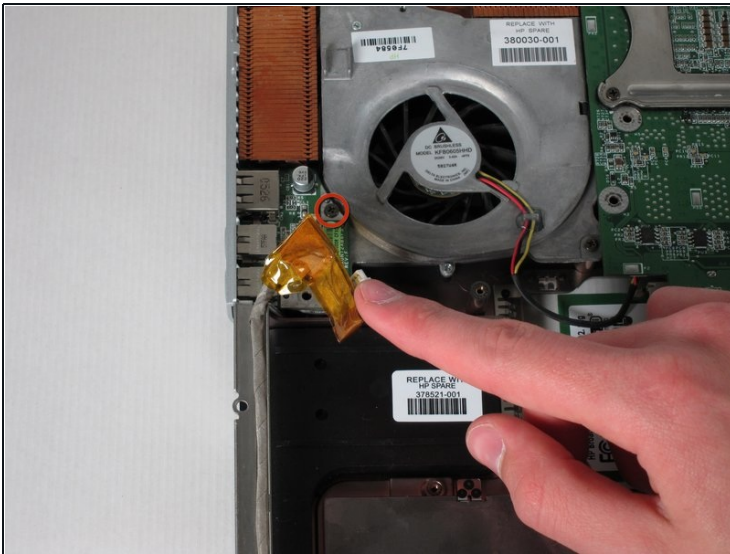
- Lift the top cover from the left side to remove it completely.

Step 32 — USB Module



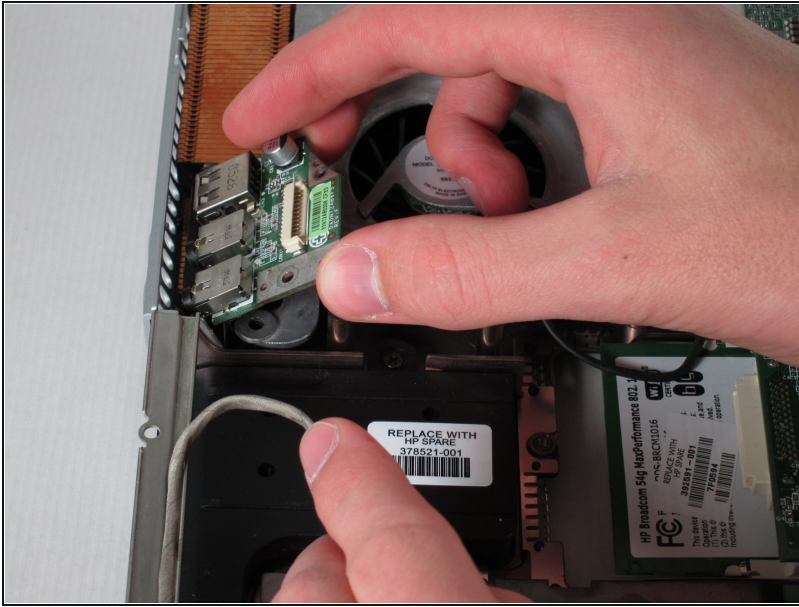
- Rotate the laptop 90 degrees counter-clockwise
- Locate the USB Module
- Grip the yellow cable cover and pull it to the right to release it.

Step 33



- Unscrew the 6mm Philips screw connecting the USB module to the fan.

Step 34



- Pull the module to the right and lift it out to release it.

To reassemble your device, follow these instructions in reverse order.