



HP Pavilion zd8000 Screen Replacement

Written By: Allie Menard





TOOLS:

- [Phillips #00 Screwdriver](#) (1)
 - [Phillips #1 Screwdriver](#) (1)
 - [Spudger](#) (1)
 - [Tweezers](#) (1)
-

Step 1 — Battery



- Slide the battery release latch towards you.

Step 2



- Pull up on the battery to remove it.

Step 3 — WiFi Card Cables



- Unscrew the four 8mm Philips screws marked with an icon resembling a stacks of discs.
- Lift the cover from the right to remove it.

Step 4



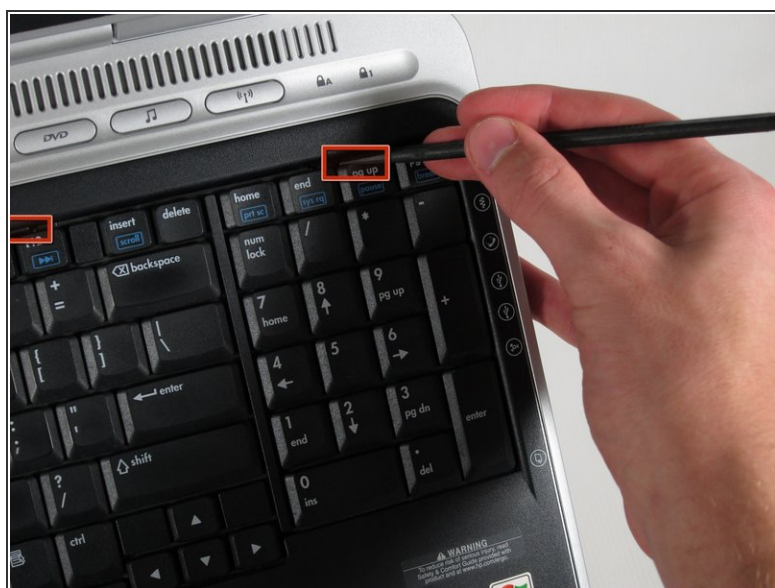
- Use tweezers to detach the grey and black cables connected to the green WiFi card.

Step 5 — Keyboard



- Remove the two 8mm Philips screws marked “K” on the bottom of the laptop.

Step 6



- Flip the laptop over and open the screen.
- Push up on the four latches located at the top of the keyboard with the spudger to release them.

Step 7



 Lift the keyboard carefully because it is attached to the motherboard by a ribbon cable.

- Lift the top of the keyboard towards you. Then, while keeping the keyboard at an angle, lift it towards the display.

Step 8



- Rotate the keyboard so that the bottom is visible.
- With the keyboard lifted, locate the blue-striped tab on the underside of the black ribbon cable.
- Pull the tab towards you to release the keyboard from the laptop.

Step 9 — Switch Cover



- Place the laptop face-down and rotate it 180 degrees so the vents are facing you.
- Remove the five 8mm Philips screws. Three are on the black base and two are near the hinges.

Step 10




- Flip the laptop over.
- Fully open the laptop.

Step 11

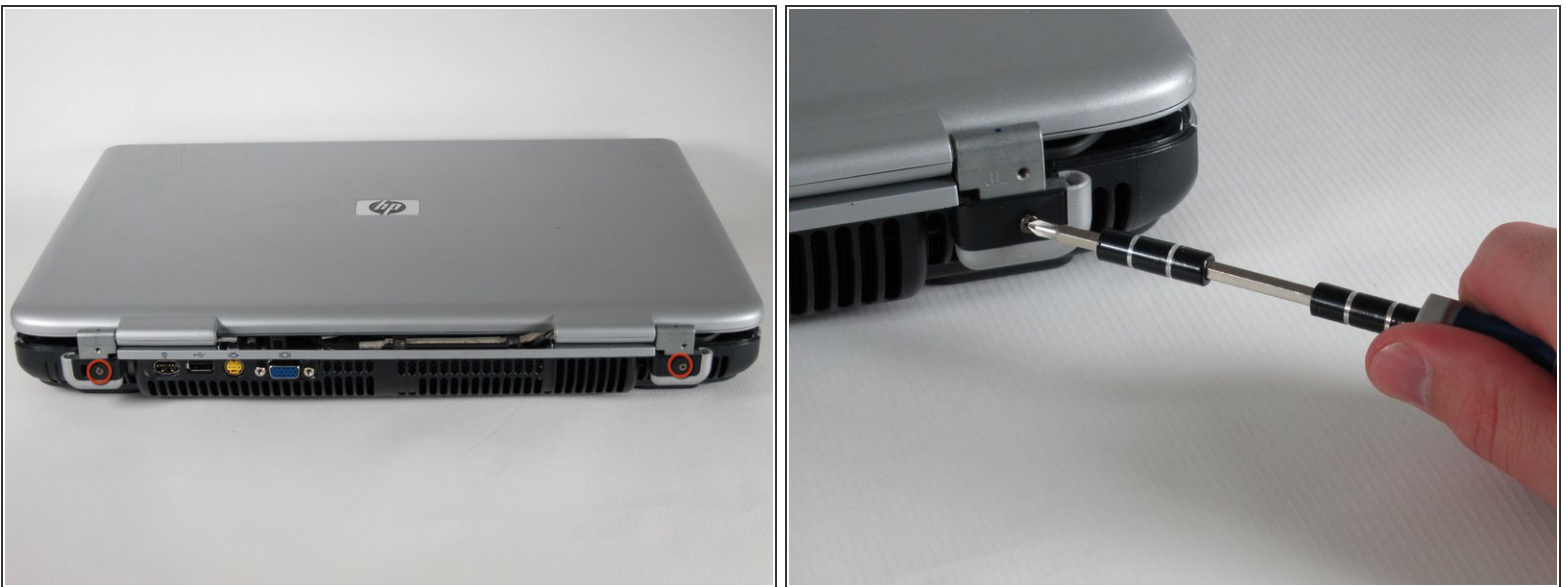


- Rotate it so the display is on your right and the keyboard is on your left.

 Lift the switch cover firmly but slowly so you do not snap it.

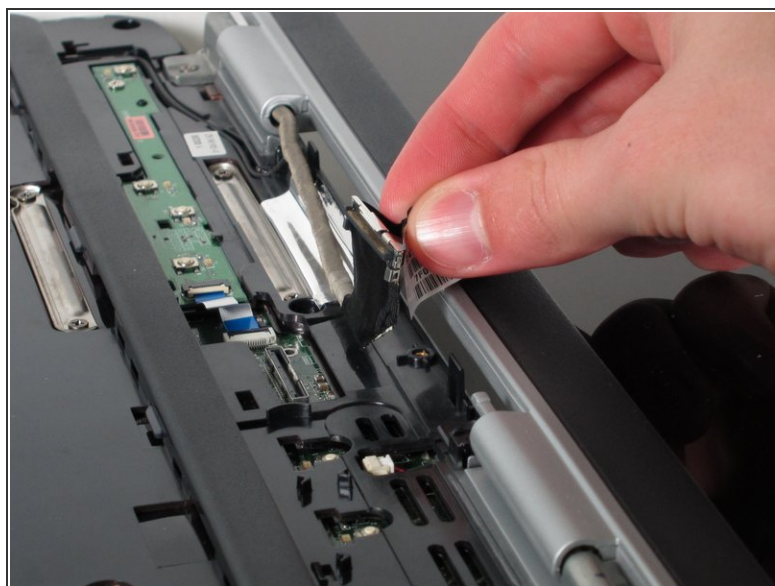
- Lift the switch cover carefully from one end while sliding the spudger between the switch cover and the laptop to separate them.
- The switch cover should easily separate from the laptop as you run the spudger through.

Step 12 — Screen



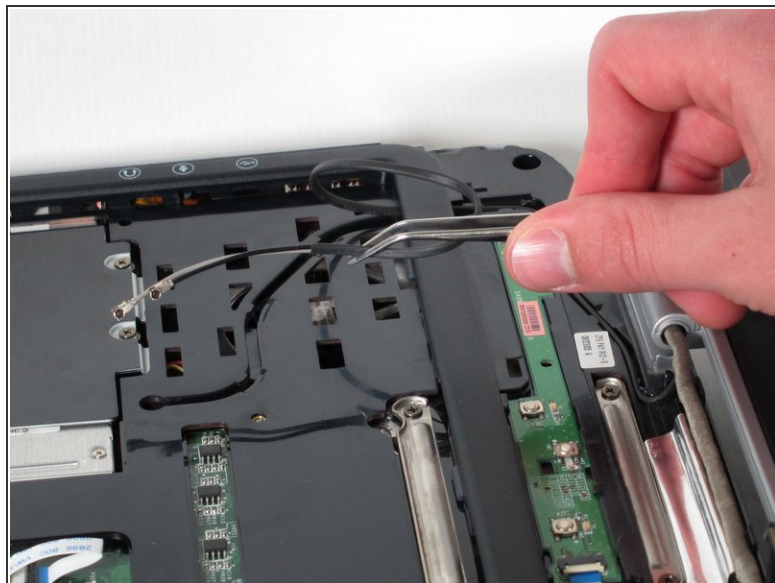
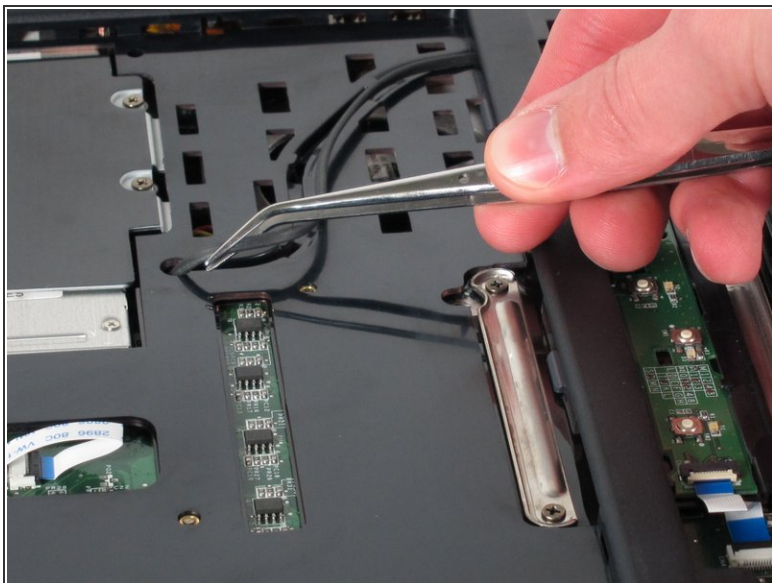
- Close the lid and rotate the laptop so that the vents are facing you.
- Unscrew the two 8mm Philips screws below the hinges.

Step 13



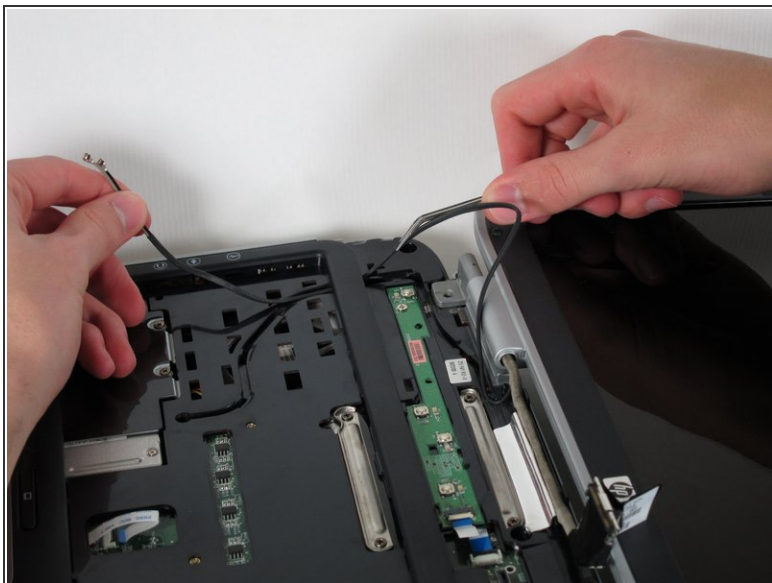
- Carefully rotate the laptop 90 degrees counter-clockwise and open the screen.
- Pull on the black tab with the HP service sticker to unplug the display from the motherboard.

Step 14



- Using tweezers, remove the black cable from the hole leading to the WiFi enclosure.
 - Pull gently to remove the black and grey cables from the case.
- i** Check the surface beneath the laptop to ensure the cables do not catch on anything when you flip the laptop over.

Step 15



- Using tweezers, pull the black cable towards the display and through the hole in the casing.

Step 16



- Unscrew the two 8mm Philips screws that attach the hinge to the laptop's display.
- Lift the screen upwards to detach it from the laptop.

To reassemble your device, follow these instructions in reverse order.