



Olympus Pen E-PL7 Back Case Replacement

Use this guide to replace a damaged back case,...

Written By: Kelsea Weber



INTRODUCTION

Use this guide to replace a damaged back case, or open the case to access other components of your camera.

We highly suggest you use a [magnetic project mat](#) or an organization tray. This camera has **many** different types of screws and keeping them organized is key to proper reassembly.

TOOLS:

[Phillips #00 Screwdriver](#) (1)

[iFixit Opening Tool](#) (1)

[Magnetic Project Mat](#) (1)

[Spudger](#) (1)

Step 1 — Back Case



- Use a Phillips #00 screwdriver to remove the six 2 mm screws on the bottom of the camera.

Step 2



- Remove the two 4 mm **reverse threaded** Phillips screws from the bottom of the camera.
- ⓘ Reverse threaded screws tighten counter clockwise and loosen clockwise.

Step 3



- Remove the two 4 mm Phillips screws under the HDMI port cover.

Step 4



- Use a Phillips #00 screwdriver to remove the 5 mm screw near the left hand grip.

Step 5



- Use a Phillips #00 screwdriver to remove the 5 mm screw near the right hand grip.

Step 6



- Flip open the LCD.
- Use a Phillips #00 screwdriver to remove the 2 mm screw beneath the LCD assembly.

Step 7



- Use a Phillips #00 screwdriver to remove the four 6.3 mm screws from the lens mount.

Step 8



- Remove the lens mount with [tweezers](#).

Step 9



- Use tweezers to remove the inner metal ring.

Step 10



- Use tweezers to remove the two springs lying beneath the inner metal ring.

Step 11



- Use a Phillips #00 screwdriver to remove the three 5 mm screws.

Step 12



- Remove the two 4 mm Phillips screws.

Step 13



- Press and hold the lens release button while using tweezers to remove the lens hook.
- Use tweezers to remove the spring underneath the lens hook.

Step 14



- Use tweezers to remove the metal clip from the external flash mount.

Step 15



- Use a Phillips #00 screwdriver to remove the four 4 mm screws from the external flash port.

Step 16



- Remove the second external flash clip with tweezers.

Step 17



- Remove the external flash port casing to expose five more screws.

Step 18



- Use a Phillips #00 screwdriver to remove the two 6.4 mm screws.
- Remove the 2 mm Phillips screw.

Step 19



- Remove the two 3.8 mm Phillips screws from the sides of the external flash connector.

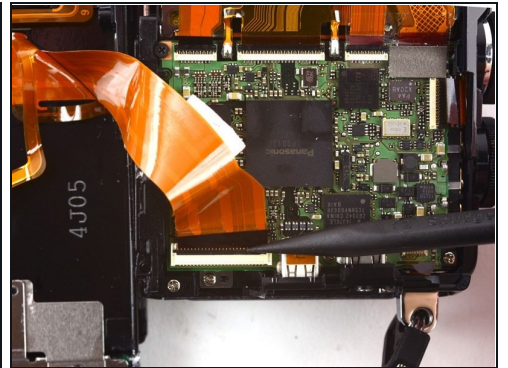
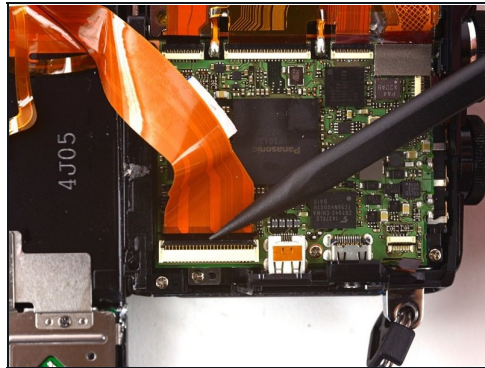
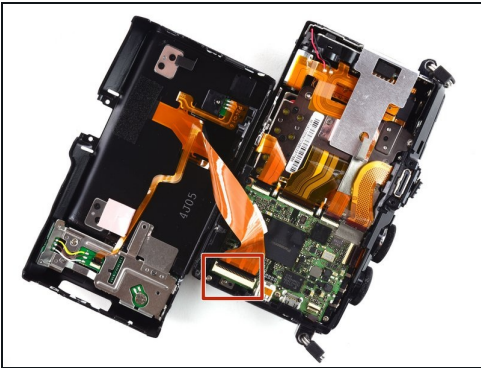
Step 20



- Gently pull the back case away from the camera.

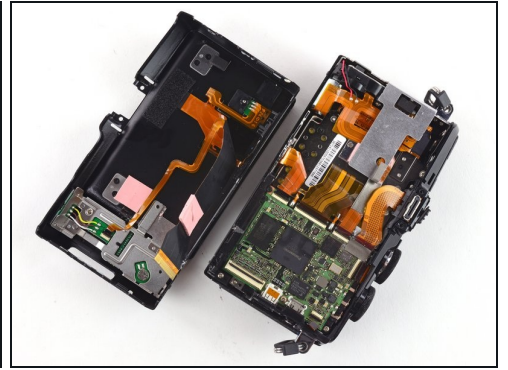
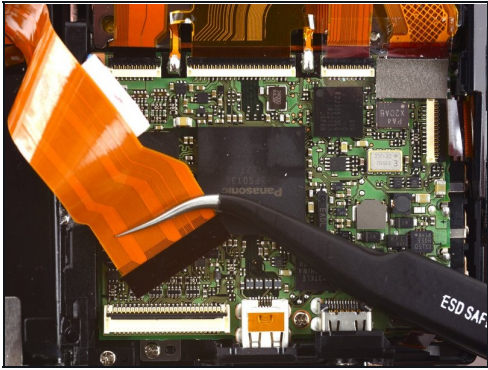
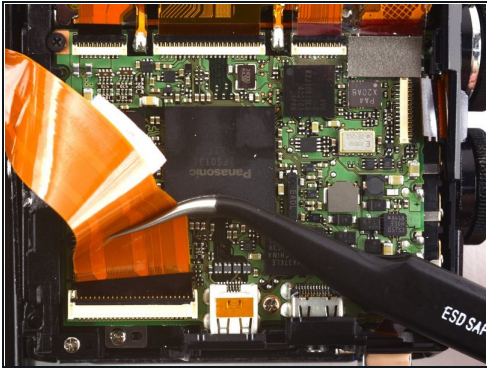
⚠ Do not attempt to remove the back case, as it is attached to the camera by a ribbon cable.

Step 21



- To remove the ribbon holding the back case to the camera, use the pointed end of a spudger to flip back the top bar on top of the ZIF connector.

Step 22



- Use tweezers to pull the ribbon out of the connector.
- Remove the back case.

To reassemble your device, follow these instructions in reverse order.