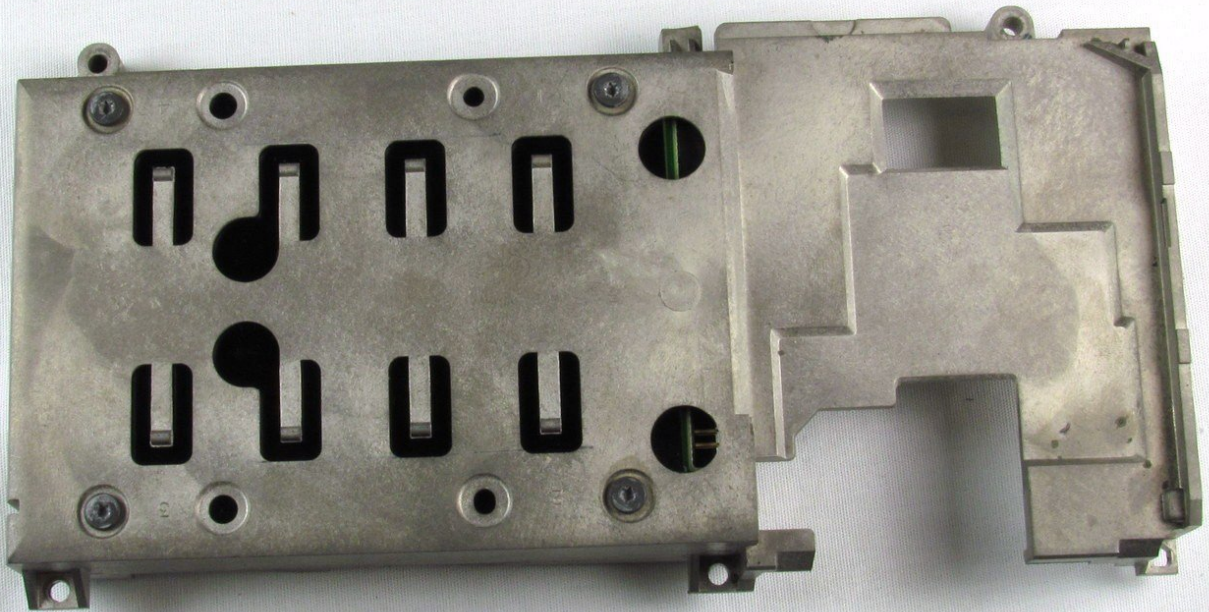




PowerBook 3400 M3553 Hard Drive Replacement

How to remove the hard drive.

Written By: Michael Mondragon



INTRODUCTION

If your hard drive was damaged or you want to upgrade it you will need to remove the old hard drive first. However, the hard drive is one of the hardest components to reach. Make sure you are able to keep all removed parts organized to make your reassembly process easier.

TOOLS:

- [T8 Torx Screwdriver](#) (1)
-

Step 1 — Battery



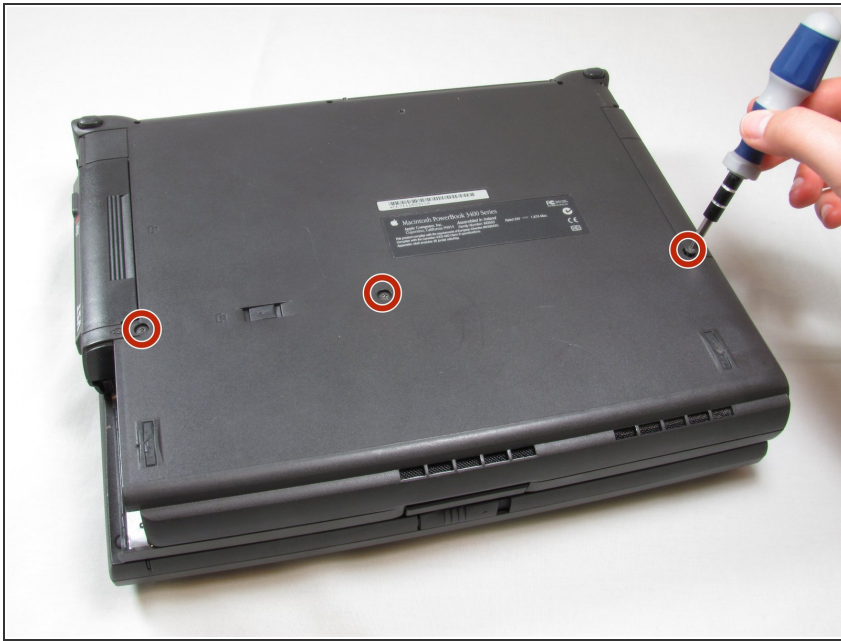
- Close the screen and turn the PowerBook over, orienting the computer upside down, using the label to guide you.

Step 2



- Hold the button on the front left side and slide the battery out.

Step 3 — Keyboard



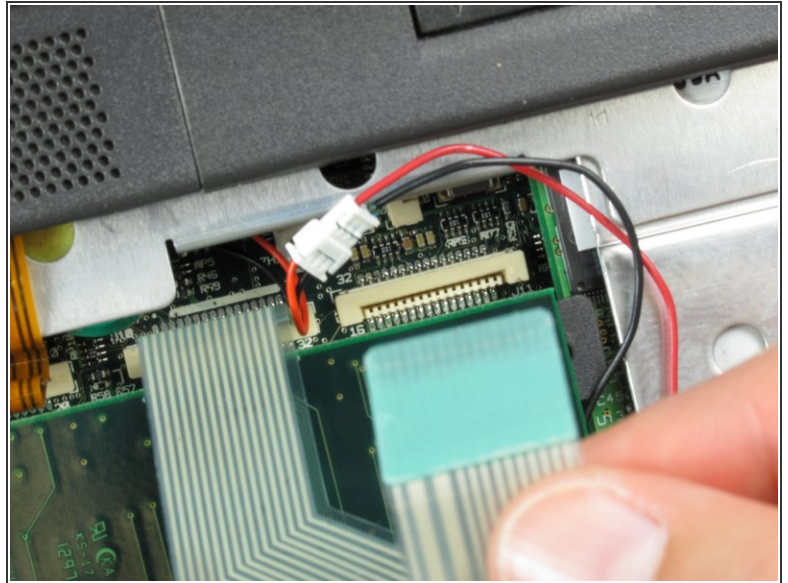
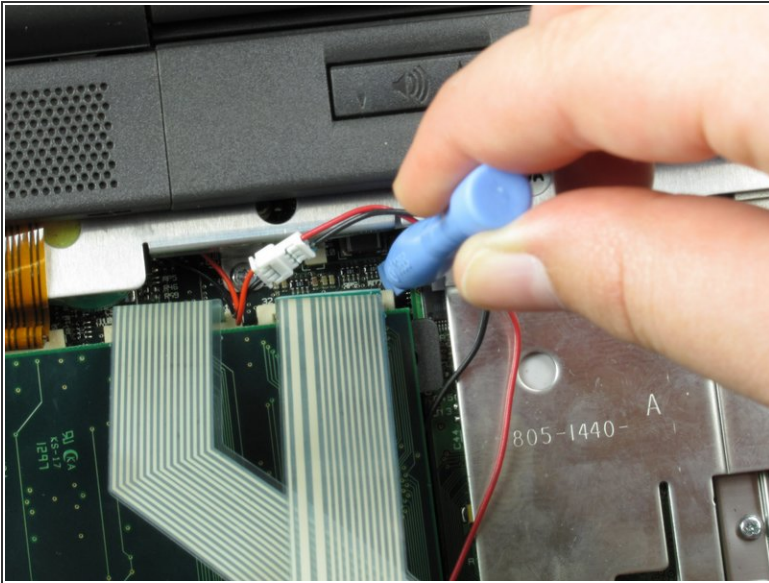
- With a Torx T8 screwdriver, remove the three Torx 24mm screws along the center of the back panel.

Step 4



- Turn the computer over and open the display. You should see that the keyboard is loose.
- ⚠ Before attempting to remove the keyboard, note that a ribbon cable connects the keyboard to the logic board. Improper removal may damage your keyboard.
- Slightly lift the front of the keyboard up, and slide the keyboard towards yourself.
 - Carefully lift the top half of the keyboard and pull it towards yourself.

Step 5



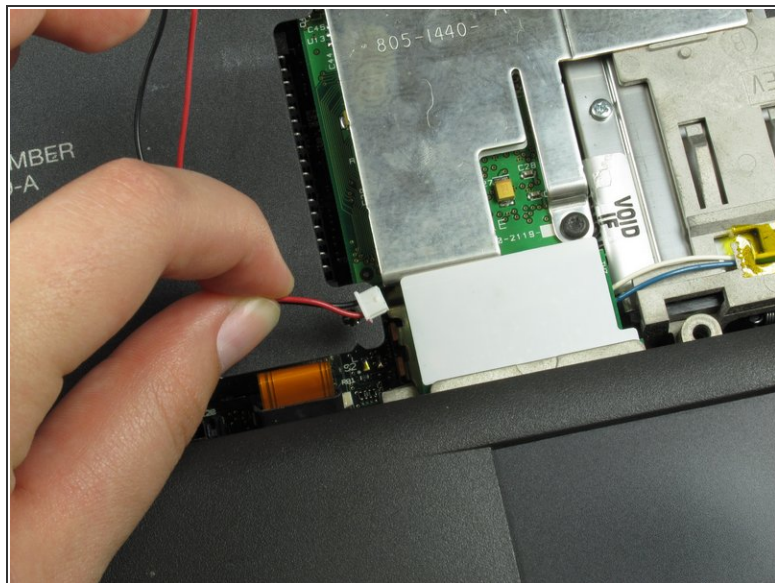
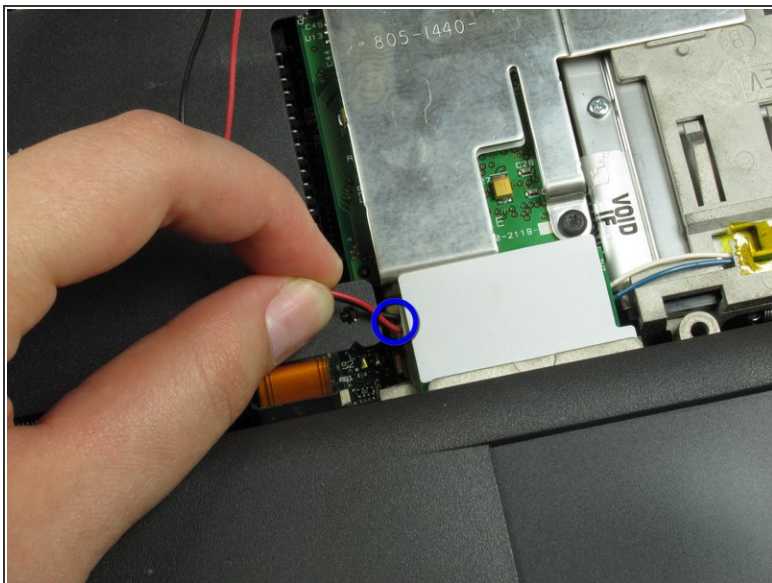
- Loosen the ribbon cables connecting the keyboard to the computer by using a plastic opening tool to lift the tabs on either side of the cable port.
- Gently remove the ribbons from its tabs.

Step 6 — RAM



- Gently wiggle the RAM card to loosen the connection until it pulls free.

Step 7 — Speaker Panel



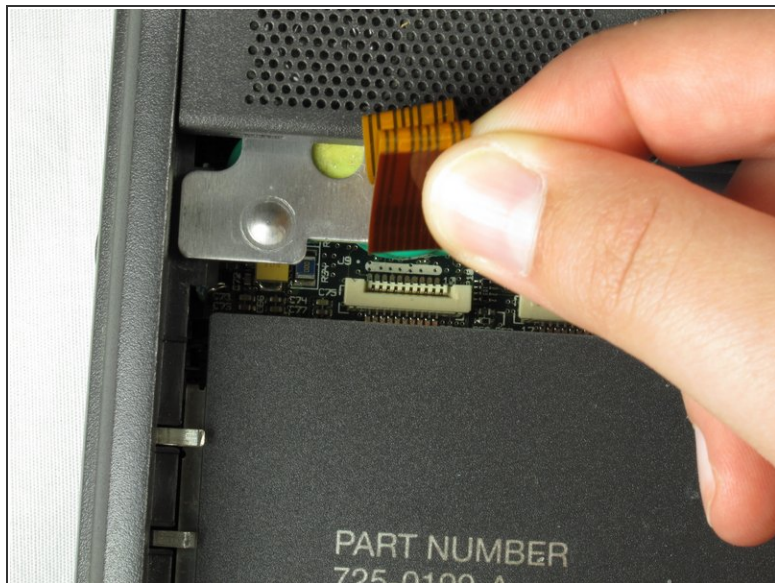
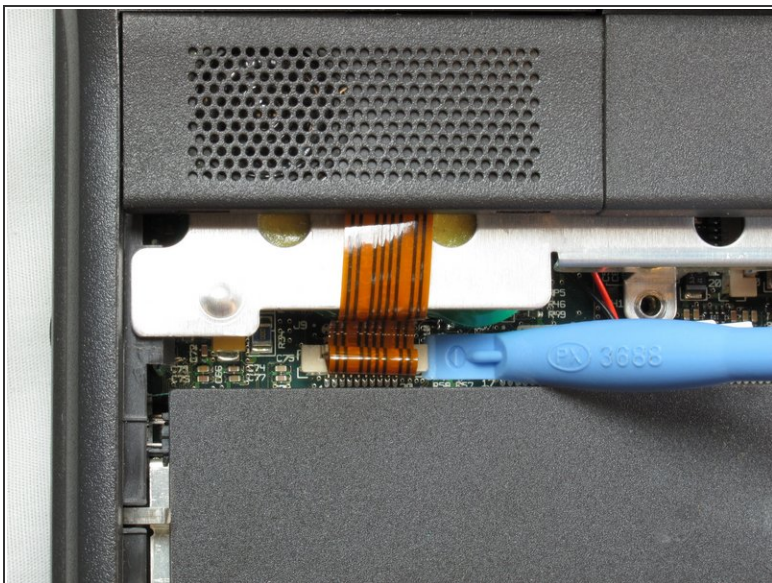
- Disconnect the wires from the port.

Step 8



- Remove the 7mm screw connecting the speaker panel to the computer.

Step 9



- To detach the speaker panel's ribbon cable, use a plastic opening tool to lift the tabs on both sides of the cable port.
- Once loose, pull the ribbon cable free.

Step 10



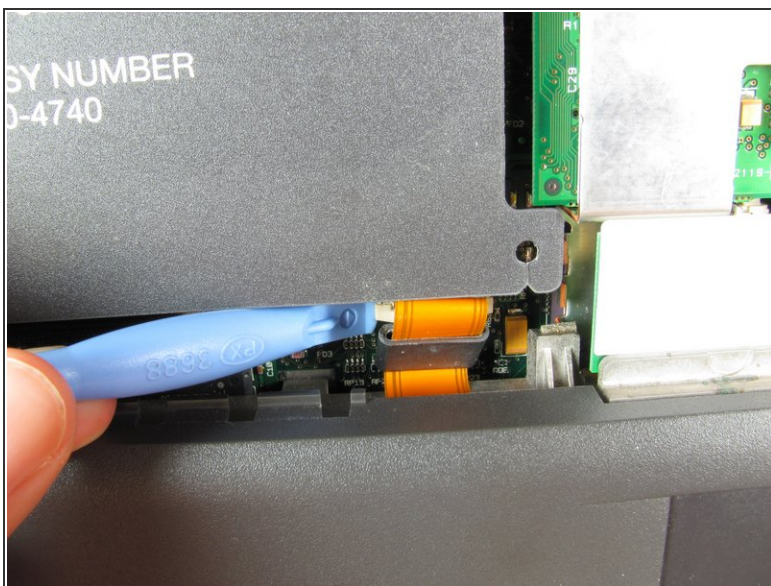
- Lift the lighting/audio panel from it's bottom corners and pull the panel towards yourself.

Step 11 — Track Pad Panel



- Push the display screen back to give yourself enough space to remove the side panels.
- ⚠ Before removing the side panels, note that removing the side panels hastily will damage the underlying panel screw. However, this will not affect the functionality of your PowerBook.
- Remove the panels on either side by gently but firmly pulling up on them with both hands.

Step 12



- Use the plastic opening tool to lift up the tabs on either side of the ribbon cable port and then gently pull the ribbon cable free.

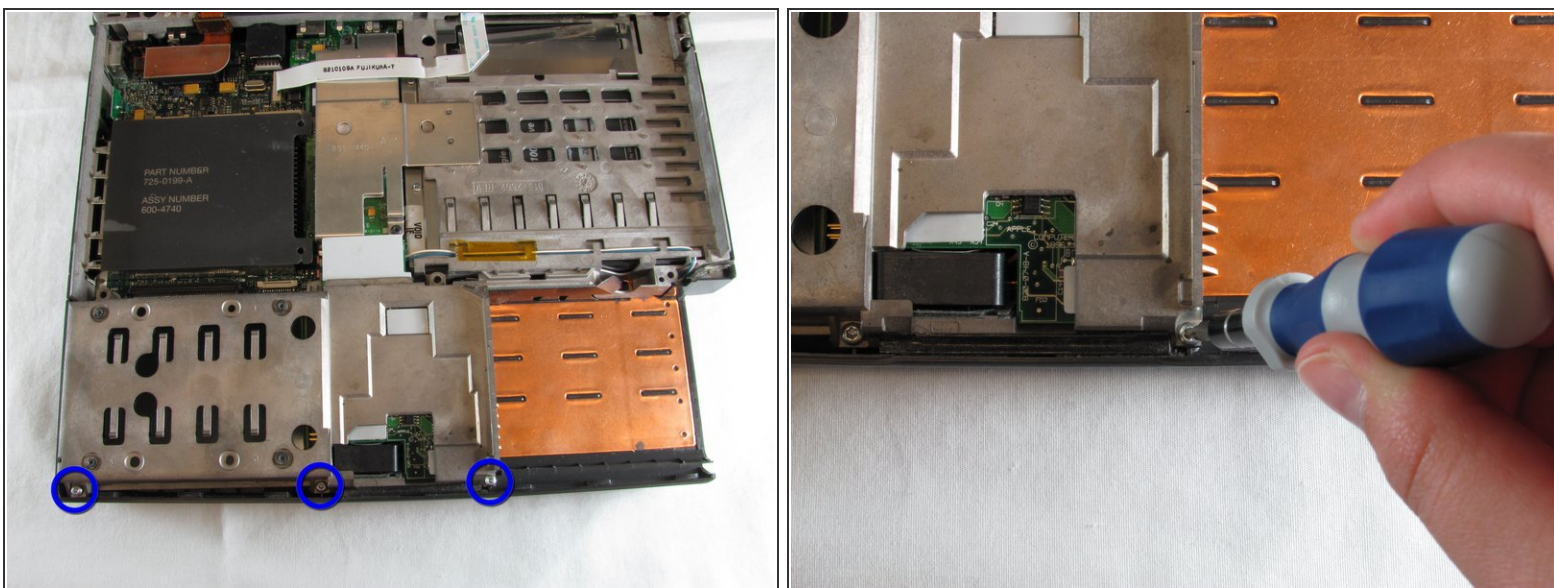
Step 13



⚠ WARNING: There is a high risk of breaking the tabs that lock the panel to the casing. Remove the panel slowly and cautiously to avoid damage.

- With your index finger and your thumb, squeeze the track pad panel to loosen the clamps. Then slide the panel towards yourself.

Step 14 — Hard Drive



- Remove the three T8 10mm long torx screws along the bottom of the casing next to the hard drive.

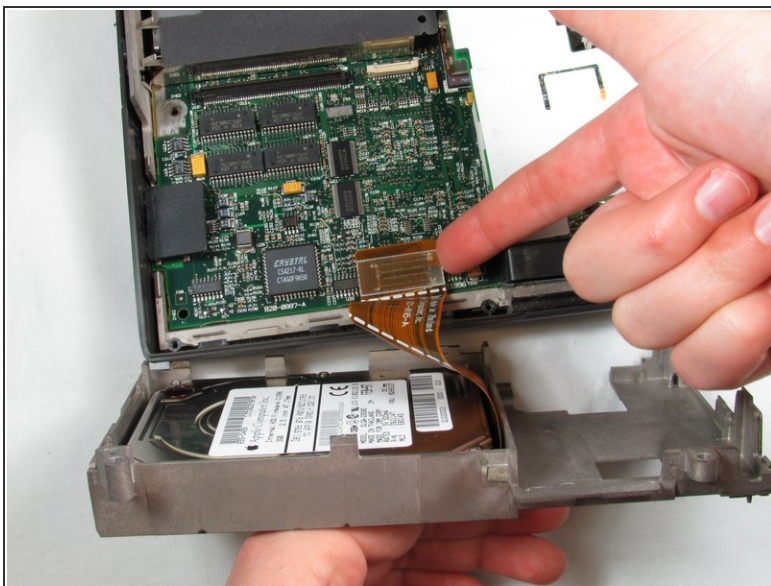
Step 15



⚠ A ribbon cable is attached to the underside of the hard drive. Hasty removal of the hard drive can damage the ribbon cable.

- Gently lift up on the hard drive.

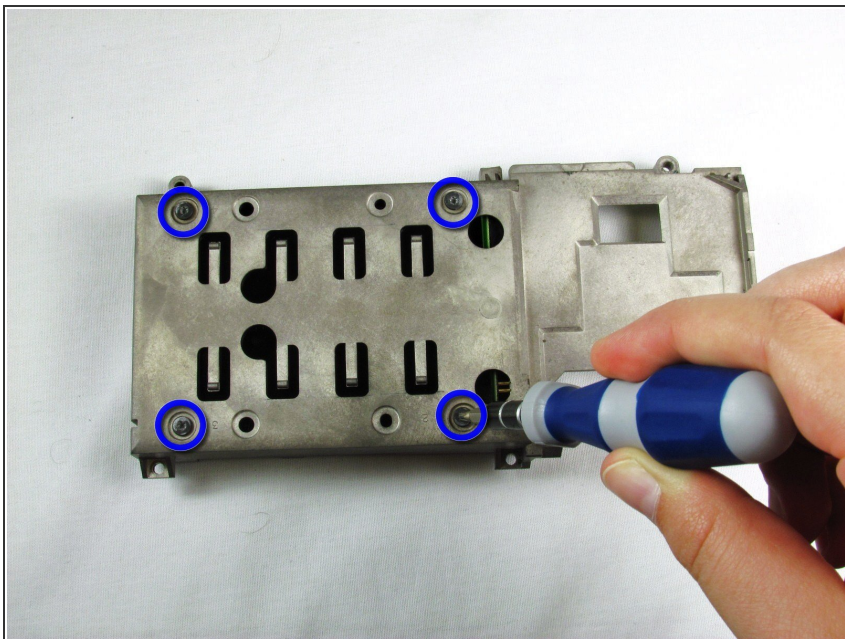
Step 16



- Rotate the hard drive towards yourself to access the ribbon cable and then gently pull up on the ribbon cable connector to remove the cable.

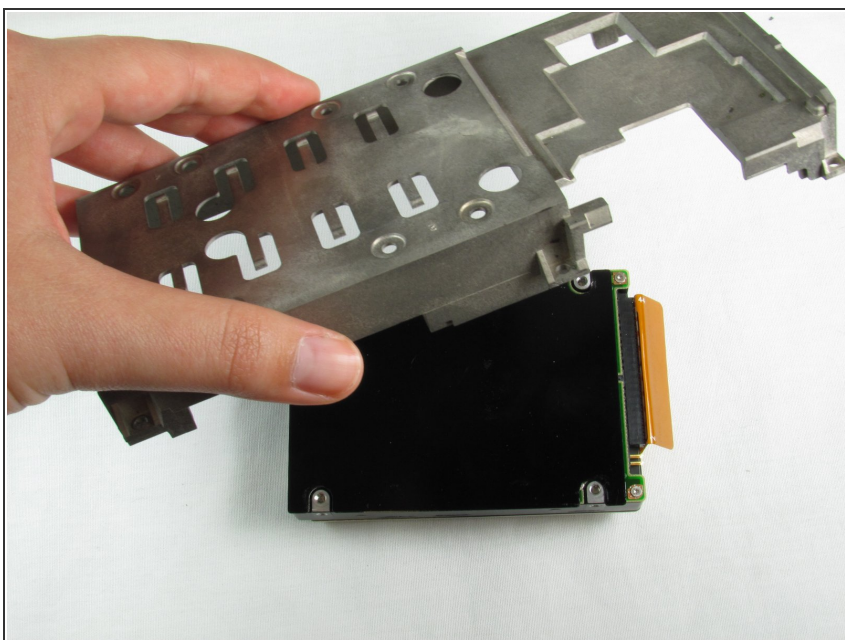
i You might find it easier to set the hard drive on its side while disconnect the ribbon cable.

Step 17



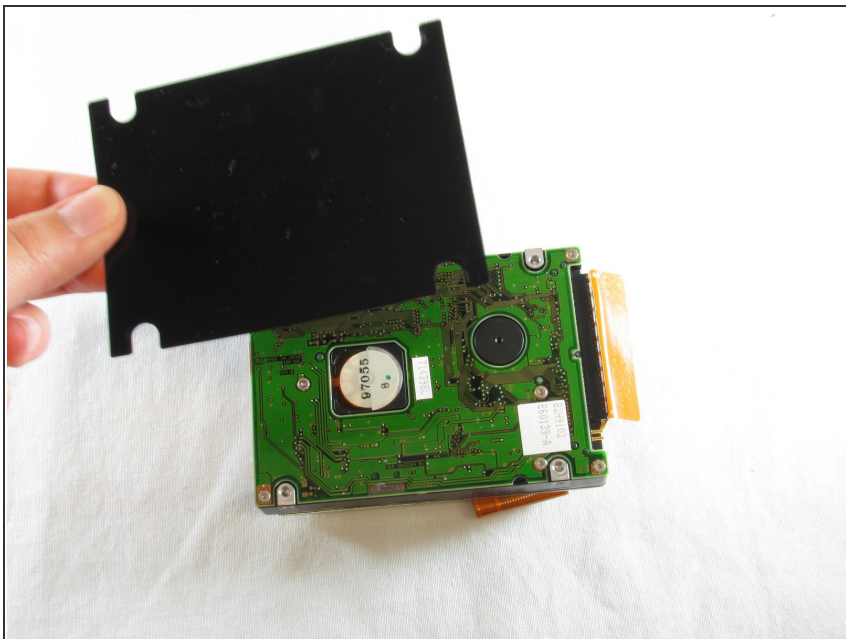
- Place the hard drive so that the casing is facing up.
- Remove the 4 T8 5mm long torx screws to remove the hard drive from the metal casing.

Step 18



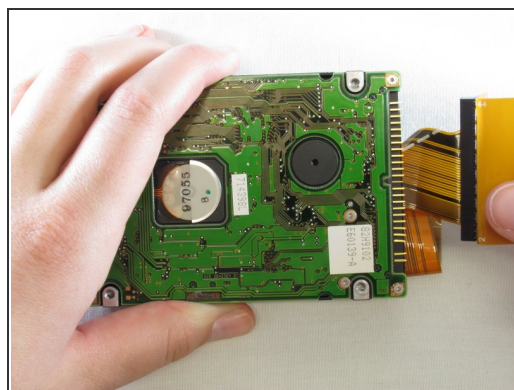
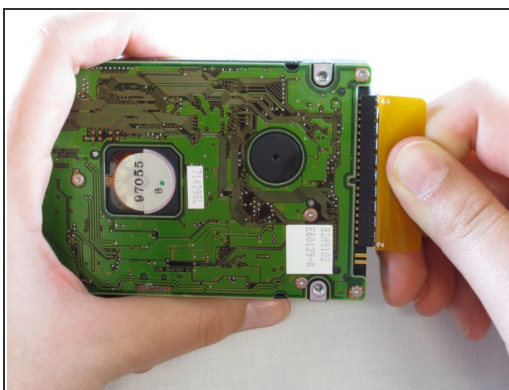
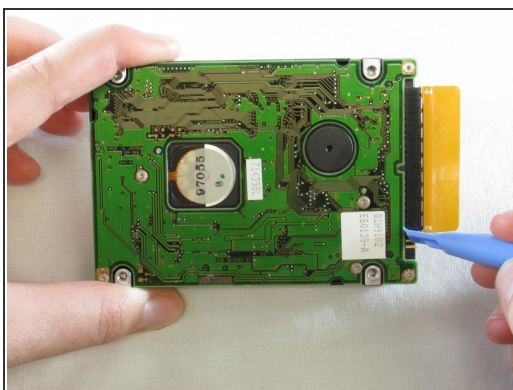
- Lift the metal casing off of the hard drive.

Step 19



- Remove and set aside the black protector that was under the hard drive casing.

Step 20



- ⓘ If your replacement drive did not come with a ribbon cable, use a plastic opening tool to remove the ribbon cable from your old hard drive.
- Use a plastic opening tool to loosen the ribbon cable by running it along the connection and gently prying it free.
- When you have loosened the connection, pull the tab to remove the ribbon cable.

Install the new hard drive by following these instructions in reverse order.

This document was generated on 2020-11-28 02:12:48 AM (MST).

