



# Apple Cinema Display M8149 LCD Control Board Replacement

Apple Cinema Display M8149 LCD Control Board...

Written By: Brett Murphy



# INTRODUCTION

## Apple Cinema Display M8149 LCD Control Board Replacement Guide:

This guide will provide the steps to accessing the control board on an Apple Cinema Display M8149 LCD and switch on the main circuit board. Old Apple products can often wear down over time, making this a necessary fix for many users.

Warning: Due to the age of this device, it is advised that you be very careful with the internal and stray parts.

---

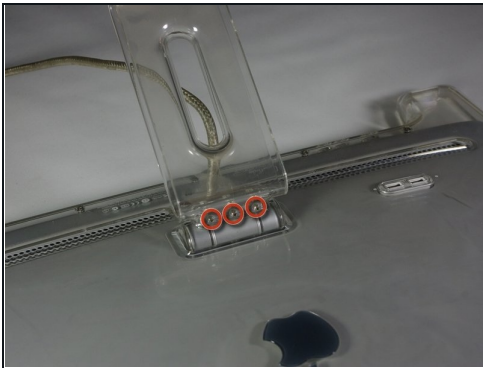
### TOOLS:

4 mm Hex Key (1)

Phillips #2 Screwdriver (1)

---

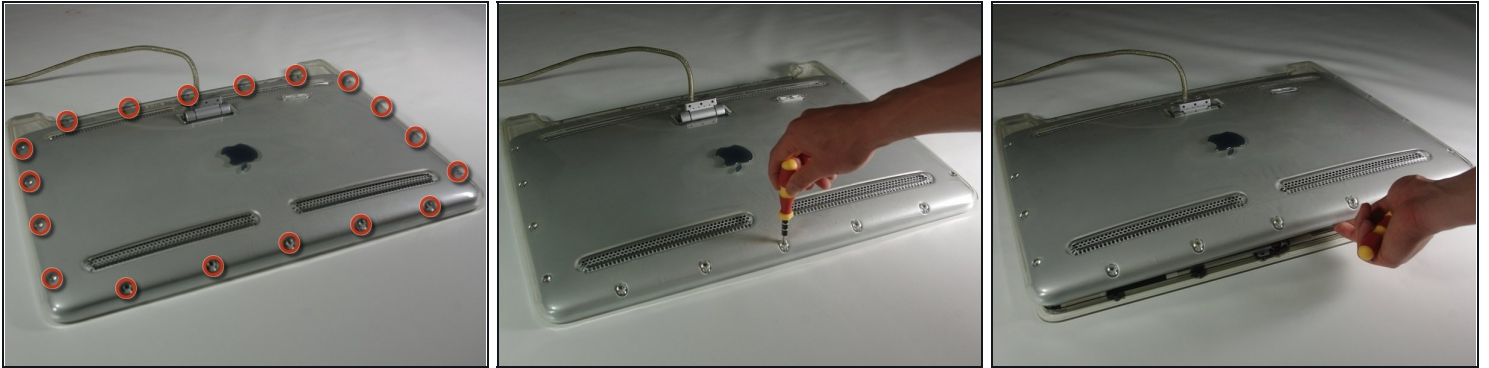
## Step 1 — Control Boards



 Before starting, make sure the display is unplugged.

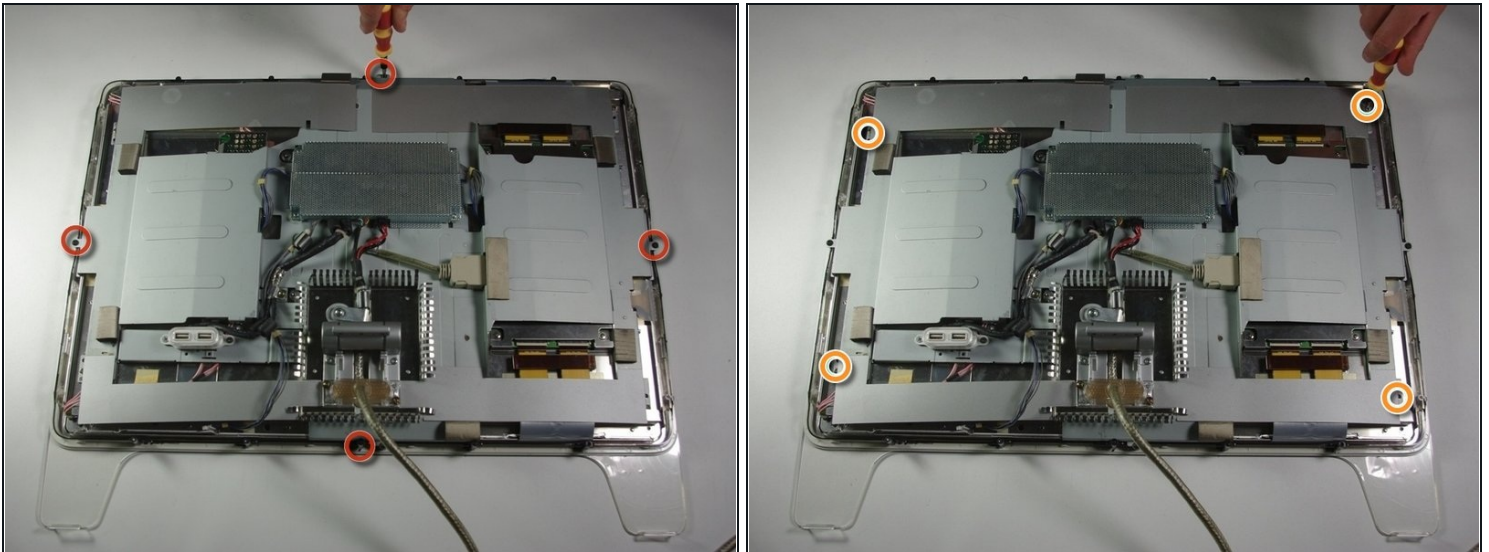
- Place the Cinema Display so that it is lying on its face and the feet are pointed away from you.
- Remove the three screws (9.52 x 4.43mm) that connect the back foot to the hinge using the Hex Key.
- Remove the back foot from the hinge mount by grabbing the foot and pulling upwards.

## Step 2



- Remove the eighteen (5.25 x 4.43 mm) screws around the edge of the backplate using the Hex key.
- Disconnect the small white connector leading to the display's Power button.
- Gently lift the backplate off of the display. Completely remove the backplate and set it aside.

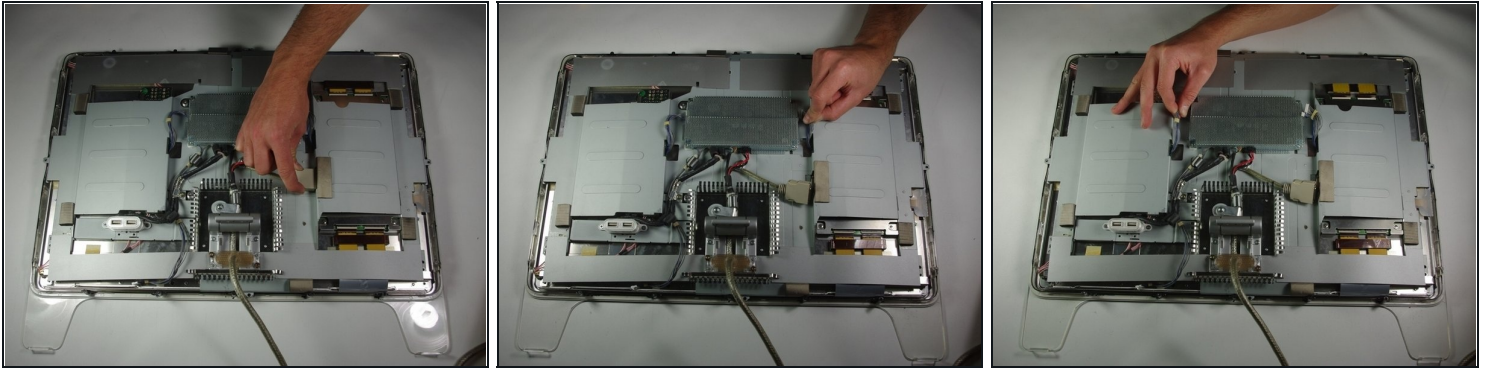
## Step 3



- Use a Phillips #2 screwdriver to remove the four (9.52 x 3.43 mm) screws on the outer rim of the metal cover.
- Next, remove the four cover (11.91 x 2.89 mm) screws located at the corners of the metal cover using the Phillips #2 screwdriver.

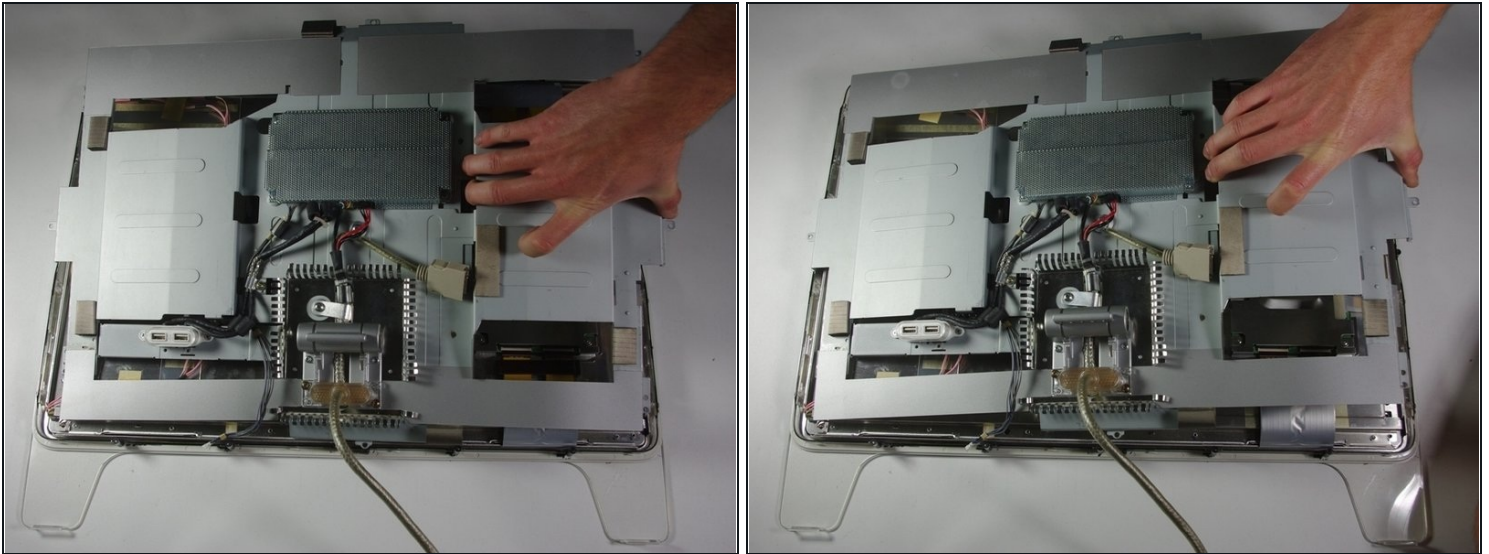


## Step 4



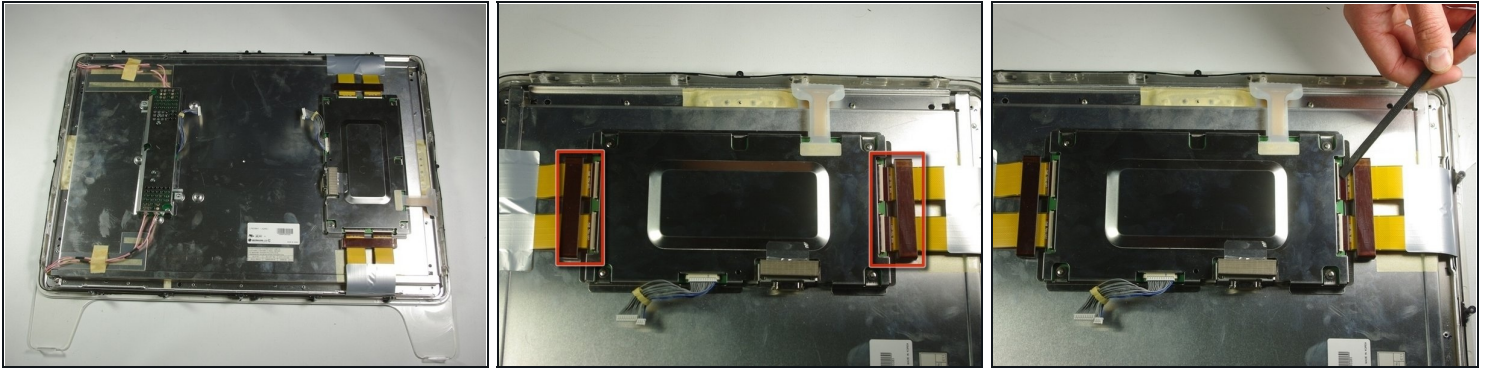
- Unplug the large brown plug in the center-right, that connects the control board to the rest of the display.
- Unplug the blue and gray plug on the right side of the control board. Repeat with the left side.

## Step 5



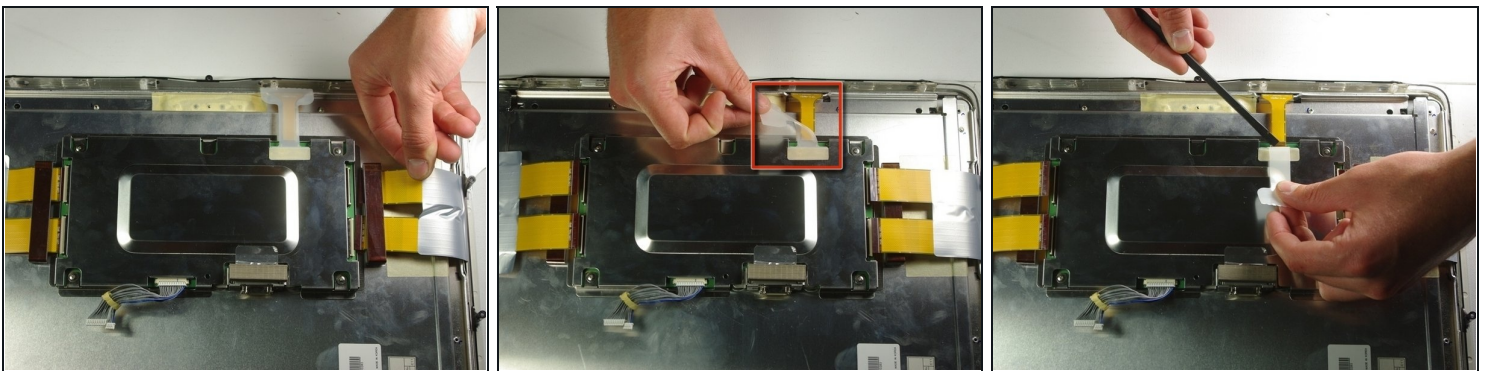
- Gently lift the large metal cover which spans across the back of the whole display.

## Step 6 — LCD Control Board



- Carefully remove the two tape plugs on either side of the control board using a spudger.

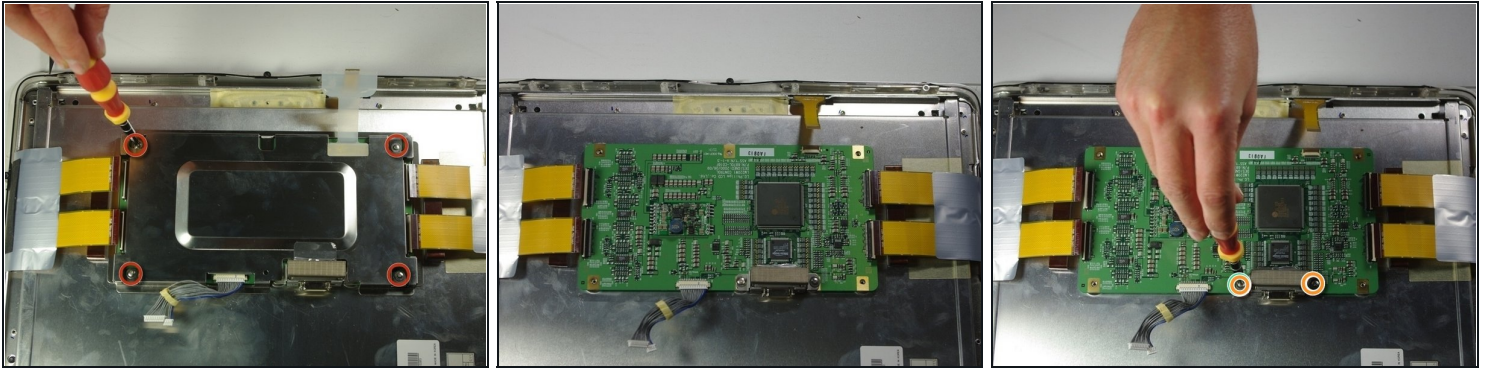
## Step 7



- Pull the previously removed tape out from the metal box with your hand.
- Peel back the white plastic cover located on the tape plug and unplug the tape plug on the right side of the unit using the spudger.

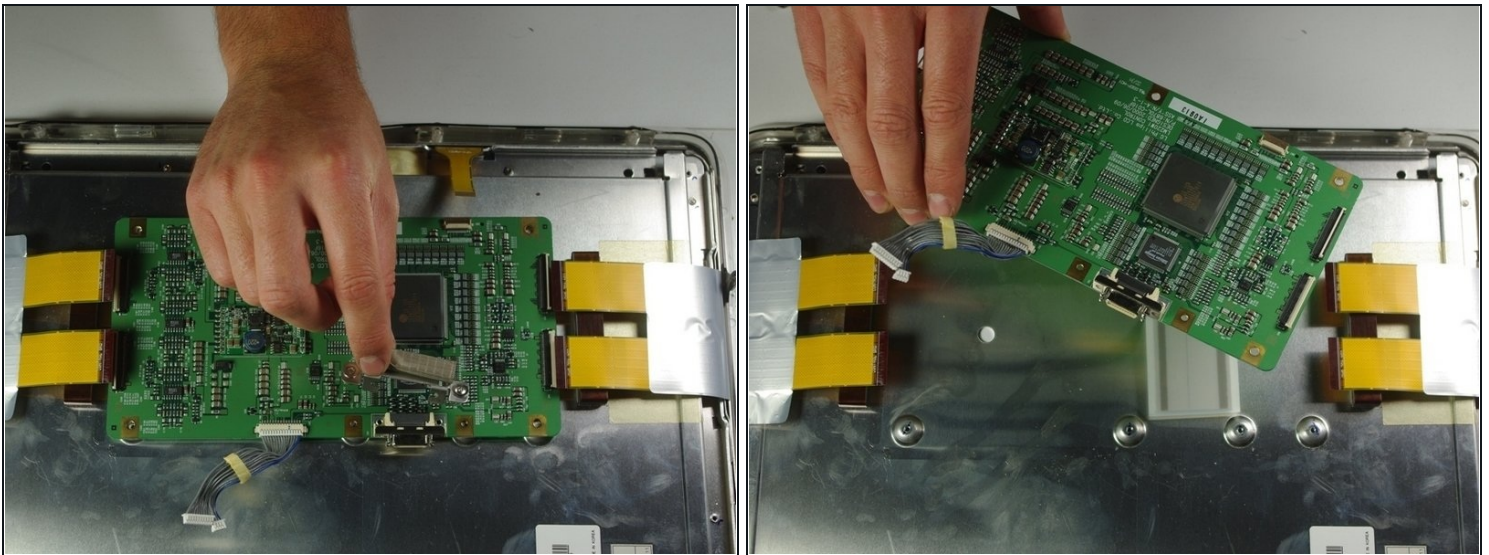


## Step 8



- Unscrew the four screws (4.79x2.33mm) on the metal box using the Phillips #2 screwdriver.
- Lift the metal cover off to reveal a circuit board.
- Remove the two terminal screws (4.79x2.34mm) using the Phillips #2 screwdriver.

## Step 9



- Remove the terminal cover.
- Remove the circuit board from the right side of the unit by gently lifting it out.

---

To reassemble your device, follow these instructions in reverse order.