



# Sony Cyber-shot DSC-TX55 Battery Replacement

Written By: Megan East



## Step 1 — Battery



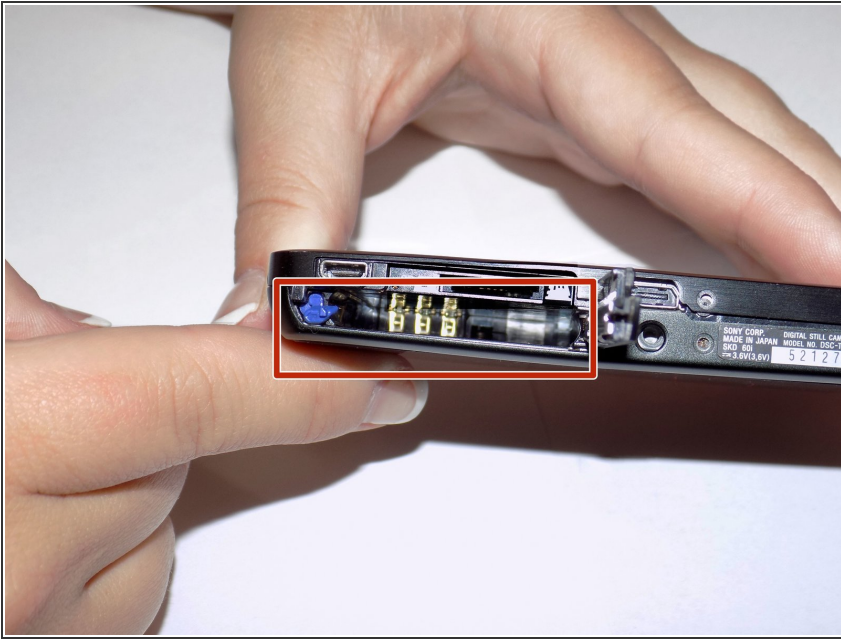
- Find the battery door labeled with arrows that is located on the bottom of your device.

## Step 2



- Slide the battery door in the direction that the arrows are pointing. The door will open outwards.

## Step 3



- Slide the blue locking tab to release the battery. Slide the battery out of the camera.

To reassemble your device, follow these instructions in reverse order.