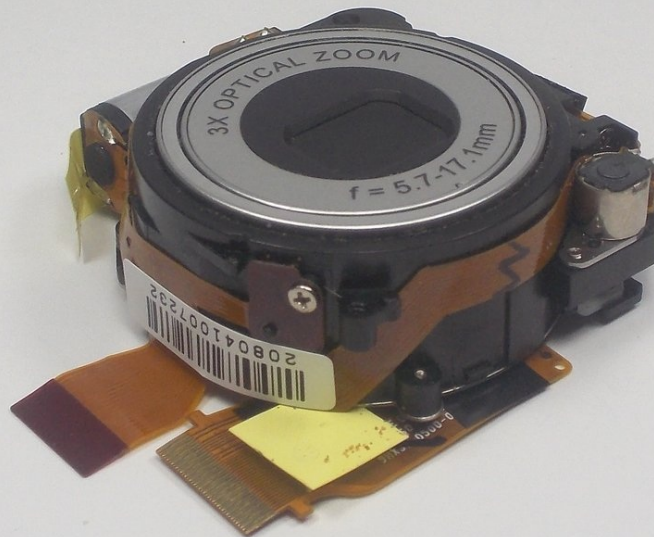




Sanyo VPC-T850 Lens Replacement

Written By: James Robinson

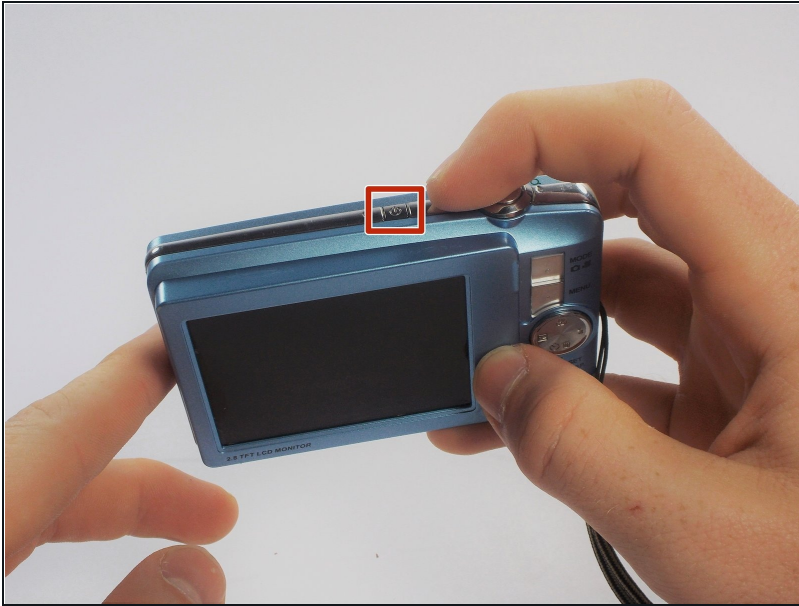


TOOLS:

Phillips #000 Screwdriver (1)

iFixit Opening Tool (1)

Step 1 — Battery



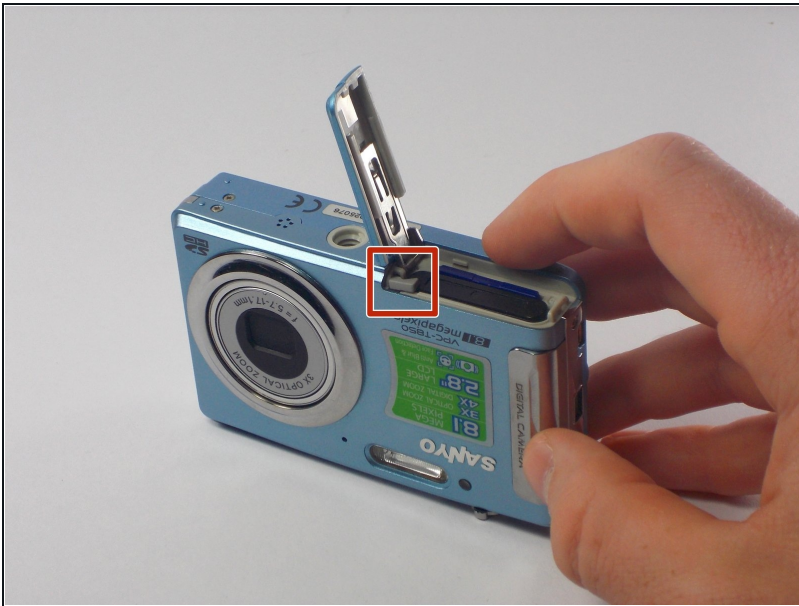
- Make sure the camera is powered off by pressing and holding the small, square button embedded in the top rim of the camera.

Step 2



- Locate the hatch found on the bottom of the camera.
- Open the hatch by gripping the small notch and sliding it outwards.

Step 3



- Push the small, plastic arm out of the way to free the battery.
- ⓘ The battery is spring loaded and will pop out slightly when the arm is moved.

Step 4



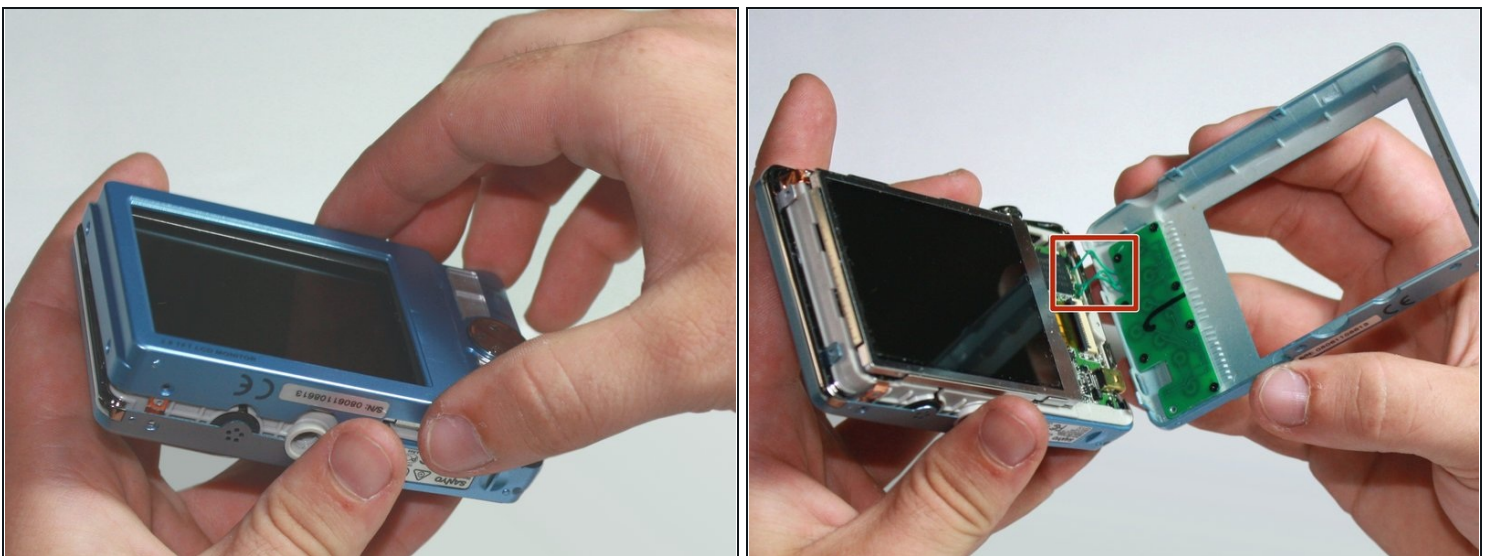
- Pull the battery out of the camera and close the hatch.
- ★ To reinsert, there is a triangle on the battery indicating which direction to slide it in.

Step 5 — Outer Casing



- Using your Phillips #000 Screwdriver, remove the eight screws located around the sides and bottom of the camera.
 - ⓘ Be sure to keep track of the side each screw comes from, as they come in different lengths.

Step 6

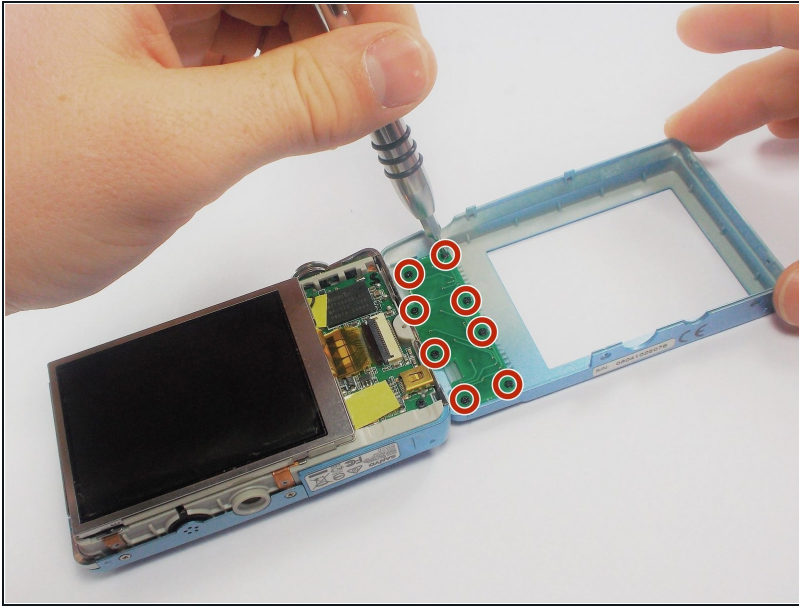


- Orient the camera so the display is facing up.
- Gently pull off the rear panel surrounding the display.

⚠ There are still three green wires connecting the panel to the rest of the camera.

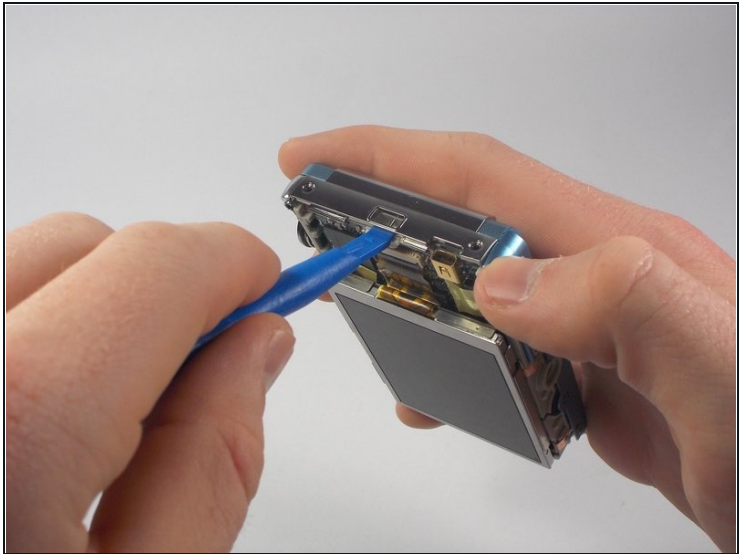
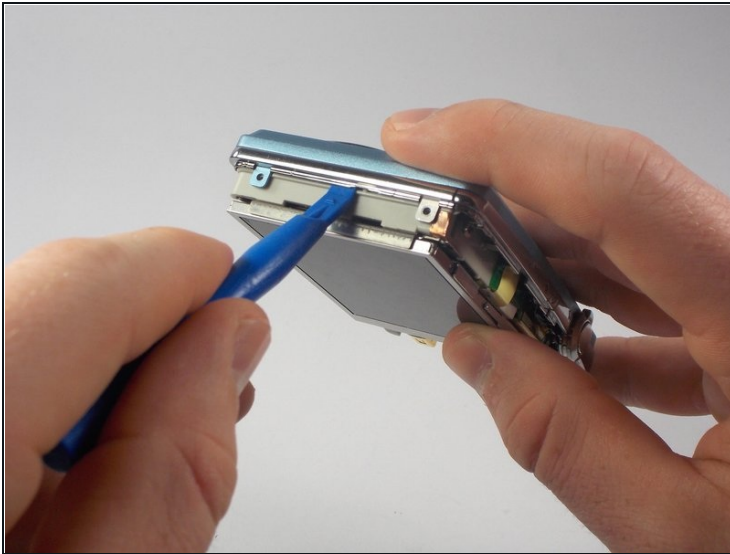
- ⓘ Use your prying tool if you have difficulties removing the panel by hand.

Step 7



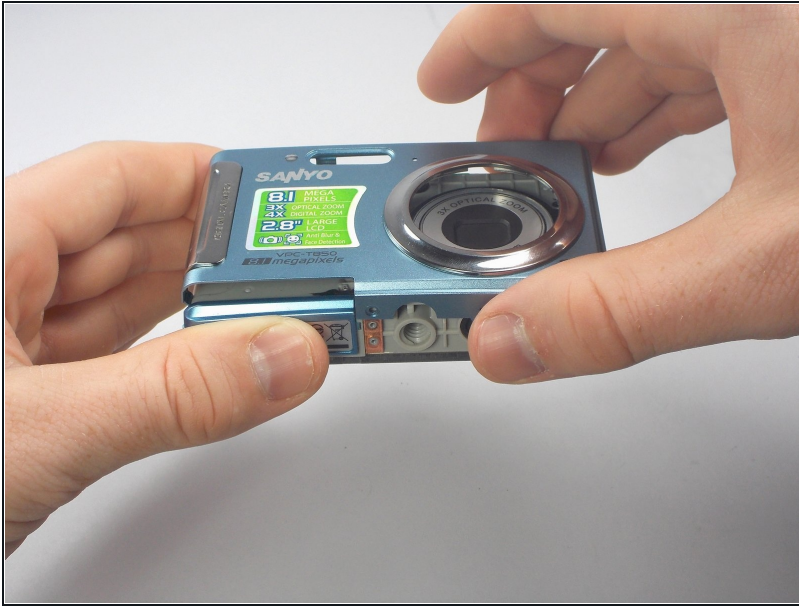
- Remove the eight black screws connecting the keypad circuit board to the rear panel.

Step 8



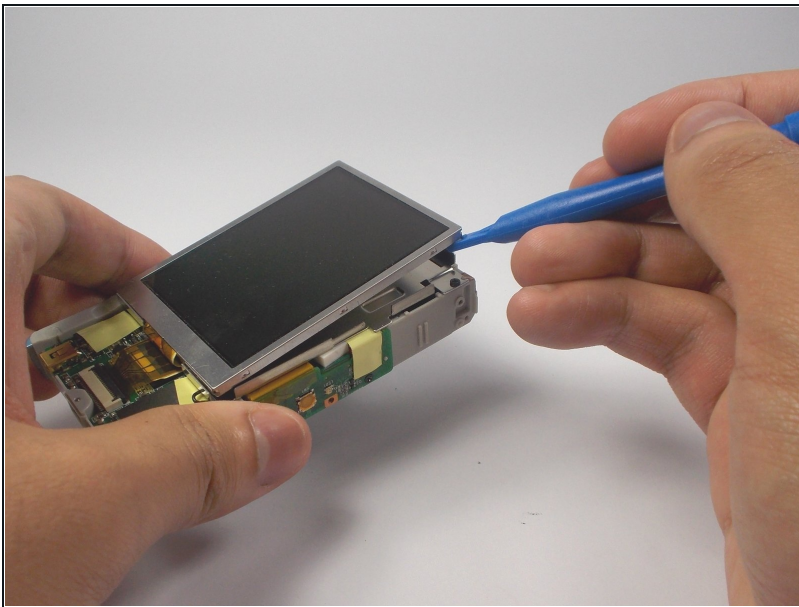
- With a plastic opening tool, gently remove the chrome framing on the left and right sides of the camera.

Step 9



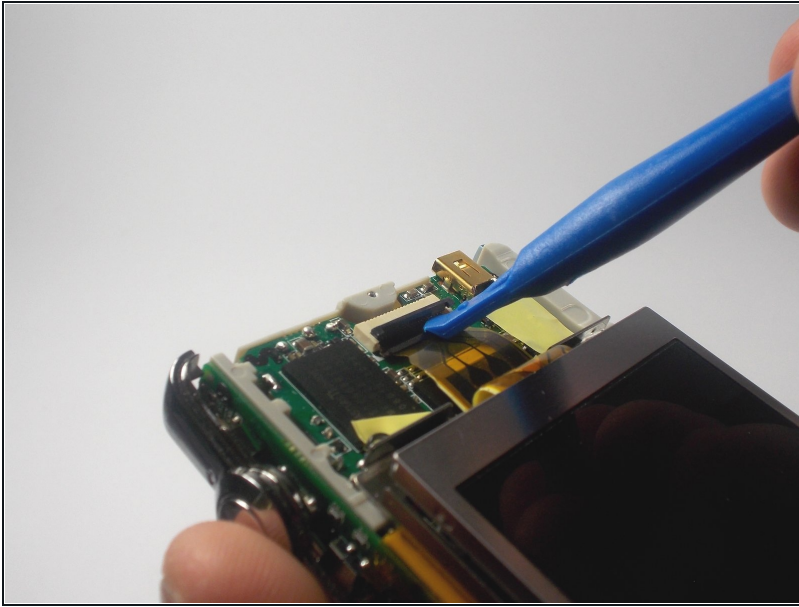
- Flip the camera over so the lens is facing up.
- Gently lift up the front panel to remove it from the rest of the camera.
- ① Use your plastic opening tool if you have difficulties removing the panel by hand.

Step 10 — LCD Display



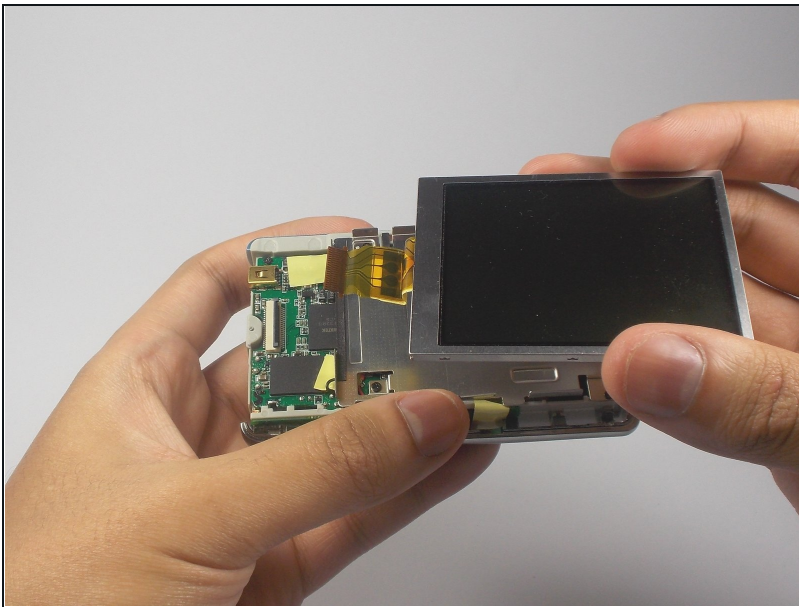
- Flip the device over to where the display is located.
- Using your plastic opening tool, lift the display out of its metal housing.

Step 11



- Locate the orange ribbon connecting the display to the camera.
- Using your plastic opening tool, gently lift the black bar holding the orange ribbon to the camera.

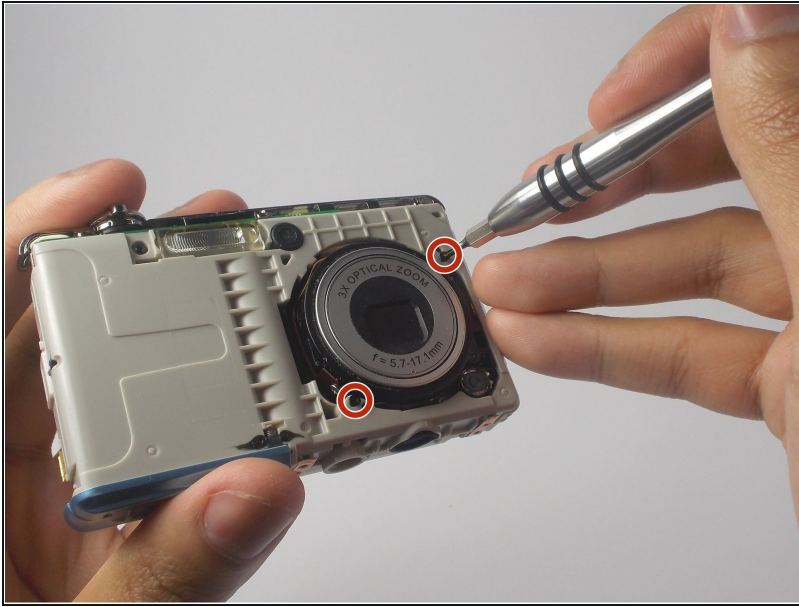
Step 12



- With two fingers held firmly on the display, gently pull the orange ribbon out of the camera.

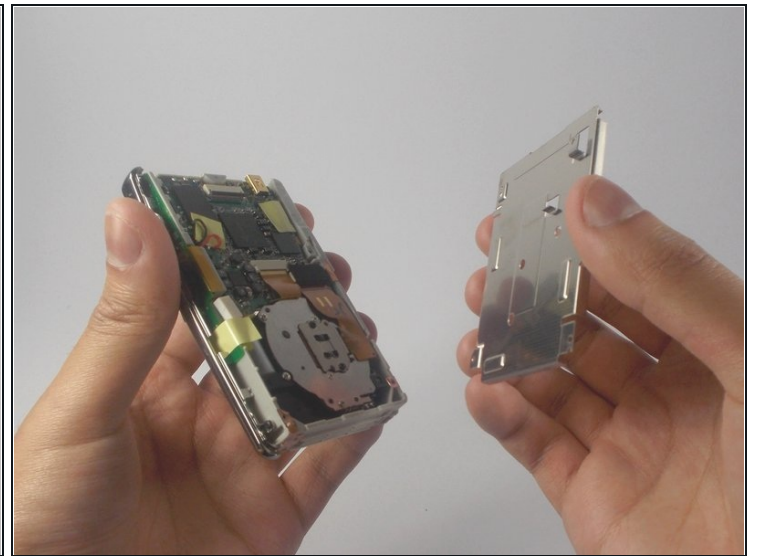
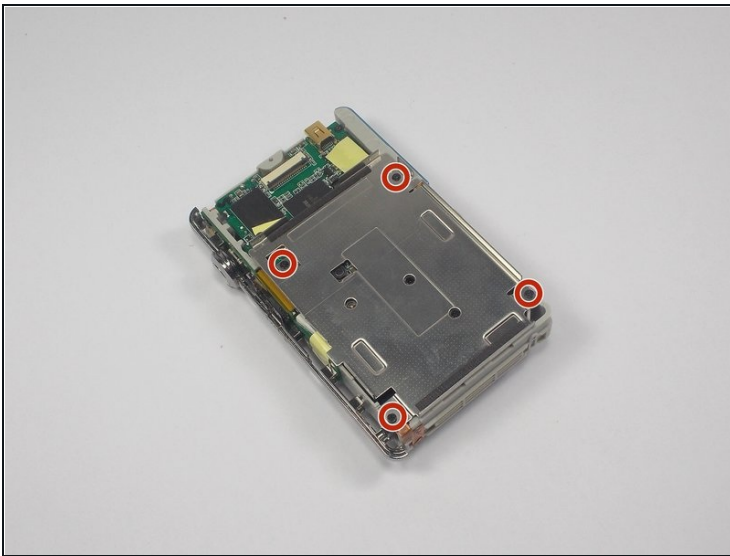
⚠ Pull slowly to avoid severing the orange ribbon from the display.

Step 13 — Lens



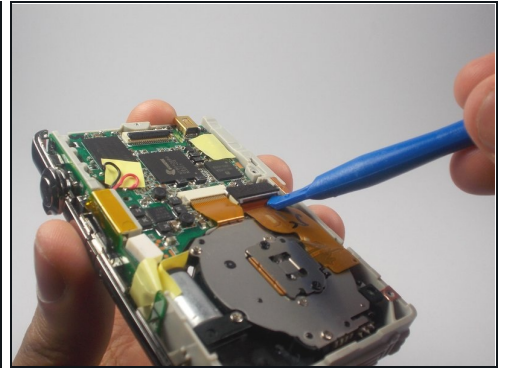
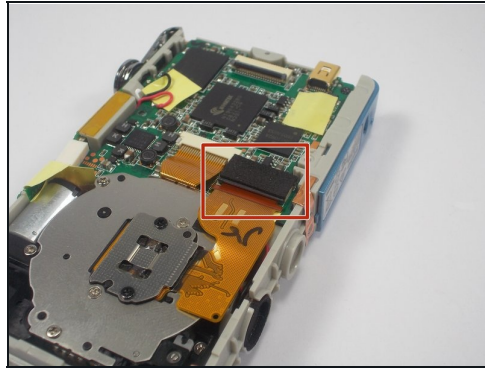
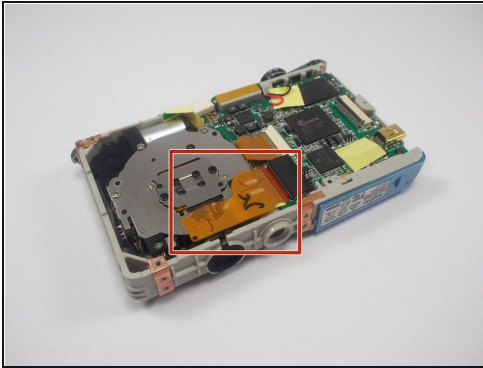
- Orient the camera so the lens is facing up.
- Locate and remove the two screws connecting the lens to the camera.

Step 14



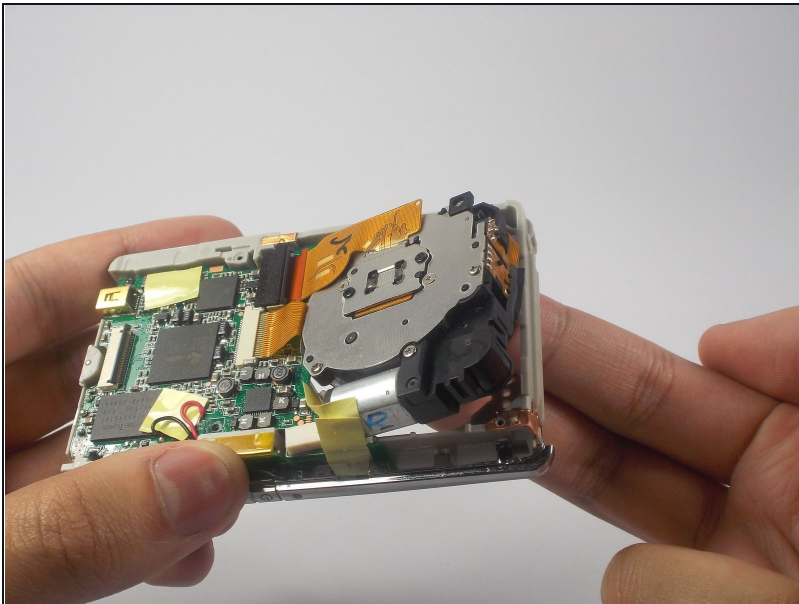
- Flip the camera back around to the other side.
- Remove the four black screws connecting the metal display holder to the camera.
 - ❗ You do not have to remove the three screws located near the center.
- Gently lift the display holder to reveal the underside of the lens.

Step 15



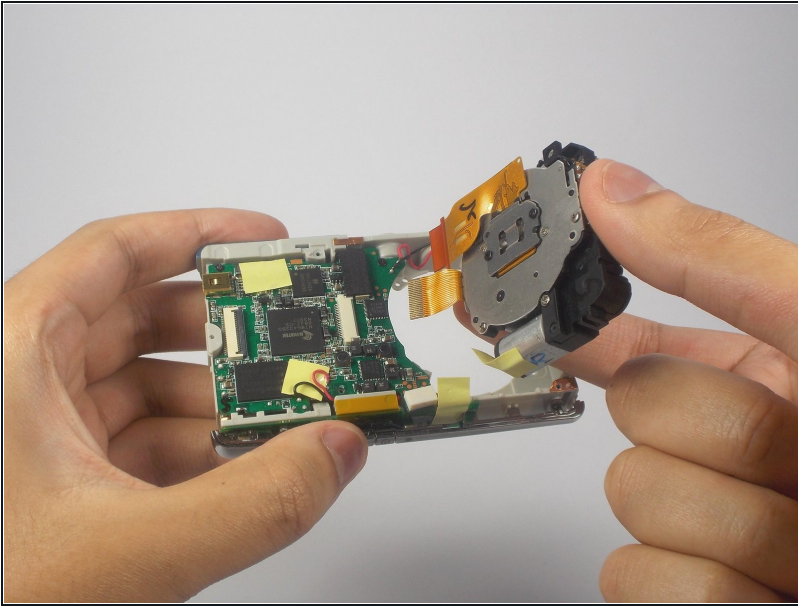
- Locate where the larger orange ribbon is plugged into the motherboard.
 - ① There should be a rectangular foam piece covering the part it is plugged into.
- Using your plastic opening tool, gently lift the edge of the rectangle where the orange ribbon is connected.

Step 16



- With two fingers, slowly lift the lens out of its compartment.

Step 17



- With the lens between your thumb and index finger, pull to delicately slide the ribbons out of their connections.
- ☑ The lens should be placed back into the compartment before attempting to reconnect the ribbons.

To reassemble your device, follow these instructions in reverse order.