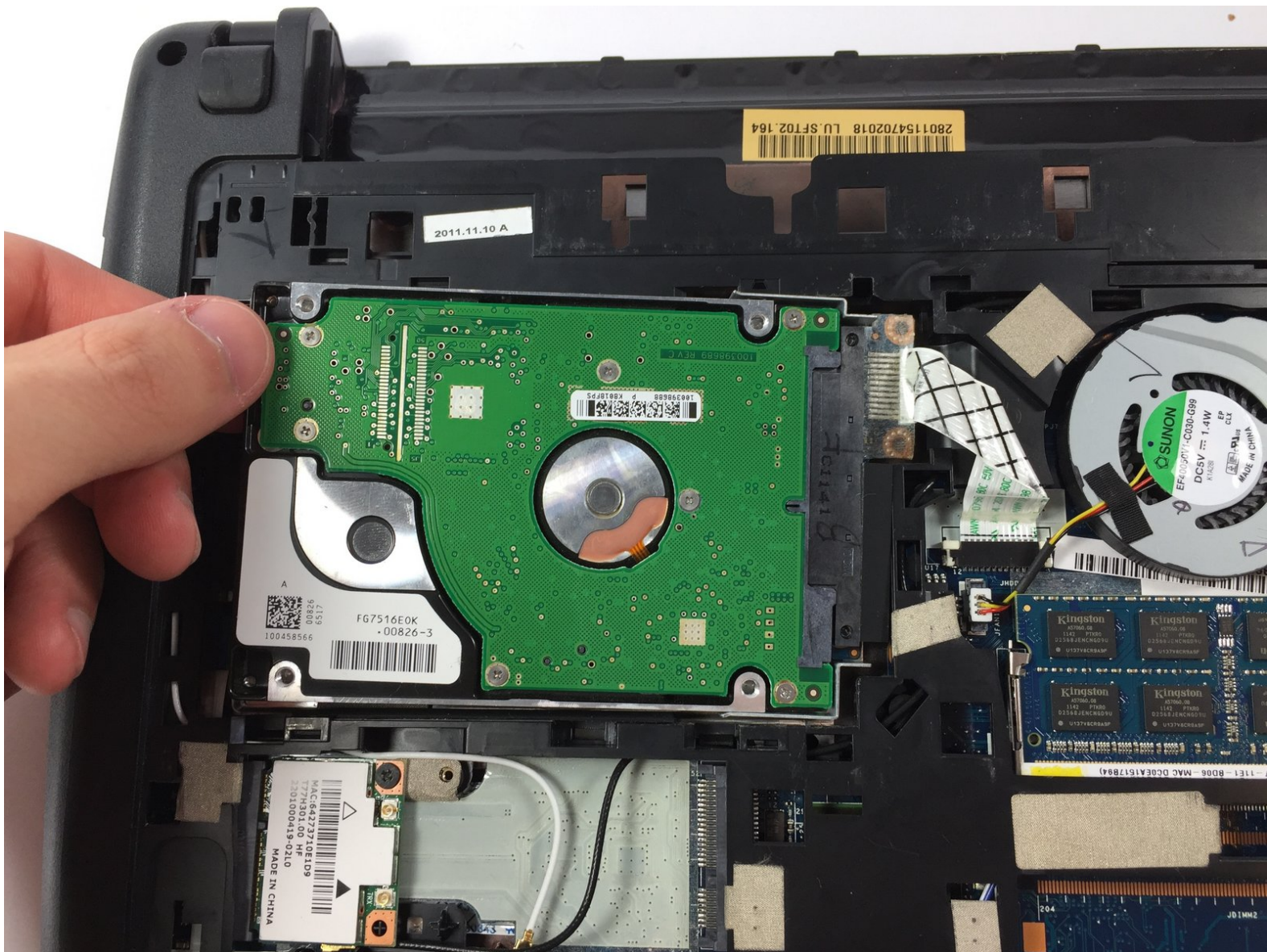




Acer Aspire One 722 Hard Drive Replacement

A guide on how to replace the hard drive on the Acer Aspire One 722.

Written By: Christian Barboza



INTRODUCTION

Hard drives or HDDs contain all of the programs and files used by your computer. It's important to make sure yours is working correctly. If it does not work correctly, it can drastically slow your computer down and even render it useless.

If you're experiencing data issues or simply running out of space, follow along with this guide to replace the hard drive in your Acer Aspire One 722 in no time.

Prior to beginning the guide, power off your device and remove the battery.



TOOLS:

- [Phillips #0 Screwdriver](#) (1)
-

Step 1 — Battery



- Power down the netbook by pressing the power button on the top left corner.

Step 2



- Close the netbook and flip it over so that the back is facing up.

Step 3



- Slide the button below the battery to the right while simultaneously pulling the battery out.

Step 4



- If necessary, remove the old battery and replace it with a new one.

Step 5



- ✦ Check the thin grooves on the side of the battery entry and line the replacement battery up to the grooves.

Step 6 — Hard Drive



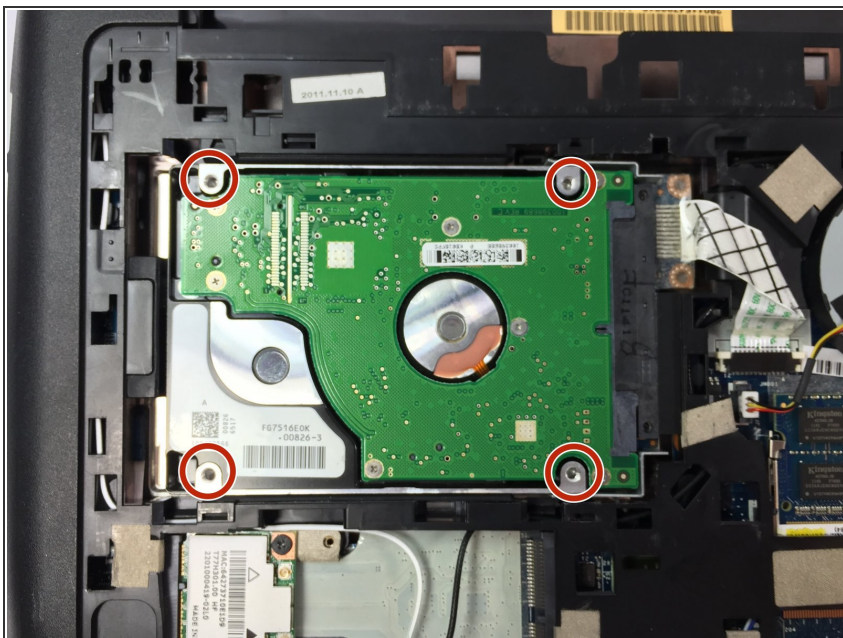
- ⚠ Ensure the Laptop is powered down with the battery removed prior to beginning.
- With the battery cavity facing away from you, use the Phillips #0 to remove the center screw which secures the backplate.
- ✦ Make sure to keep track of these screws for reassembly.

Step 7



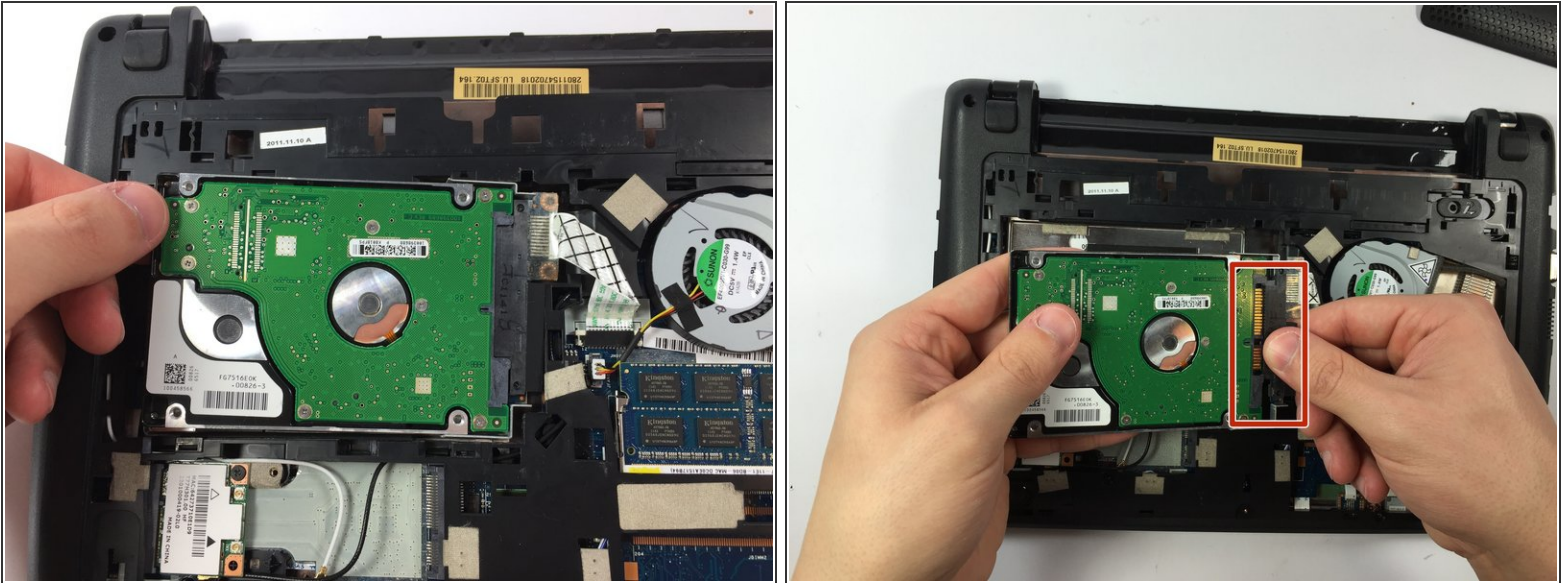
- Gently lift up and pull away the backplate from the chassis to remove.

Step 8



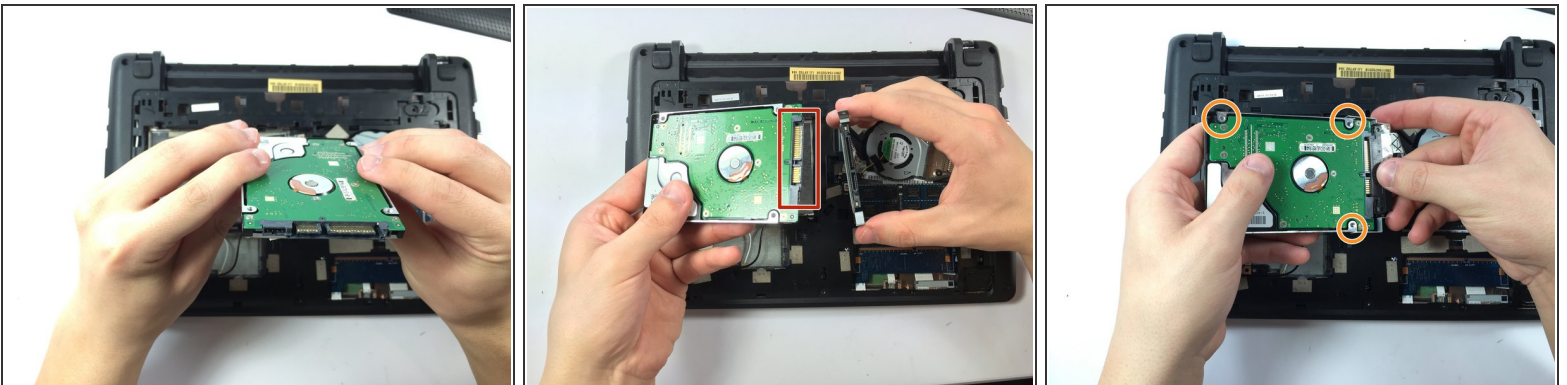
- With the backplate removed, locate the HDD in the upper left corner of the device.
- Use the Phillips #0 screwdriver to remove the four corner screws securing the HDD to the chassis.
- ☑ Make sure to keep track of these screws for reassembly.

Step 9



- Gently lift and secure the HDD with one hand and carefully remove the SATA and power connections with your other hand.
- ⓘ Once removed, store the replaced drive in an anti-static environment to ensure its integrity.

Step 10



- With your replacement HDD in hand, reseat the power and SATA cables removed from the previous drive.
- ⓘ The plugs are different sizes so there is no fear of mixing them up
- With the cables attached, align the four mounting points in the corner of the drive with the chassis and reseat the four Phillips #0 screws that were removed earlier.

To reassemble your device, follow these instructions in reverse order., taking special care in replacing the back cover. and battery.