



Lenovo IdeaPad G50-45 Screen Replacement

How to replace a Lenovo IdeaPad G50-45 Screen.

Written By: Jessy McDermott



INTRODUCTION

This is a guide to replace the faulty screen of the Lenovo IdeaPad G50-45 laptop.

The laptop screen is a component which displays graphics on a liquid crystal display (LCD) screen. Replacement is necessary if the screen becomes physically damaged such as having cracks, multi-colored vertical lines and black or white spots.

Before using this guide, troubleshoot the screen to make sure that physical damage is actually present- oftentimes image distortion and resolution lines can be caused by graphics card or processor failure too. Faulty video cable also causes these problems.

The replacement LCD panel must be compatible to your laptop specifications. This includes screen size, resolution, back-light and the connector type at the bottom of the screen. The exact screen model number can be checked at the backside of the original screen.

Handle the replacement screen with caution as it is fragile and easily damages if dropped or overly pressured. Make sure to power off your laptop completely and disconnect from any external power source prior to beginning this process.



TOOLS:

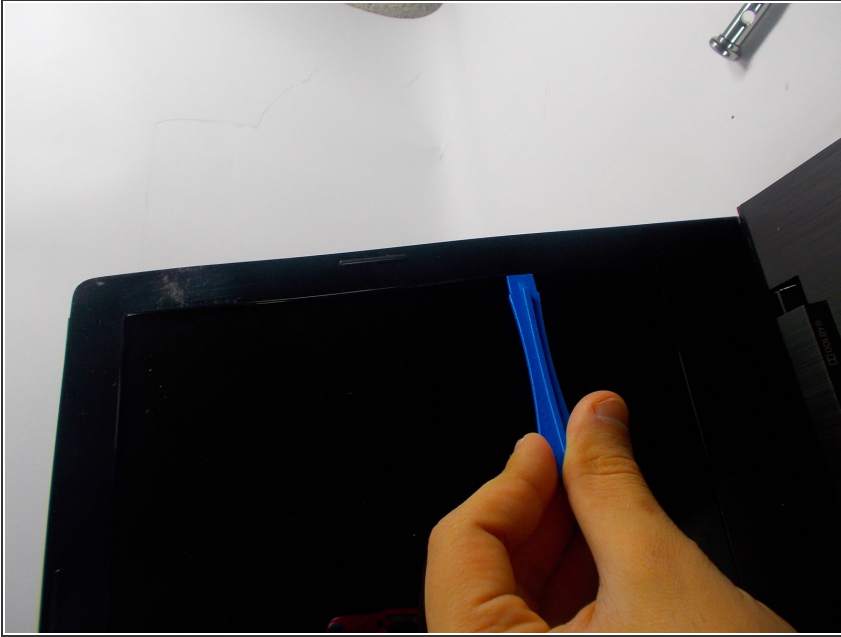
- [iFixit Opening Tools](#) (1)
- [Phillips #2 Screwdriver](#) (1)



PARTS:

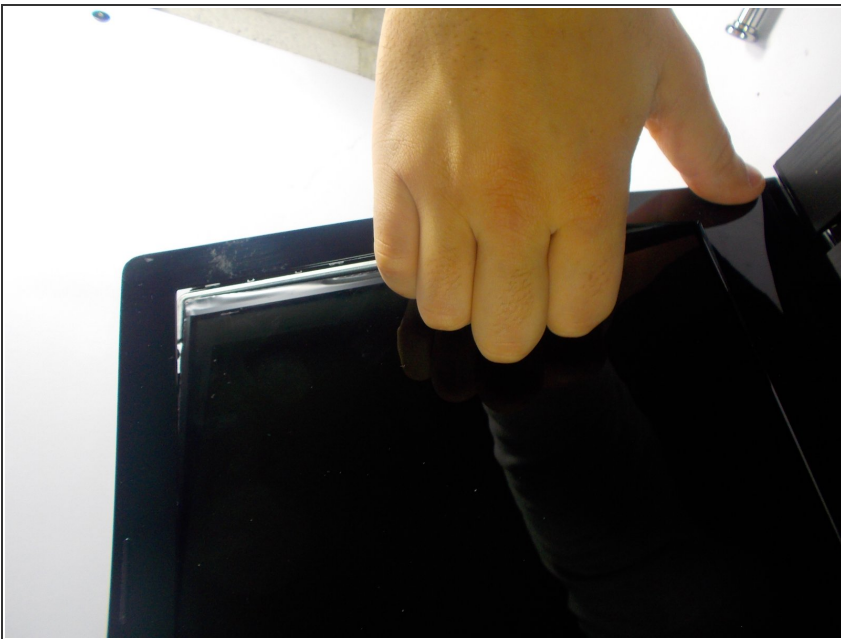
- [Lenovo G50-80 LCD Panel](#) (1)

Step 1 — Screen



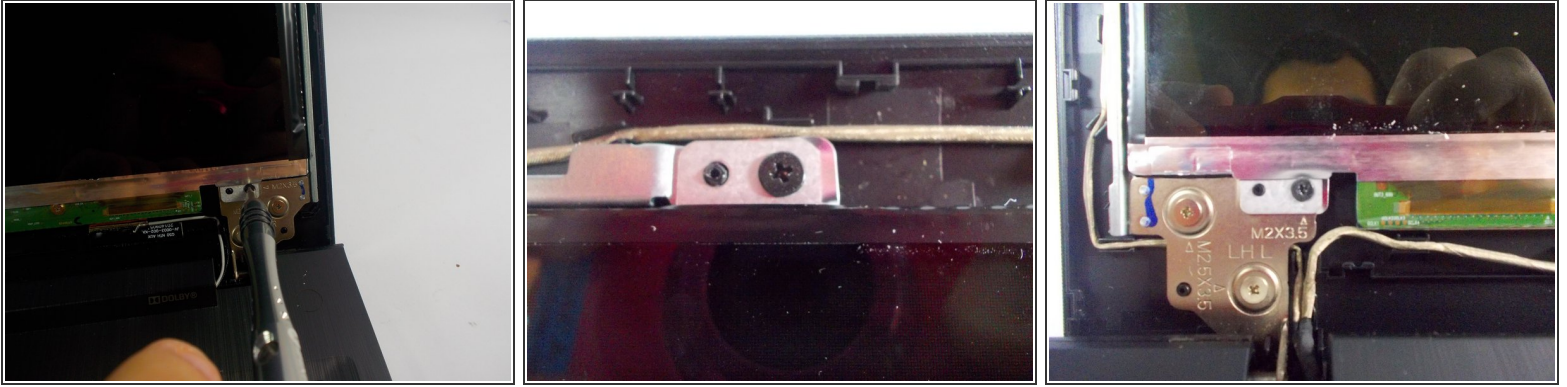
- Remove the bezel by using the iFixit plastic opening tool to lift up an edge.
- ⓘ The bezel is the plastic lining along the edge of the screen.

Step 2



- Finish removing the bezel by using your hand on the inside of the screen and popping it off.
- ⓘ If part of the bezel is stuck, start on the opposite side and work your way back to the area that is stuck.
- ⓘ The plastic on the hinges will pop off with the rest of the bezel.

Step 3



- Remove the 4 screws located in each corner of the screen using the Phillips #2 screwdriver.

Step 4



- Peel back the sticker that attaches the connector to the back of the screen.
 - Disconnect the cable that connects the screen to the computer.
- i** There may be two cables.

Step 5



- Test the new screen by turning it on before putting the bezel back on.

To reassemble your device, follow these instructions in reverse order.