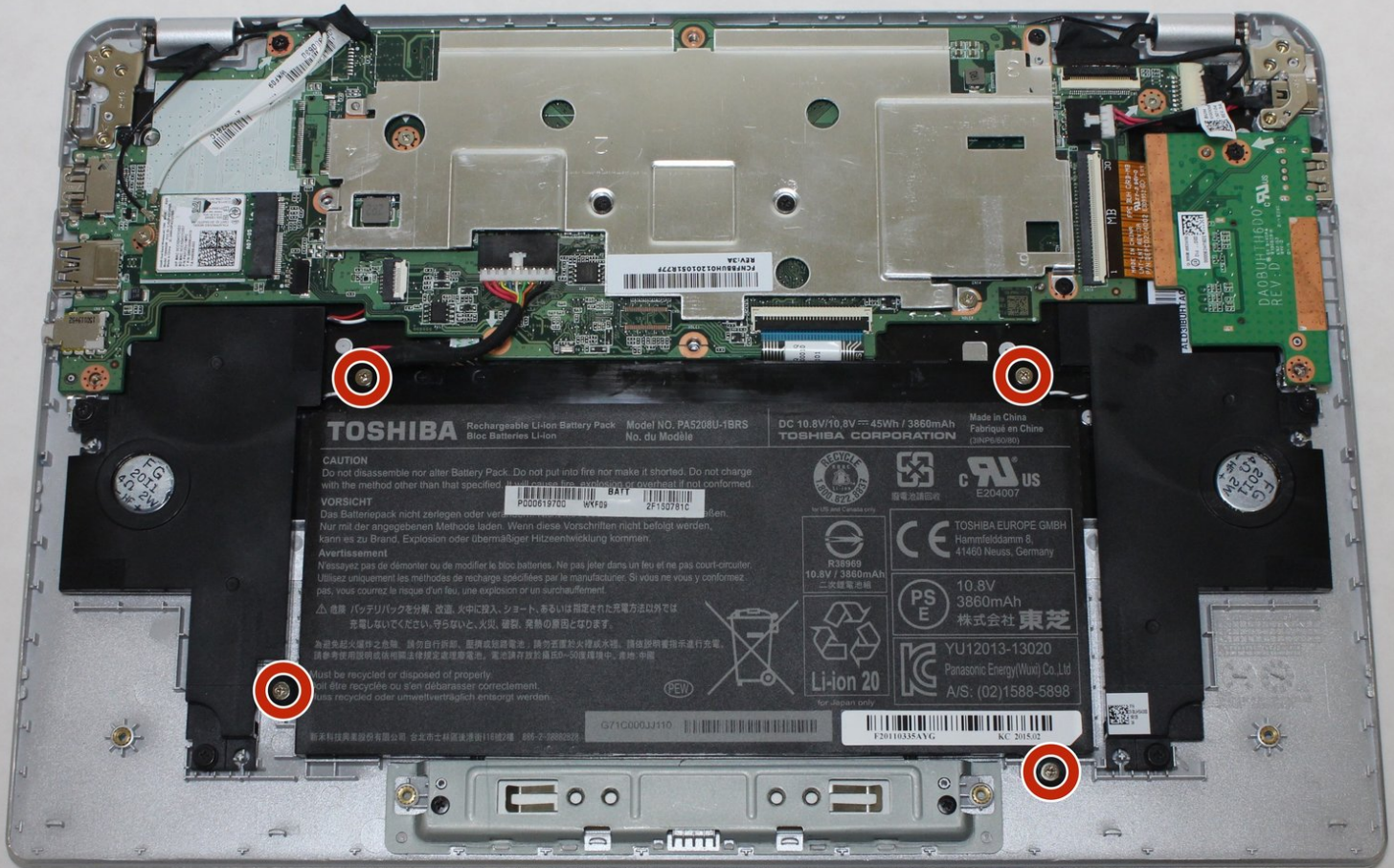




Toshiba Chromebook 2 Battery Replacement

If your Toshiba Chromebook 2 will not hold a charge or will not charge at all, the replacement of your battery is necessary.

Written By: Foster Chaney



INTRODUCTION

In this guide, we will be replacing the battery of the Toshiba Chromebook 2. Many power issues on the Chromebook come from complications with the laptop's battery. Removing the broken battery and replacing it with a functioning battery will ensure the laptop will keep on running.



TOOLS:

- [Phillips #0 Screwdriver](#) (1)
- [Spudger](#) (1)



PARTS:

- [Toshiba PA5208U-1BRS Replacement Laptop Battery](#) (1)

Step 1 — Back Cover



- Remove all external devices from the Toshiba Chromebook 2.

Step 2



- Close the Toshiba Chromebook 2 and turn it over so that the bottom of the laptop is facing upwards toward you with the lettering on the bottom facing right side up.

Step 3



- Remove the 8 visible Phillips 8.25 mm screws using the Phillips #0 screwdriver.

Step 4



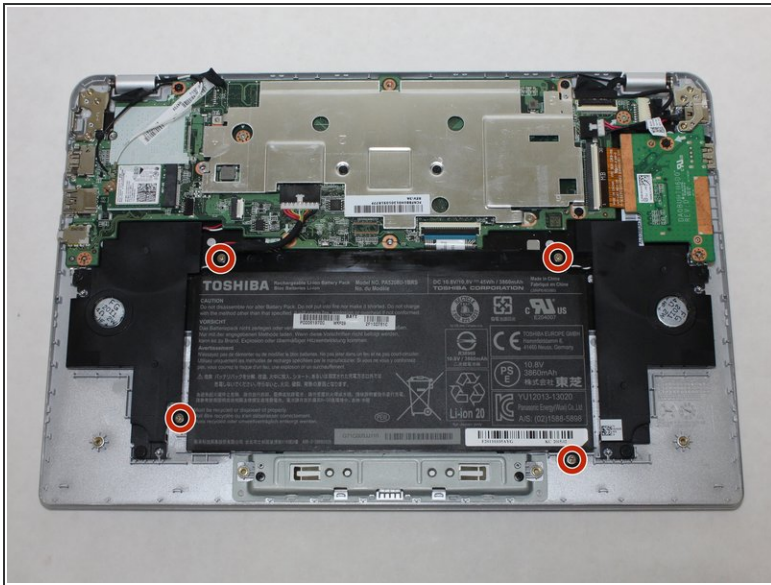
- Remove 2 hidden Phillips 8.25 mm screws located underneath the rubber grips at the back (opposite the hinges) with the Phillips #0 screwdriver.
- ⓘ The rubber grips are glued in place, so you'll need to peel them up with a spudger or other pry tool.

Step 5



- Remove the back panel by pulling up on 2 adjacent corners.

Step 6 — Battery



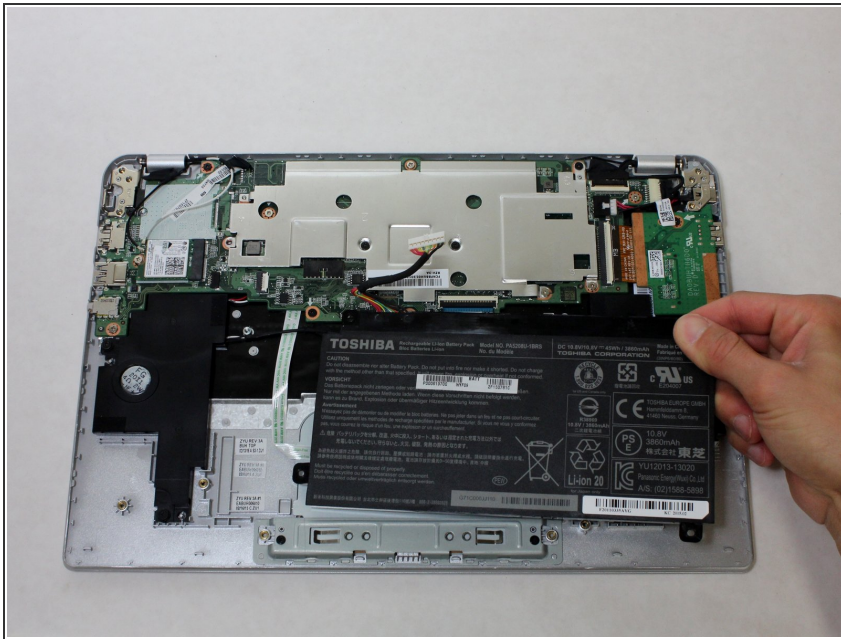
- Remove the 4 Phillips 2 mm screws holding the battery in place with the Phillips #0 screwdriver.

Step 7



- Press down on the white clip and softly pull the wires out of the port to disconnect battery from the motherboard.

Step 8



- Remove the battery by gently pulling up on the bottom corners.

To reassemble your device, follow these instructions in reverse order.