



Turtle Beach Ear Force XO One Adapter Buttons Replacement

This guide will explain how to disassemble the controller adapter so that the buttons can be replaced.

Written By: Joseph Lane





TOOLS:

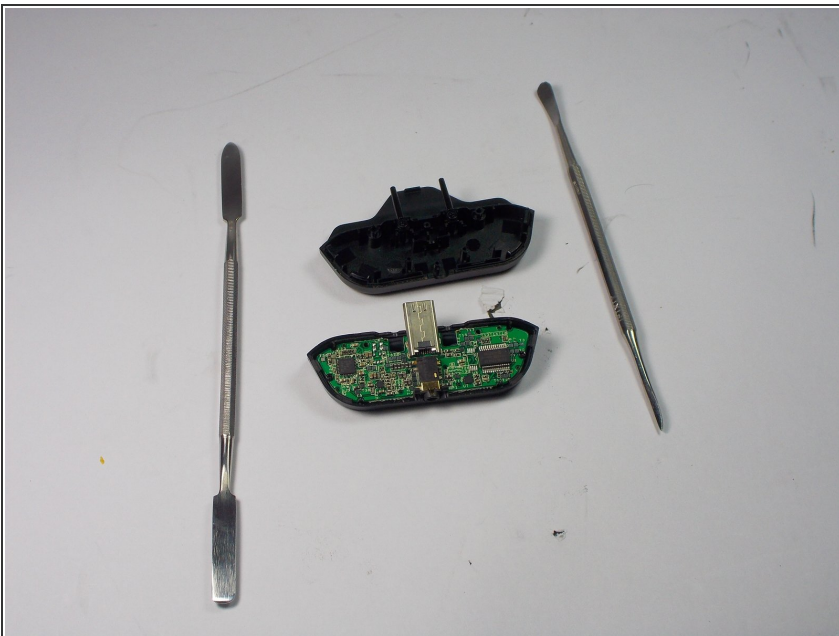
- [Phillips #00 Screwdriver](#) (1)
- [Spudger](#) (1)

Step 1 — Adapter Buttons



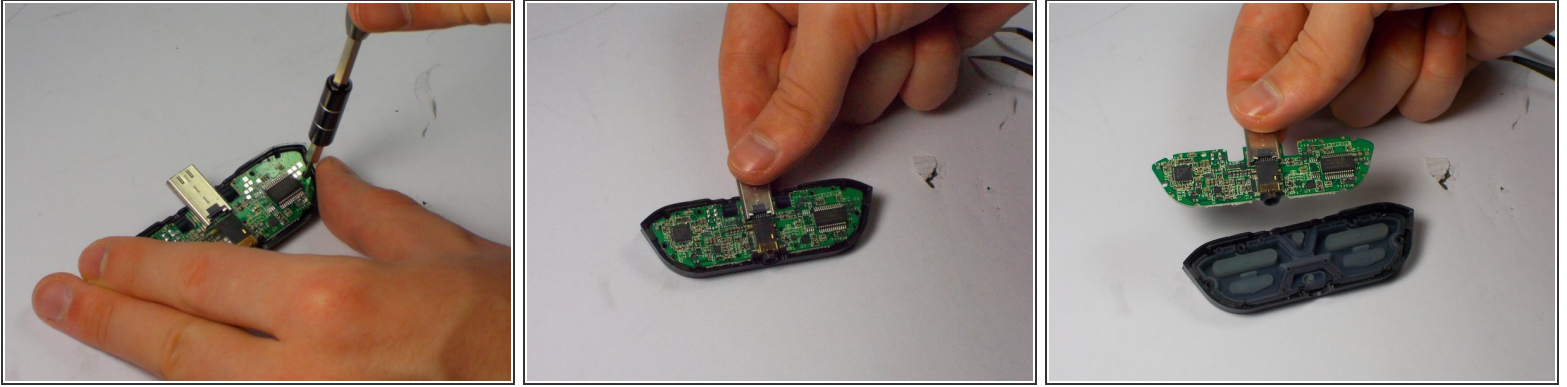
- Using a Philips head screwdriver, unscrew the two screws on the back of the adapter.
- The recommended screwdriver bit size is a PH 000.

Step 2



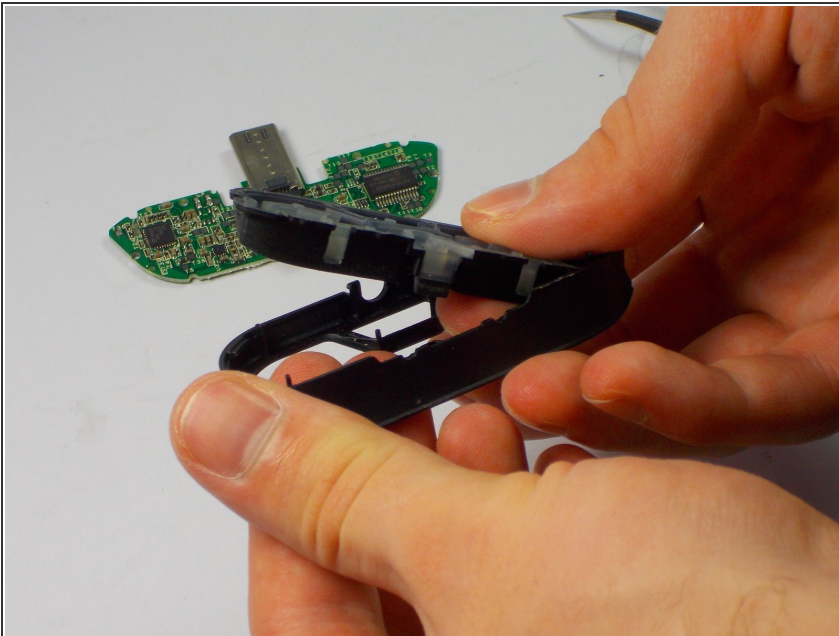
- Using your hands and/or a prying tool, carefully pry open the adapter.
- This step may require a bit of force to complete.
- Be aware that the adapter is held together with clips on the inside at some locations.
- Do not be alarmed if it makes a snapping sound as it comes apart, this is most likely just the sound of the clips detaching.

Step 3



- Now, using the same Philips head screwdriver, unscrew the two screws on either side that hold the circuit board to the adapter case.
- Once the screws are out, you can remove the circuit board from the casing.

Step 4



- Push the rubber piece containing the buttons out of the plastic adapter casing.
- Then, replace it with a new one.

To reassemble your device, follow these instructions in reverse order.