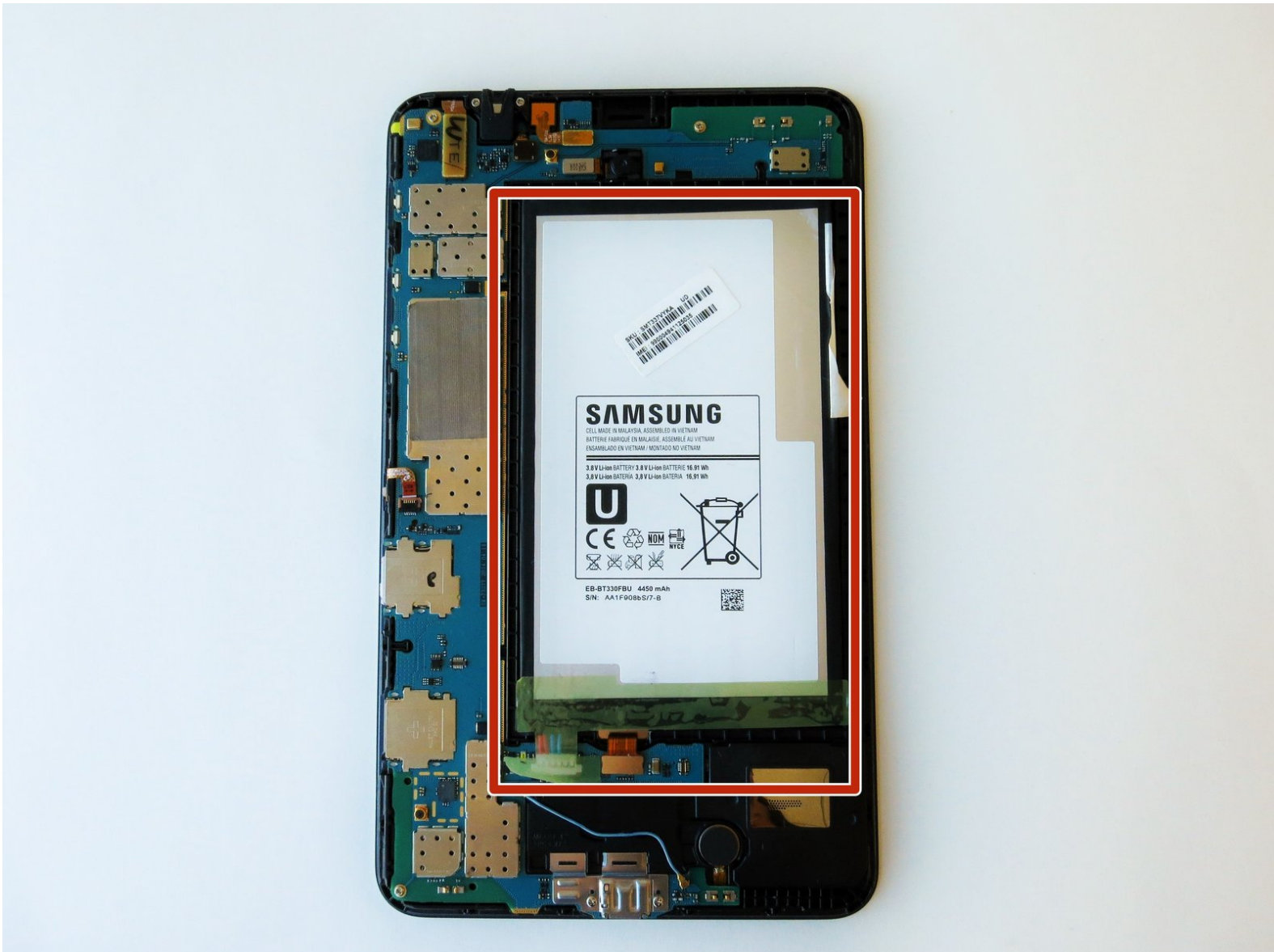




Samsung Galaxy Tab 4 8.0 Verizon Battery Replacement

Replace a drained or damaged battery in the Samsung Galaxy Tab 4 8.0 Verizon.

Written By: Ofelia Cruz



INTRODUCTION

Battery life is crucial to maximizing your tablet's utility. This guide will show you the step by step replacement of the Samsung Galaxy Tab 4 8.0 battery. Although replacement is fairly easy, if your tablet's battery has more adhesive than usual, extra force will be needed.



TOOLS:

- [iFixit Opening Tool](#) (1)
- [Spudger](#) (1)



PARTS:

- [Samsung Galaxy Tab 4 8.0 Battery](#) (1)
- [Galaxy Tab 4 8.0 Rear Panel](#) (1)

Step 1 — Rear Case

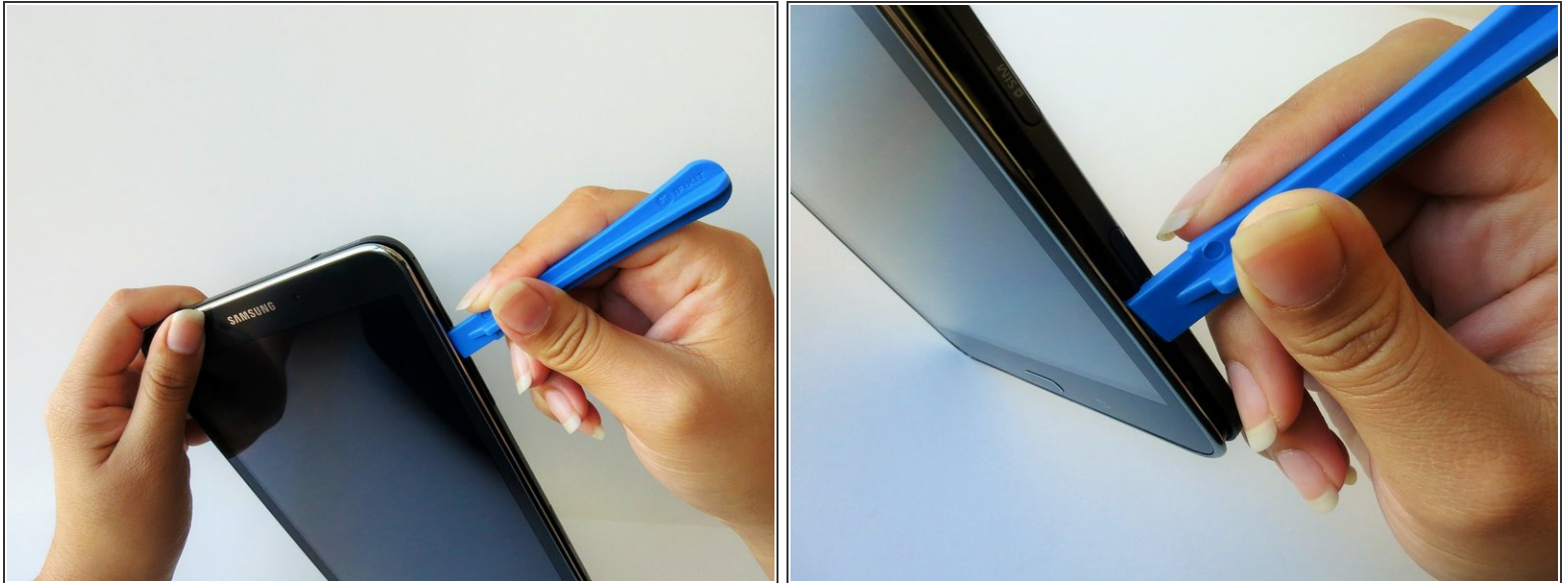


⚠ Before disassembling your Samsung Galaxy Tab 4 8.0, be sure it is powered off and you remove the SIM and Micro SD cards.

- At the top of the tablet, nudge the blue plastic opening tool between the back plastic casing and the front panel's metal rim.

⚠ Do not use excessive force when prying the clips, fastening the casing together, open because they can easily break.

Step 2



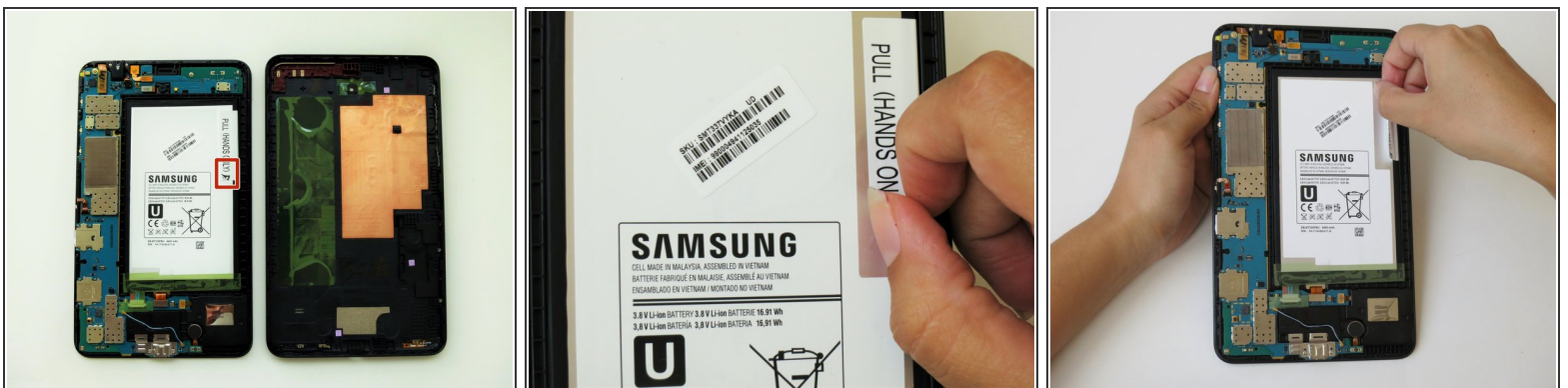
- Continue prying the blue plastic opening tool along the perimeter of the tablet to separate the back plastic casing from the front assembly panel.
- ⓘ As right-handers, we found it easiest to move clockwise and use more pressure around the corners to facilitate the process.
- ⓘ You might hear several popping noises caused by the plastic clips coming undone.

Step 3



- To avoid damaging the screen, gently set the tablet with the LCD screen faced down.
- Firmly grasp the back plastic casing and lift it away from the front assembly panel.

Step 4 — Battery



- Peel up the detachable corner of the white plastic sticker that reads “pull (hands only).”
- ⓘ Remove the sticker to form a tab.

Step 5

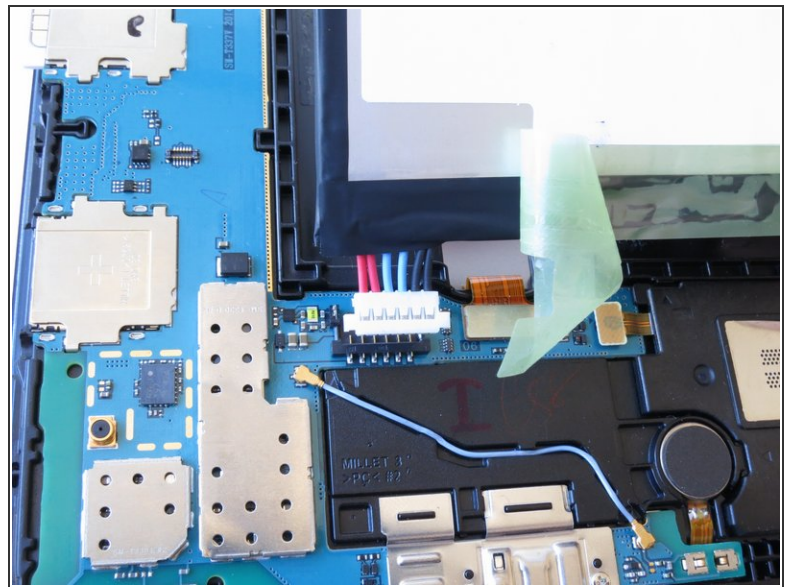
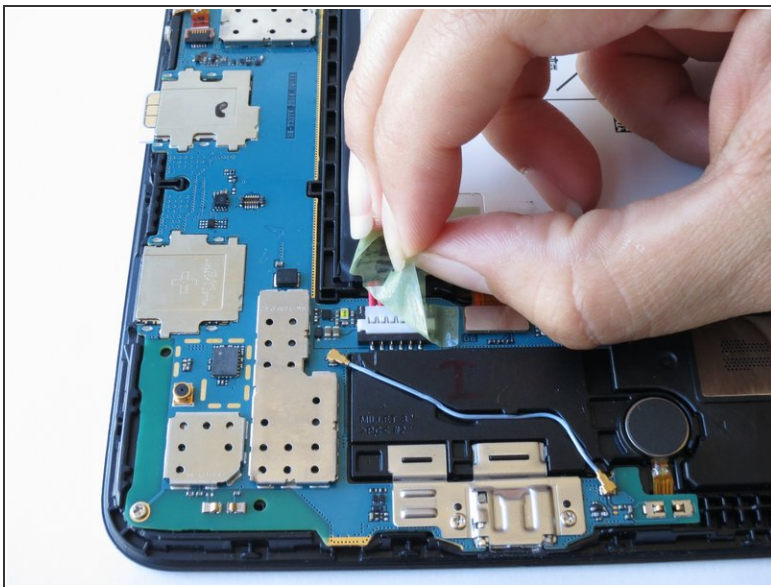


- Using your thumb and index finger, pinch the tab and pull it up to remove the top right corner of the battery from the front panel assembly.

- ⓘ If battery resistance is encountered due to adhesive, use the flat end of a spudger to run in between the battery and the front panel assembly.

⚠ Do not completely detach the battery just yet, doing so can cause damage to the red and blue cables located at the bottom of the battery.

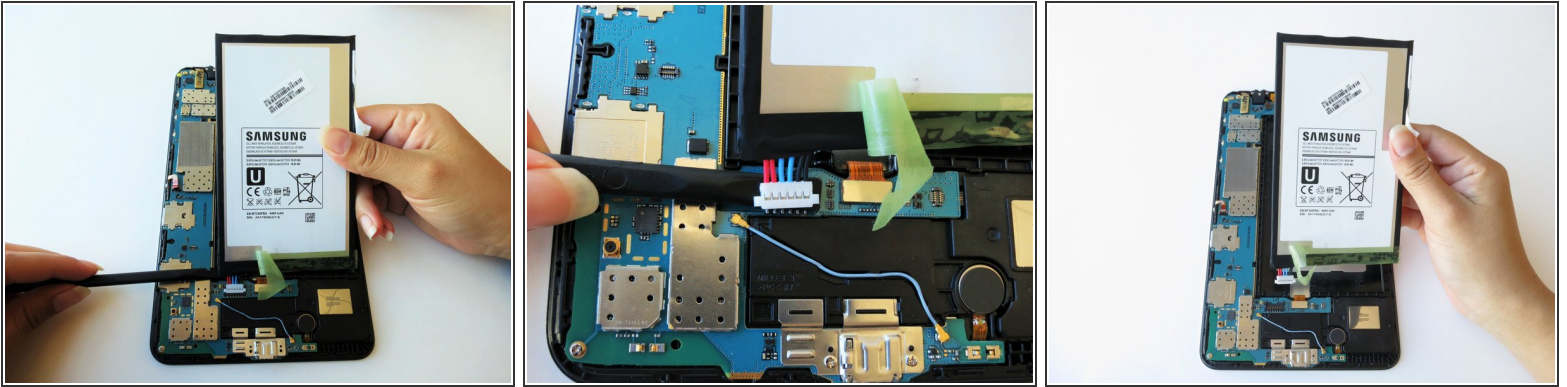
Step 6



- Starting at the bottom left side of the battery, gently remove the green tape.

- ⓘ Salvage the green tape if the replacement battery does not include one.

Step 7



- Run the spudger under the battery to disconnect the red and blue cable connector from the circuit.
- Lift the battery towards you, away from the front panel.

To reassemble your device, follow these instructions in reverse order.