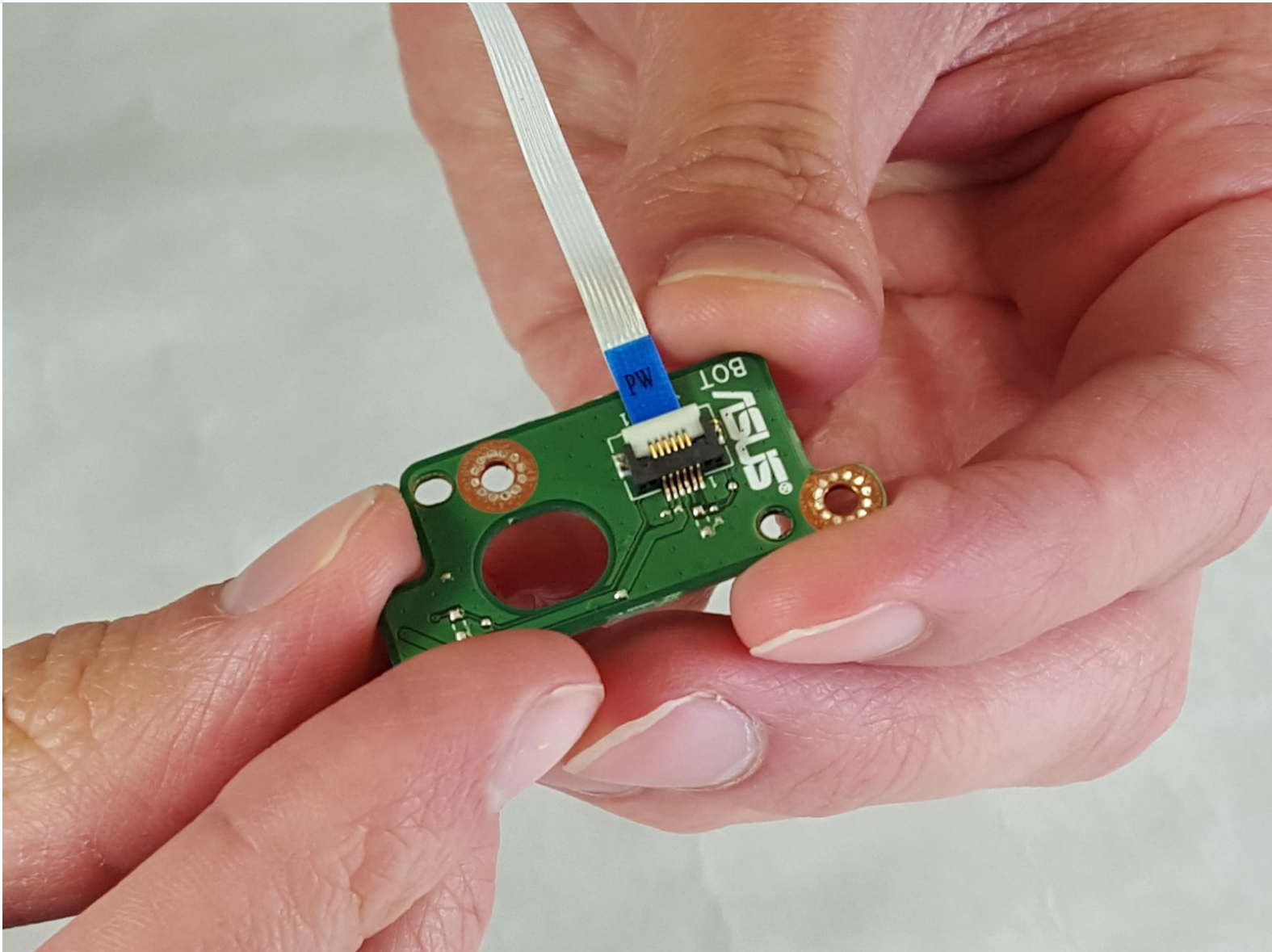




# ASUS D550MA-DS01 Power Button Replacement

This guide will give you a step-by-step process on how to replace your Power Button.

Written By: Calvin Wieczorek



---

## INTRODUCTION

The Power Buttons serves as the primary interface to boot up your computer. This guide will give you a step-by-step procedure on how to replace your Power Button in the case that it goes bad.


---

### TOOLS:

- [Phillips #1 Screwdriver](#) (1)
  - [Spudger](#) (1)
-


## Step 1 — Keyboard Module



-  Before you begin, be sure to turn off your laptop and unplug it from the outlet.
- Use a Philips #1 screwdriver to remove the nine screws from the back cover.

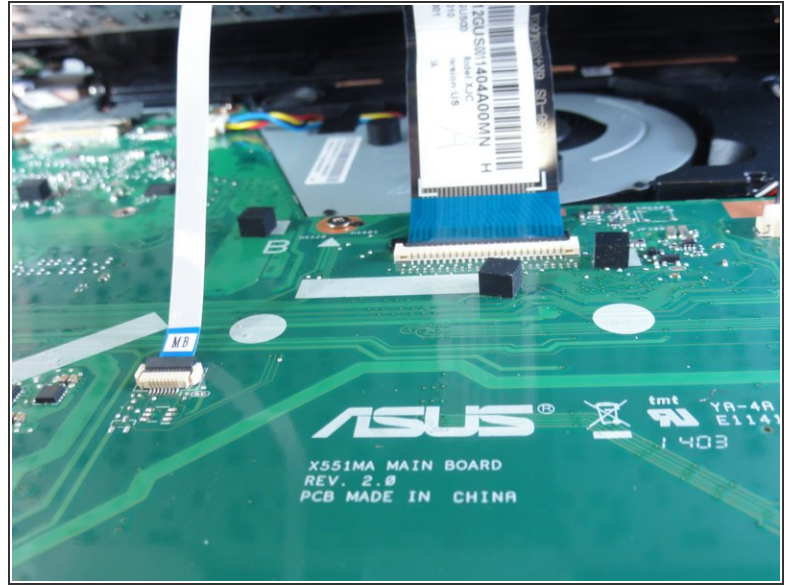
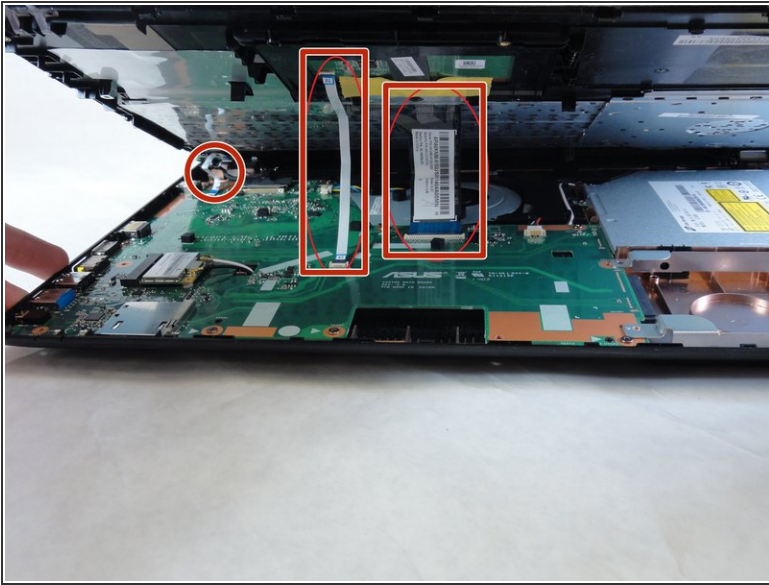
## Step 2



- Turn the laptop over and open the display.
  - Insert the flat edge of the spudger into the crease of the keyboard cover.
  - While the spudger is in the crease, carefully pry open the casing by sliding the spudger along the edge.
-  Do not use excessive force to pry open the lid. You should hear each plastic clip snap open as you run the spudger along the edge.

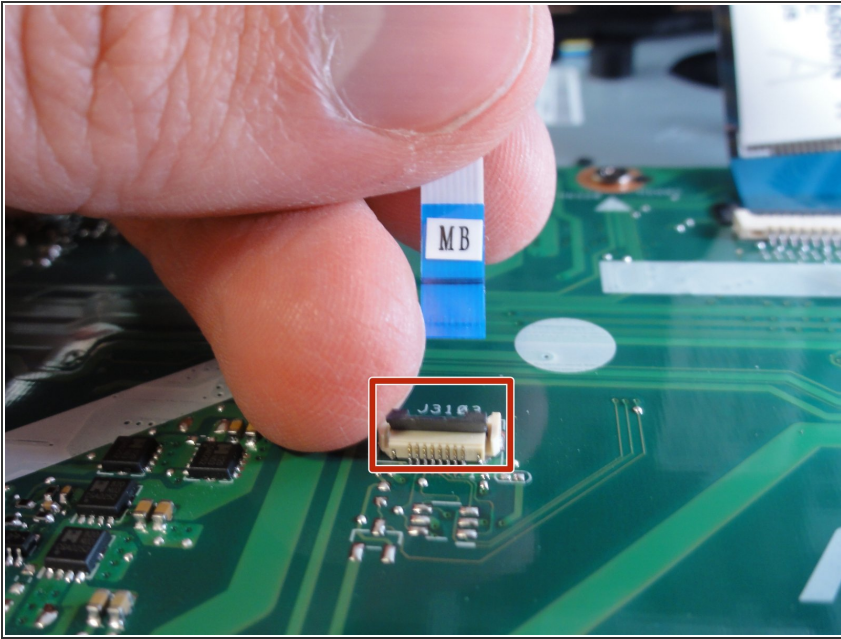


## Step 3



- ❗ Make sure that the entire cover has been released from the plastic clips.
- Slowly lift the cover open from the front of the laptop, but do not completely remove it.
- Note the locations of the three white and blue data cables connecting to the keyboard to the computer's main board.

## Step 4



**i** If you are only replacing the battery, you can skip this step and the next. Shift the keyboard module away from the display and set it such that the fragile flex cables are not strained.

- Disconnect the three data cables from the motherboard.

**i** To unlock a [ZIF connector](#), use the tip of a spudger or your fingernail to flip up the small, hinged locking flap. Carefully slide the unlocked cable out of the socket.

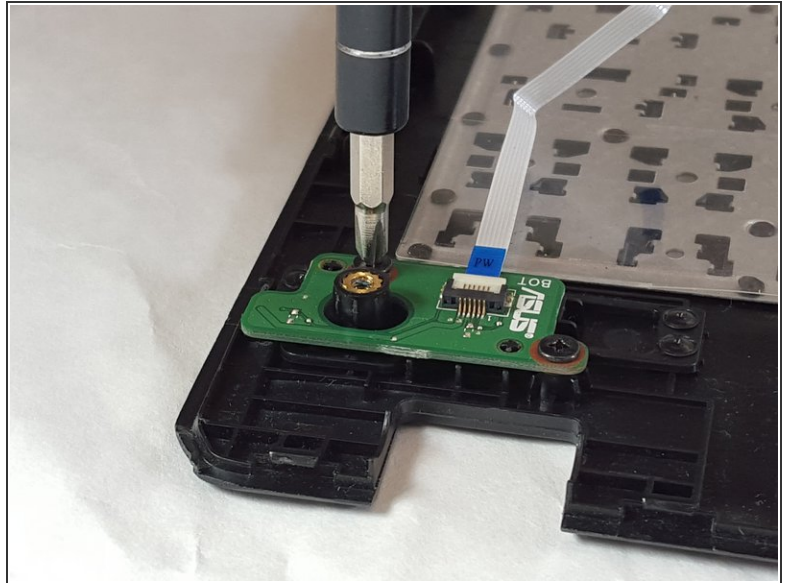
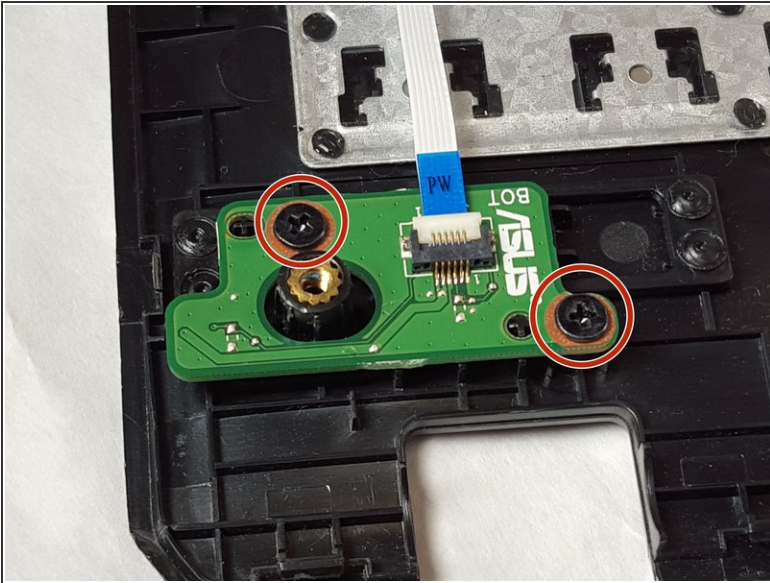
## Step 5



- Remove the fully disconnected keyboard module from the laptop.

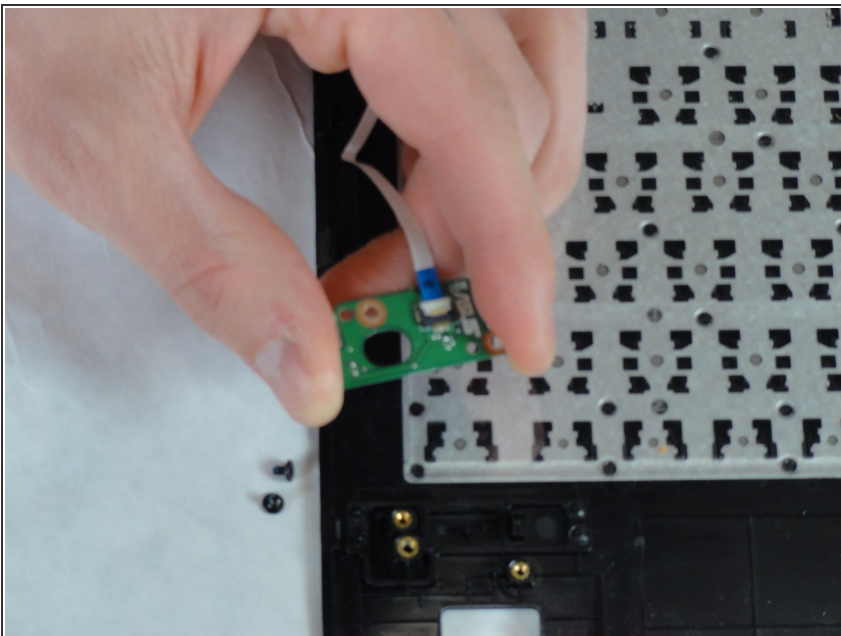


## Step 6 — Power Button



- Lay the keyboard with the key-side down. The circuit for the Power Button is just beneath the location of the button.
- Unscrew the 2 screws holding the circuit in place, using the Philips #1 Screwdriver.

## Step 7



- Lift upward and remove the circuit board for the Power Button from the Keyboard Module.

To reassemble your device, follow these instructions in reverse order.