



DigiLand DL801W Screen Replacement

This guide will help you replace the screen on the DigiLand DL801W.

Written By: Preston Bremer



INTRODUCTION

Be careful as you follow, and complete the steps listed in this guide. If a component is not coming out smoothly, make sure that all screws that need to be removed were removed. As you're removing the Screen or operating near it, watch out for any flex cable to avoid damaging them.



TOOLS:

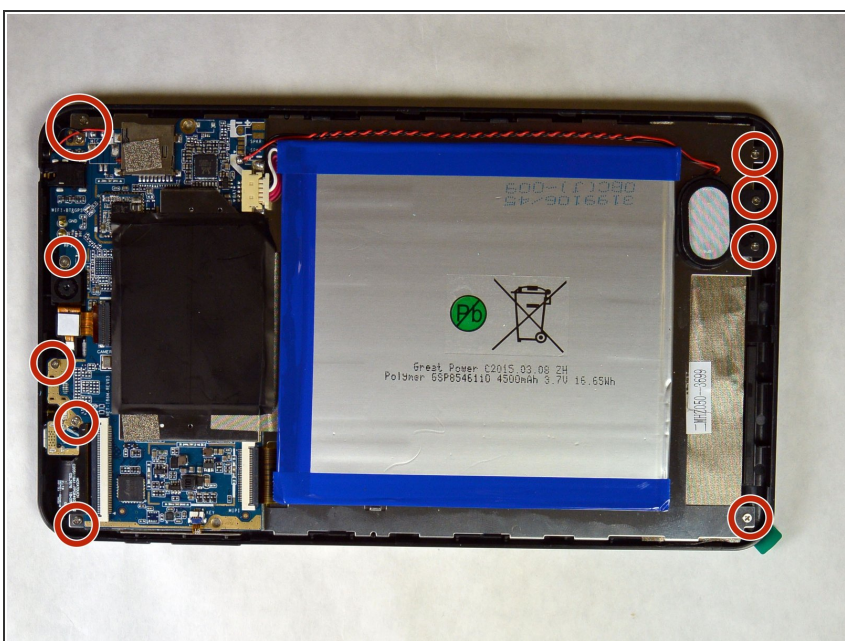
- [iFixit Opening Tools](#) (1)
 - [Spudger](#) (1)
 - [64 Bit Driver Kit](#) (1)
-

Step 1 — Screen



- ❗ Before opening your DigiLand Tablet, ensure that the MicroSD card is removed.
- Hold the tablet in one hand (not your primary hand) so that the bottom edge of the tablet is facing you and the back of the tablet is facing up.
- Using a blue plastic opening tool, gently insert the tool between the back panel and the main body.
- Going around the edge of the tablet, gently pry open the back panel. As you go around, you will hear a click.

Step 2




- Once the back panel has been removed, it is best to set it aside in a safe location.
- By using the J000 screwdriver, remove the 10 screws from the back. When the tablet is oriented like the picture, there are 6 screws to the left and 4 screws to the right. Set aside the screws in a safe place for re-installation.

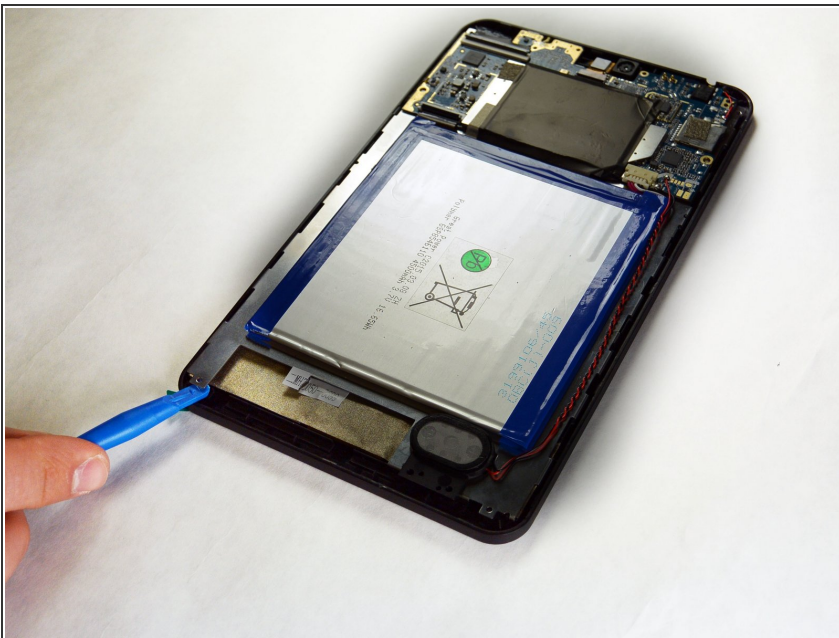
Step 3




- Disconnect the any wires that are connected to the motherboard.

 Be careful not to damage any of the wires. If damaged, the tablet may not work correctly after repairing.

Step 4



 Make sure not to damage the motherboard and components.

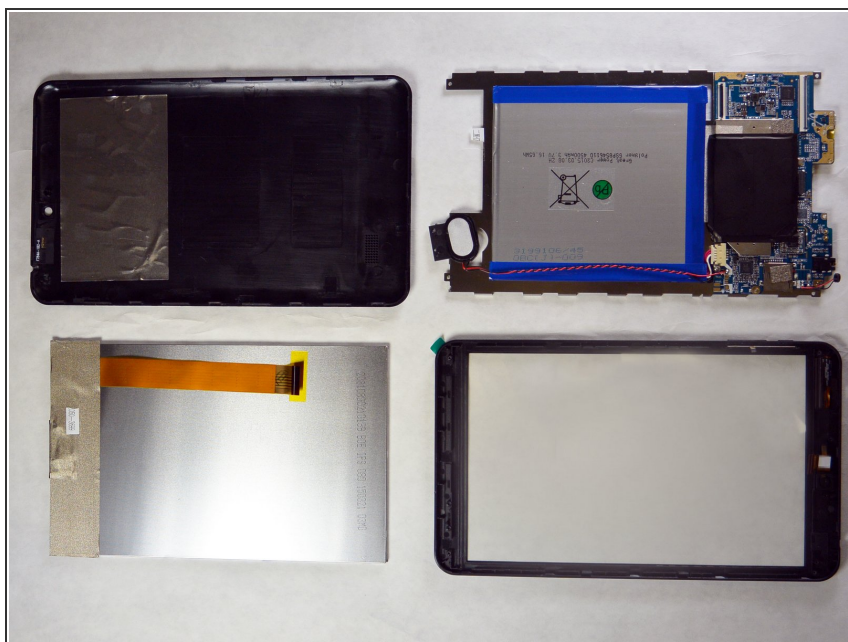
- After removing all of the screws and disconnect any wires, use the blue plastic opening tool and starting from the bottom near the battery, carefully lift the back metal plate and motherboard out. Set aside in a secure place.

Step 5



- After removing the motherboard, remove the LCD screen.
- ⓘ There are tabs around the LCD screen. Use the spudger to help remove.

Step 6



- After removing the LCD screen, you should have four main components: The back cover, the motherboard and bracket, the LCD screen, and the front cover.
- The screen is connected to the front cover. Carefully remove the cracked screen. The screen is connected by an adhesive.

To reassemble your device, follow these instructions in reverse order.