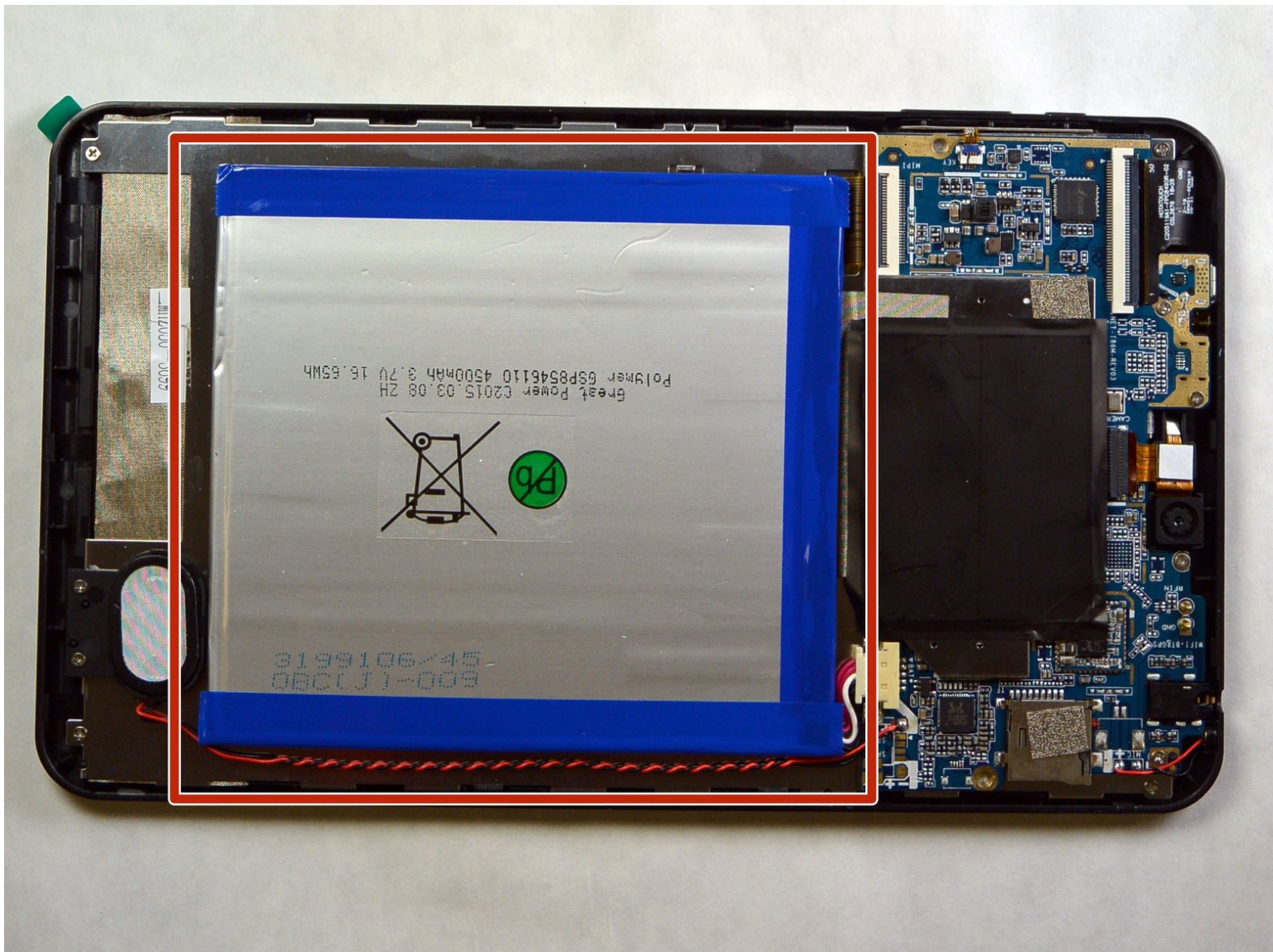




# DigiLand DL801W Battery Replacement

This guide will walk you through the process of replacing your DigiLand DL801W battery. Be careful as you follow, and complete the steps listed in this guide. If a component is not coming out smoothly, make sure that all screws that need to be removed were

Written By: Travis Mangum





## TOOLS:

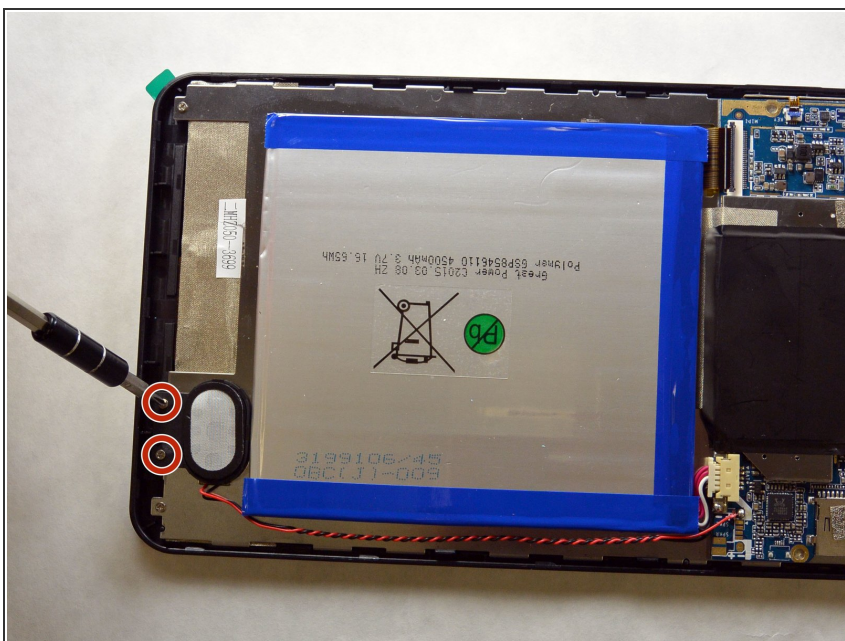
- [iFixit Opening Tools](#) (1)
- [Spudger](#) (1)
- [64 Bit Driver Kit](#) (1)

## Step 1 — Speaker



- ❗ Before opening your DigiLand Tablet, ensure that the MicroSD card is removed.
- Hold the tablet in one hand (not your primary hand) so that the bottom edge of the tablet is facing you and the back of the tablet is facing up.
- Using a blue plastic opening tool, gently insert the tool between the back panel and the main body.
- Going around the edge of the tablet, gently pry open the back panel. As you go around, you will hear a click.

## Step 2

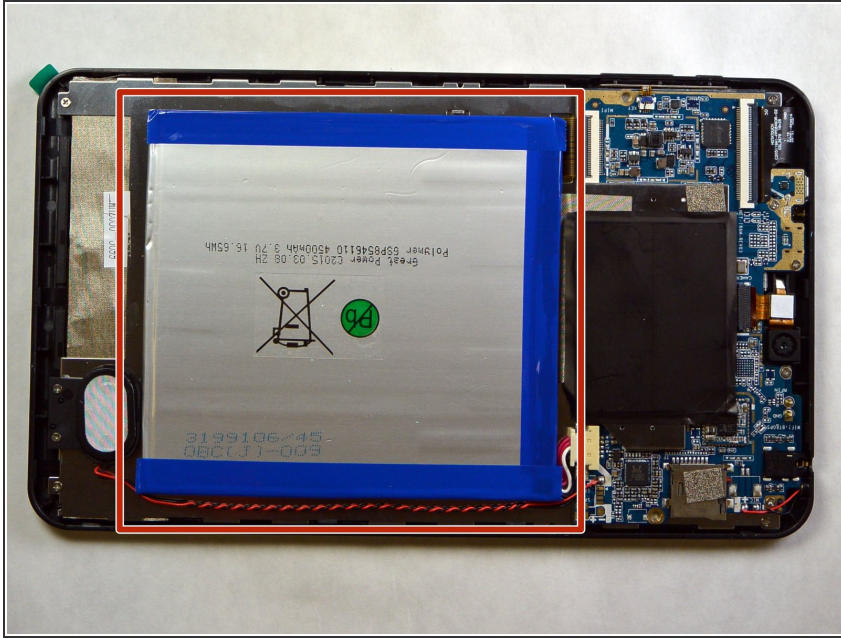


- Remove the two JIS #000 screws that hold the speaker bracket in place. Be sure to place the screws in a safe place to avoid losing them.
- Where the red and black wires connect to the motherboard, use a soldering iron to remove the defective speaker.



- ❗ Complete removal of the speaker from the motherboard is not necessary. It is just recommended that the bracket be removed to allow more room for battery removal.

### Step 3 — Battery



- Using the black spudger, insert the flat edge between the battery and the metal plate. Continue until the battery is completely separated from the metal plate.
  - Once the battery is separated from the metal plate, it is safe to detach the wires from the motherboard.
- ⚠ When attaching the new battery, ensure the metal plate is clean and free of debris.

To reassemble your device, follow these instructions in reverse order.