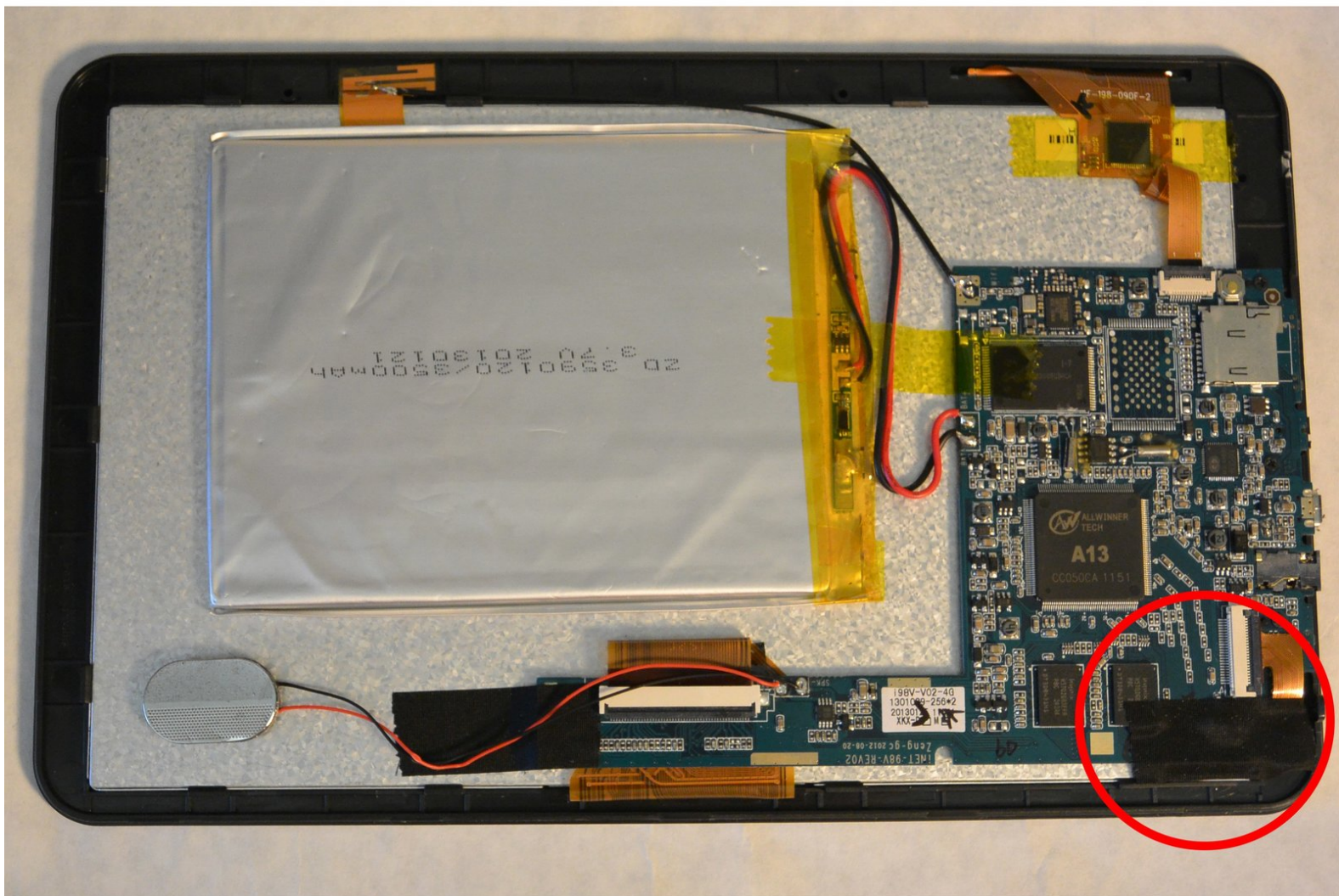




# Digital2 D2-912 Camera Module Replacement

To replace the camera module in the corner of the tablet.

Written By: Jason Wignot



## INTRODUCTION

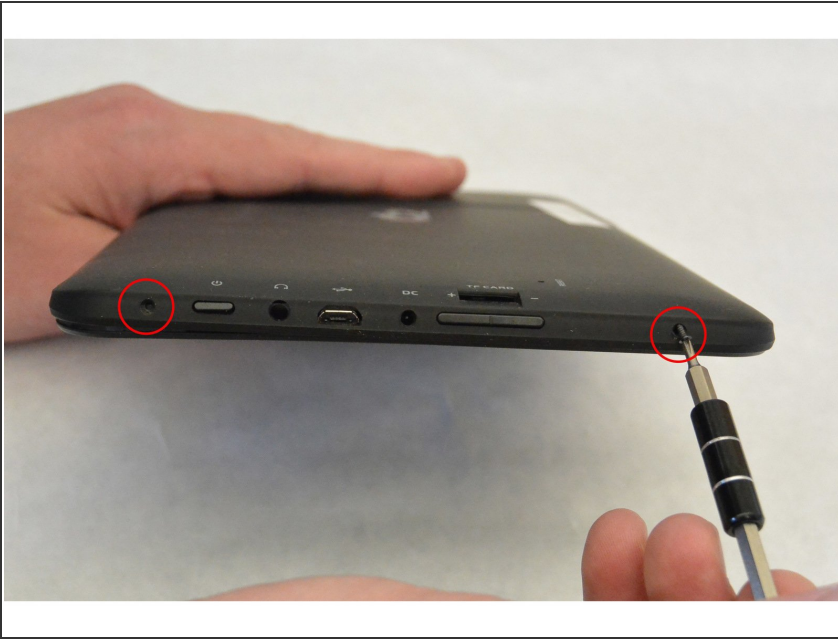
We will be replacing the small camera module in the tablet. This may be necessary due to lint/dust buildup in or around the camera lens.



### TOOLS:

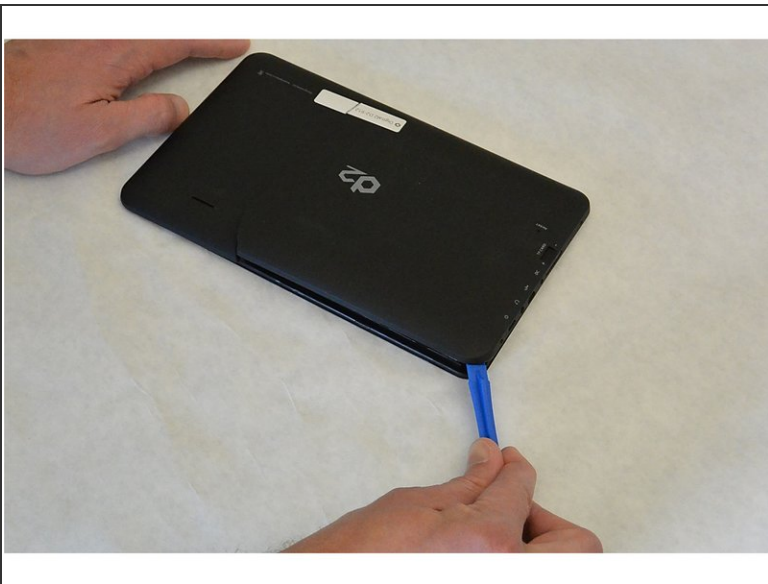
- [Phillips #00 Screwdriver](#) (1)
  - [iFixit Opening Tool](#) (1)
-

## Step 1 — External Cover



- Remove the two Phillips #00 screws from the bottom of the case.

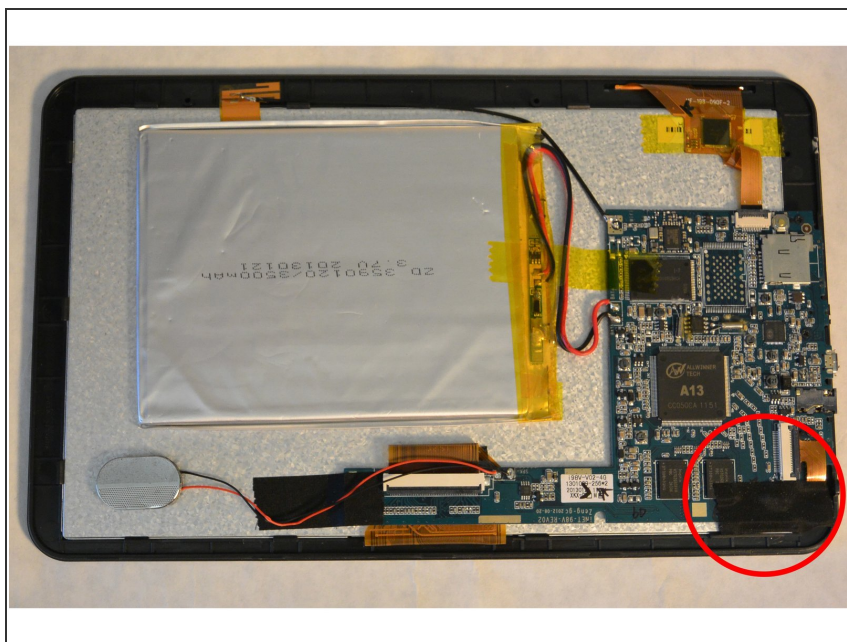
## Step 2



- Wedge the opening tool in the space between the back and the front of the tablet.
- Carefully work your way around the perimeter, wedging the opening tool between the front and back of the tablet.
- When the back of the tablet is mostly detached from the front, carefully pull it away completely.

This document was generated on 2022-02-26 03:17:21 AM (MST).

## Step 3 — Camera Module



- Peel the black tape back and pull the black tab back (the tab should come up, not slide).
- The camera module should then easily come out. Insert your replacement module.

To reassemble your device, follow these instructions in reverse order.