



# VTech Touch and Swipe Baby Phone

## Touchscreen Contact Cleaning

Replace the touchscreen of your VTech Touch and Swipe Baby Phone.

Written By: Sean Webb



---

## INTRODUCTION

This guide will show the necessary steps to clear the touchscreen contacts on a VTech Touch and Swipe Baby Phone if it has become unresponsive. In order to clean the touchscreen, you will need to unscrew the battery casing and remove the display from the device. If cleaning the touchscreen contacts does not fix the problem, replace the touchscreen of the VTech Touch and Swipe Baby Phone. This guide will also teach you how to re-align the display.



### TOOLS:

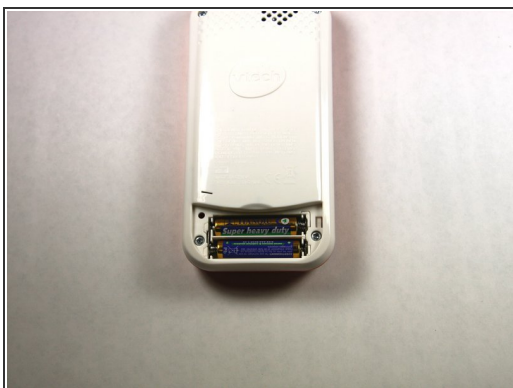
- [Phillips #1 Screwdriver](#) (1)
  - [Phillips #0 Screwdriver](#) (1)
-

## Step 1 — Battery



- Using a Phillips #1 screwdriver, remove the 4.8mm screw on the battery cover by twisting the screwdriver counter-clockwise.

## Step 2



- Remove the two AAA batteries by pulling on one end of the battery and lifting it straight out.

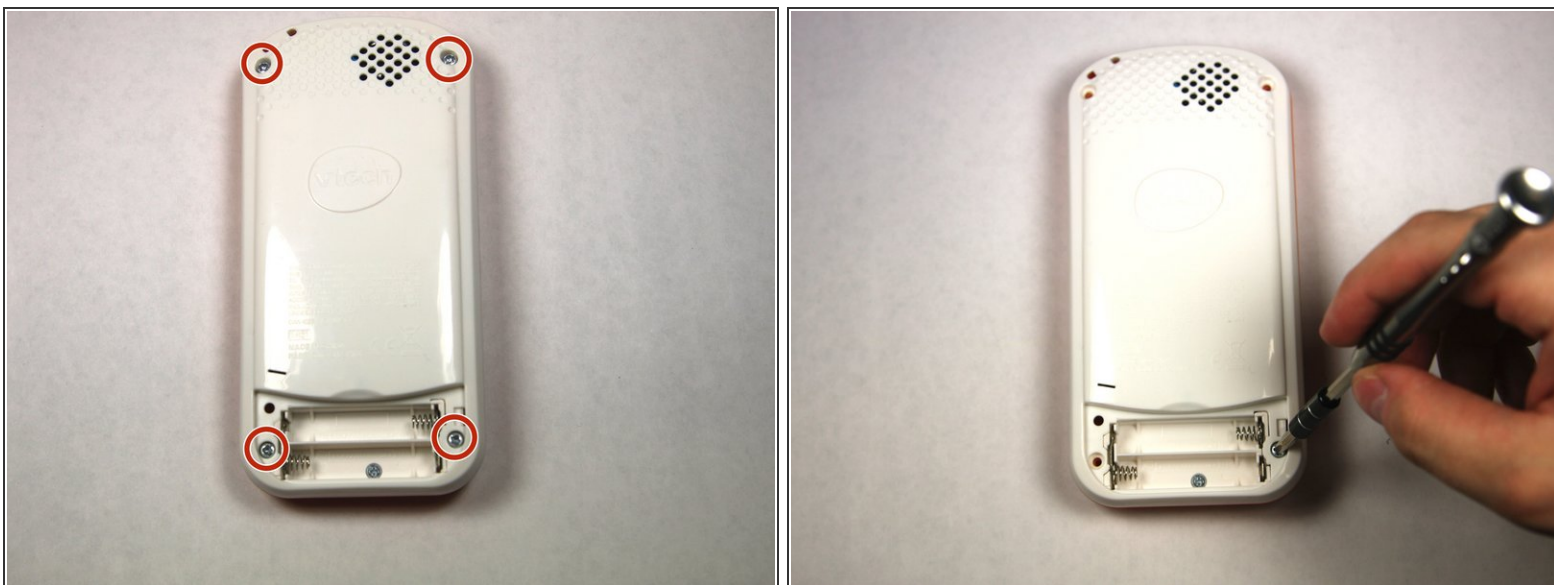


### Step 3



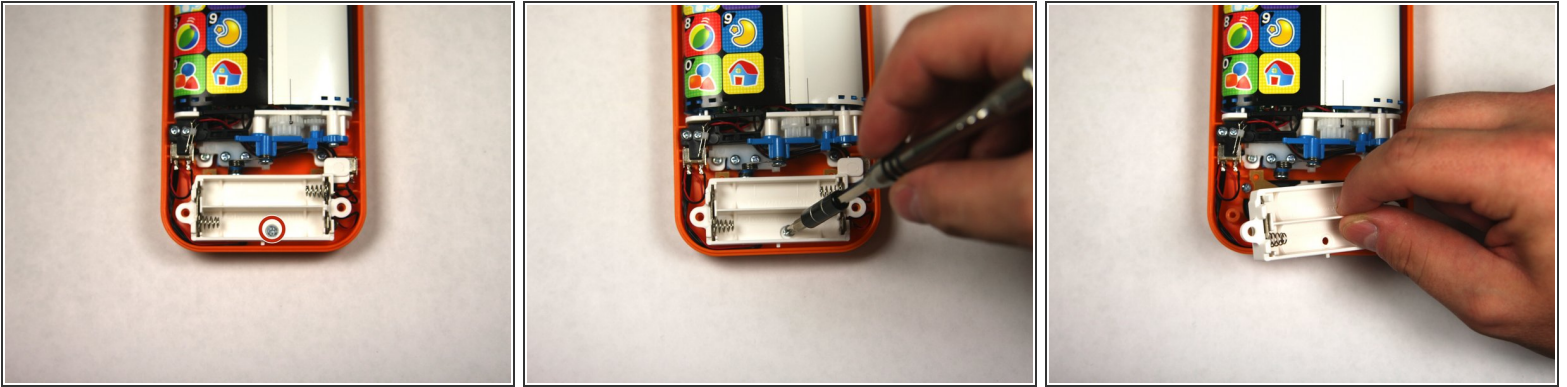
- ☑ When reassembling, align the notch on the battery panel with the slot on the phone.

### Step 4 — Repairing VTech Touch and Swipe Baby Phone Screen Alignment



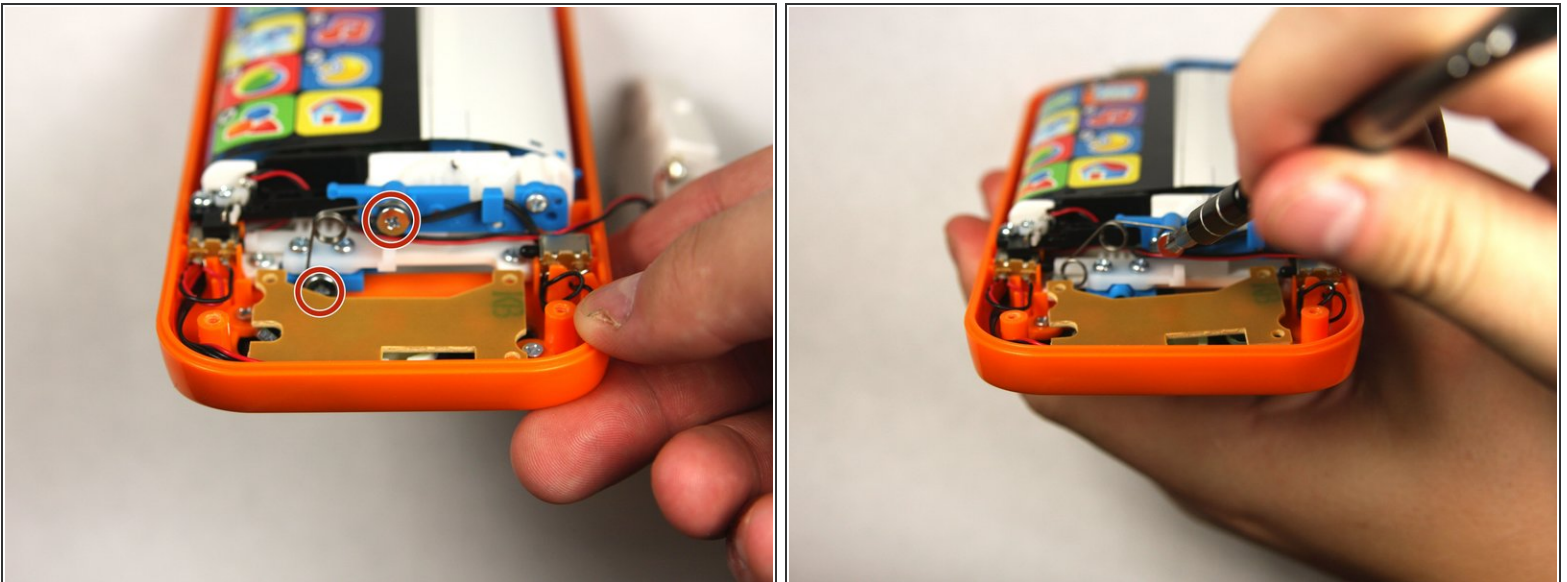
- Remove four 13.8mm screws from the back of the device using a Phillips #1 screwdriver.

## Step 5



- Remove a single 4.8 mm screw with a Phillips #0 screwdriver and lift away the battery pack being careful of the wires.

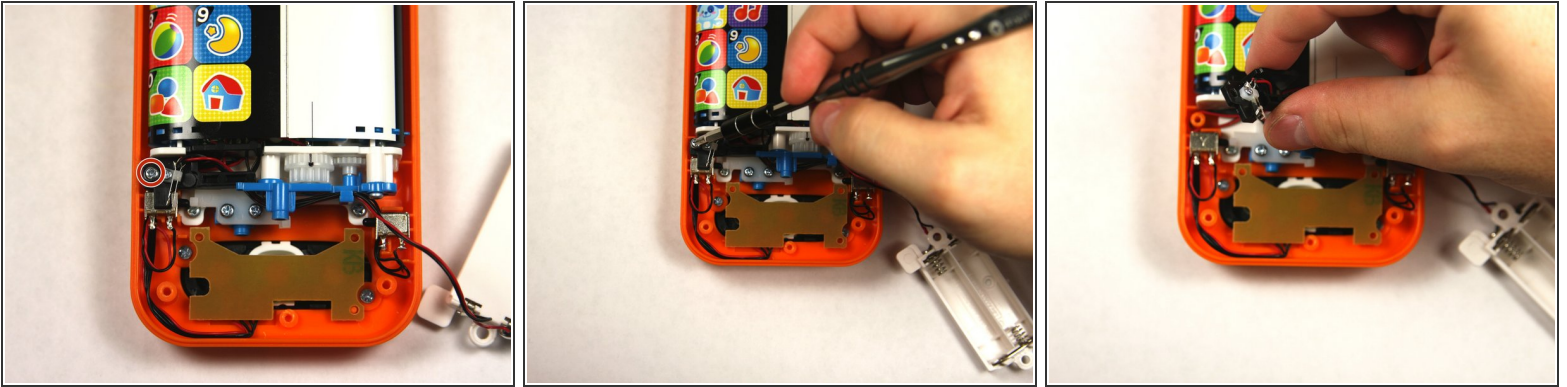
## Step 6



- Remove two 7.2 mm screws with a Phillips #0 screwdriver.
- Slide off the spring.

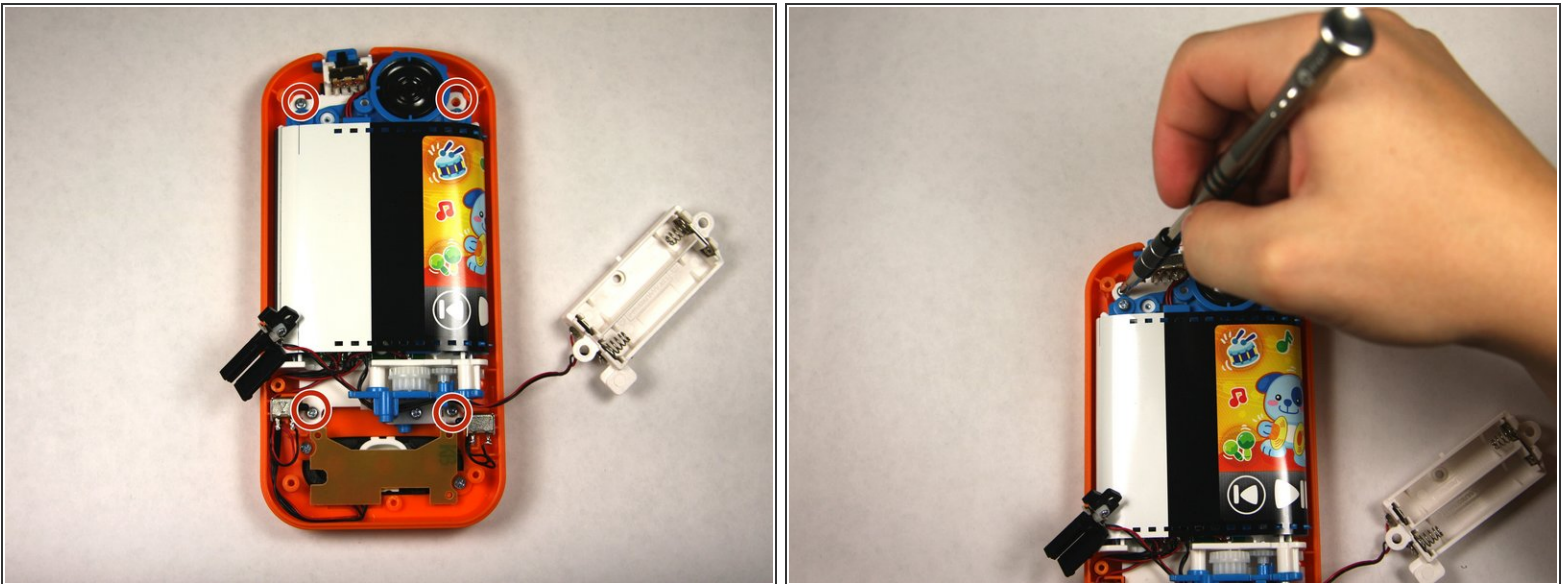


## Step 7



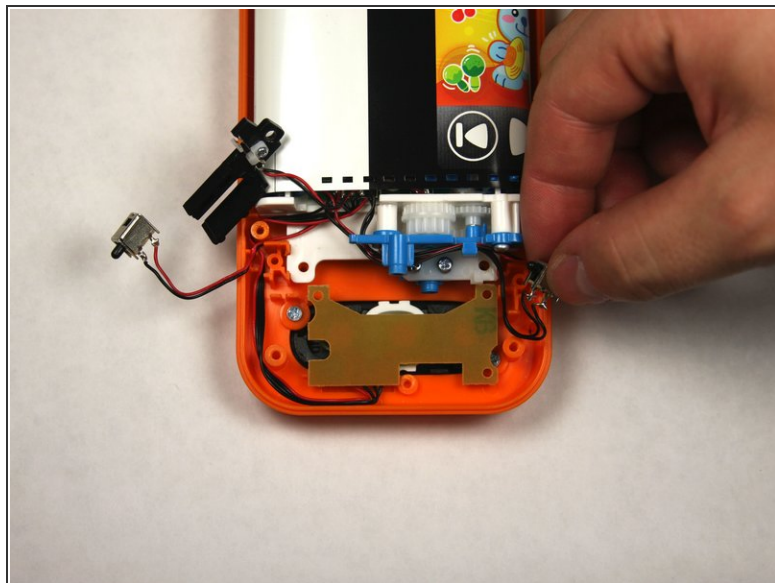
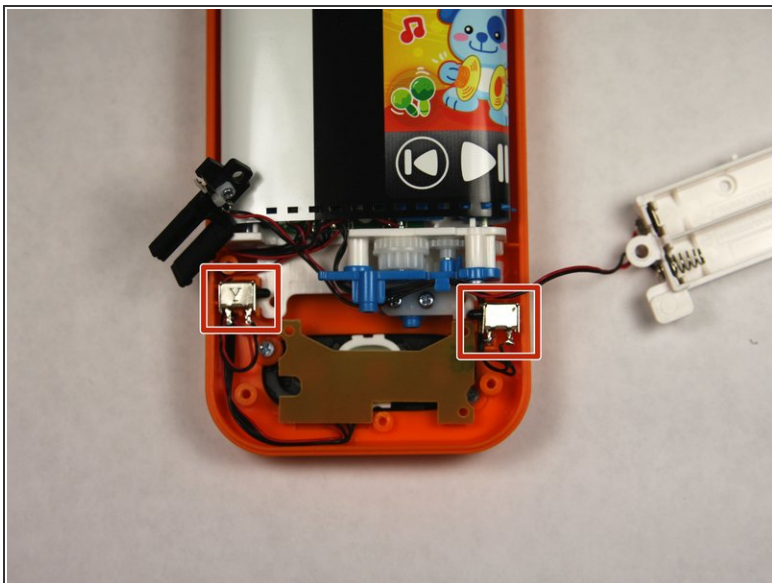
- Remove the single 7.5mm screw with a Phillips #0 screwdriver.
- Lift up the black plastic piece.

## Step 8



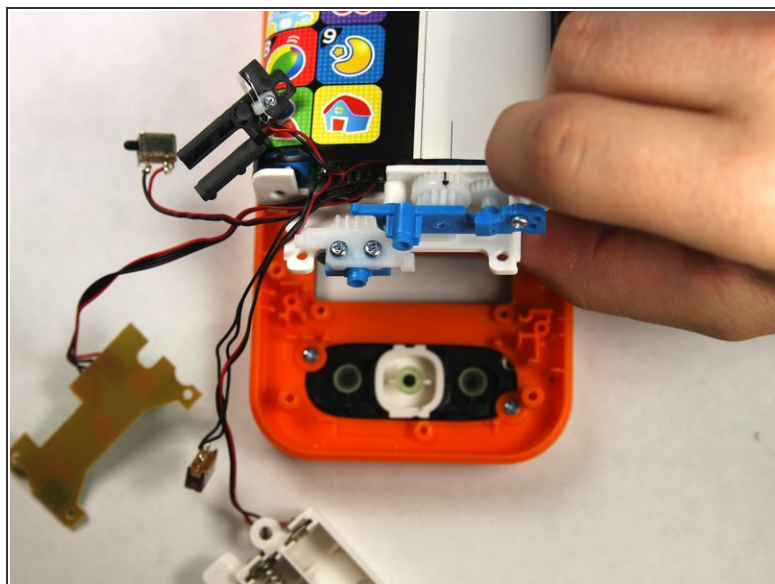
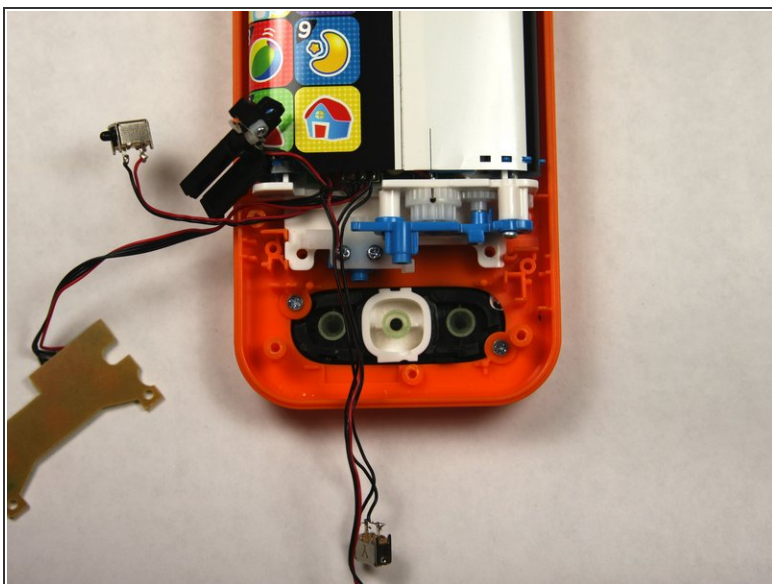
- Remove four 7.5mm screws with a Phillips #0 screwdriver.

## Step 9



- Remove the two buttons, noting how wires are placed for reassembly.

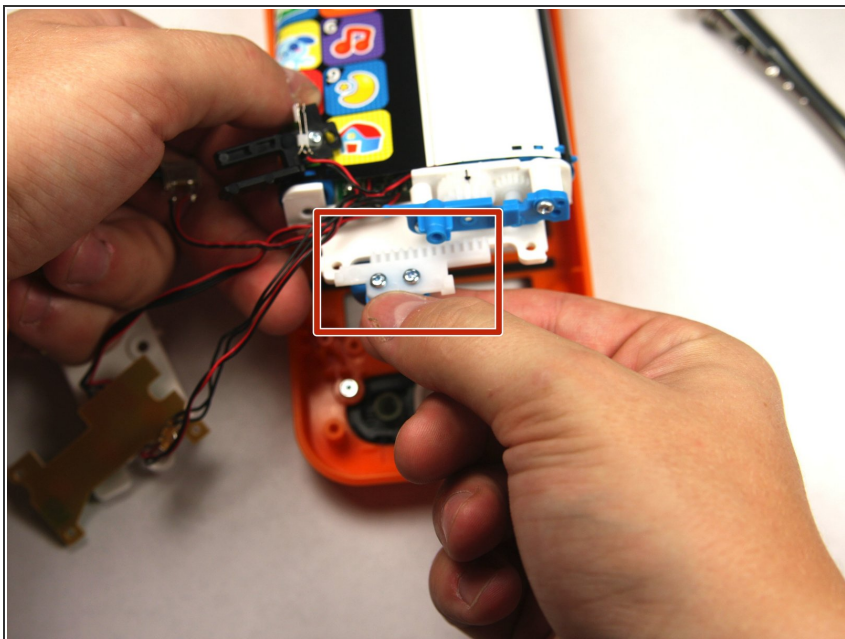
## Step 10



- Lift the button board up and away to clear room for lifting the motherboard.
- Tilt the assembly up but being wary that it is still attached to the front panel.

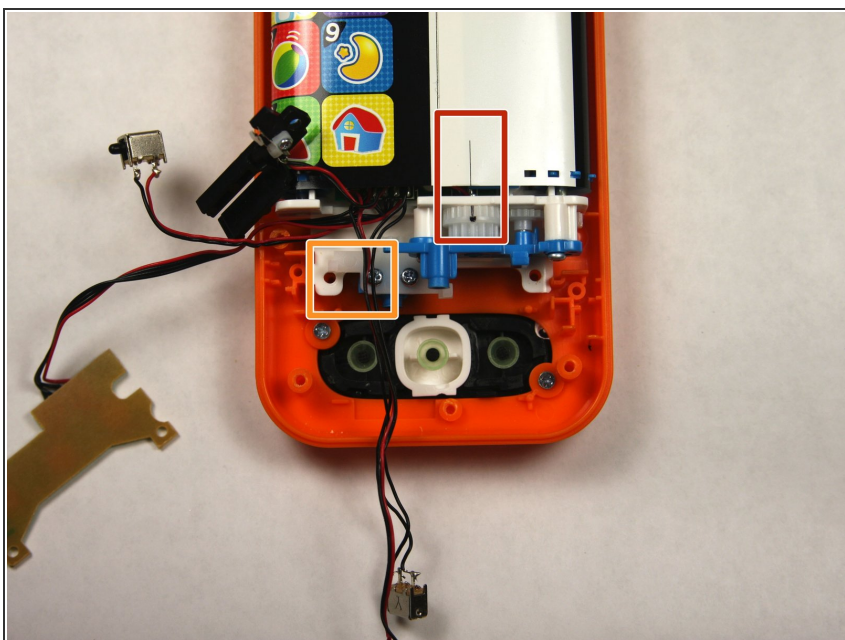


## Step 11



- Slide the toothed slider towards you to remove.

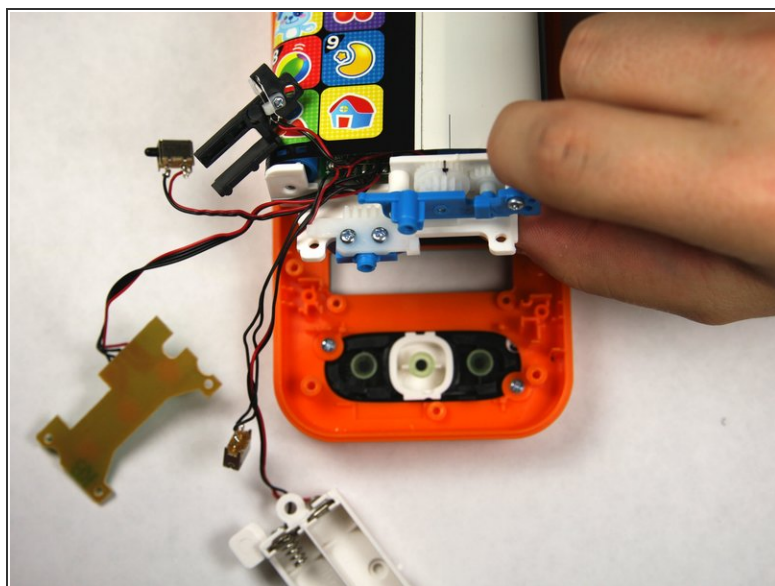
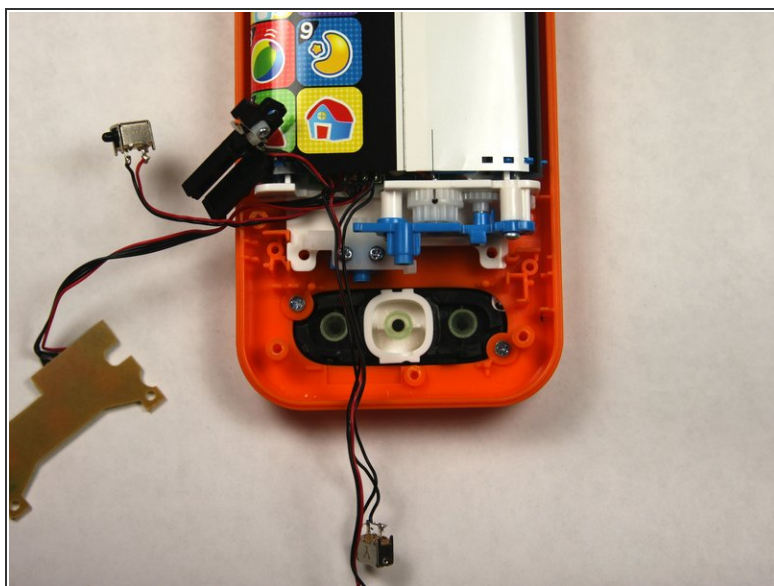
## Step 12



- To reassemble, align the two black lines together by moving the belt back and forth.
- Once aligned reinsert the toothed slider at the exact point shown.

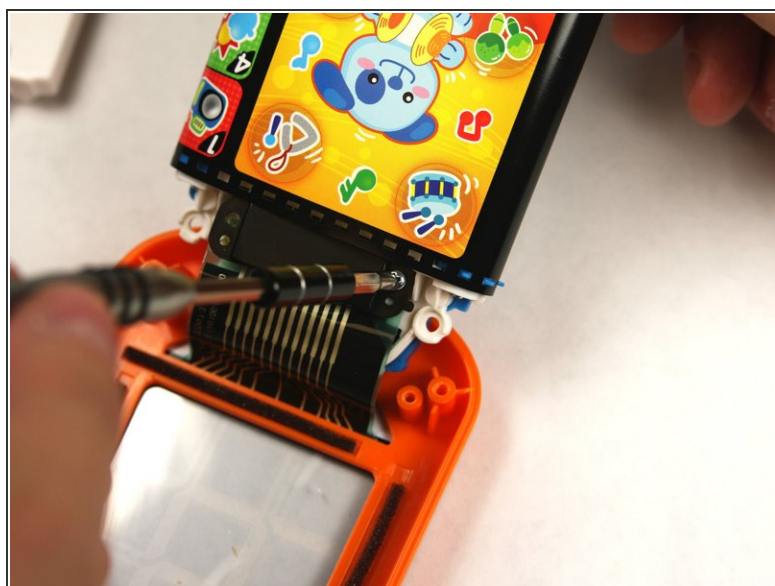


## Step 13 — VTech Touch and Swipe Baby Phone Touchscreen Contact Cleaning



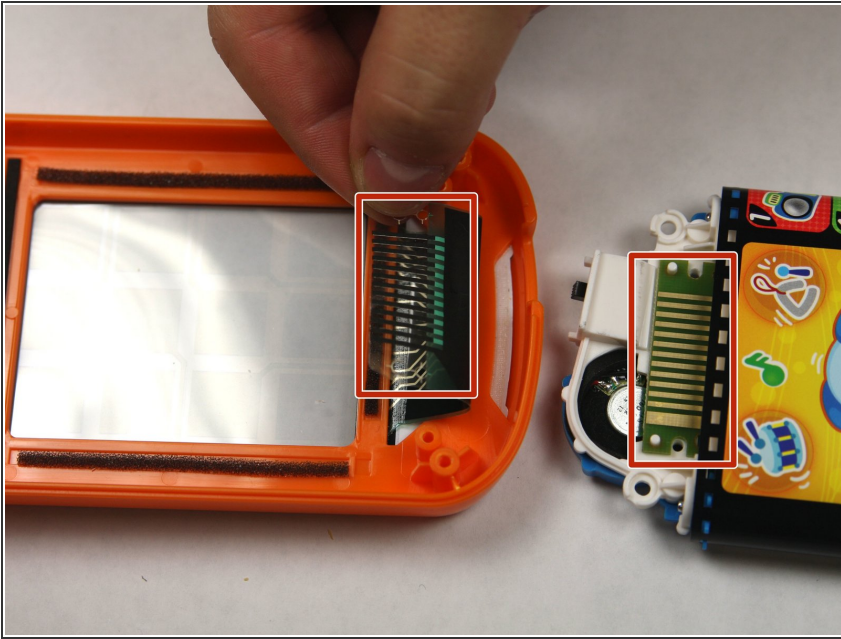
- Lift the assembly to gain access to the connection point under the assembly.

## Step 14



- Remove the two 7.5 mm screws with a Phillips #0 screwdriver.

## Step 15



- With the connector removed, clean both of the boxed sections with rubbing alcohol on a cotton swab. Allow a minute for the alcohol to dry before reassembling.

To reassemble your device, follow these instructions in reverse order.