



Xiaomi Mi Note Screen Replacement

This guide will show you how to replace the screen on your Xiaomi Mi Note

Written By: Mark Sears



INTRODUCTION

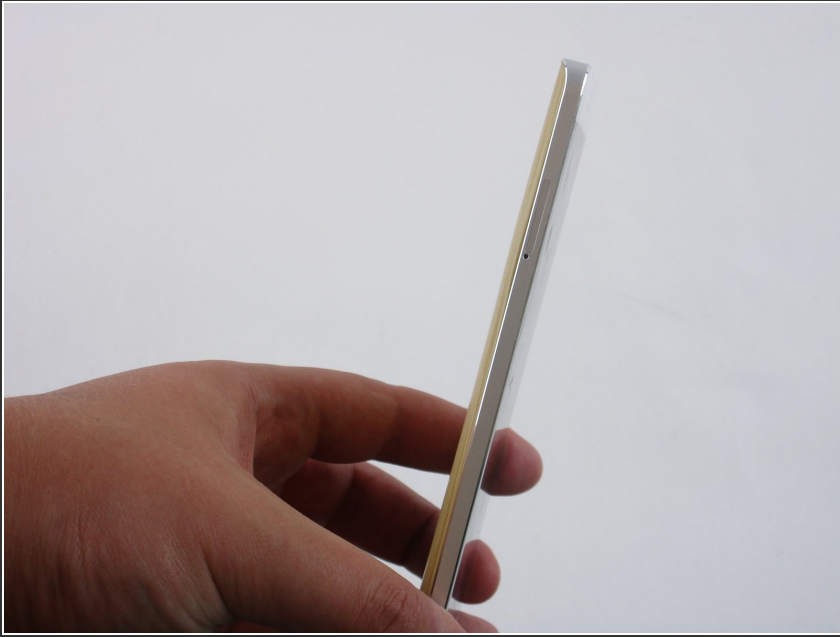
Use this guide to replace your Xiaomi Mi Note's screen display.



TOOLS:

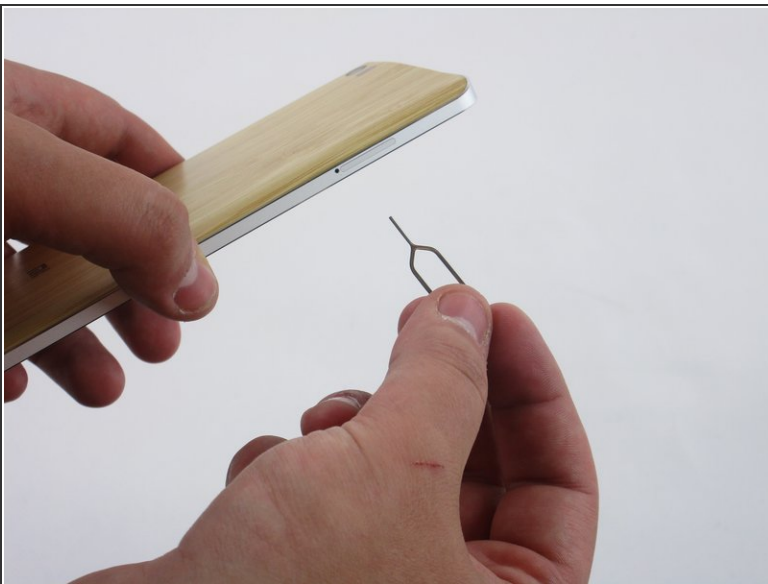
- [Metal Spudger](#) (1)
 - [Suction Handle](#) (1)
 - [SIM Card Eject Tool](#) (1)
 - [Phillips #000 Screwdriver](#) (1)
 - [Spudger](#) (1)
-

Step 1 — Dual SIM SD Card



- Locate the hole for the Dual SIM SD card on the left side of the phone.

Step 2



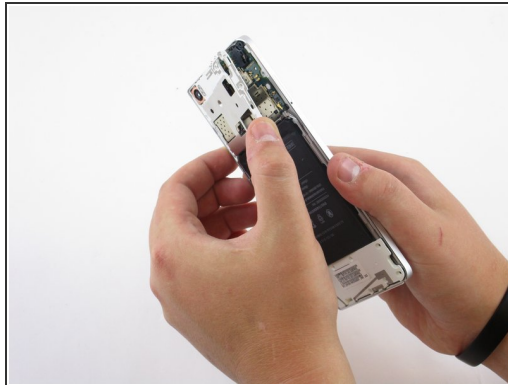
- Use the Dual SIM SD card removal tool (or use a paper clip) and insert it into the slot hole until the tray pops out.

Step 3 — Battery



- Use your suction cup to grip the back of the phone. Once the suction cup is secure, pull back with moderate force and the back plate should snap free.

Step 4



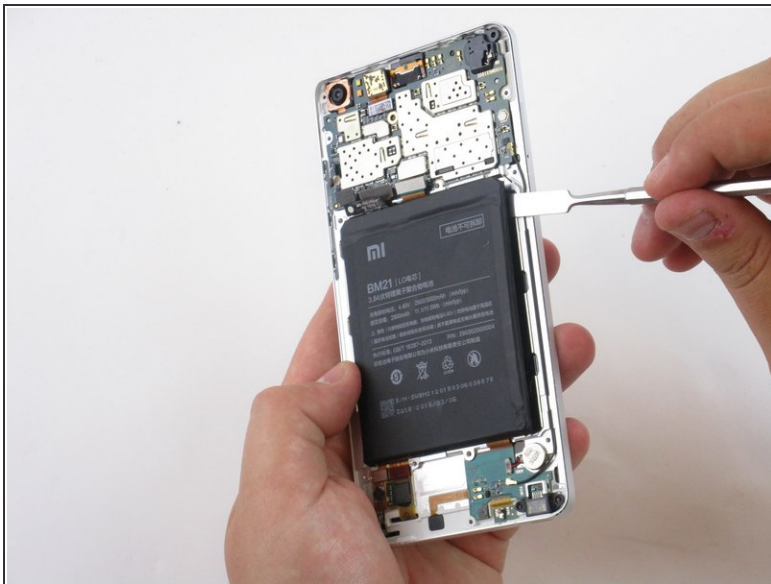
- Once the back plate is off you will need to detach the frames that hold in the battery. Locate and remove the screws (Screws are marked in the image). You can then pull the frame off with ease once the screws have been removed.
- Remove the six 3.5mm Phillips #000 black screws using a securing part of the back panels.
- Remove the seven 2.5mm Phillips #000 black screws securing part of the back panels.
- Remove the five 2mm Phillips #000 silver screws securing the remaining back panels.

Step 5



- Use a nylon spudger to pry upwards to detach the ribbon that's connecting the battery to the motherboard.

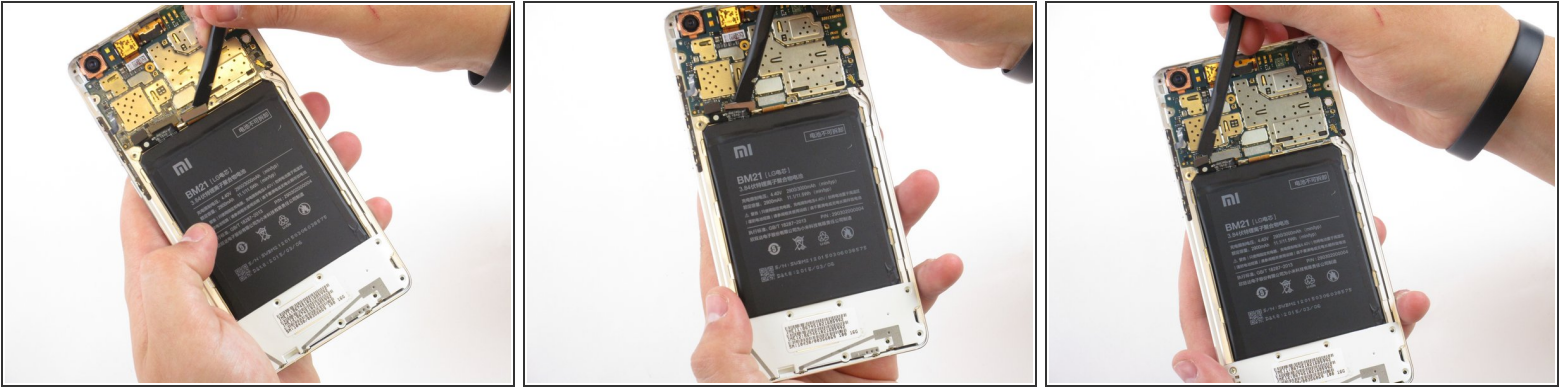
Step 6



- Insert a nylon or metal spudger underneath the battery at any point. Then slide the spudger around all the edges to loosen it. The battery can now be easily lifted out of the frame.

 Glue will be holding down the backside of the battery.

Step 7 — Screen



- Use a spudger to detach the ribbons connected to the motherboard using an upward prying motion.

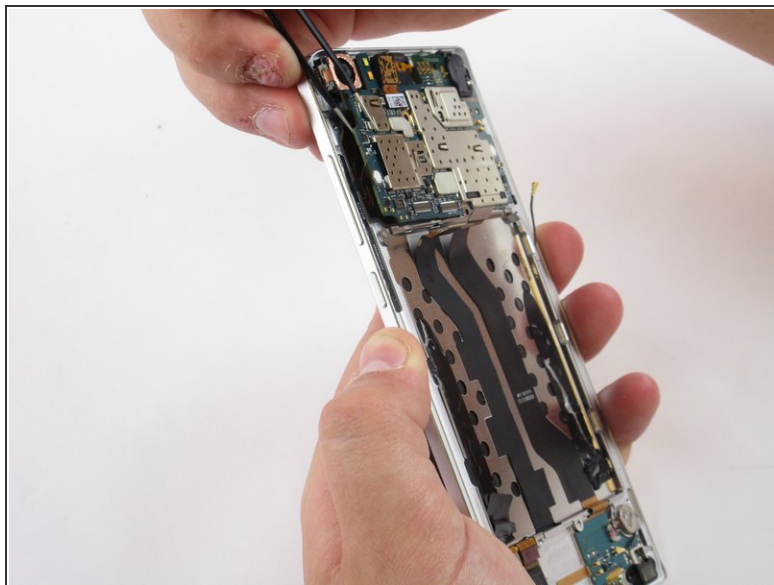
Step 8



- Use tweezers to detach the small ribbon on left side located near the volume buttons using an upwards prying motion.
- You will also need to detach the microphone cord located on the right side along the frame using an upwards prying motion as well.

 When detaching the ribbon on the left use minimal force to prevent damage.

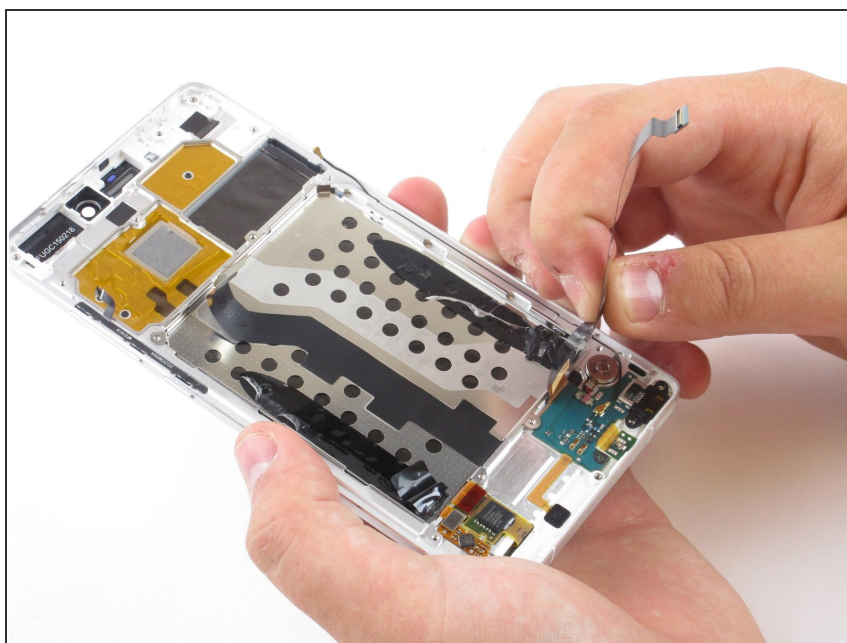
Step 9



- Use a tweezer to lift and remove the motherboard from the frame.

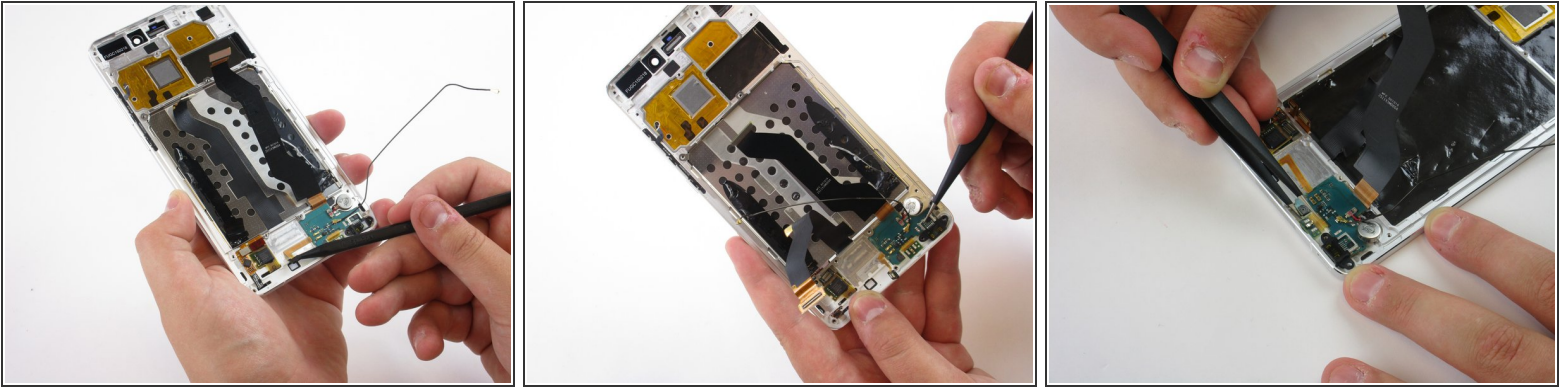
☑ Be sure that the Dual SIM card and tray has been removed.


Step 10



- Peel back the ribbon that is adhered to the metal surface as shown.

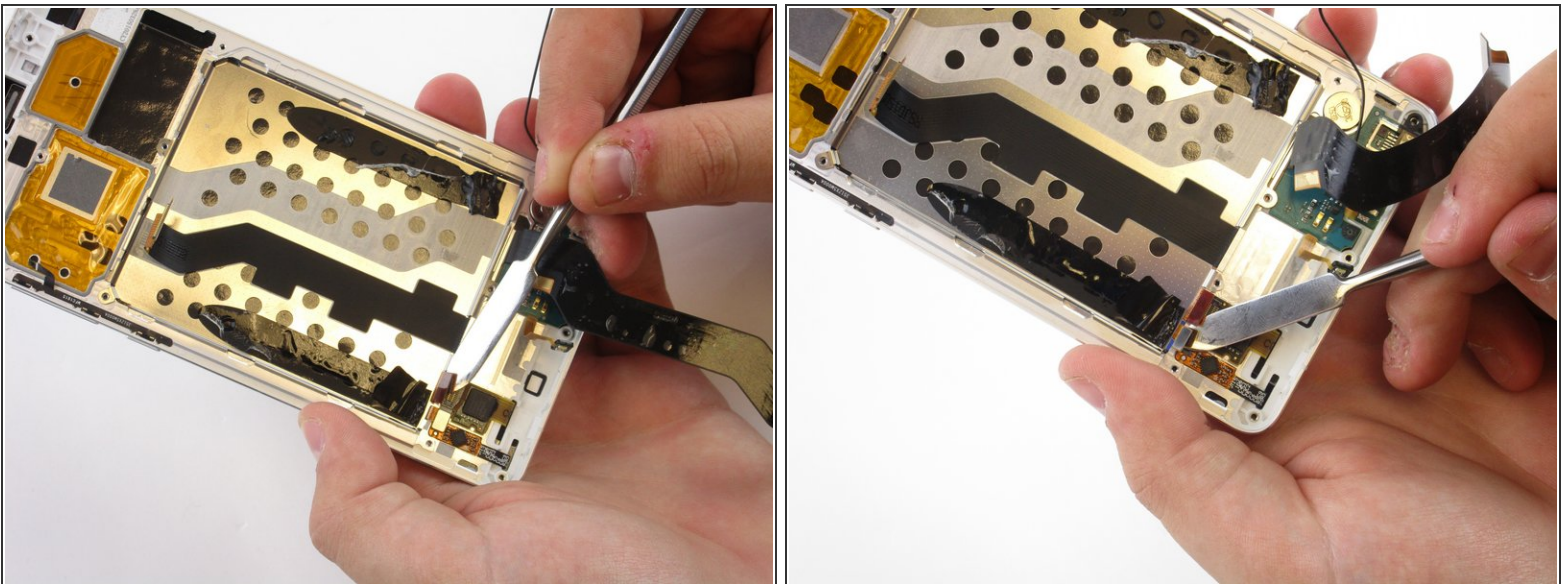
Step 11



 The dock connector is firmly adhered to the frame below it. To prevent damage to the phone use minimal force when removing.

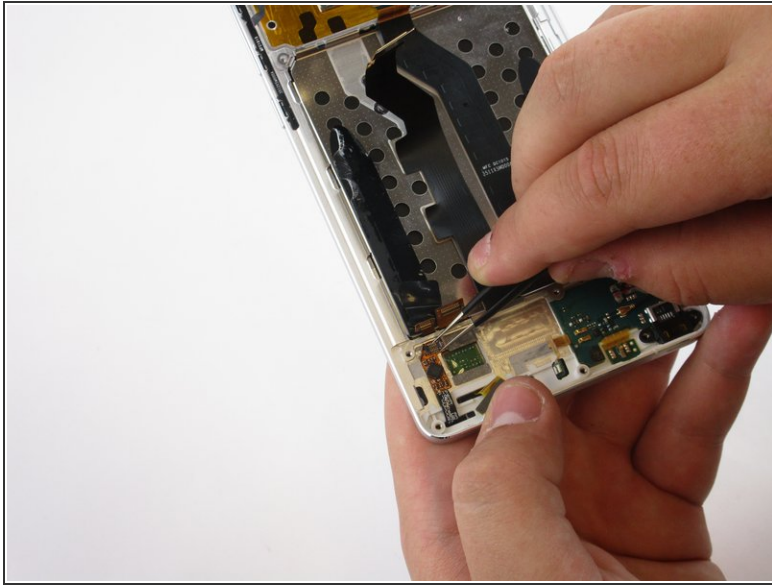
- Using tweezers slowly start prying upwards at the locations shown in the images. After carefully prying around the edges of the dock connector, it can now be lifted upwards out of the frame.

Step 12



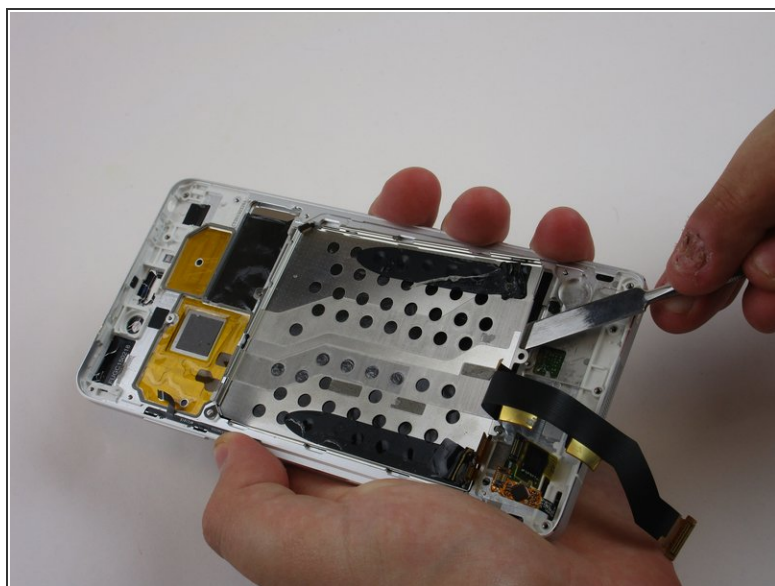
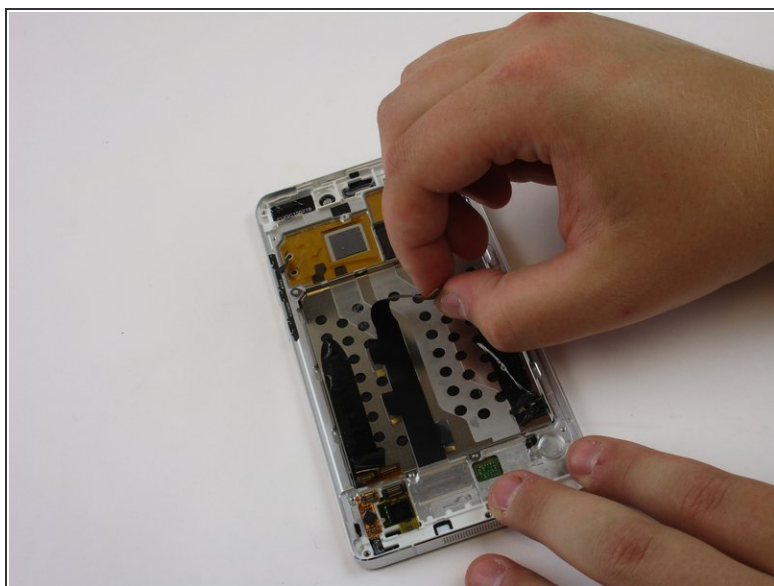
- Using a spudger detach the top two ribbons that connect the screen to the touch sensor and motherboard using an upwards prying motion.

Step 13



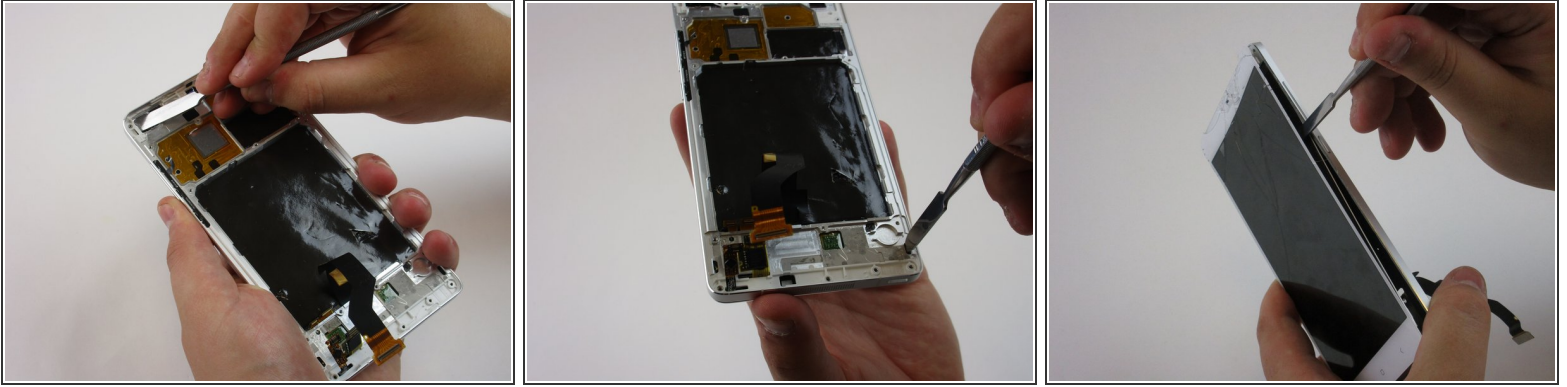
- Using tweezers lift the two remaining ribbons from the bottom frame by grasping the ribbons at any point and lifting towards the bottom of the frame.
- ⓘ The ribbons should now be able to freely slide through the respective slits once the screen is loose enough to pull away from the frame for later.

Step 14




- Peel back the ribbon attached to the back metal frame.
 - Use your spudger at any point to get underneath the metal frame. Slide the spudger around the sides of the metal to free it from the frame.
- i** Small amounts of adhesive are holding the metal frame in place.

Step 15



- Apply considerable force to the back corners using your spudger to help relieve it of the adhesive as shown.
- Once you have freed the screen from a portion of the adhesive, wedge your spudger around the front edge to work around the edges of the screen and frame in order to fully remove it from the frame.

 Be aware that the glass screen will break during this process. Be careful not to cut yourself while performing this step.

To reassemble your device, follow these instructions in reverse order.