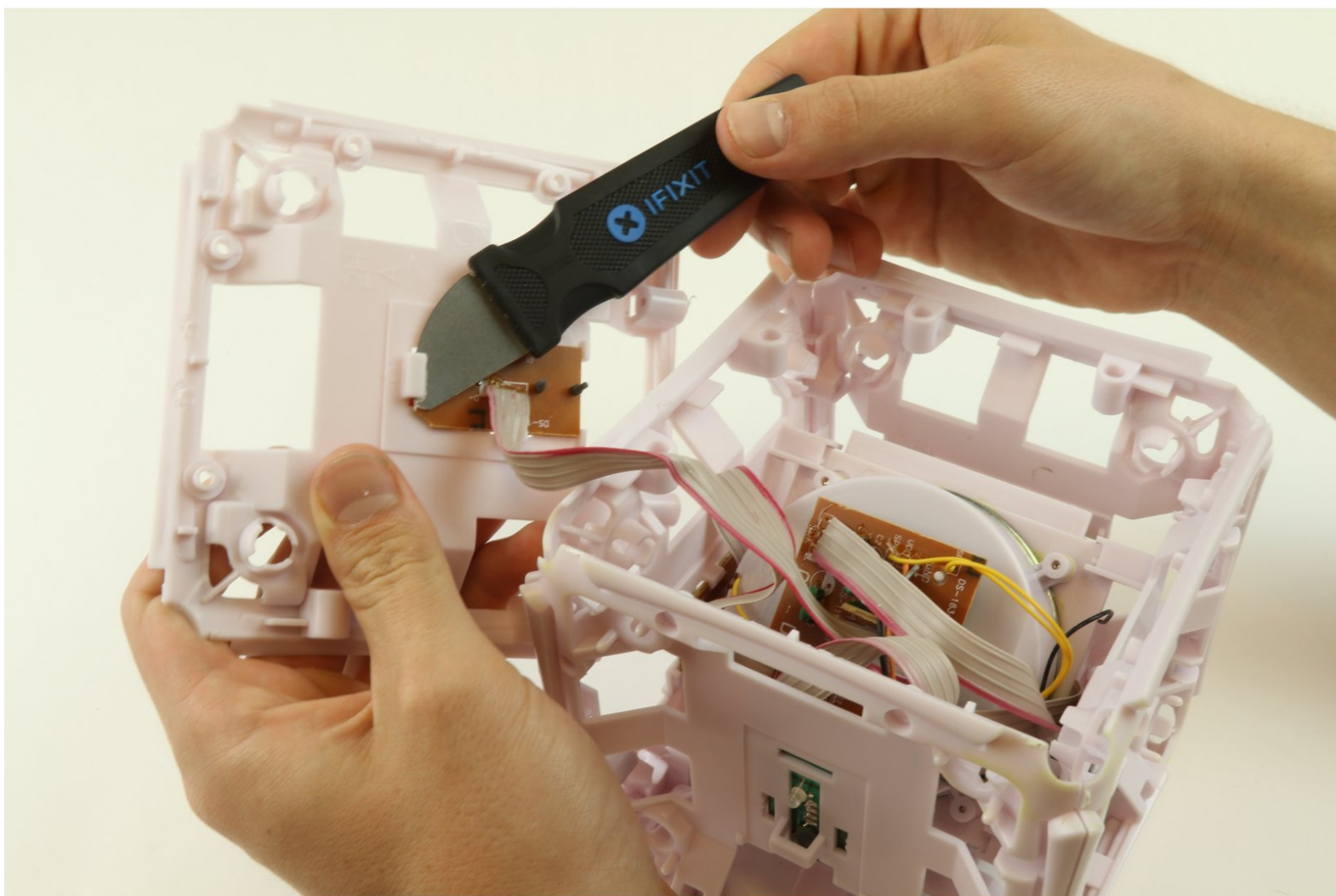




Munchkin Mozart Magic Cube Sound Button Replacement

This guide will teach you how to replace the sound button in your Munchkin Mozart Magic Cube.

Written By: Nikolas Soulandros



INTRODUCTION

The sound buttons are located on the face of your cube underneath the colored instrument pictures.



TOOLS:

- [Jimmy](#) (1)
 - [Metal Spudger Set](#) (1)
 - [Phillips #2 Screwdriver](#) (1)
 - [iFixit Opening Tools](#) (1)
-

Step 1 — Face plate



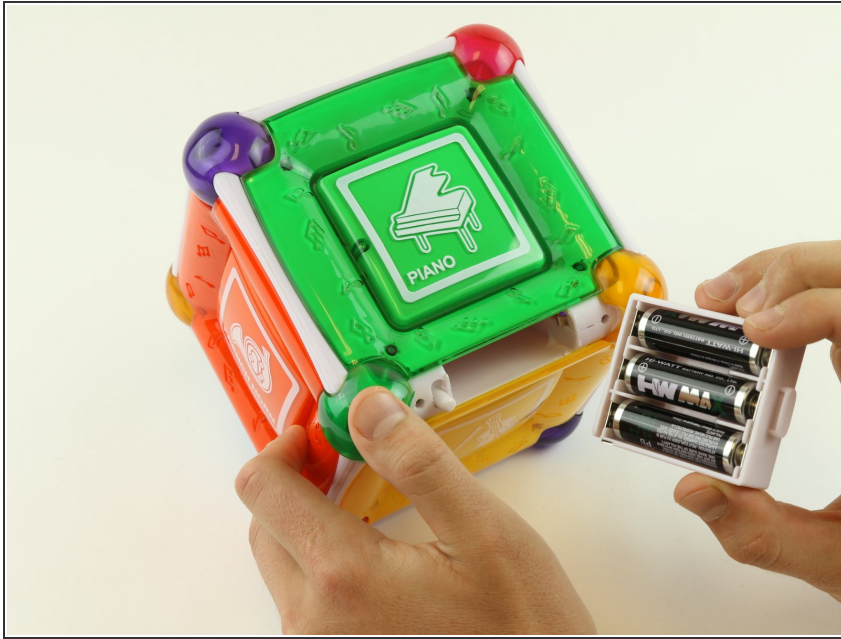
- Remove two 6 mm Phillips #2 screws on either side of the On/Off Plate.

Step 2



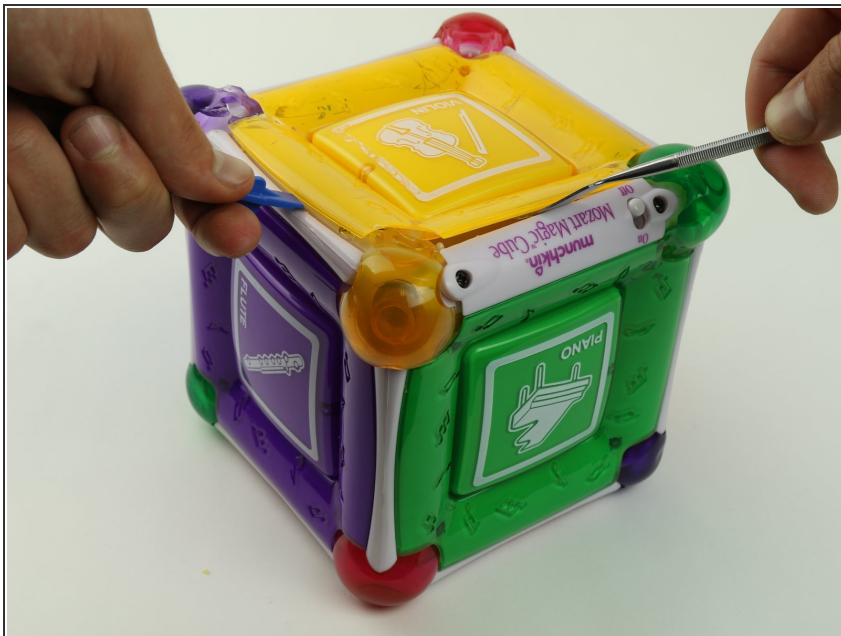
- Remove the On/Off switch plate and save the screws so you can use them later to put the plate back on.

Step 3



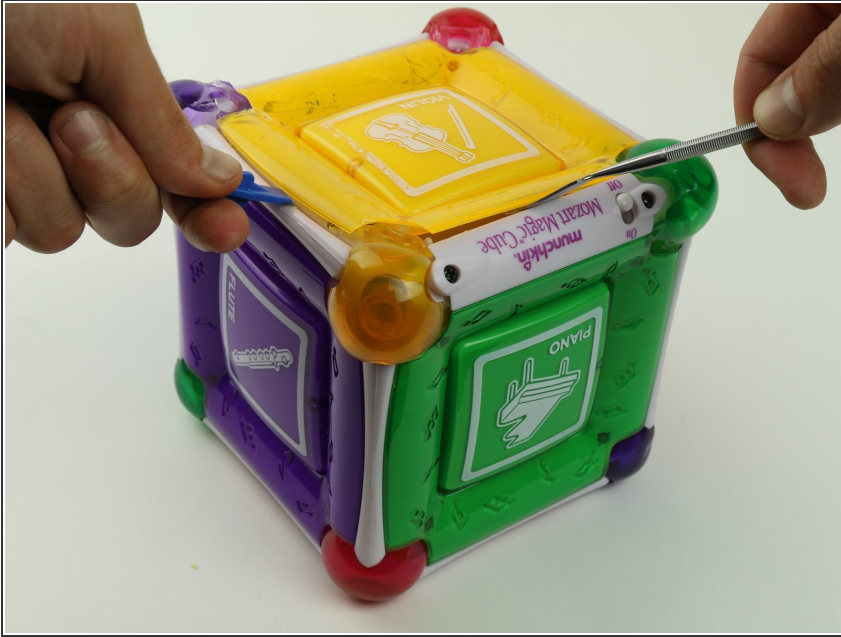
- Gently pull out the battery cartridge and if needed, replace the batteries with 3 AA alkaline batteries.

Step 4



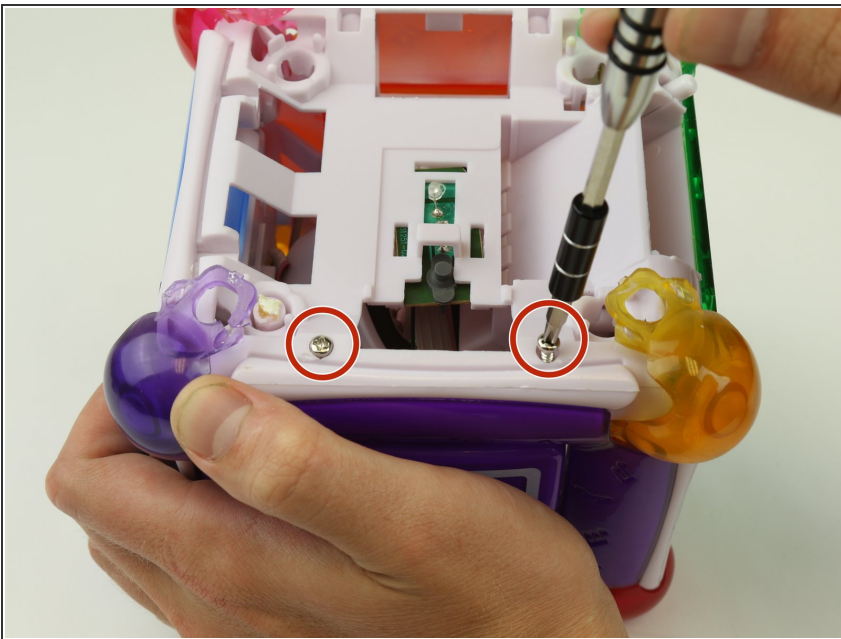
- Starting with the yellow face, insert the metal spudger between the yellow face and the white frame, prying the frame apart.

Step 5



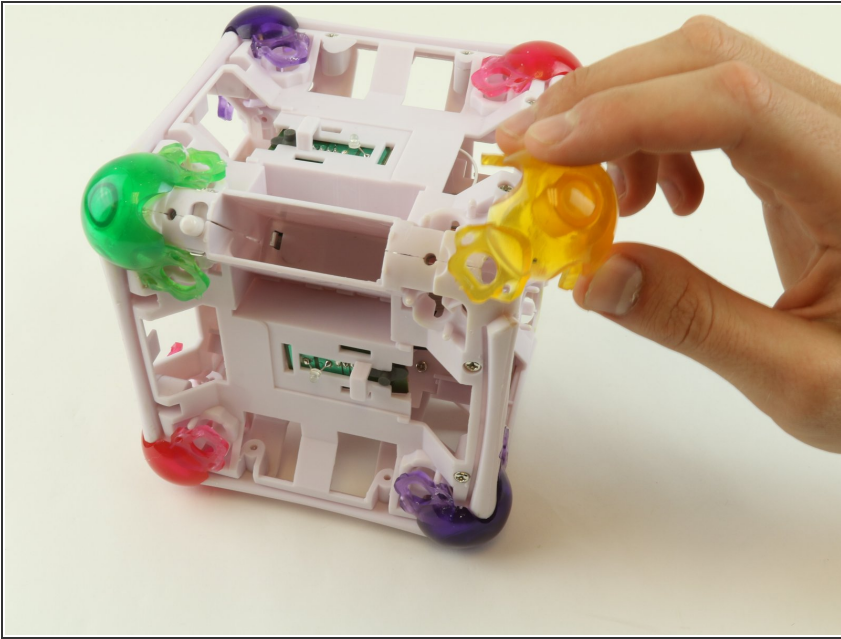
- Insert the metal spudger in the space created by the plastic opening tool between the frame and face of the cube.
- Pry the cube face from the frame.

Step 6



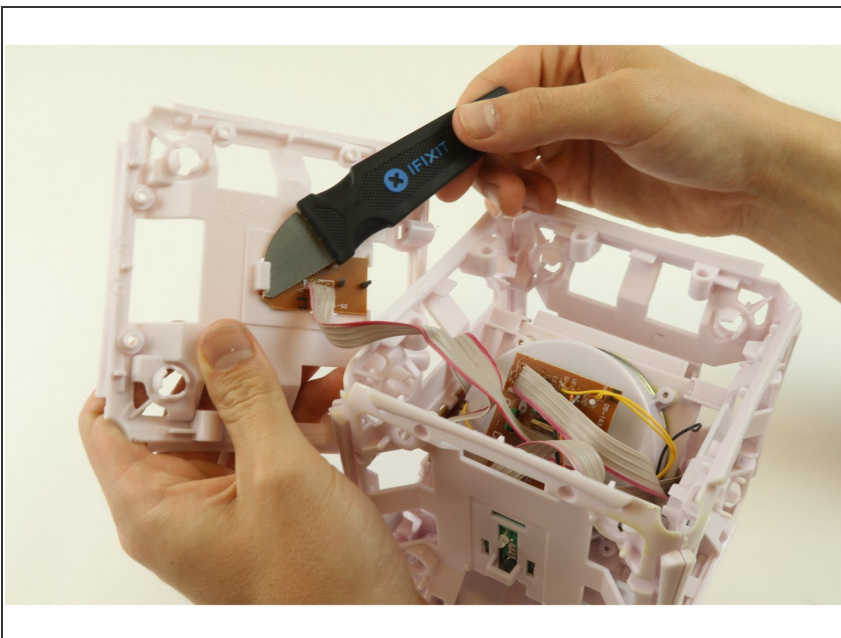
- After removing the square plates, you can unscrew the screws underneath.
- Remove four 6 mm Phillips #2 screws, located on the sides.

Step 7



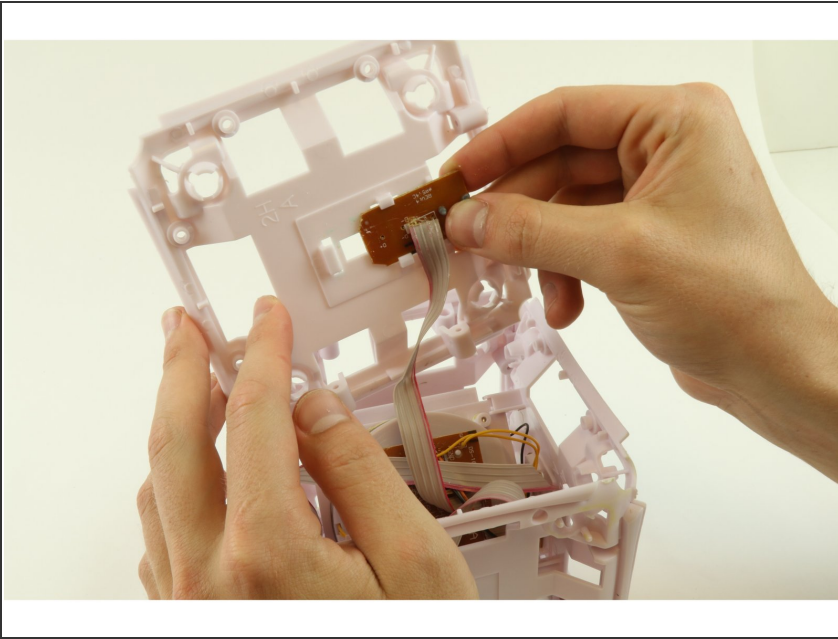
- Remove the rubber corners by simply pulling them off.

Step 8 — Sound Button



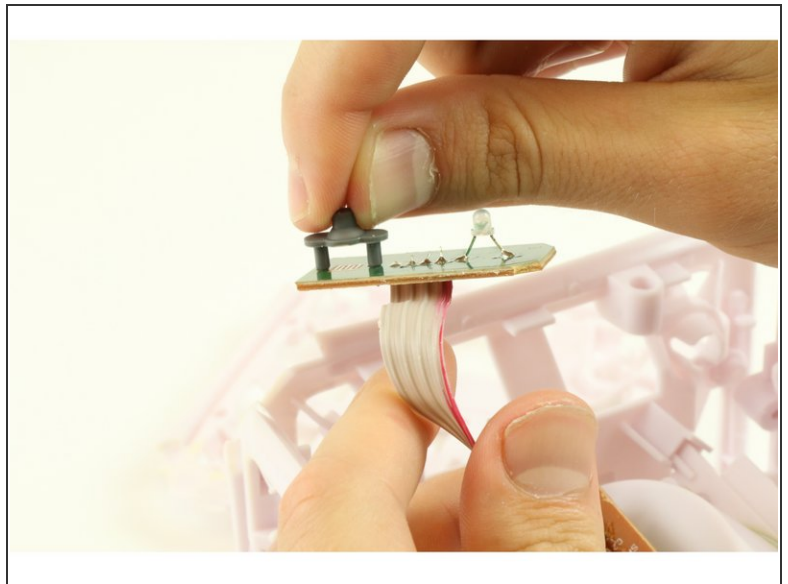
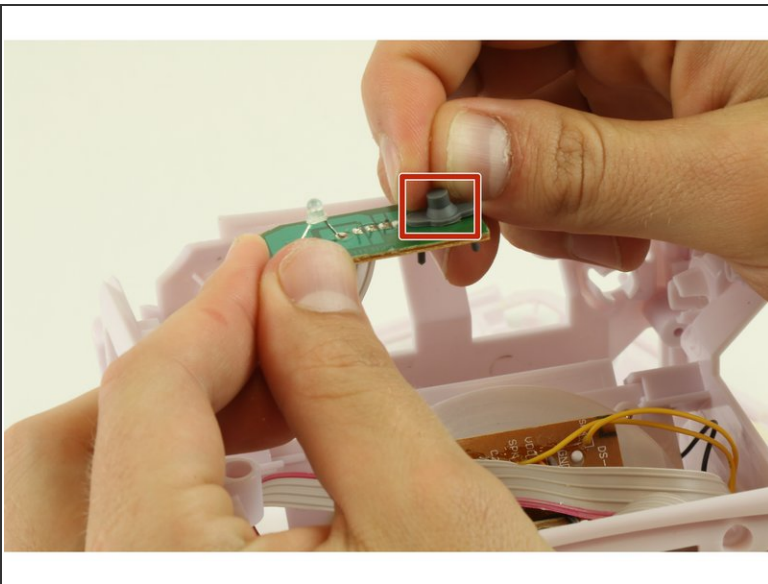
- Flip the frame over so that green motherboard over so that the LED is face down and the brown side of the motherboard is face up using the Jimmy to remove the glue connecting the motherboard to the white frame.

Step 9



- Slide the motherboard out of the frame.

Step 10



- To remove the button use your fingers or forceps to remove the gray rubber button piece on the green side of the motherboard.

To reassemble your device, follow these instructions in reverse order.

This document was generated on 2020-11-28 05:10:48 AM (MST).

