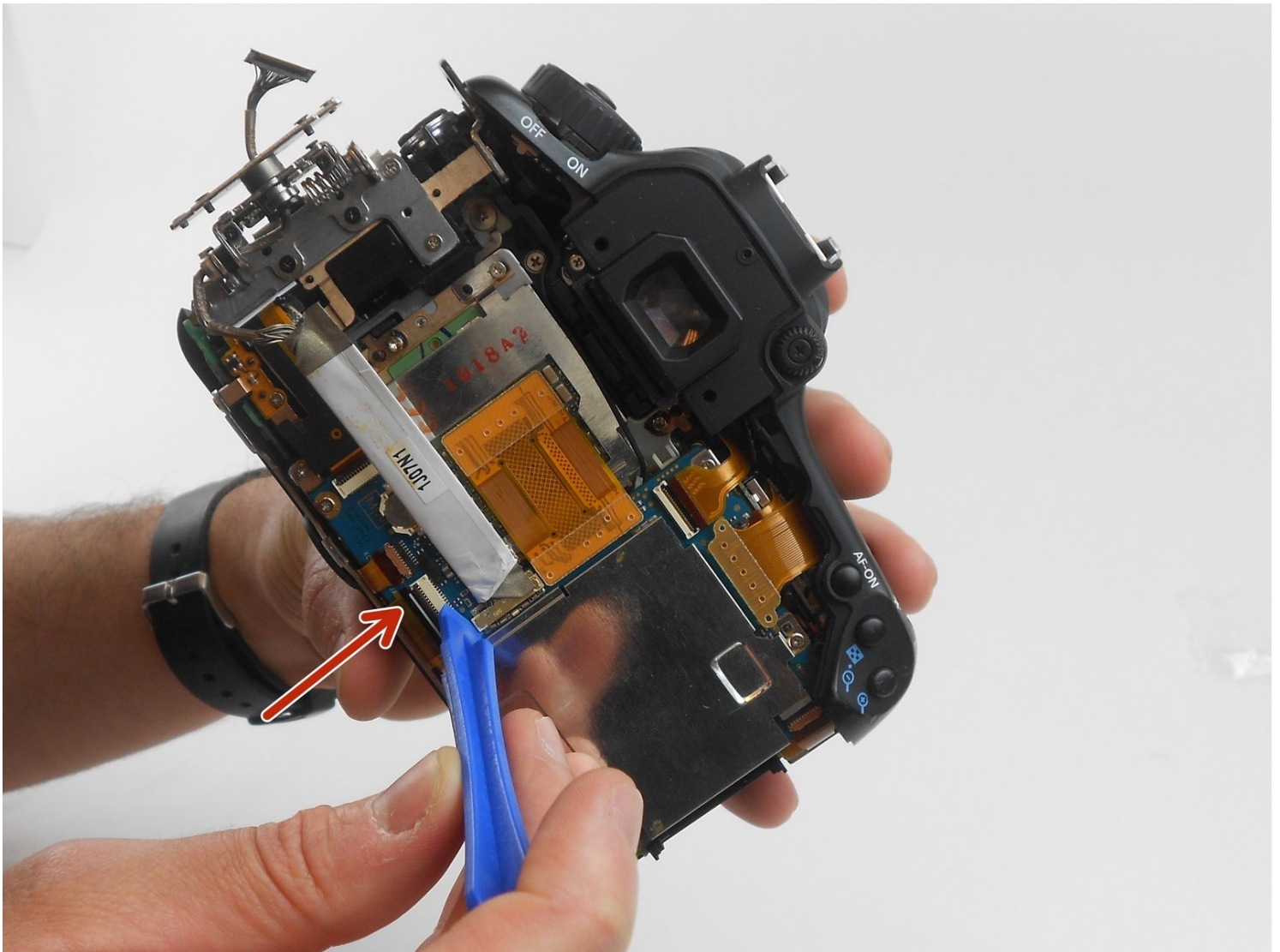




Canon EOS 60D LCD Screen Swivel Assembly Replacement

If the LCD swivel stops turning, or is broken...

Written By: Alejandro Cabrera



INTRODUCTION

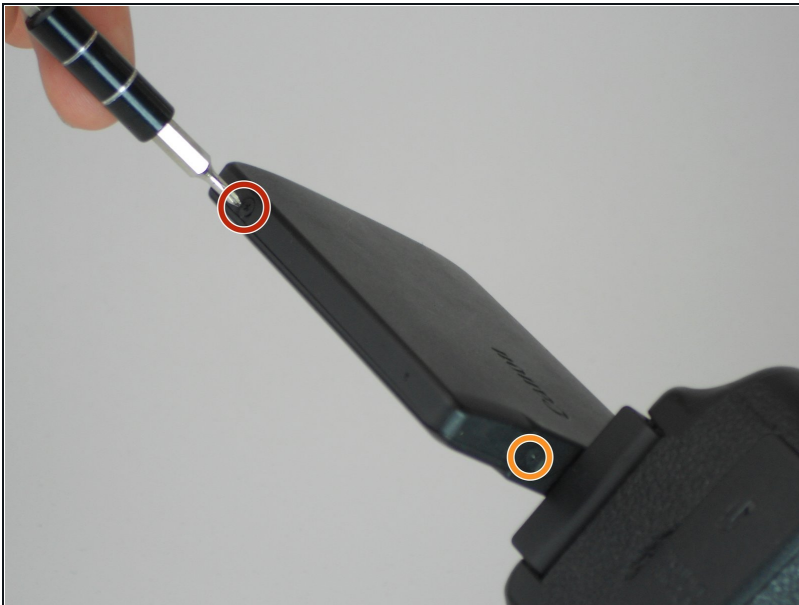
If the LCD swivel stops turning, or is broken by the user, this guide will help you replace it. Special care should be taken when disconnecting the LCD connector from the motherboard.

TOOLS:

[Phillips #00 Screwdriver](#) (1)

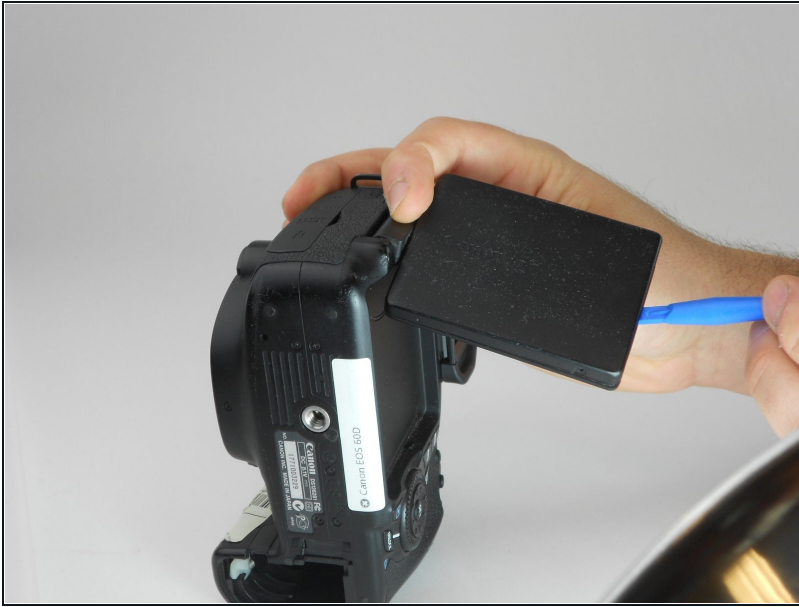
[iFixit Opening Tool](#) (1)

Step 1 — Rear LCD Screen Dissassembly



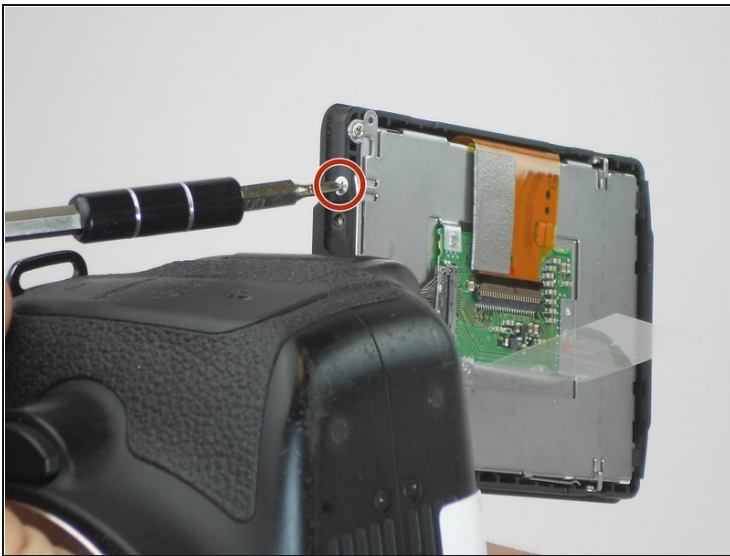
- Take the LCD out of its place to expose the Phillips #PH00 screws.
- Remove the two 2.5 mm Phillips #PH00 black screws on both sides of the LCD screen.
- Next remove the two 3 mm Phillips #PH00 black screws near both sides of the base where the screen swivels.

Step 2



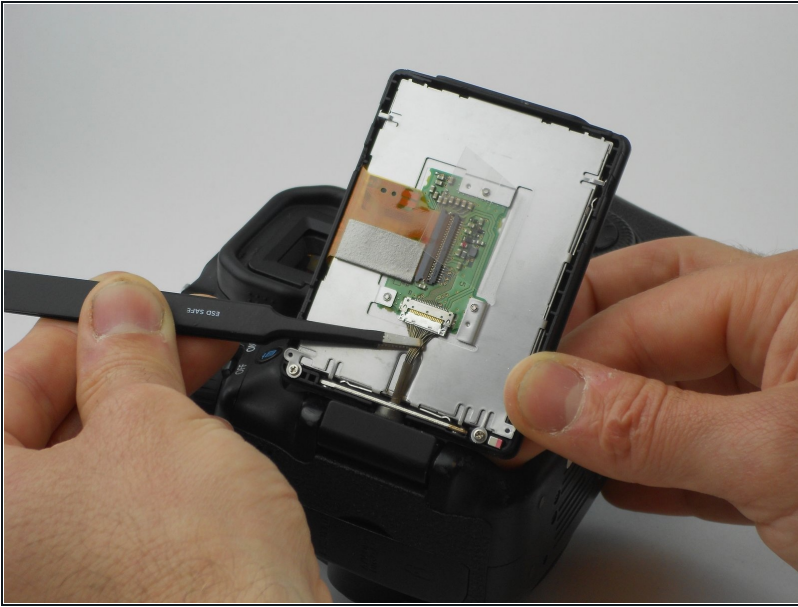
- Using a plastic opening tool, carefully pry off the back cover of the LCD.

Step 3



- Remove the 3 mm Phillips #PH00 silver screw on the side of the screen.
- Turn the screen to remove the second 3 mm Phillips #PH00 silver screw.

Step 4



- Using the [tweezers](#), carefully disconnect the rear connector by pulling it away from the screen.

Step 5 — Removing Rear Cover



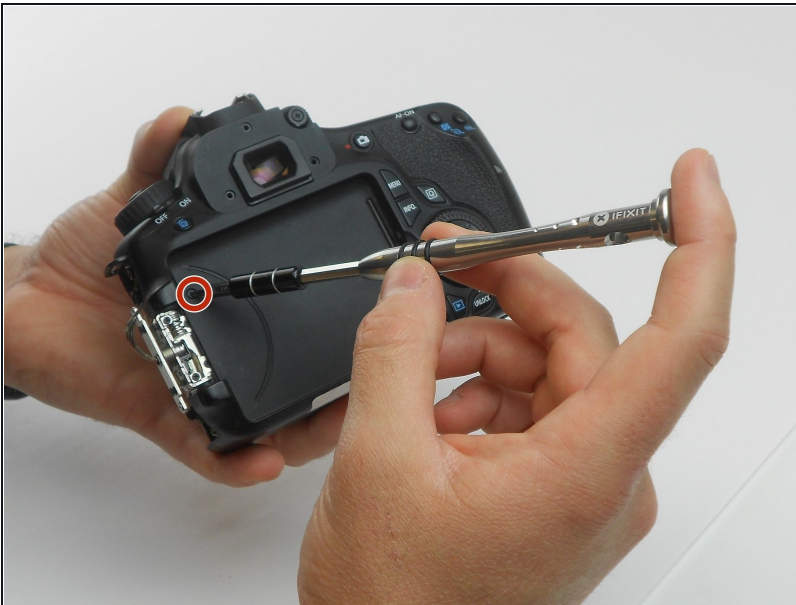
- Now, four 2.2 mm Phillips #PH00 screws holding a cover around the hinge should be visible.
- Turn the swivel around to expose the remaining of the aforementioned screws.
- Then use the PH00 screw driver to remove them.

Step 6



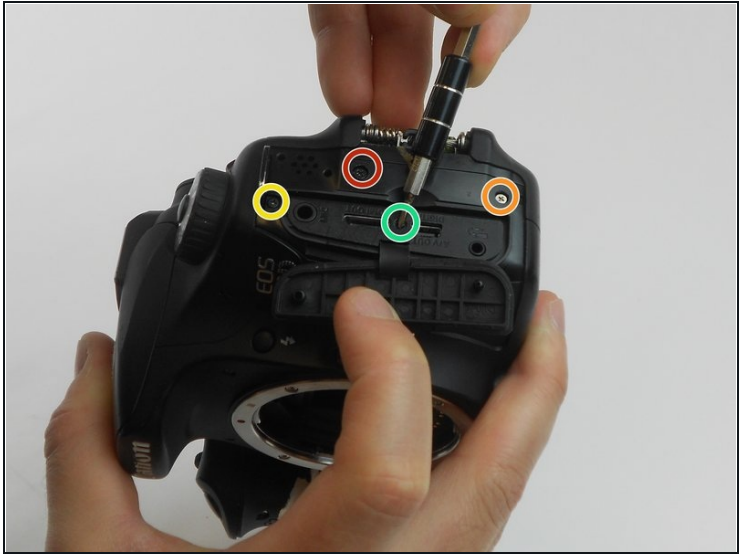
- The eye piece will slide right off with a firm push upwards.
- Remove the 3.4 mm Phillips #PH00 screw using a PH00 screw driver.
- Remove the two 9.9 mm Phillips #PH00 screws using the PH00 screwdriver.

Step 7



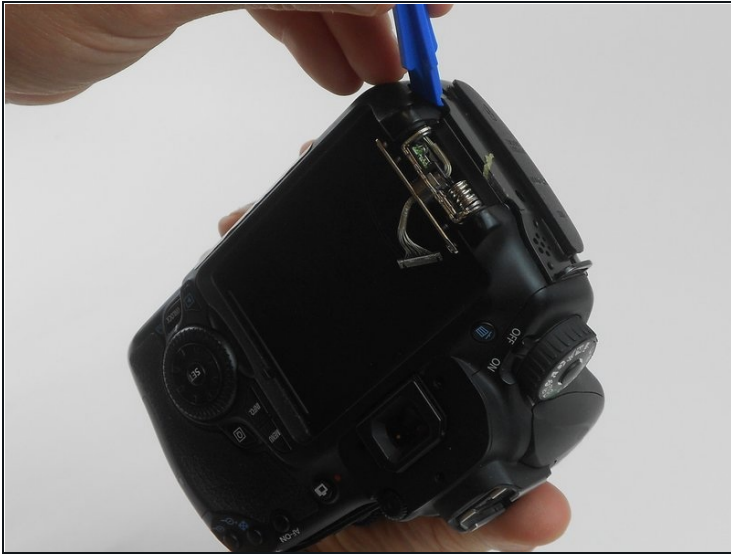
- Using the PH00 screwdriver, remove the 3.8 mm Phillips #PH00 screw located on the back of the camera.

Step 8



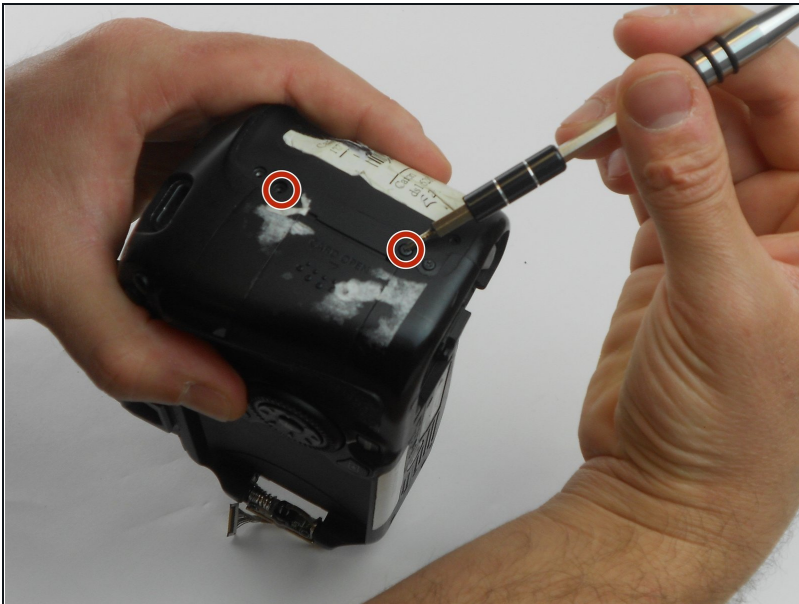
- Using the plastic opening tool, carefully pull up the rubber grip around the port side of the camera.
- Remove the four different sized screws located beneath the rubber grip.
 - 6 mm Phillips #PH00 screw.
 - 3.4 mm Phillips #PH00 screw.
 - 3.9 mm Phillips #PH00 screw.
 - 2.2 mm Phillips #PH00 screw.

Step 9



- Using the plastic opening tool, carefully pry off the the side cover.

Step 10



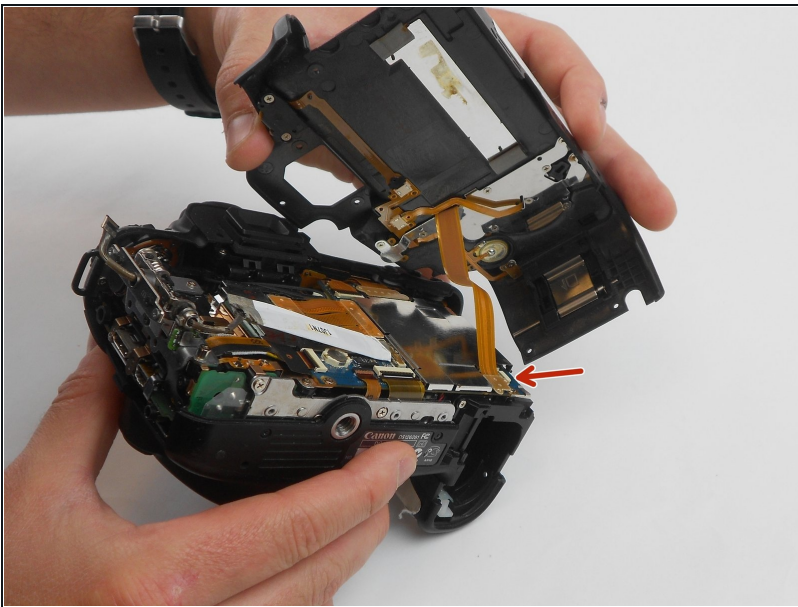
- Remove two 4.8 mm Phillips #PH00 screws from the memory card side of camera using the PH00 screwdriver.

Step 11



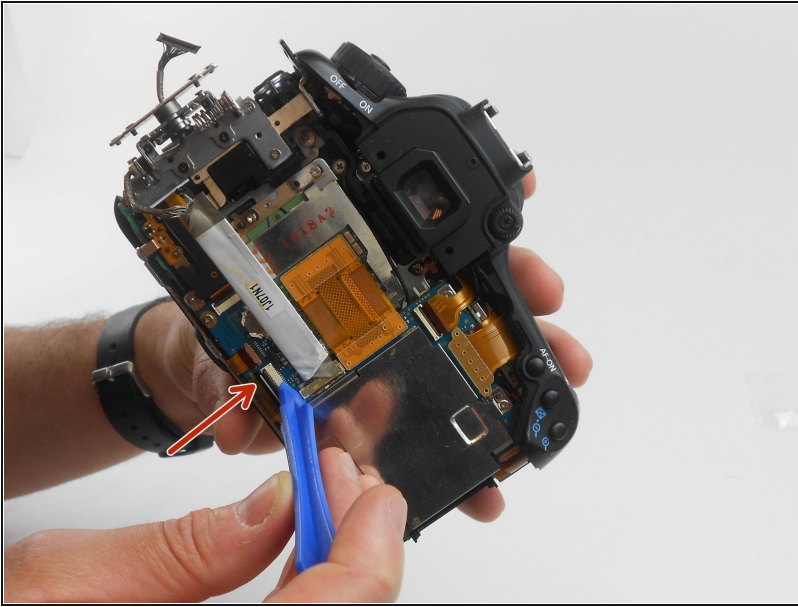
- Look at the bottom of the camera so the serial number tag reads up right.
- Using the PH00 screw driver, remove the top three 3.5 mm Phillips #PH00 screws.

Step 12



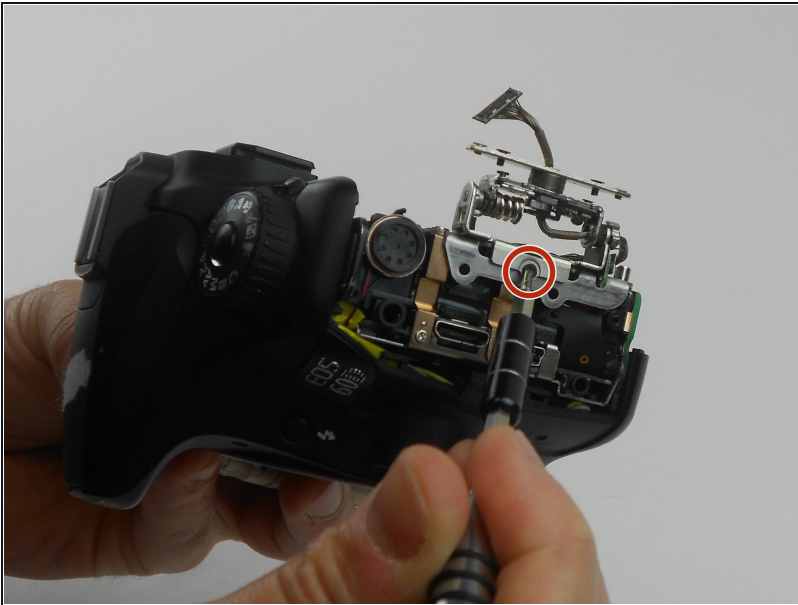
- Now gently pull the back cover off the camera.
- Gently pull the orange wire connected to the motherboard of the camera up and off of the motherboard.

Step 13 — LCD Screen Swivel Assembly



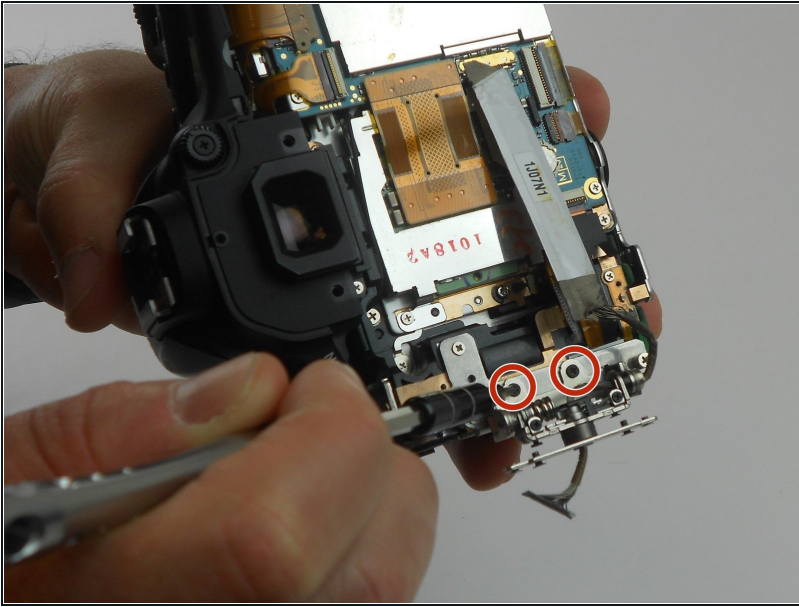
- Carefully pry off the LCD screen connector up from the motherboard to disconnect it, using the plastic opening tool.

Step 14



- Remove one 2.8 mm Phillips #PH00 black screw on the side of the swivel assembly by using the PH00 screwdriver.

Step 15



- Remove the two 2.8 mm Phillips #PH00 black screws on the back of the swivel assembly using the PH00 screwdriver.

To reassemble your device, follow these instructions in reverse order.