



Cuisinart Smart Stick CSB-75 Blade Replacement

Replace the Smart Stick's broken blade by following these steps.

Written By: Jordan Robinson



INTRODUCTION

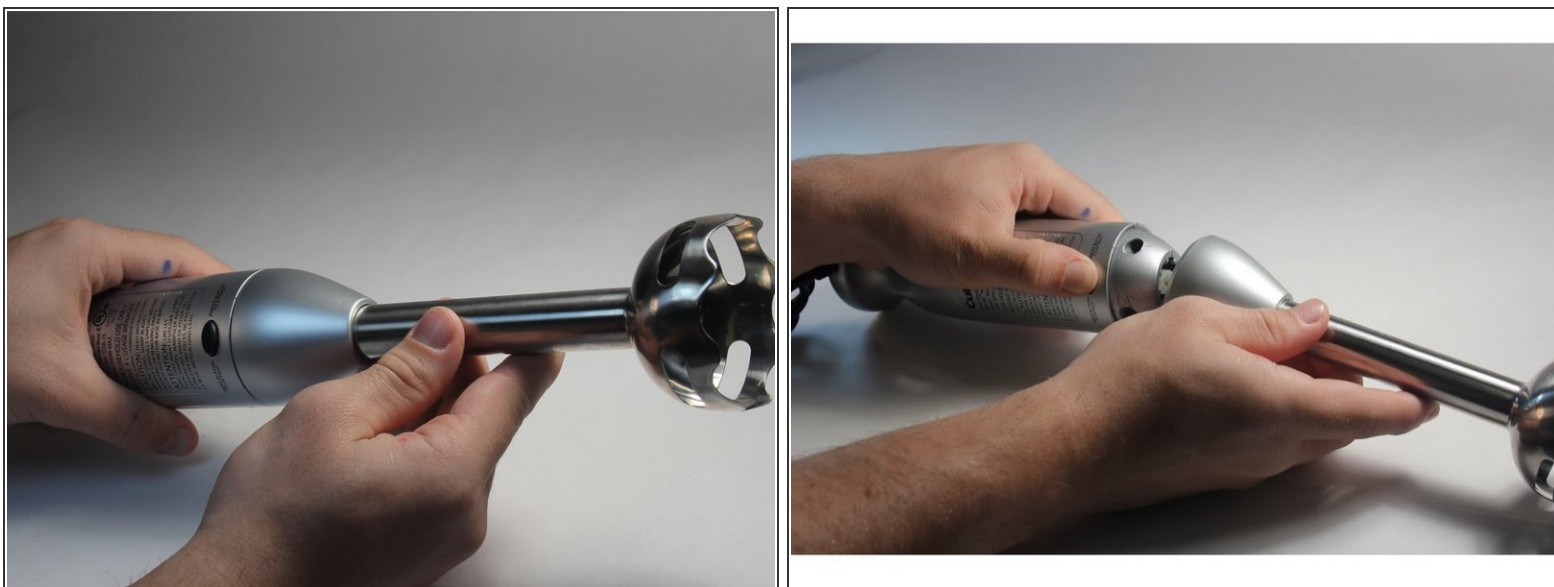
The Cuisinart Smart Stick's blade may break off or become damaged after continuous use. In order to replace the blade you must order the detachable part of the smart stick.

Step 1 — Blade



- Press button to detach smart stick.

Step 2



- Push in replacement piece to the top of the smart stick.

- ⓘ Make sure it is attached properly.

To reassemble your device, follow these instructions in reverse order.