



MacBook Pro 13" Unibody Early 2011 AirPort/Bluetooth Assembly Replacement

Internal Prerequisite.

Written By: Andrew Bookholt



INTRODUCTION

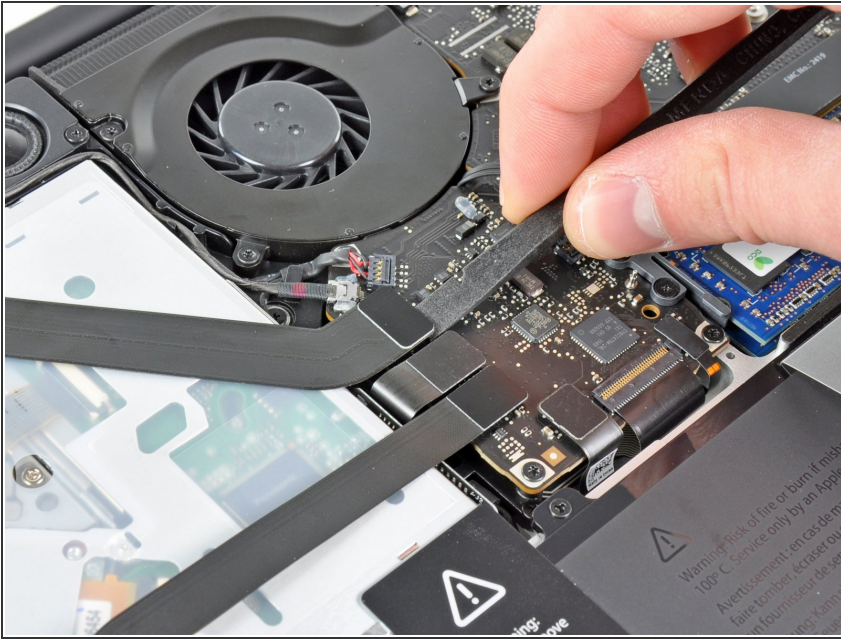
Internal Prerequisite.



TOOLS:

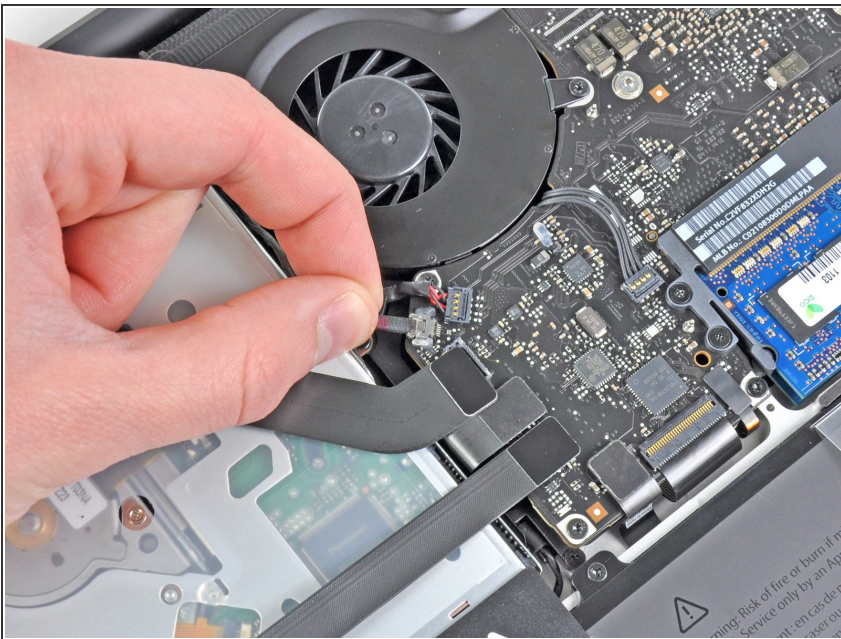
- [Phillips #00 Screwdriver](#) (1)
 - [Spudger](#) (1)
-

Step 1 — AirPort/Bluetooth Assembly



- Use the flat end of a spudger to pry the AirPort/Bluetooth ribbon cable connector up from its socket on the logic board.

Step 2



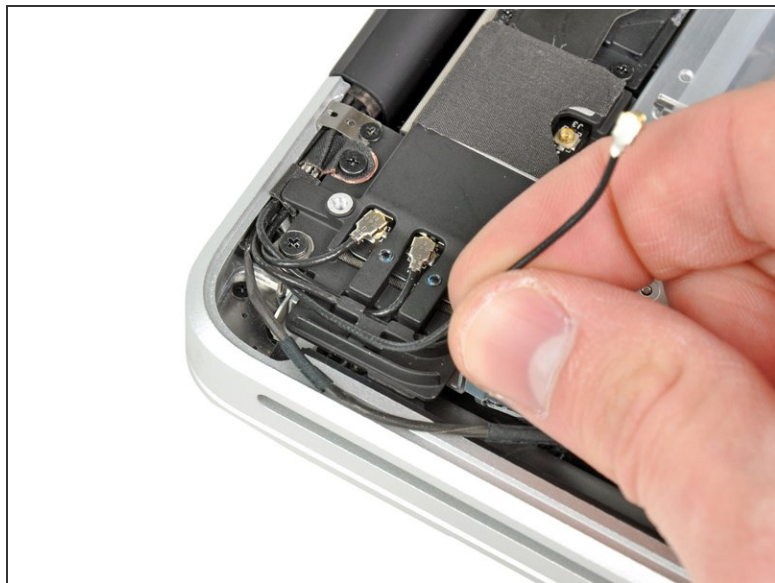
- Carefully pull the camera cable out of its socket on the logic board.
- ⚠ Pull the cable parallel to the face of the logic board. Pulling it upward may damage the logic board or the cable itself.

Step 3



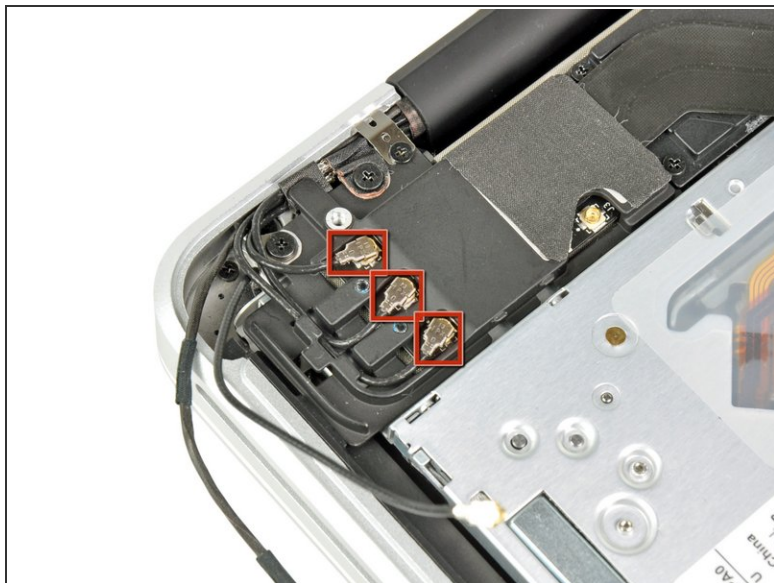
- Carefully move the AirPort/Bluetooth ribbon cable out of the way as you peel the camera cable off the adhesive securing it to the subwoofer and the AirPort/Bluetooth bracket.
- De-route the camera cable out from under the retaining finger molded into the AirPort/Bluetooth bracket.

Step 4



- Use the tip of a spudger to pry the antenna connector closest to the logic board up from its socket on the AirPort/Bluetooth board.
- De-route the antenna cable from under the finger molded into the AirPort/Bluetooth bracket.

Step 5



- Using the method described in the last step, disconnect the remaining three antenna connectors.
- De-route their cables from the slots cut in the AirPort/Bluetooth bracket.

Step 6



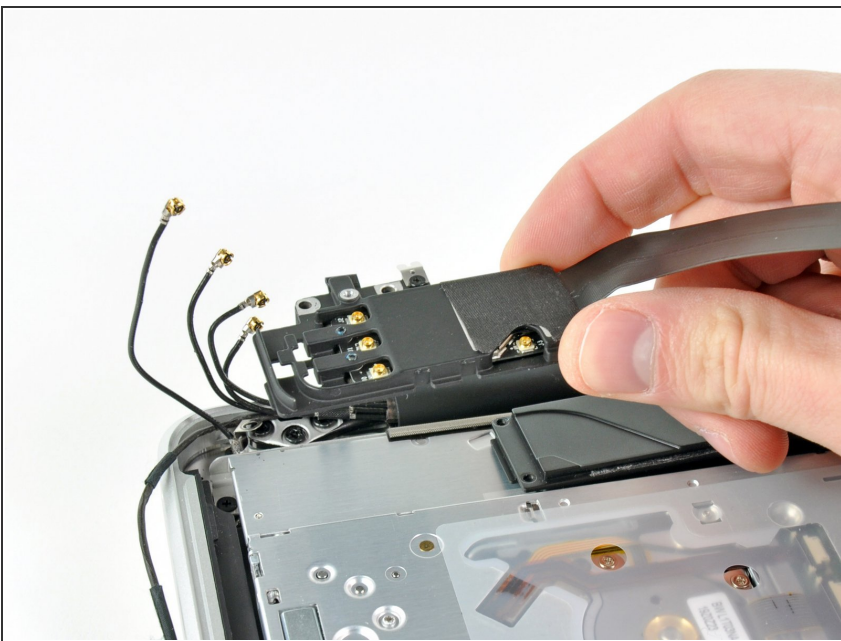
- Remove the following five screws:
 - Two 10.3 mm Phillips screws
 - Two 3.1 mm Phillips screws
 - One 5 mm Phillips screw

Step 7



- Pull the AirPort/Bluetooth assembly and the Subwoofer upward near the center of the side of the optical drive until they clear each other.

Step 8



- Remove the AirPort/Bluetooth assembly, minding the fragile antenna contact near the corner of the upper case.

To reassemble your device, follow these instructions in reverse order.