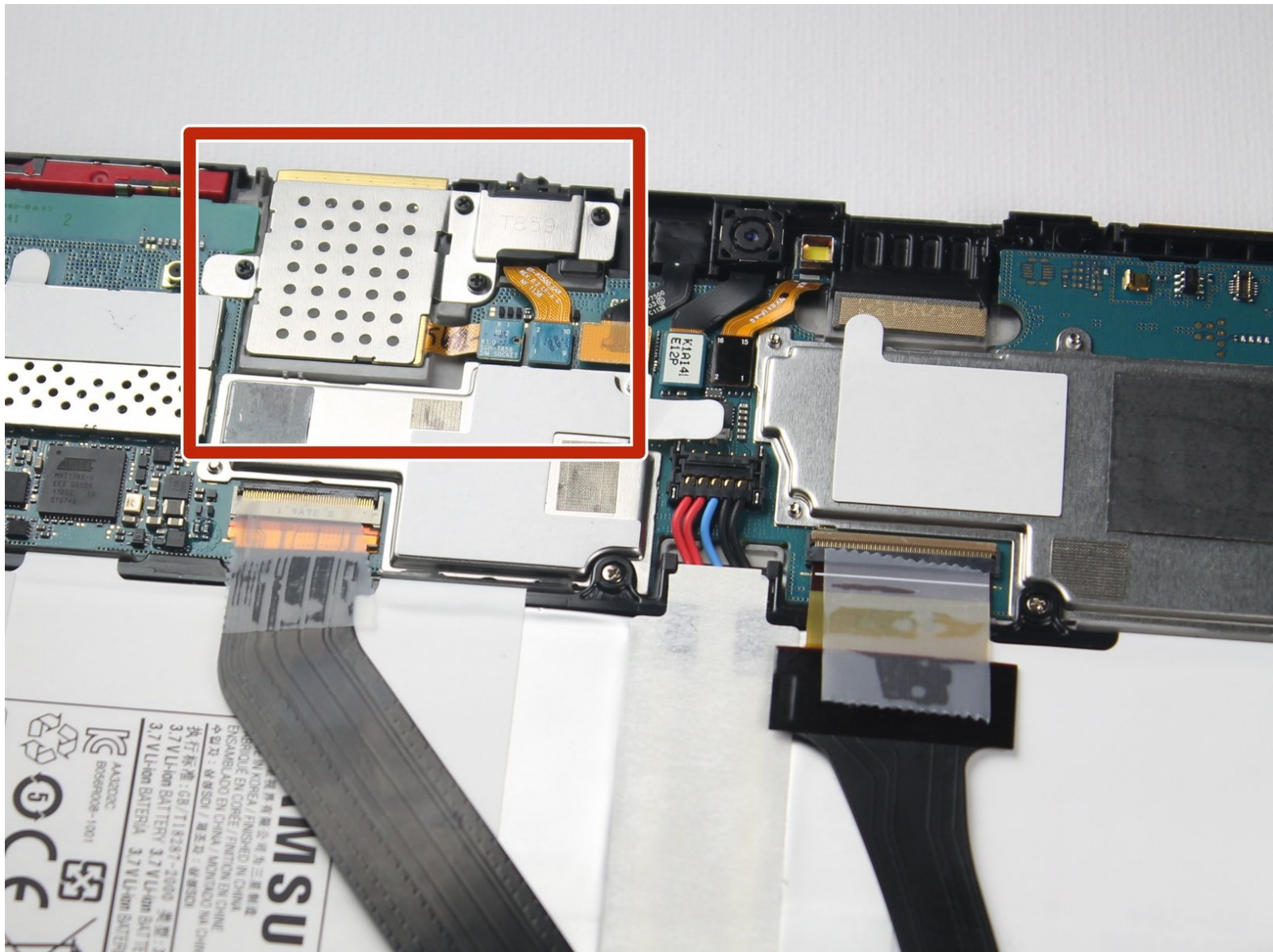




Samsung Galaxy Tab 10.1 4G SIM Card Reader Replacement

If you're having issues with your SIM card reader, this guide will help you replace the faulty reader with a new one.

Written By: Ashley Stark



This document was generated on 2020-11-14 05:04:26 AM (MST).

INTRODUCTION

In this guide you will remove the entire SIM card reader assembly. This is not a complicated process, just make sure you don't misplace the 4 screws.



TOOLS:

- [Phillips #00 Screwdriver](#) (1)
 - [iFixit Opening Tools](#) (1)
 - [Spudger](#) (1)
-

Step 1 — Back Panel



- ❗ Power off your tablet before you begin disassembly.
- Screen side facing you, rotate device 180 degrees so the "SAMSUNG" logo is upside down.

Step 2



- Using the plastic opening tool, start in the center near the charge port and wedge the angled tip between the plastic back and the glass screen.
- Create a wedge and apply pressure. Use the tool to separate the screen from the back until you hear an audible “pop.”
- Continue to wedge the tool about every inch along the current edge.

Step 3




- Once the bottom edge has been loosened, work towards a bottom corner from the other edge and continue to wedge gently until you can “pop” the corner out.
- Continue this process on the other bottom corner until it can be popped out as well.

Step 4



- Place your hand between the device and the back panel. Then continue the wedging motion along the top edge of the device until the back panel comes loose.

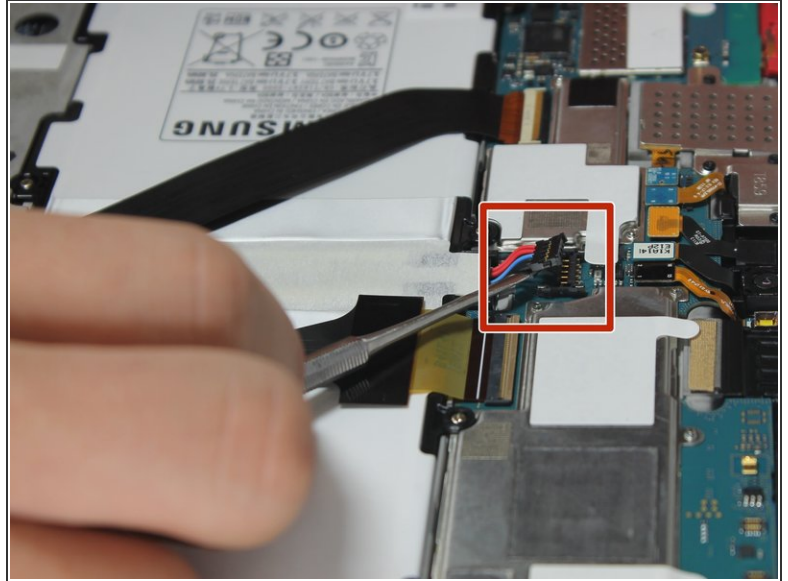
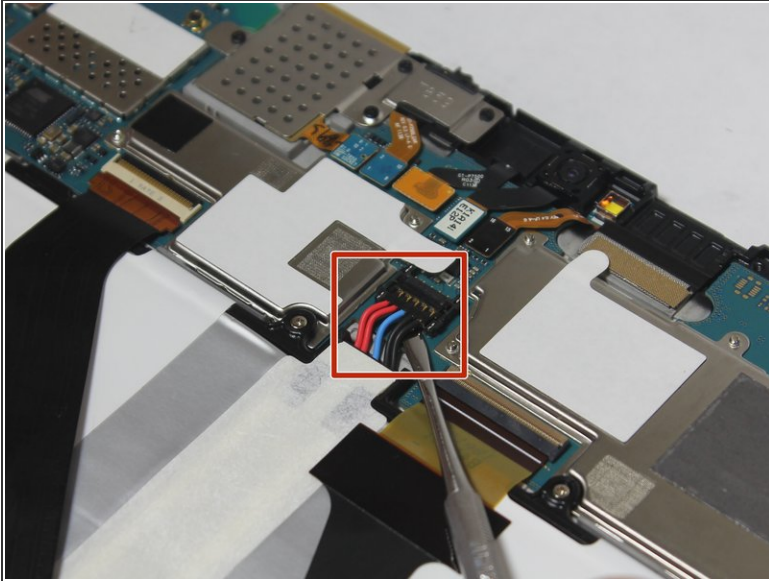
 Do not wedge the tool directly on top of the power buttons and headphone jack. Wedge nearby so that you don't damage internal hardware.

Step 5



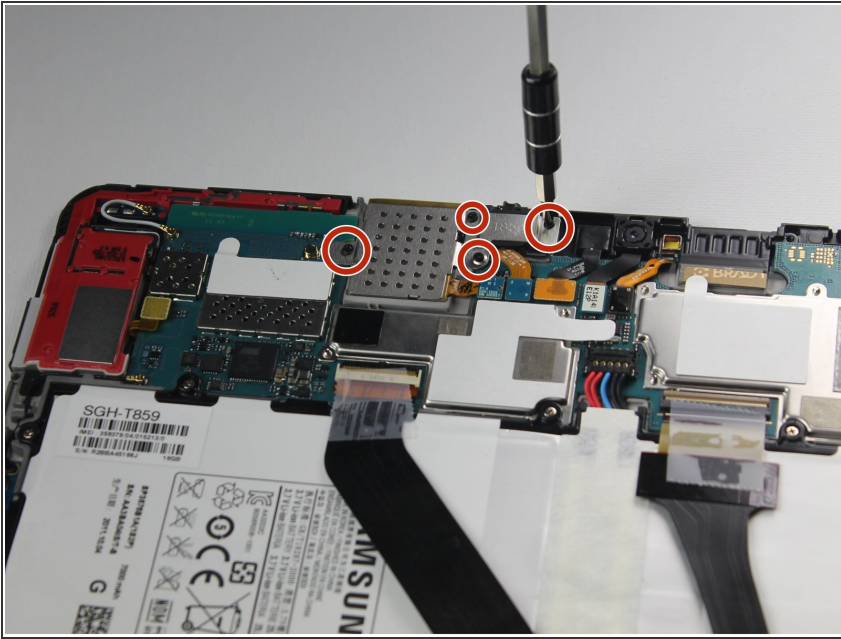
- Remove the back from the device.
- ⓘ Excessive force shouldn't be necessary here. If the back panel is sticking, find the area of the edge closest to the sticking point and wedge the opening tool there until the back panel pops free.

Step 6



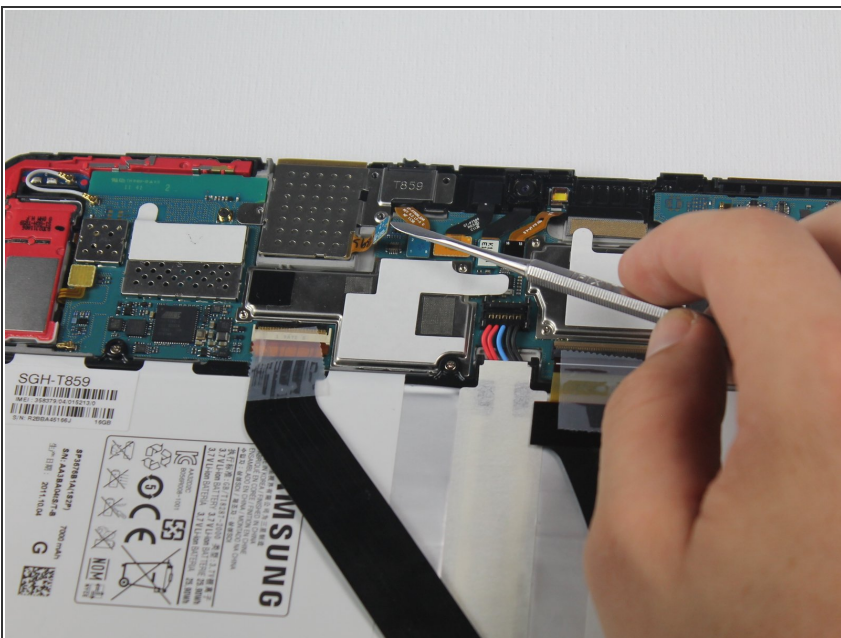
- ⚠ When working with electronics, it's important to choose a tool that's ESD-safe to avoid accidental damage to the device. The regular black nylon spudger or a plastic opening tool should be used whenever possible.
- The connection between the battery and motherboard is a group of four wires in black housing that can be found near the top middle of the device. Using a **plastic** spudger or a flat, slim tool, lift the black connector housing upwards to disconnect it.

Step 7 — SIM Card Reader



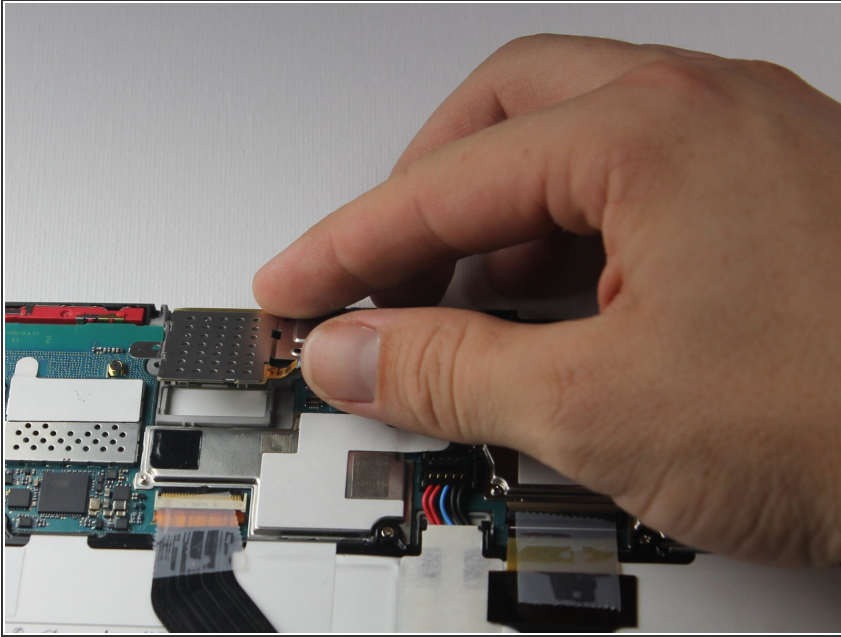
- Use a Phillips #00 screwdriver to remove all 4 black 2.5mm screws securing the silver SIM card reader to the motherboard.

Step 8



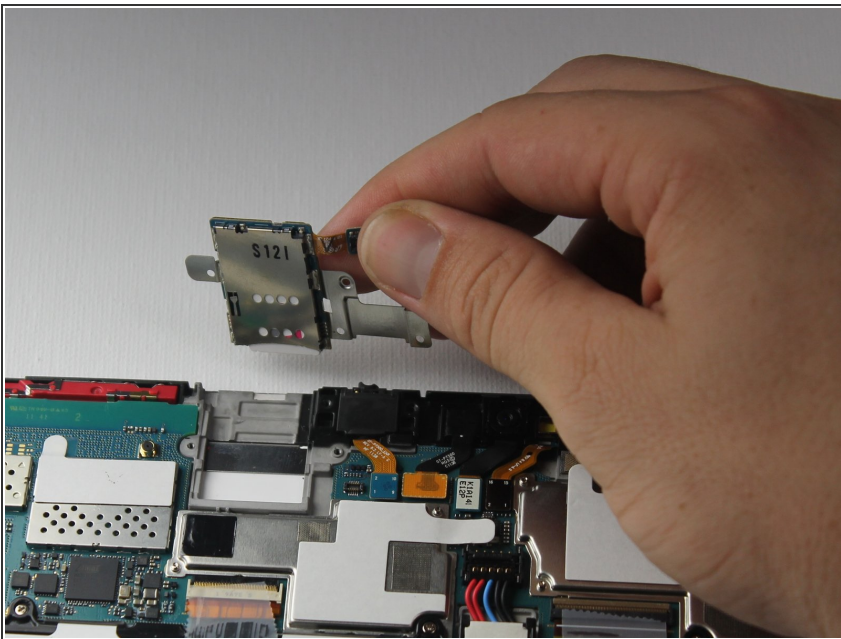
- Using a **plastic** spudger, gently pop the SIM card reader connection off the motherboard.
- ⓘ There are 5 connection points all in a row. The one you want to pull off is the one furthest to the left.

Step 9



- Lift up SIM card reader and remove it.
- ⓘ You should be able to just pick it up with your fingers. If the piece is hard to grasp, slide the metal spudger tool under the reader to lift it.

Step 10



- Lift the SIM card reader off the motherboard, and replace it with a new SIM card reader.
- ⓘ Be sure to retrieve your SIM card from the old reader.

To reassemble your device, follow these instructions in reverse order.