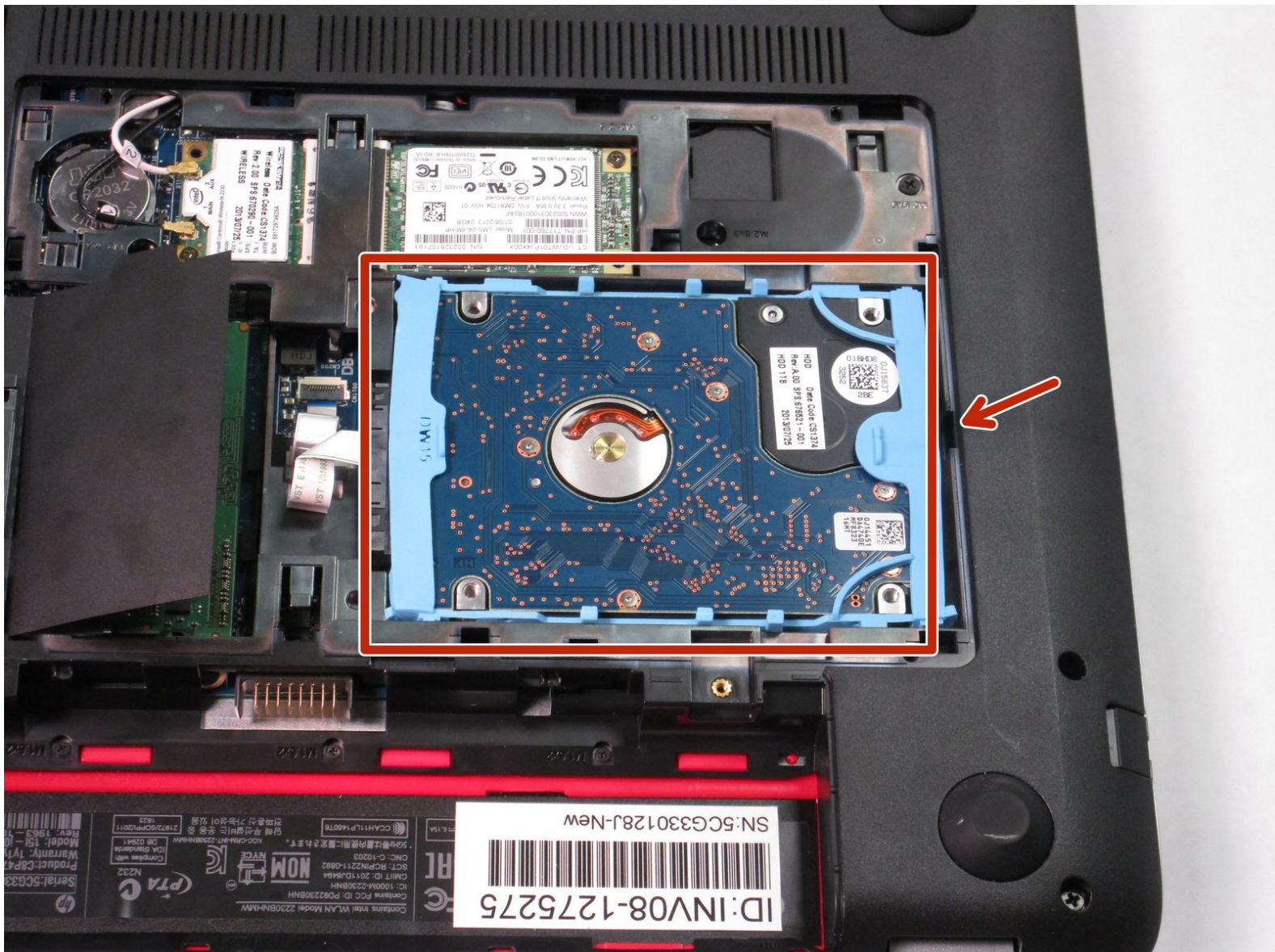




# HP Envy TouchSmart 15 Hard Drive Replacement

You might want to replace the hard drive if it...

Written By: Ramon Villadonga



## INTRODUCTION

You might want to replace the hard drive if it dies, or if you need more room for files. **Be sure to make backups of all your data.**



### TOOLS:

- [iFixit Opening Tool](#) (1)
- [Phillips #0 Screwdriver](#) (1)



### PARTS:

- [Crucial MX500 1 TB SSD](#) (1)
- [Crucial MX500 250 GB SSD](#) (1)
- [Crucial MX500 500 GB SSD](#) (1)
- [Crucial MX500 2 TB SSD](#) (1)

## Step 1 — Battery



- Press the battery release tab and the battery will pop up.

## Step 2



- Remove the battery from the laptop, it will come out easily.



### Step 3 — Accessory Plate



- Remove the single screw holding the accessory plate. This is a PH0 2.0x2.5 screw.

### Step 4



- Pry the accessory plate up from the back of the laptop by applying force upwards where the screw was removed.

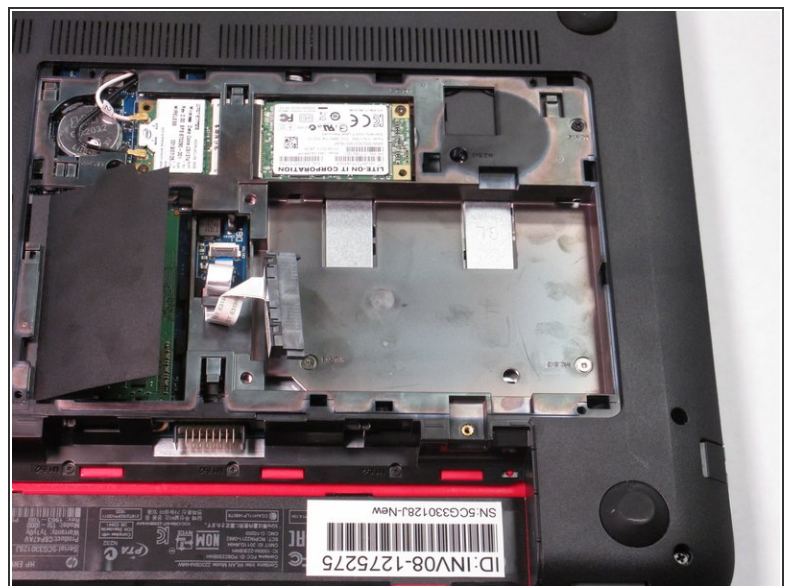


## Step 5 — Hard Drive



- Use the plastic opening tool to pry the hard drive away from the board. Notice that there is a slit centered at the back of where the hard drive is sitting. This is where you'll insert the plastic opening tool as shown in the photo. Finally, pry with the plastic opening tool to remove the hard drive.

## Step 6



- Firmly grasp the connector's base as shown and pull to remove from the hard drive.

To reassemble your device, follow these instructions in reverse order.