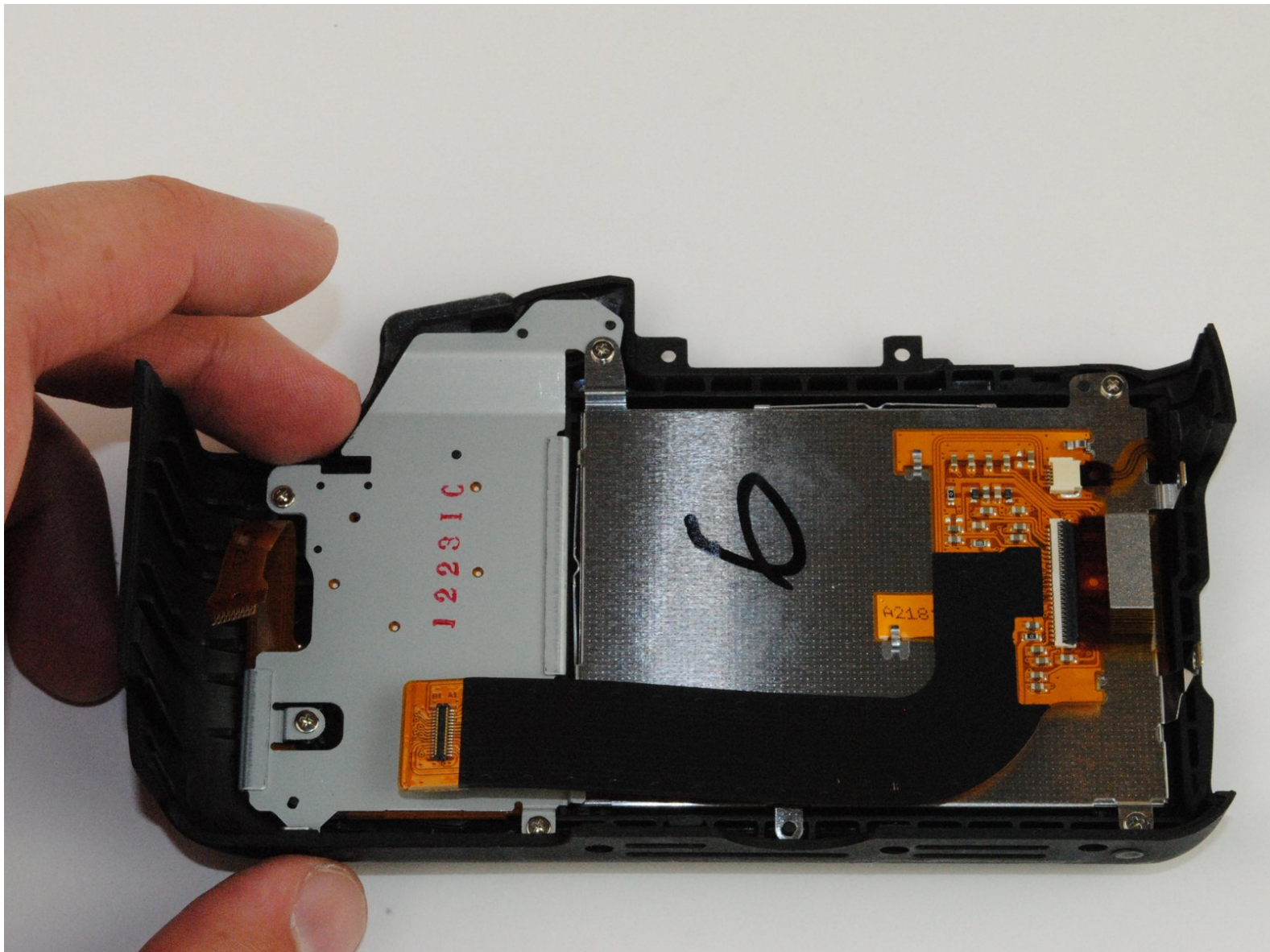




# Canon EOS Rebel T5 LCD Screen Replacement

This guide will show the reader how to remove and replace the LCD screen for their Canon EOS Rebel T5 camera.

Written By: Austin Tucker



# INTRODUCTION

If the display on your camera has stopped working or is cracked and otherwise not functional, it will need to be replaced. This guide will show you how.

---

## TOOLS:

- [Phillips #000 Screwdriver](#) (1)
  - [Fingers](#) (1)
-

## Step 1 — Battery



- Lay the camera on its back so that the card/battery door is facing you.
- Using your fingernail, slide the tab on the battery door up to release the battery door latch.

## Step 2



- Lift the now free card/battery door to reveal the battery compartment.
- Push the gray lever to the right side so that the battery can be removed and replaced with a new one.



## Step 3 — Back Panel



- Turn the camera so that the back is facing to your right.
- Remove the 5mm Phillips #000 screw above the rubber USB port cover.

## Step 4



- Remove the rubber piece.
- Unscrew the two screws under the rubber cover to completely remove the rubber cover piece.
- ⓘ It is held in place by a notched tether, but can be easily manipulated to slide out.

## Step 5



- Turn your camera so that the bottom is facing you.
- Remove the 5mm Phillips #000 screws.

## Step 6



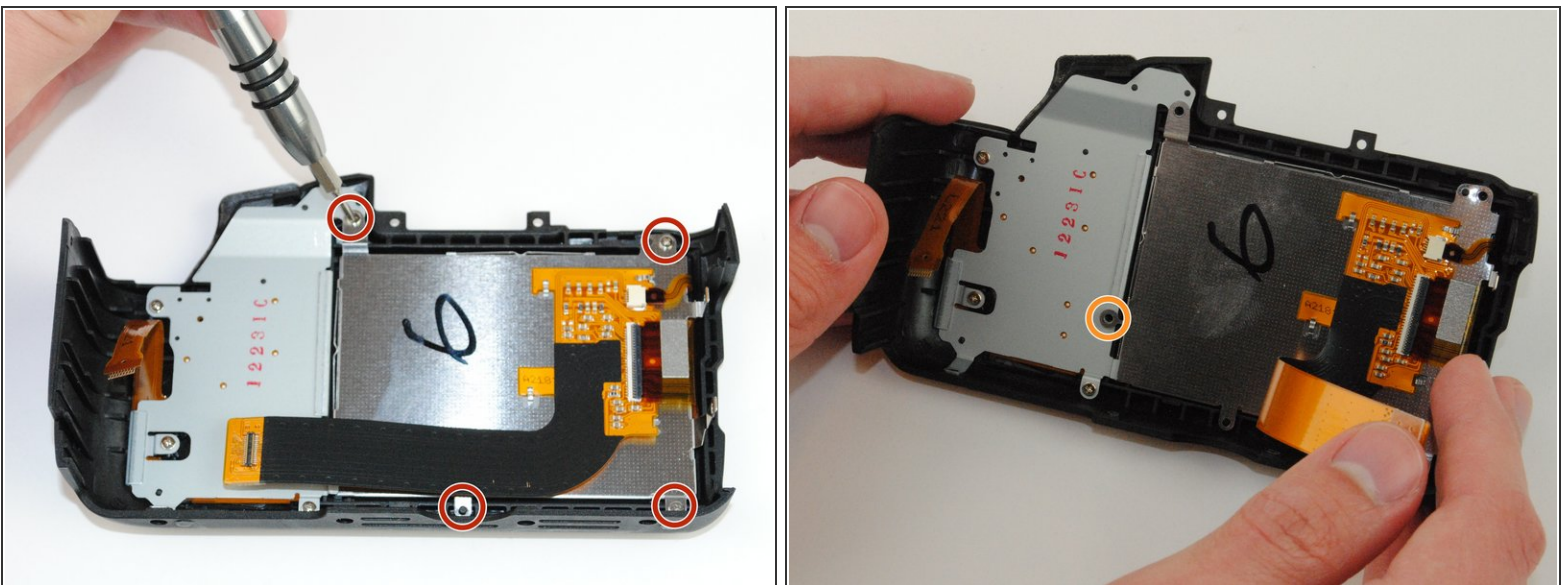
- Now turn the camera so that the front is facing towards your right.
- Remove the two remaining 5mm Phillips #000 screws.

## Step 7



- Now that all of the exterior screws have been removed, grip the camera firmly on both sides.
- Gently pry the back panel from the main body of the camera.
- ⚠ There are two ribbon cables that need to be removed in order for the back panel to come free from the camera body, as indicated.
- ⓘ This back panel contains various control components of the camera as well as the LCD screen.

## Step 8 — LCD Screen

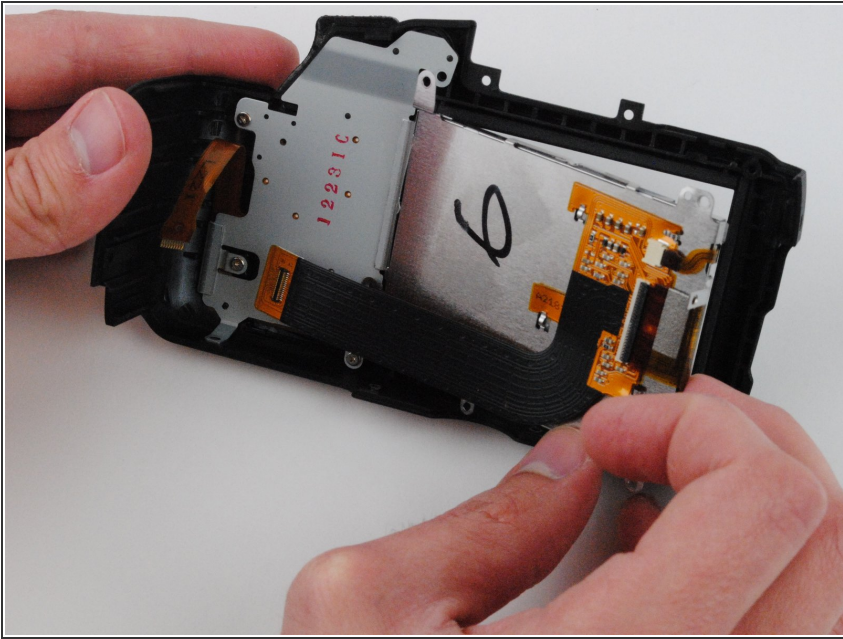


- Remove the four silver 4mm Phillips #000 screws connecting the LCD screen to the back of the camera.
- Be sure to lift the ribbon cable to remove the remaining hidden black 4mm Phillips #000 screw.

This document was generated on 2020-11-22 06:26:25 AM (MST).



## Step 9



- The LCD screen can now be lifted from the right side to be replaced.

To reassemble your device, follow these instructions in reverse order.