



Canon EOS Rebel XTi Flash Module Replacement

After long term use, it is possible that the...

Written By: Luis Calle



INTRODUCTION

After long term use, it is possible that the flash module on your camera is stuck in position and can only be opened manually, or the light has burnt out. In either case it is safe to say that the module needs to be replaced. Use caution when removing the module because there are several wire harnesses connecting the module to the motherboard.

TOOLS:

[Tweezers](#) (1)

[JIS #000 Screwdriver](#) (1)

[JIS #00 Screwdriver](#) (1)

Step 1 — Battery



- Place the camera upside down, and position it to where the back of the camera is visible.

Step 2



- Pull the orange tab to the right to release the primary battery.

Step 3



- To remove the secondary battery, reposition the camera to where the display screen is facing upwards.
- Place your finger inside the empty battery compartment and pull away from the camera on the ridged battery tab.

Step 4 — Memory Card



- Place the camera on its side with the soft touch grip facing up and the top of the camera facing right.

Step 5



- Slide the memory card door in the direction of the arrow engraved on the camera.
- Once the door has slid open to its full position, lift up on the door.

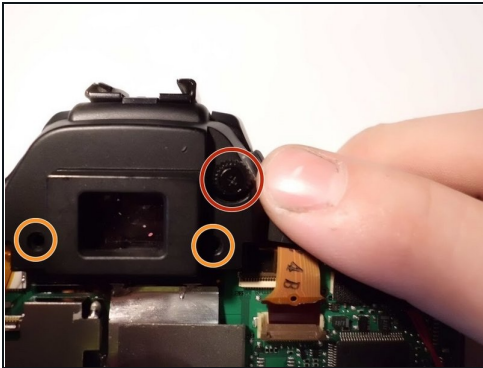
Step 6



- With the door open, push down the small black plunger next to the CF slot. The CF card will disengage from the slot and be ejected far enough that you can grasp it between thumb and forefinger and remove it from the slot.

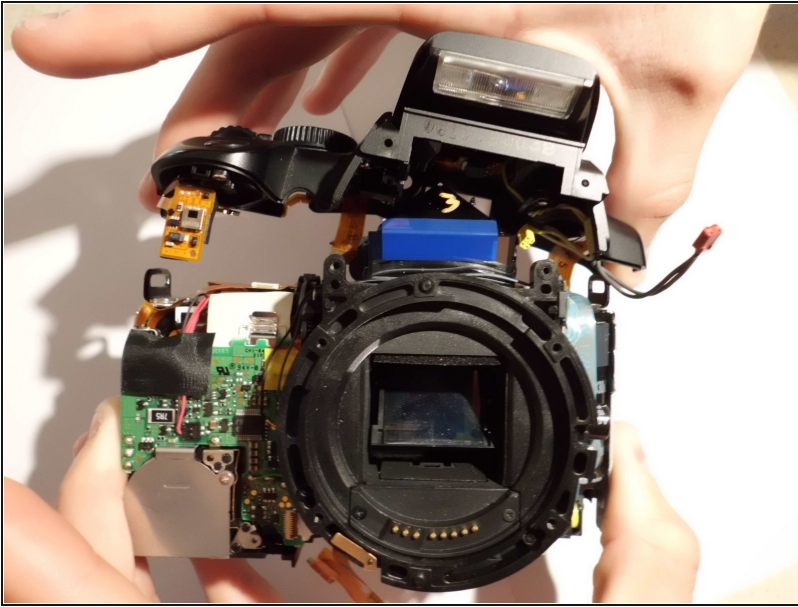
ⓘ The plunger will stay in its depressed position until a CF card is again inserted in the slot.

Step 7 — Top Casing



- Remove the single 10 mm JIS #00 shoulder screw.
- Remove the two 6 mm JIS #00 screws.

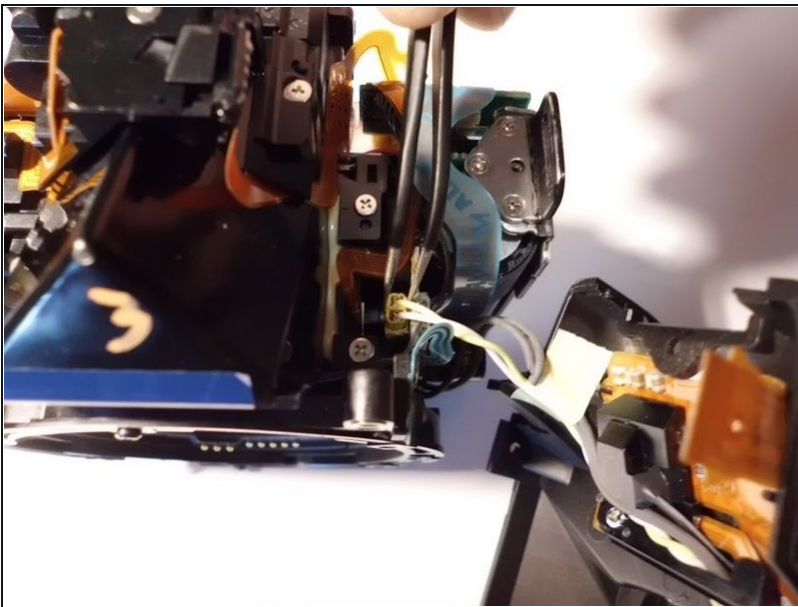
Step 8



- Separate the top casing from the electrical components enough to expose the wire harnesses that will need to be disconnected.

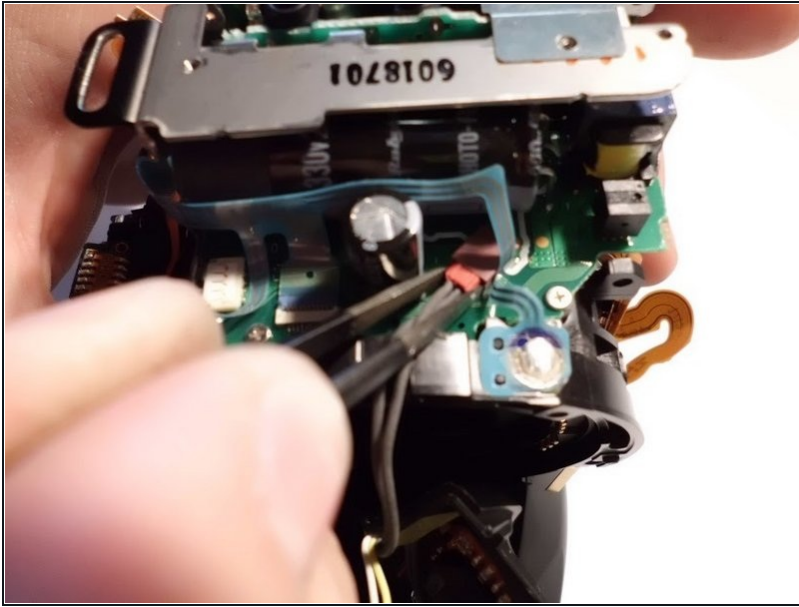
⚠ Ensure to remove the casing gently. There are several wire harnesses connecting the motherboard to components on the casing.

Step 9



- Unplug the yellow connector located on the top of the camera.

Step 10



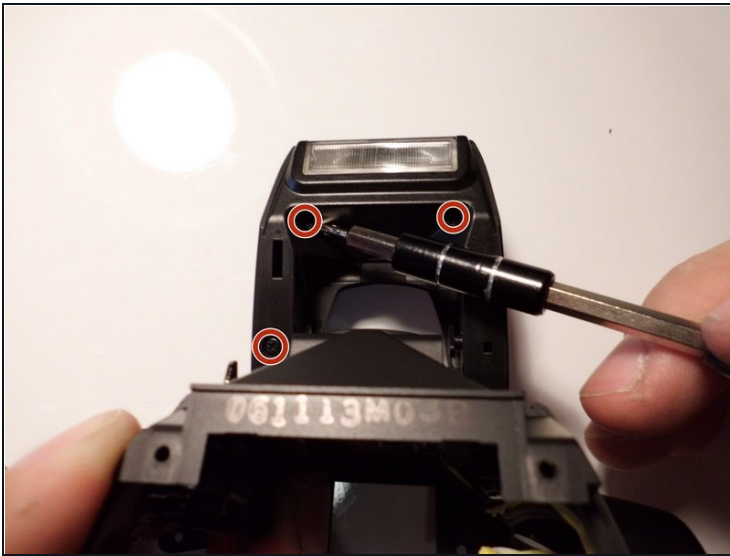
- Disconnect the red connector located by the USB port.

Step 11 — Flash Module



- Use a J00 screwdriver to remove the two 3 mm screws on the retention arms. There is one arm on each side of the module.
- ⓘ Do not lose the washers.
- Remove the Retention Arms.

Step 12



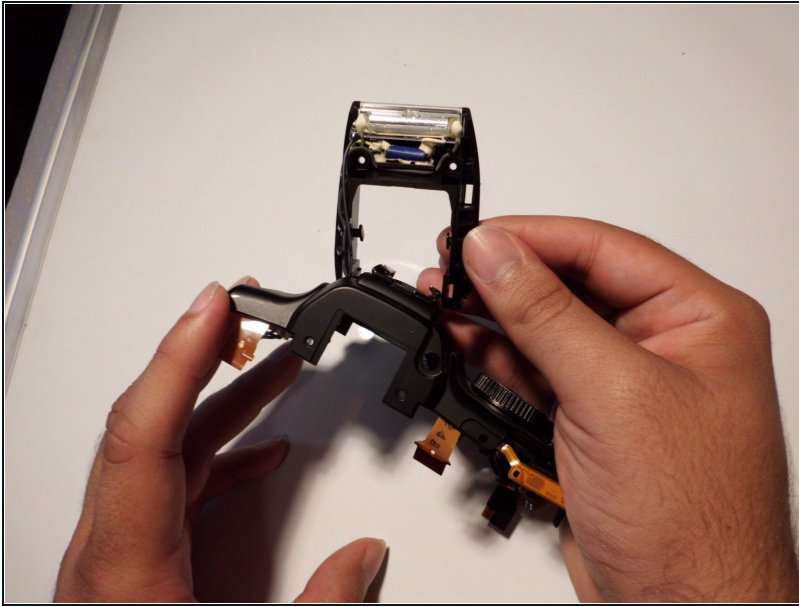
- Use a J00 screwdriver to remove the three 3 mm screws on the flash cap.
- Remove the flash cap.

Step 13



- Remove the 7 mm phillips head screw on the flash hinge.
- Using the straight [tweezers](#) remove the spring from the hinge hole.

Step 14



- Lift the side of the flash module closest to the on/off button towards the opposite side of the camera.
- Pull the wires gently through the top of the camera to completely remove the flash module.
- ☑ Be Gentle with the wires, even though they have already been disconnected when removing the top casing

To reassemble your device, follow these instructions in reverse order.