



# Corsair K65 disassembly Water Damage cleaning

How to open up a Corsair K65 Keyboard to fix water damage (or any other kind of damage that will require access to the inside of the keyboard).

Written By: Michael Le



---

## INTRODUCTION

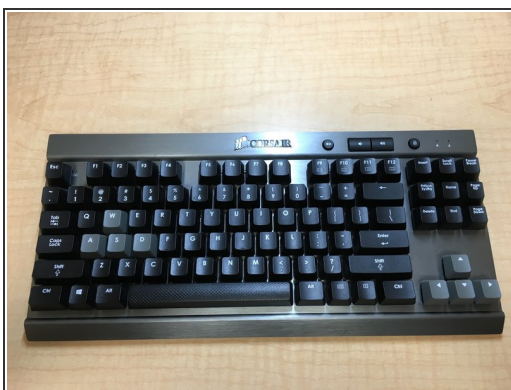
Did you spill coffee or any other liquid on your Corsair K65? Or do you just need to open up the keyboard to access the interior? This guide will teach you how to do either one of those!

---

### TOOLS:

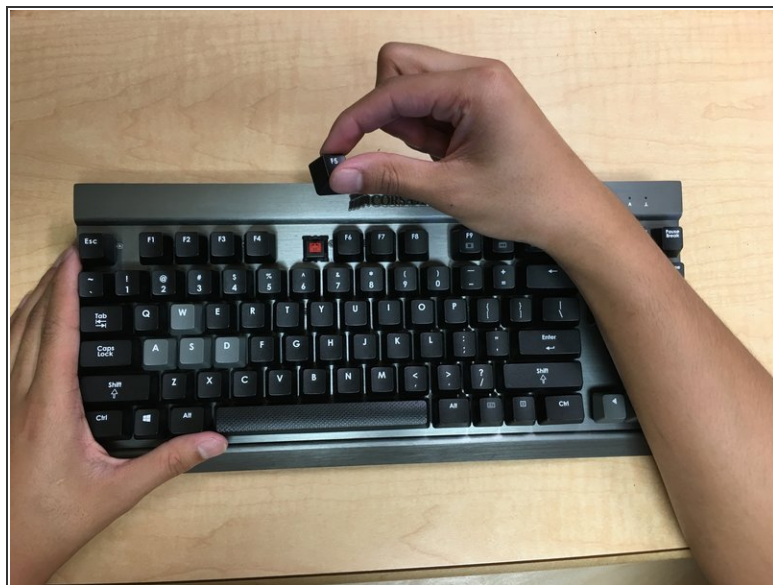
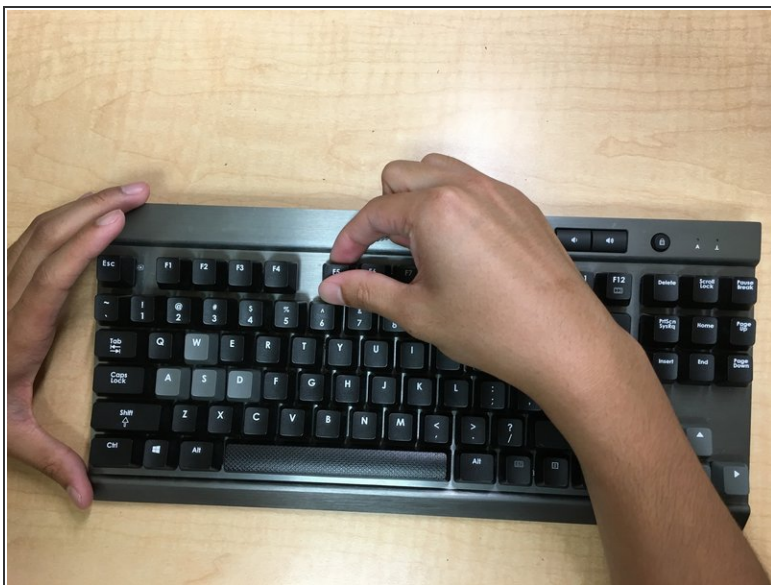
- [Phillips #000 Screwdriver](#) (1)
  - [Sharp knife](#) (1)
  - [Cotton Swabs](#) (1)
  - [High Content Rubbing Alcohol](#) (1)
-

## Step 1 — Corsair K65 disassembly Water Damage cleaning



- Unplug your keyboard. The wire is located near the back and on the bottom of the keyboard.
- Place your keyboard onto a workspace with plenty of room.

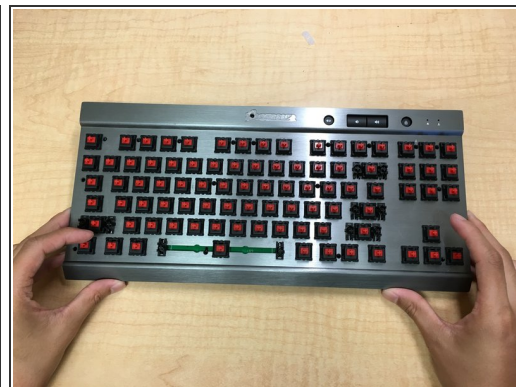
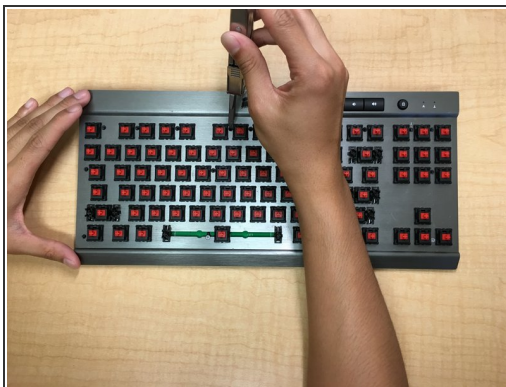
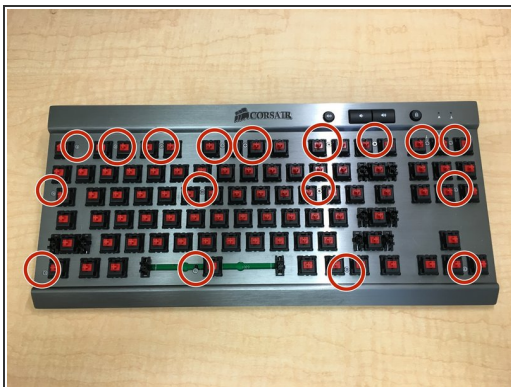
## Step 2



- Pry each keycap off by grabbing the keycap with your fingers and pulling directly up.
- ⚠ Pulling the keycaps off at an angle may damage the keys or the switches on the keyboard.
- ⓘ A specialized tool to remove the keycaps will make this process a lot easier and faster, but is not required.



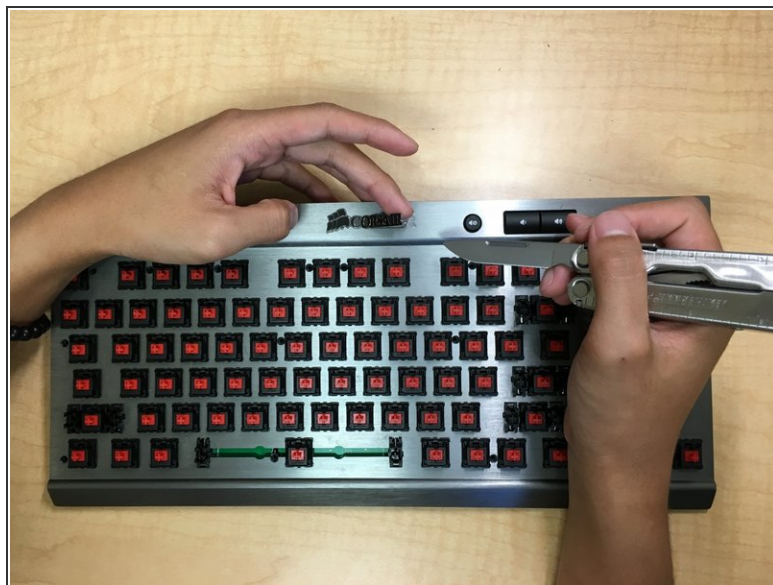
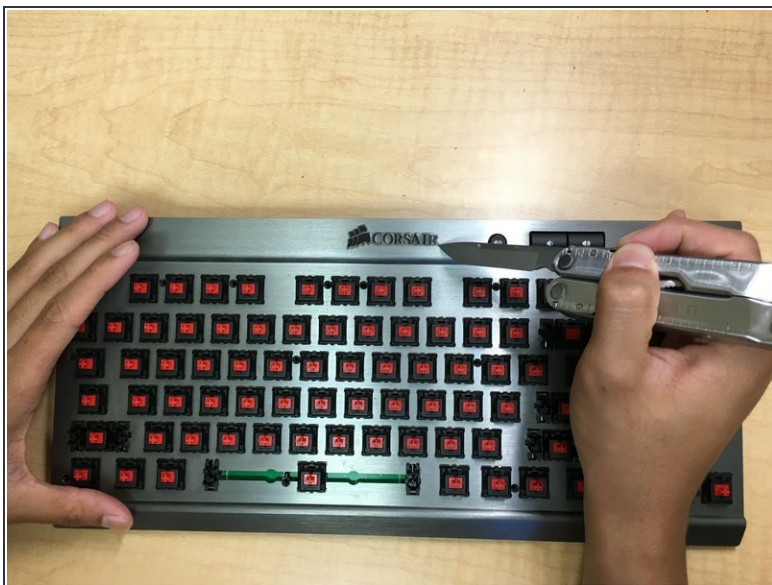
### Step 3



- Unscrew the exposed 9mm Phillips #0 screws with your mini Phillips #0 screwdriver.

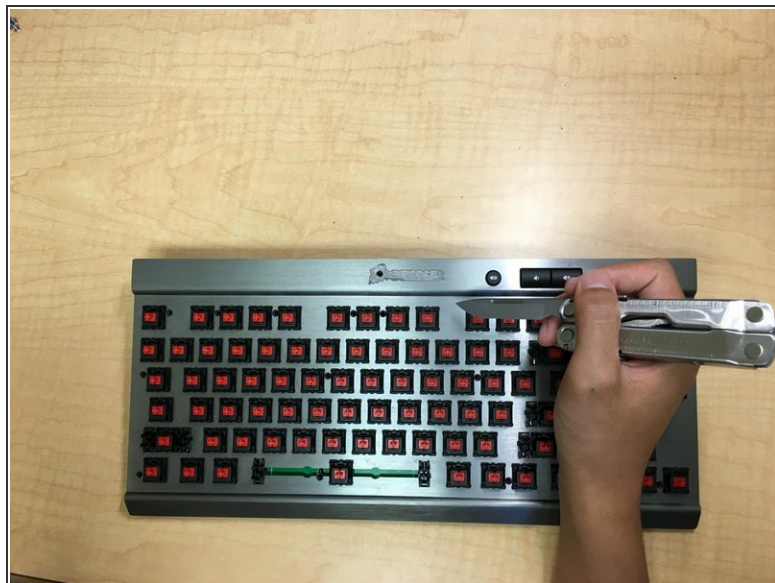
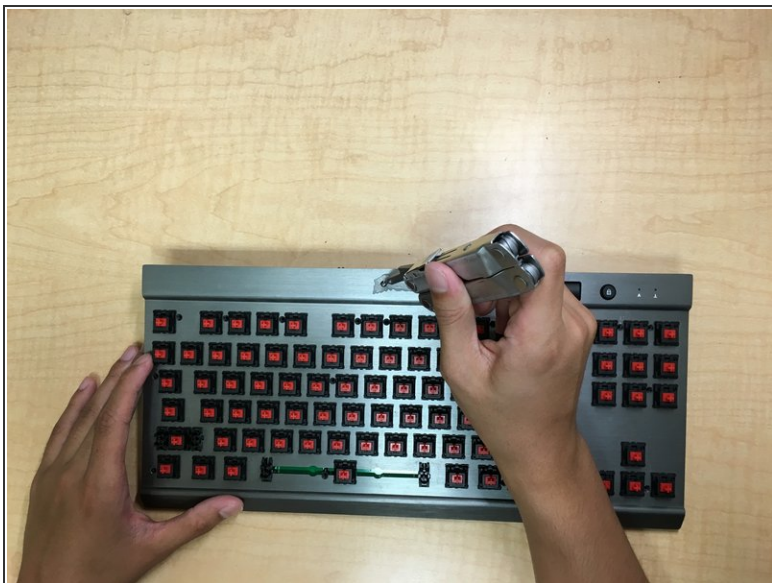
☞ There should be 17 exposed screws in total.

### Step 4



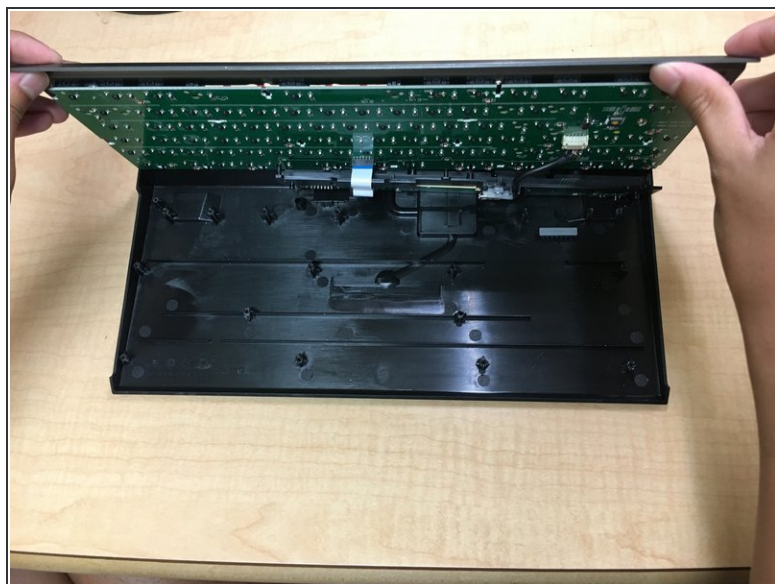
- Peel back the Corsair logo with a knife.
- Remove the logo, exposing another 9mm Phillips #0 screw.

## Step 5



- Unscrew the now exposed 9mm Phillips #0 screw.
- ✦ There should now be a total of 18 9mm Phillips #0 screws.

## Step 6



- Carefully separate the bottom half of the keyboard from the top half of the keyboard.

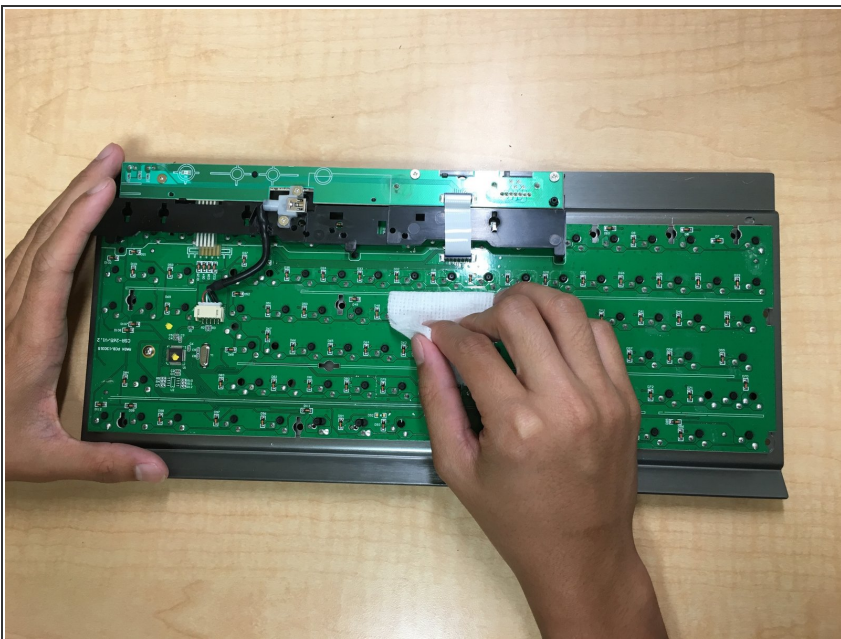


## Step 7



- Apply the rubbing alcohol to your cotton pad.

## Step 8



- Wipe down the affected parts of the keyboard interior with the alcohol-soaked pad.
- Allow the interior of the keyboard to dry for a few minutes before reassembling the keyboard.

To reassemble your device, follow these instructions in reverse order.