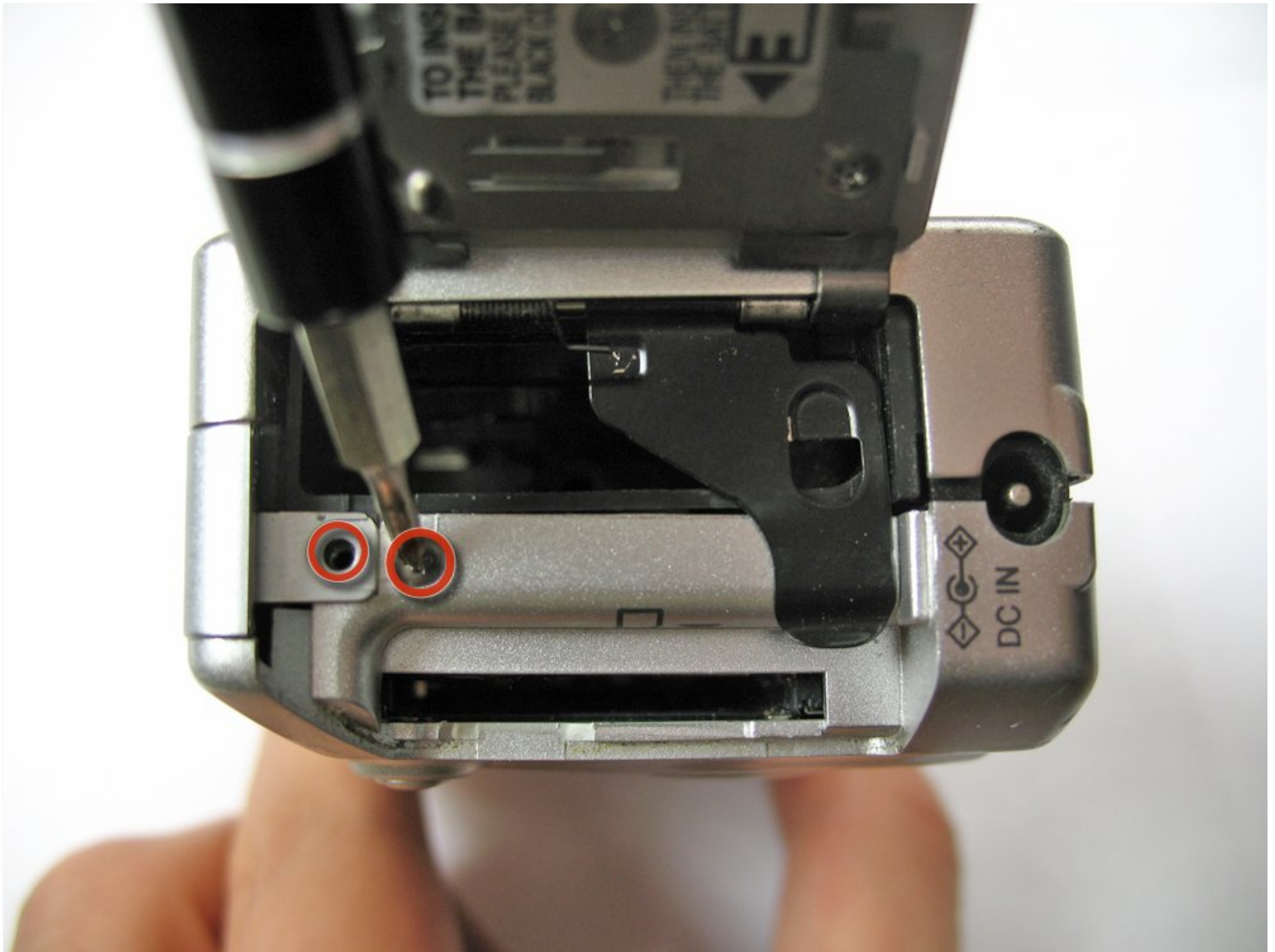




Panasonic Lumix DMC-F7 Back Case Replacement

Steps for removing the back half of the case...

Written By: Alex Penman



INTRODUCTION

Steps for removing the back half of the case and replacing it with a new one.

TOOLS:

Spudger (1)

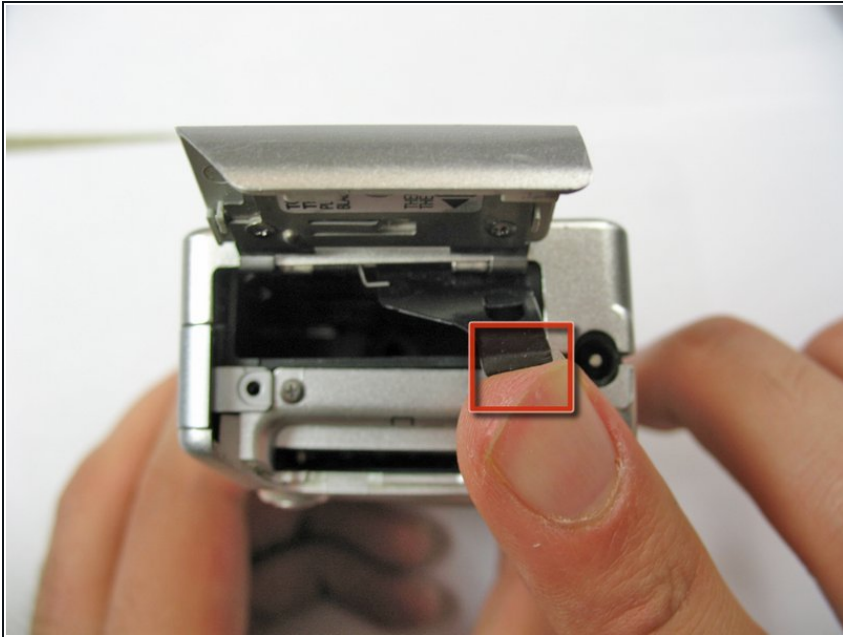
Phillips #00 Screwdriver (1)

Step 1 — Battery




- Slide the lock switch to the right so that it is in the unlocked position.
 - Use your finger to slide the battery hatch in the direction of the downward arrow so that the hatch is open.
- ⓘ Both battery and memory card should now be visible.


Step 2



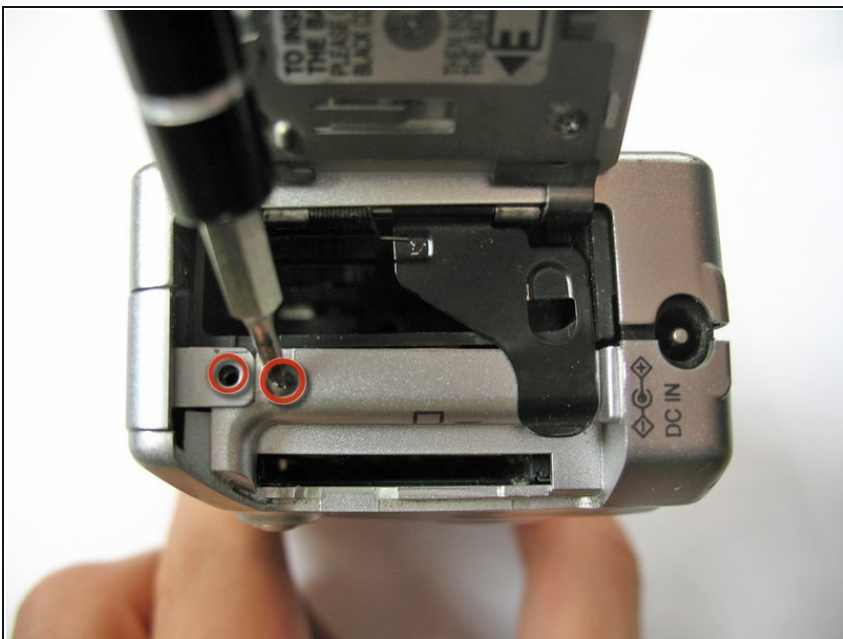
- Open the battery hatch and then the black cover to expose the battery compartment.

 The camera used to create these repair guides did not have a battery and memory card.

- Remove the battery.

 When installing the new battery, ensure it is in the same orientation as before.

Step 3 — Back Case



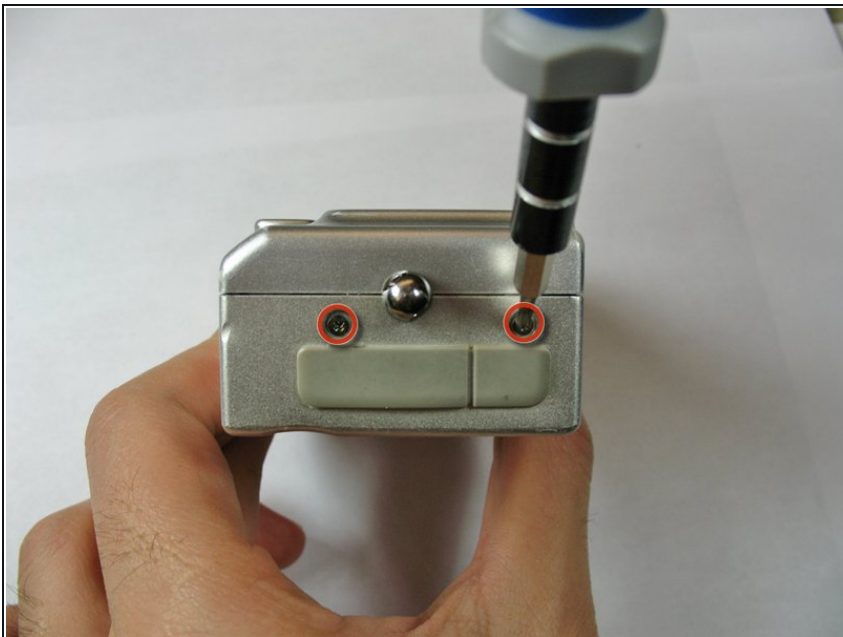
- Using the Phillips #00 screwdriver, remove the two 2.8 mm screws located under the hatch.

Step 4



- Use the Phillips #00 screwdriver to remove the three 2.8 mm screws on the bottom of the camera.

Step 5



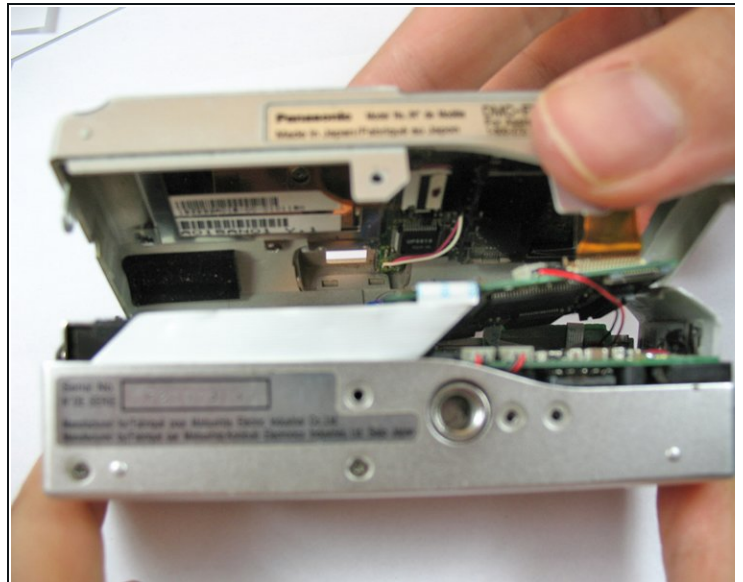
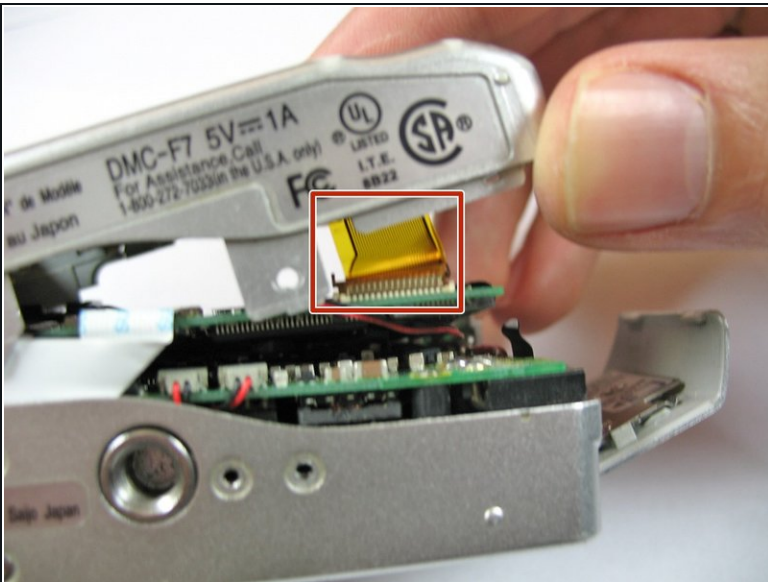
- Use the Phillips #00 screwdriver to remove the two 2.8 mm screws on the side of the camera.

Step 6



- Use a spudger to pry open the case at all sides.

Step 7



⚠ Be careful not to damage the ribbon cable when opening. Ensure it is still attached.

- Use your fingers to carefully remove the back casing from the front of the camera.

Step 8



- Place the camera on a flat surface with the front side facing down.
- Use the spudger to flip up the retaining flap and slide the ribbon cable out of the connector.
- Hold down on the camera's metal casing with one hand. Using your other hand, remove the back case from the rest of the camera.

To reassemble your device, follow these instructions in reverse order.