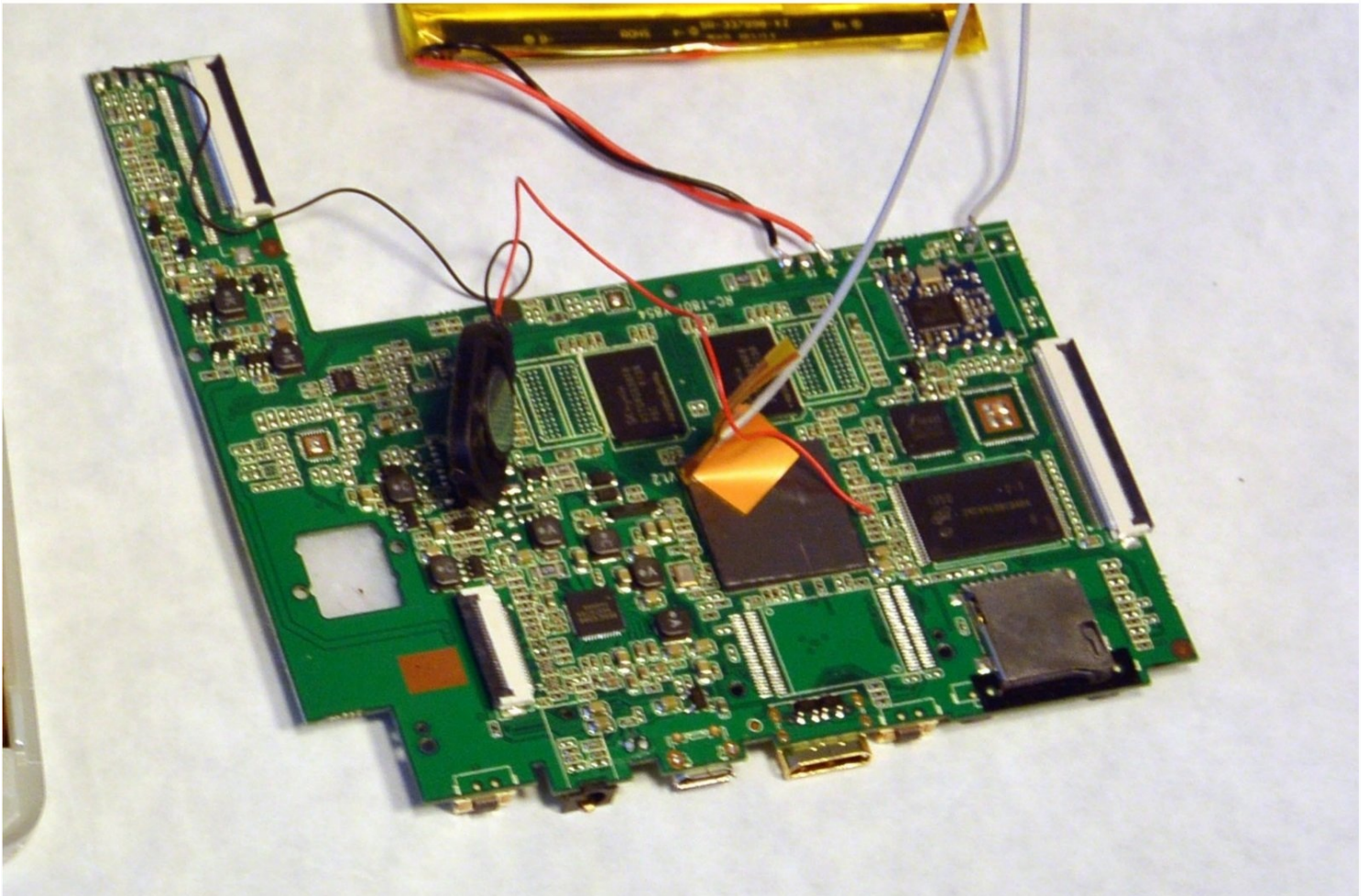




Zeki TBQG884B Motherboard Replacement

This is a guide for replacing the motherboard...

Written By: Linlin Cai



INTRODUCTION

This is a guide for replacing the motherboard of your Zeki device.

First, to reach the motherboard, remove the plastic backing, then the battery, and lastly the camera.

After replacing the motherboard, the device will need to be reassembled in the opposite order.

TOOLS:

[64 Bit Driver Kit](#) (1)
[Phillips #1 Screwdriver](#) (1)
[Spudger](#) (1)
[iFixit Opening Tool](#) (1)

PARTS:

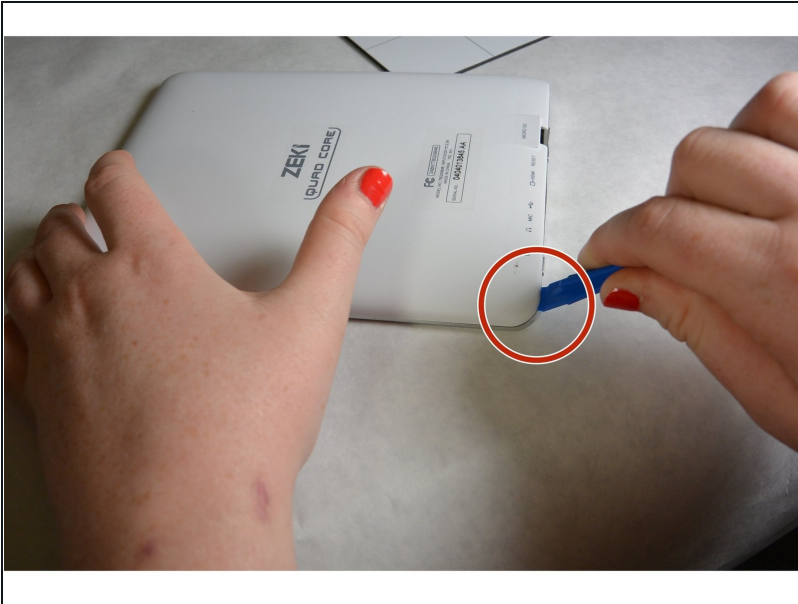
[Zeki TBQG884B Motherboard](#) (1)

Step 1 — Rear Case



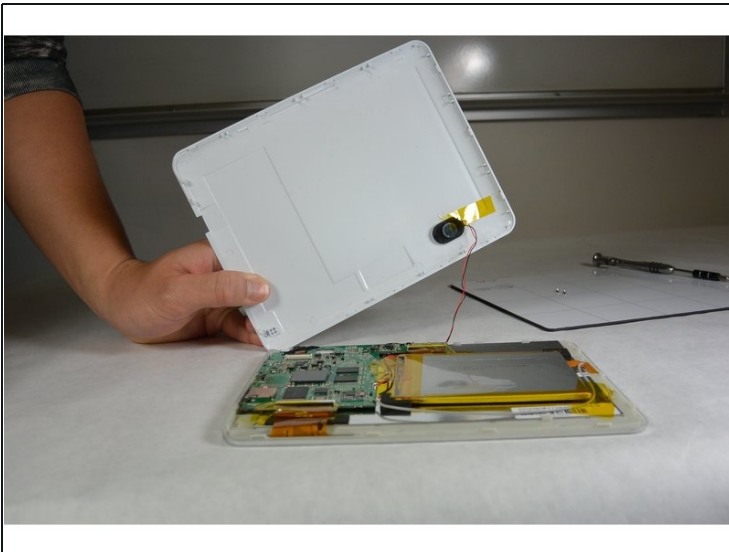
- Remove the two screws from the end of the device where the ports are located using a Phillips #1 screwdriver.

Step 2



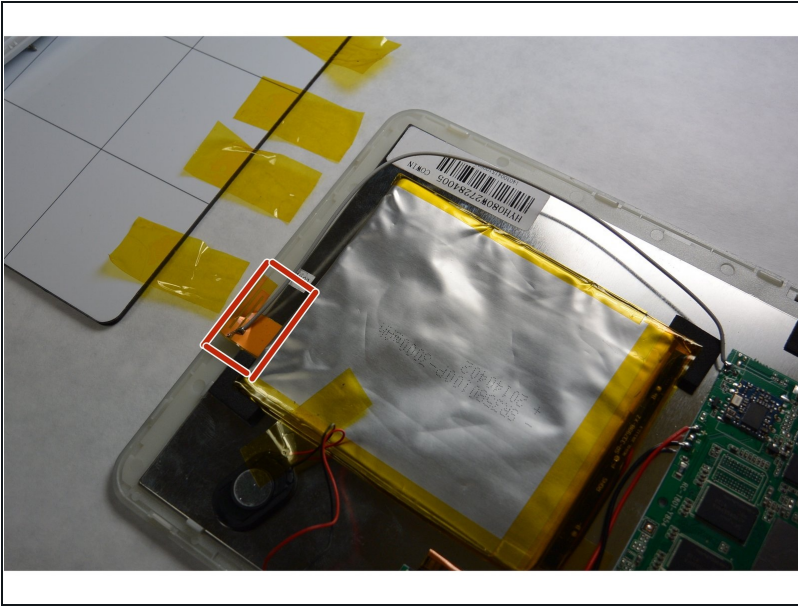
- Place the tablet down so that the screen is facing away from you.
- Insert the tip of your opening tool into the small gap between the gray and white plastic covering. Pry it open and you should hear the clips opening up.
- Gently work your way around the perimeter of the tablet's edge.

Step 3



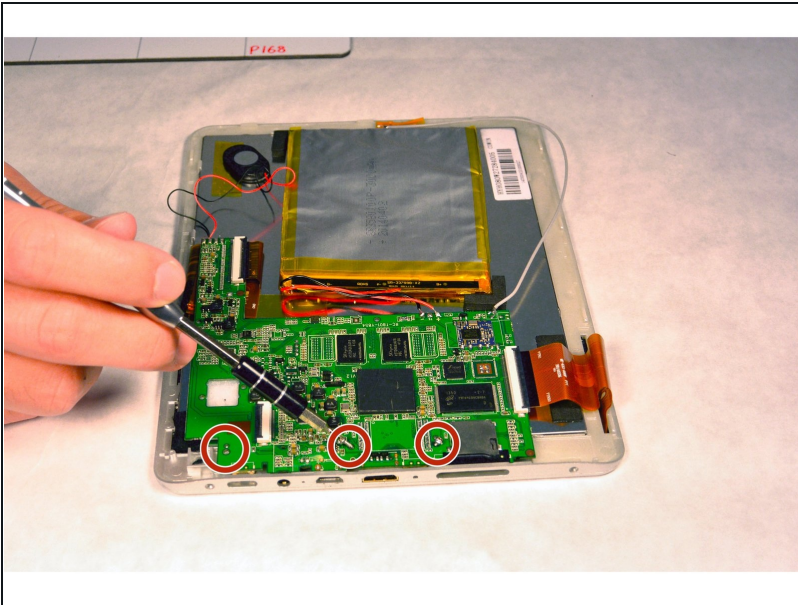
- Remove the back cover
- Remove any tape on the speaker and detach the speaker from the back plate.
 - ☑ The speaker is connected to the motherboard by two soldered wires. Don't break them when you remove the speaker.

Step 4 — Motherboard



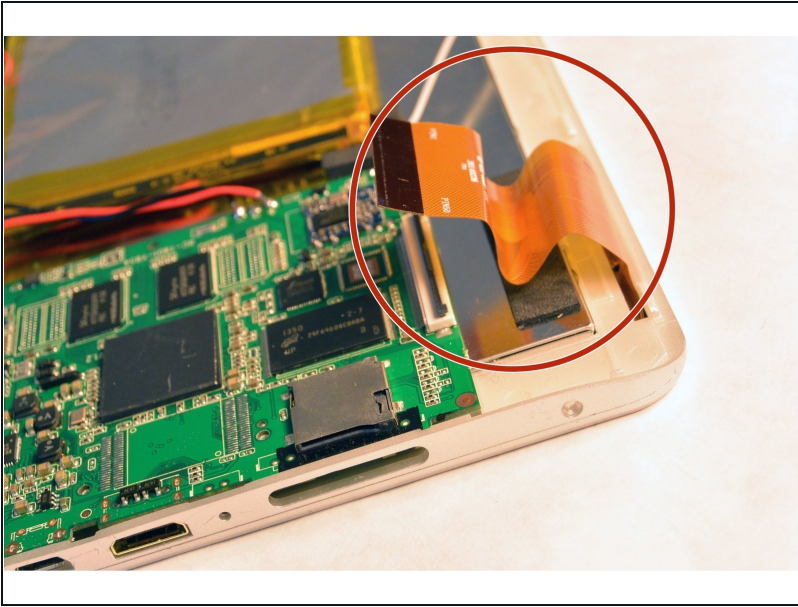
- Disconnect the Wi-Fi antenna cable from the motherboard.

Step 5



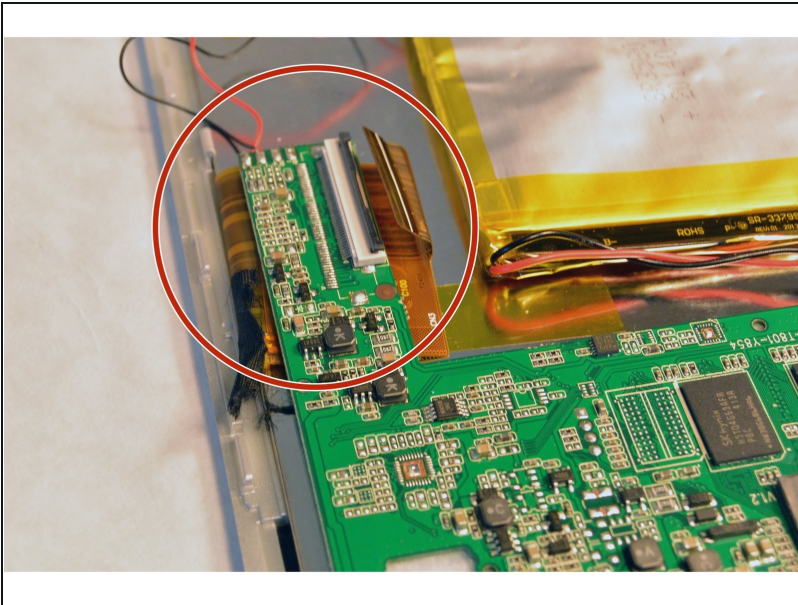
- Using the Phillips #1 screwdriver, remove the three screws from the motherboard..

Step 6



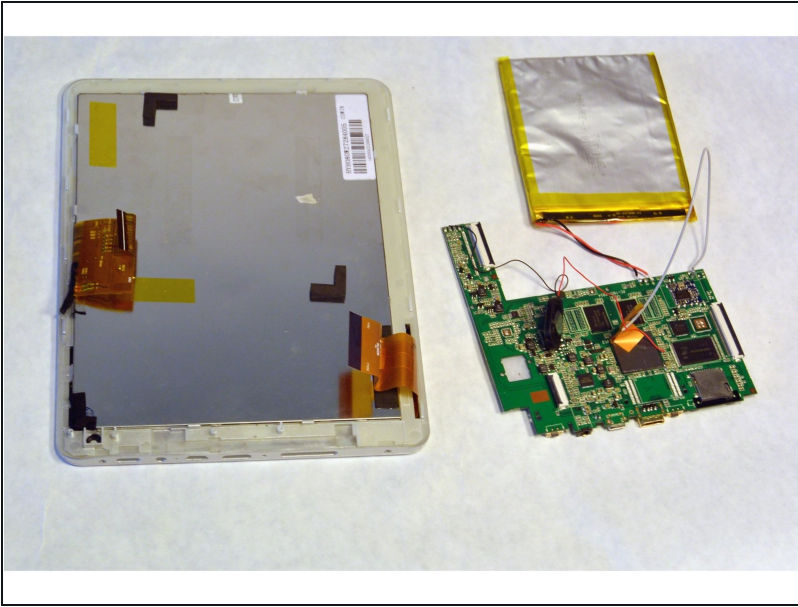
- Open the ZIF connector. Then, remove the ribbon that connects the motherboard and the screen.

Step 7



- Disconnect the other ZIF connector on the opposite side of the motherboard.

Step 8



- Remove the motherboard and now reinsert all connectors into a new motherboard.

⚠ In order to disconnect the battery and speaker wires from the motherboard, soldering is required. Be cautious as the soldering iron is hot.

To reassemble your device, follow these instructions in reverse order.