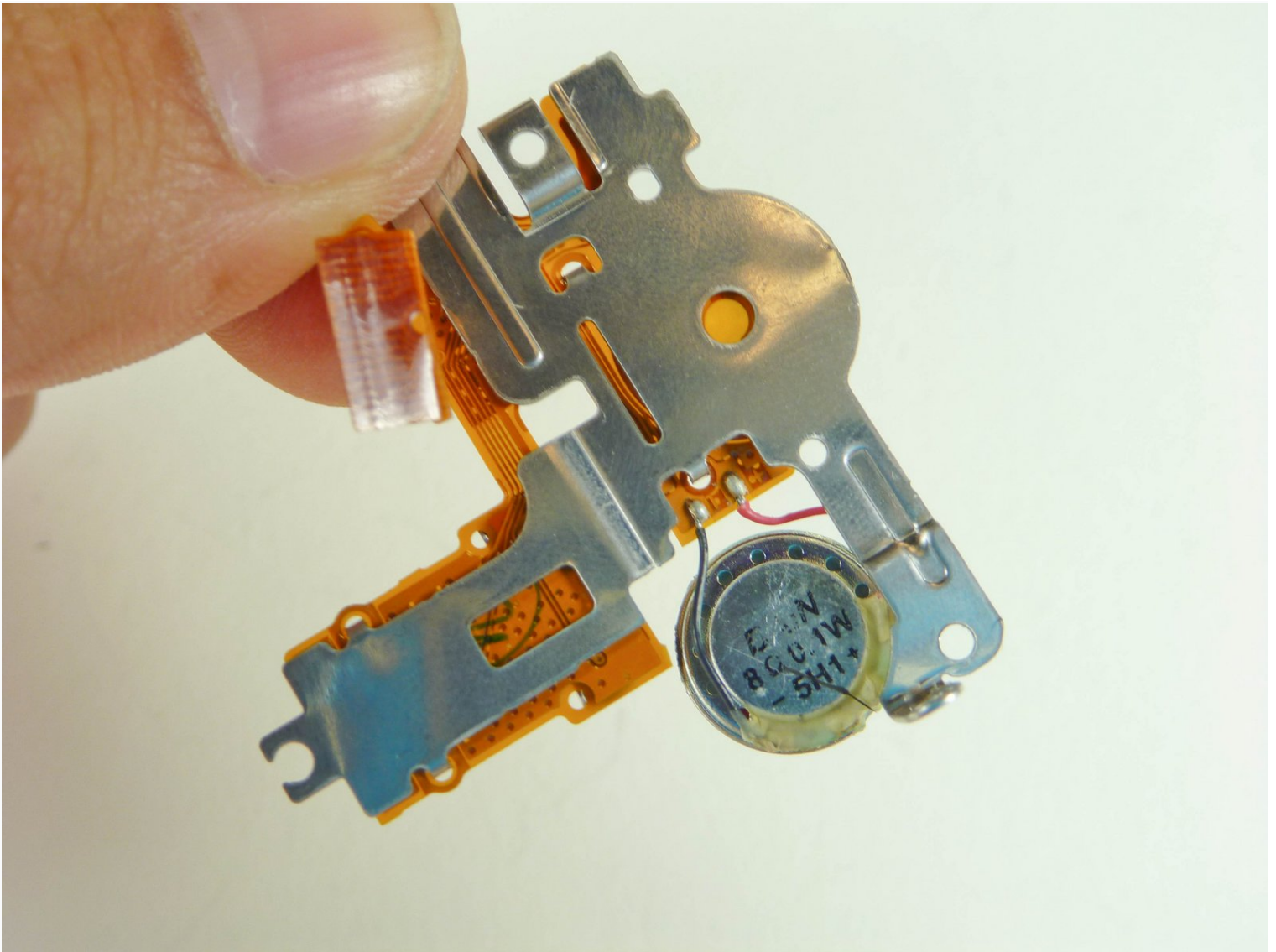




# Canon Powershot A610 Speaker Replacement

This guide will help you remove and replace...

Written By: Matthew Ramirez



# INTRODUCTION

This guide will help you remove and replace your Canon Powershot A610 speaker, bringing back the ability for your camera to use the Sound Memo Function and shutter effects again as long as that was the only underlying issue.

Before beginning this repair, power off the camera, disconnect from the power adapter, and remove the battery.

This repair requires soldering so if you're not experienced, ask for assistance and take a look at the [How to Solder and Desolder Connections](#)

for more information.

---

## TOOLS:

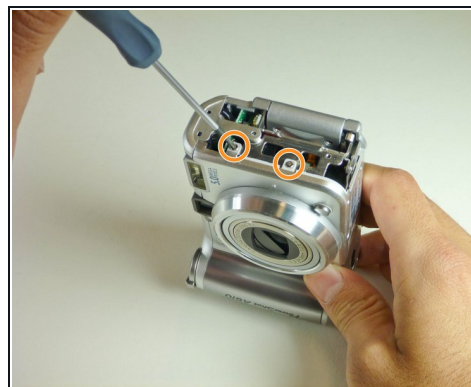
Phillips #00 Screwdriver (1)

Spudger (1)

Soldering Iron 60w Hakko 503F (1)

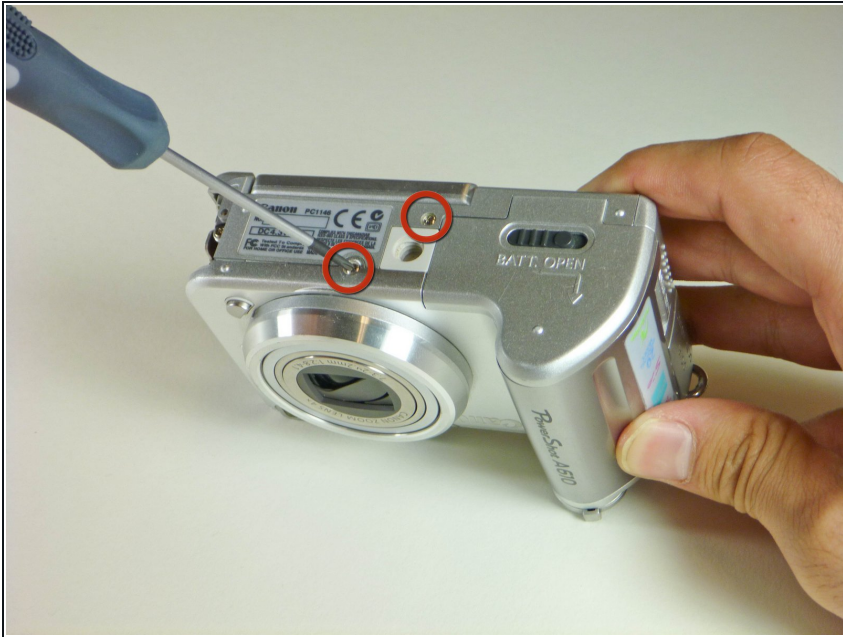
---

## Step 1 — Speaker



- Remove the three screws attaching the side panel using a Phillips #00 screwdriver.
- Remove the side paneling from the camera.
- Remove the two remaining screws attached to the frame of the camera.

## Step 2



- Remove the two screws on the bottom panel of the camera.

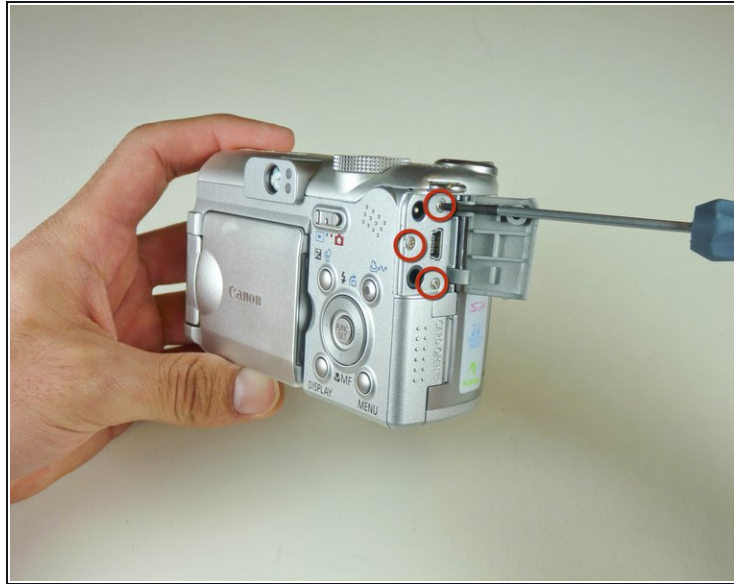
## Step 3



- Open the battery cover.
- Remove the four screws inside.
- ❗ One screw is located on the top side of the bottom cover. The remaining three screws are located at the bottom of the battery compartment.
- Close the battery cover.



## Step 4



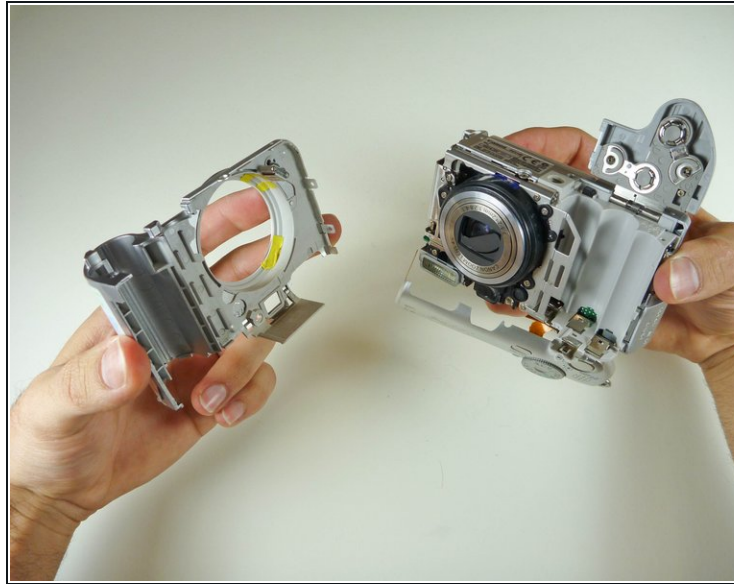
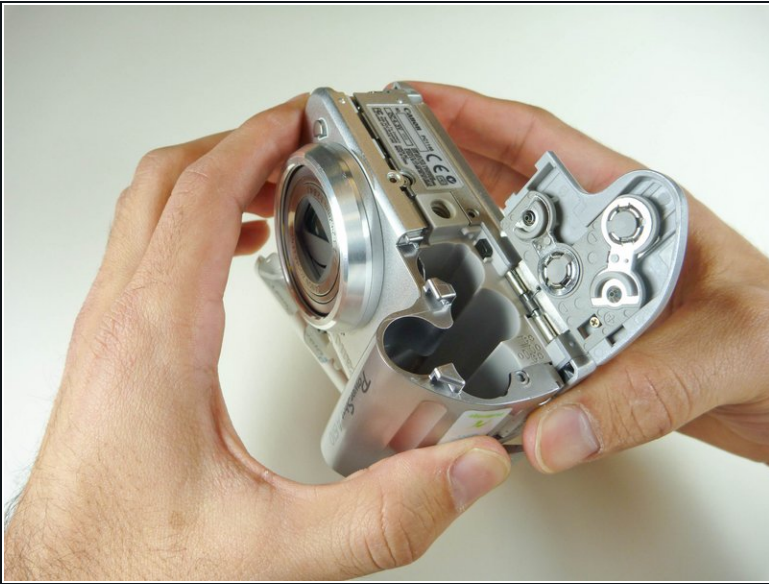
- Open the "DIGITAL AV OUT" door on the camera.
- Remove the three screws.
- Remove the door from the camera.

## Step 5



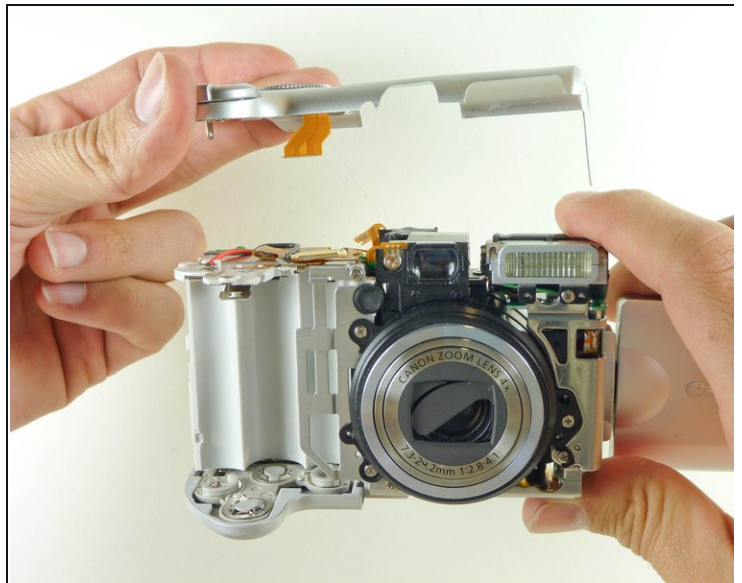
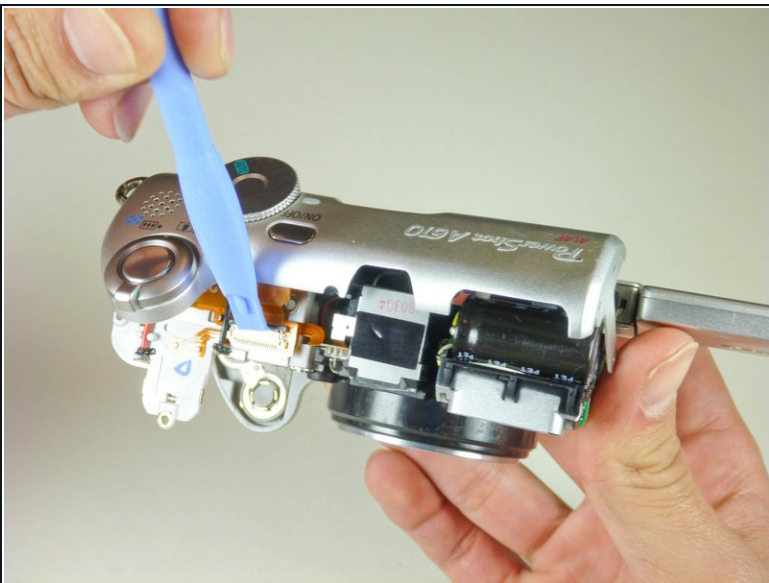
- Gripping the sides of the top cover, gently pull apart the top cover from the camera.
- ⓘ The top cover does not completely detach.

## Step 6



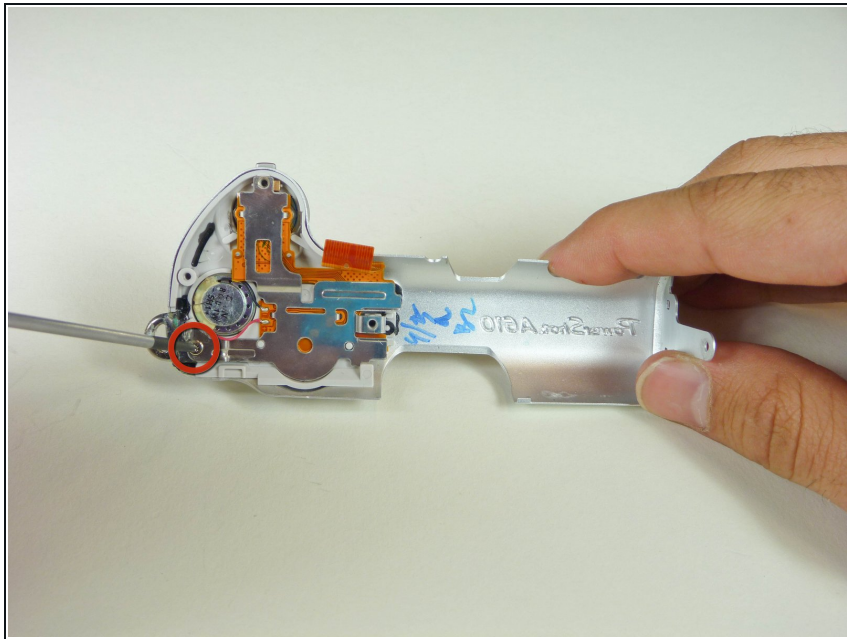
- Open the battery cover.
- Gently pull apart the front cover from the camera.
- ⓘ This may require some force. Be careful not to break the plastic.

## Step 7



- Using an opening tool, push the black attachment away from the white connection piece to detach the connector ribbon.

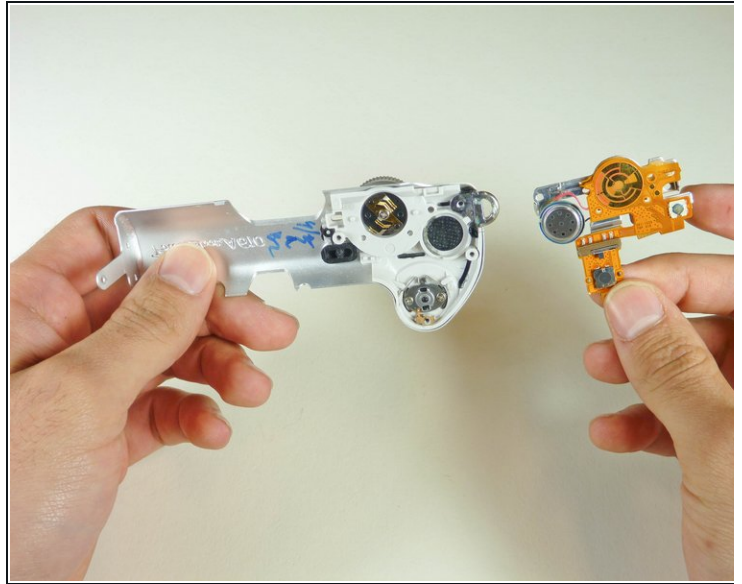
## Step 8



- Remove the 3 mm screw holding the metal frame.

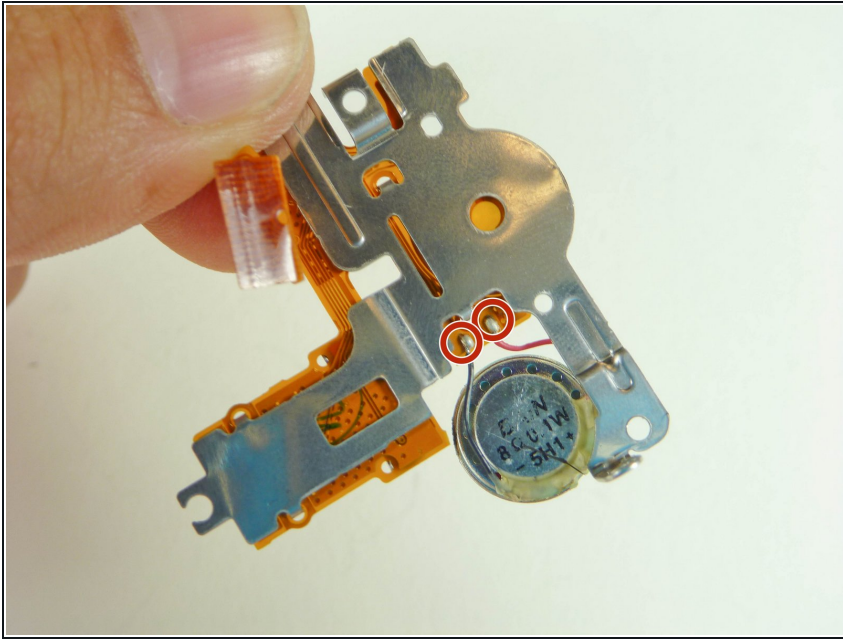


## Step 9



- Use an unfolded paper clip to push the speaker from the top of the casing out towards the bottom.
- Use a bit of force as the speaker is glued into the top casing.
- ⓘ There is a soft fabric speaker cover separating the speaker from the casing. Make sure not to remove it from its position in the housing.

## Step 10



- Desolder the speaker at the two solder points and reattach the new speaker.

To reassemble your device, follow these instructions in reverse order.