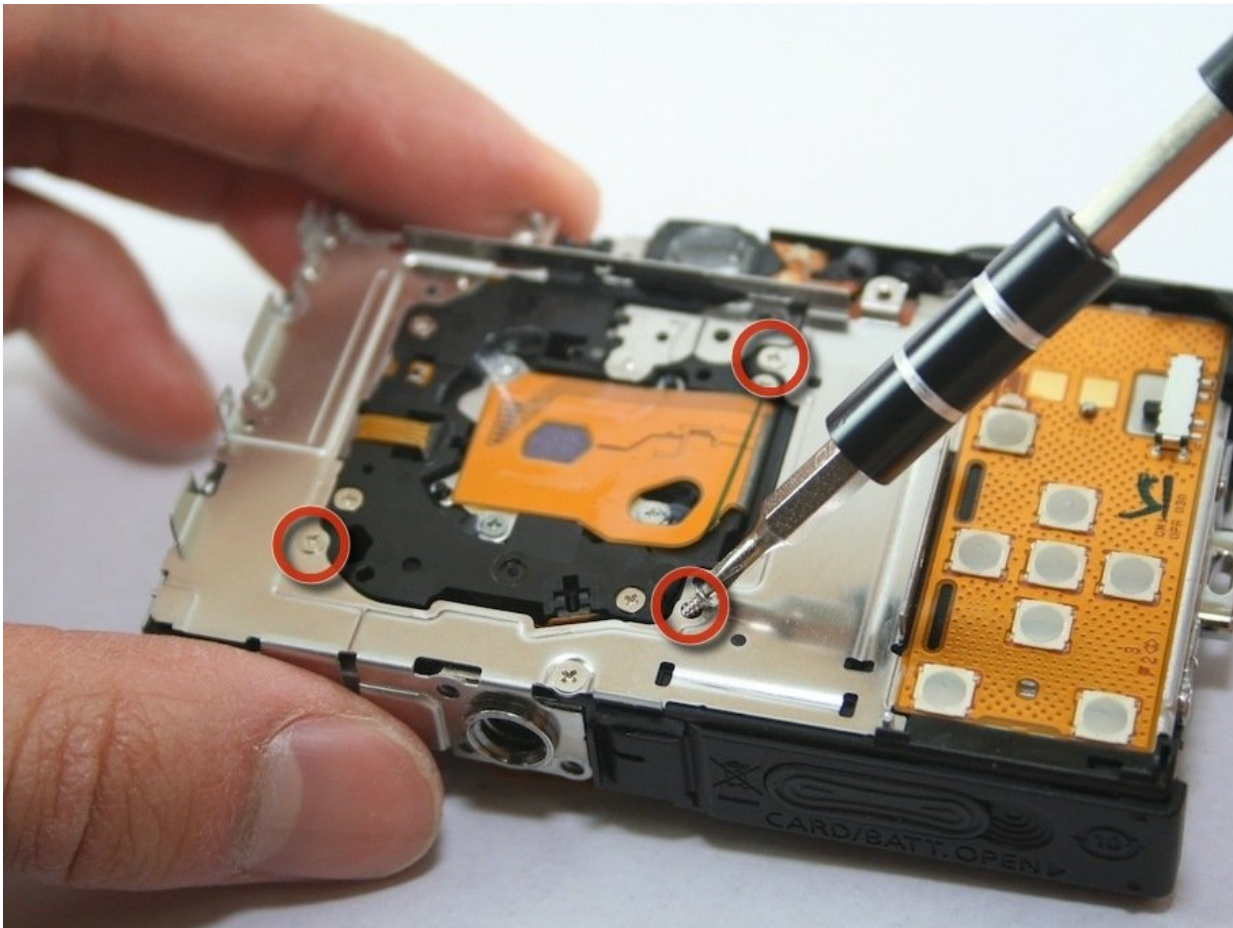




# Disassembling Canon PowerShot SD1100 IS Camera Lens

Use this guide to remove the camera lens piece.

Written By: Tyler Grossheim



# INTRODUCTION

Use this guide to remove the camera lens piece.

---

## TOOLS:

[Phillips #00 Screwdriver](#) (1)

---

### Step 1 — Front and Rear Cover



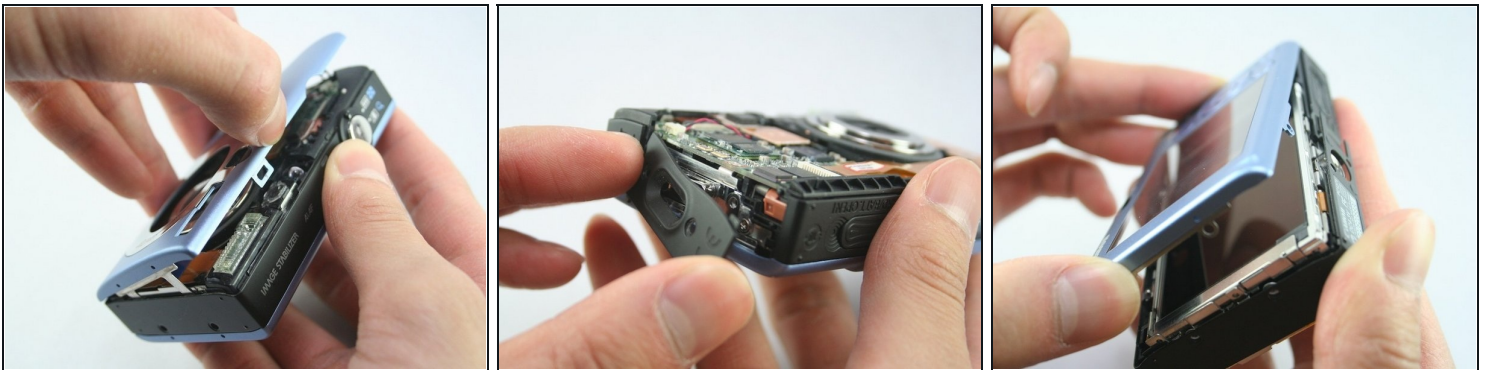
- Remove wrist strap and battery.

## Step 2



- Remove 2 screws from each side of the camera (4 total, 0.102 in).
  - Remove 2 screws from the bottom on the camera (0.138 in).
- ⚠ Do not mix the 4 side screws with the 2 bottoms ones; they are different sizes.

## Step 3



- Gently pull off the front cover.
- ① The plate on the side should come off.
- Gently pull off the back cover.

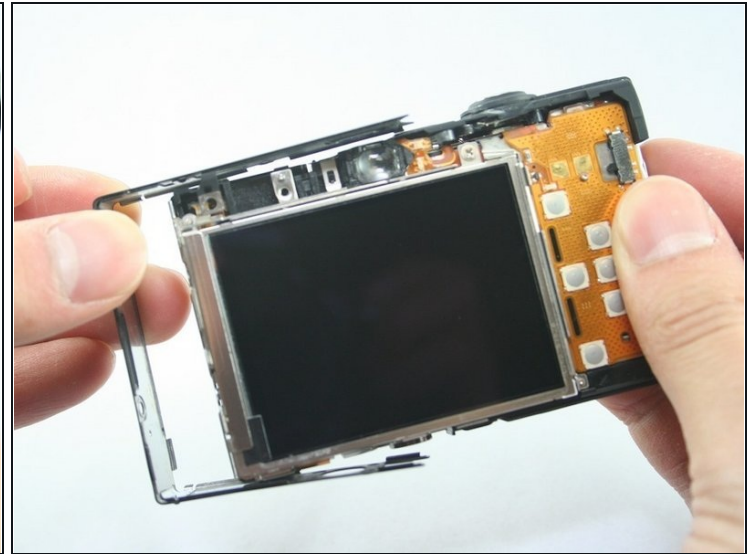
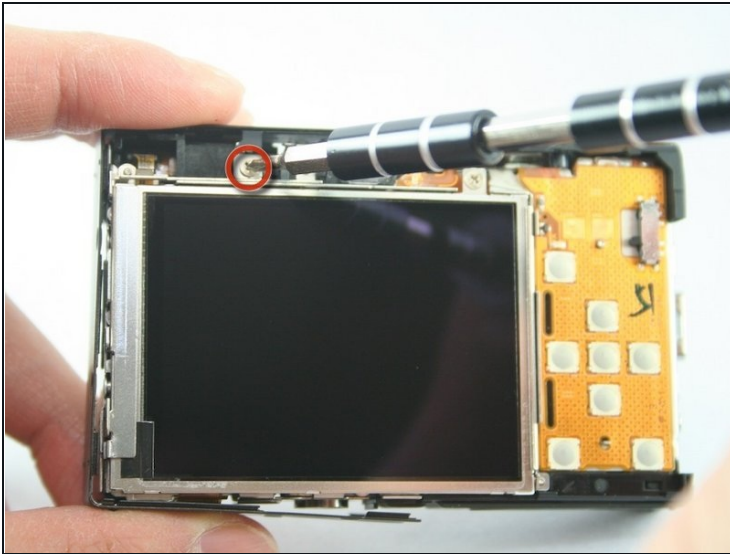


## Step 4



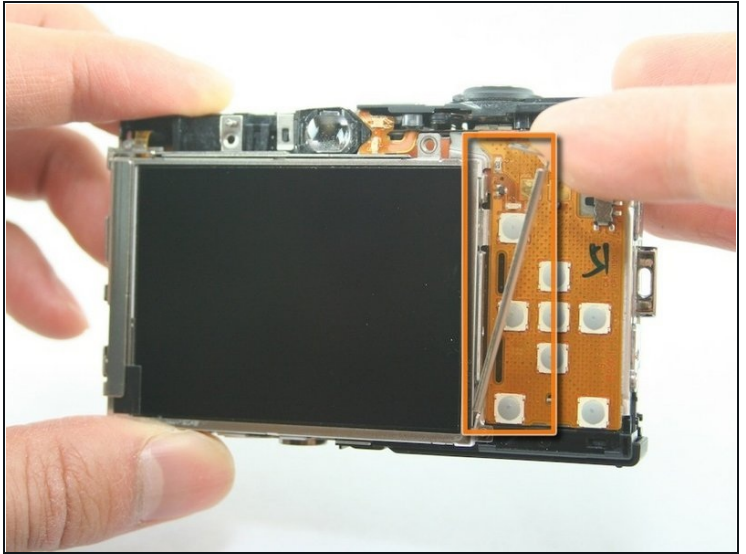
- The cases should now be removed.

## Step 5 — LCD screen



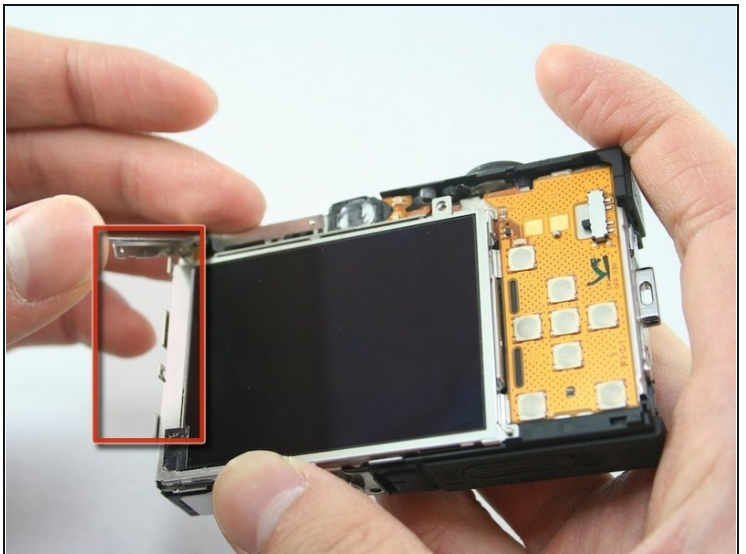
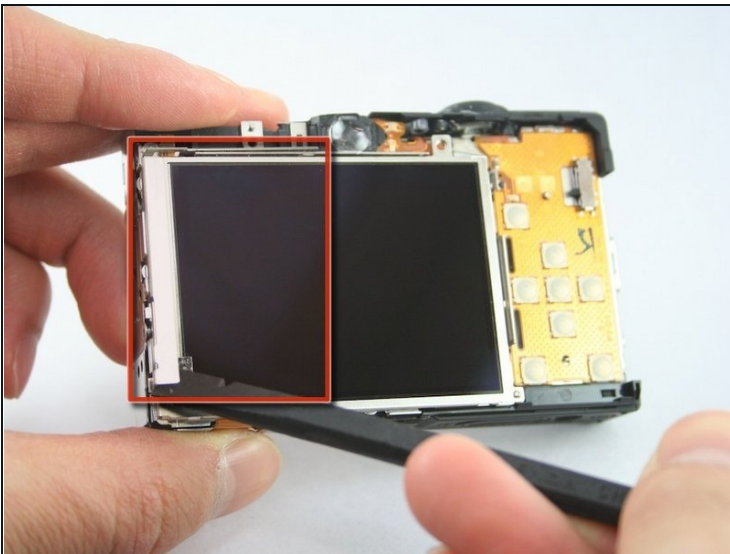
- Remove the top-left screw above the LCD screen (0.100 in).
- Remove the C-shaped plate from the side of the LCD screen.

## Step 6



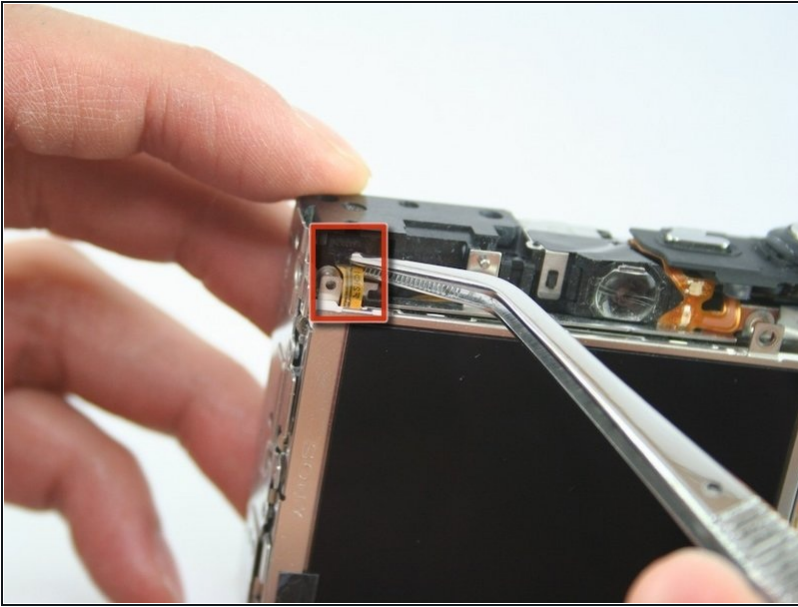
- Remove the screw from the top-right of the LCD screen (0.098 in).
- Remove the L-shaped bar from the right of the LCD screen.

## Step 7



- Use the spudger to remove the L-shaped bar from the left-side of the LCD screen.

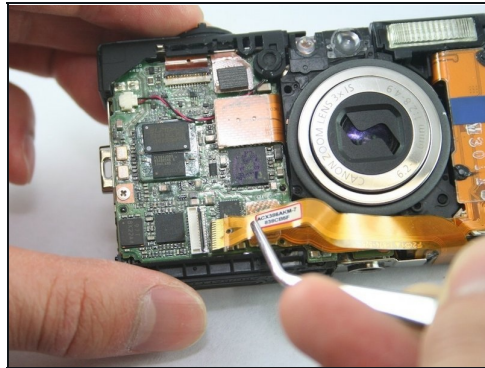
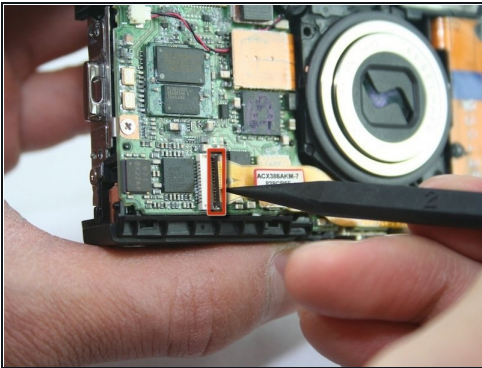
## Step 8



- Use [tweezers](#) to remove the connector ribbon from the top-left corner above the LCD screen.

⚠ Be gentle. This ribbon should stay attached to the screen.

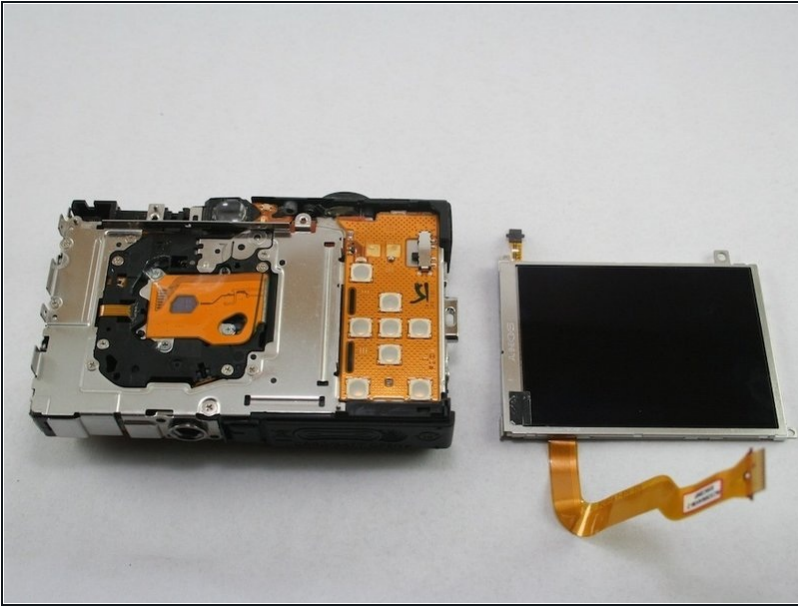
## Step 9



- Use a spudger to lift the connector lock (black flap) at the end of the larger LCD connector ribbon on the front side of the camera.
- Use the tweezers to lift this ribbon.
- Use the tweezers to gently peel this ribbon from the one underneath it.

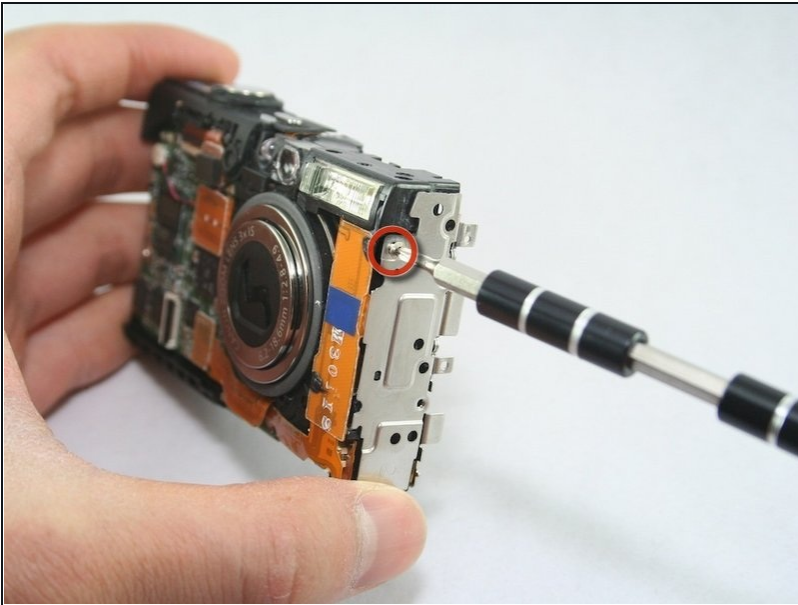


## Step 10



- The LCD screen should now be removed.

## Step 11 — Flash Assembly



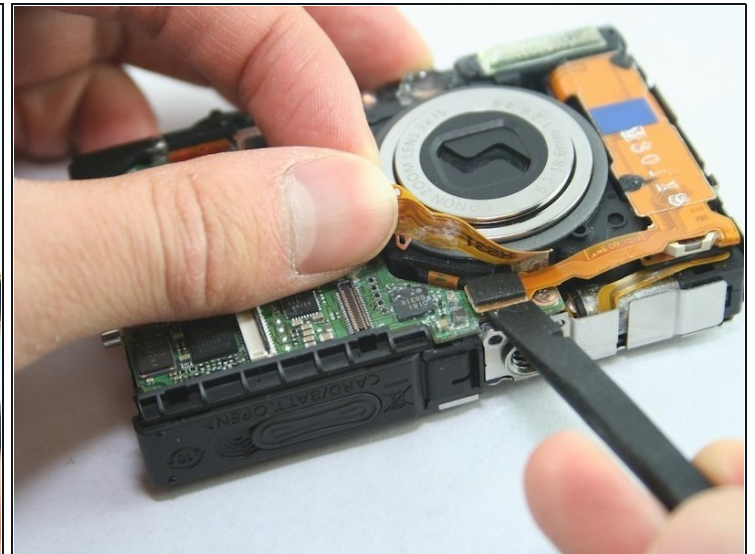
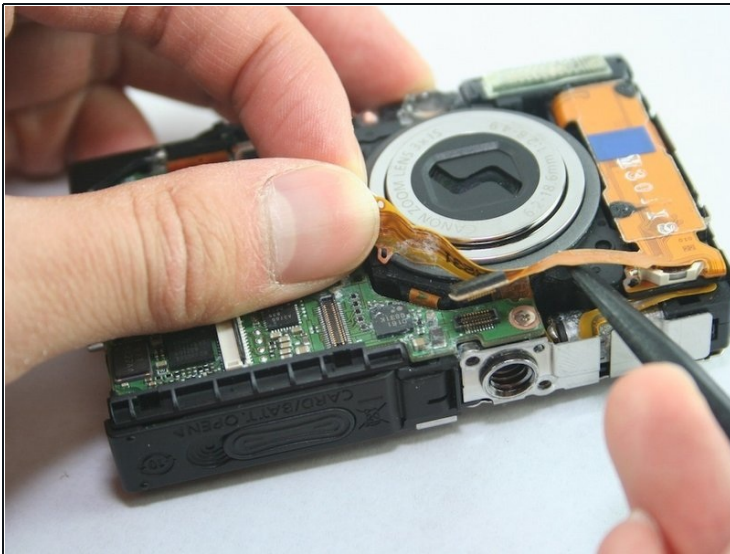
- Remove the screw located on the side of the camera (0.072 in).

## Step 12



- Use the spudger to remove the lens ribbon from the circuit board.
  - Use the spudger to lift the ribbon.
- ① This ribbon is connected to the lens, but the flash assembly ribbon is underneath it.

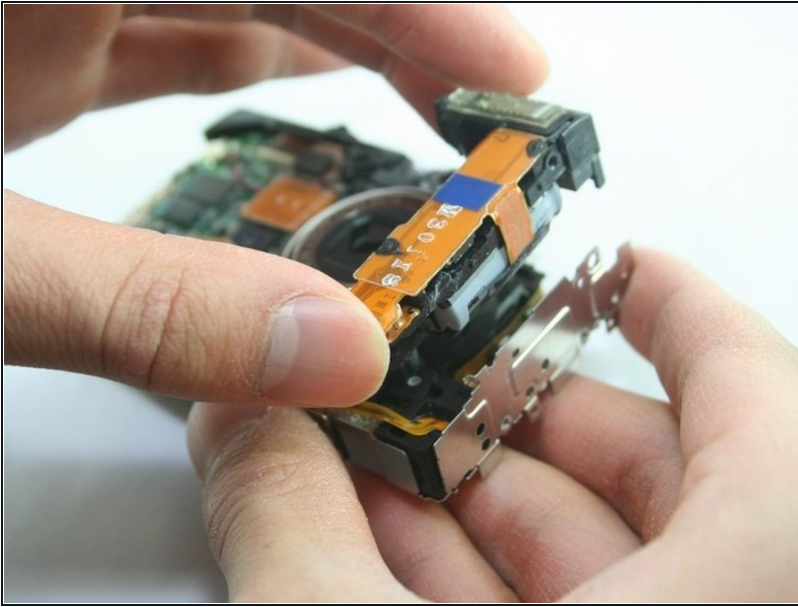
## Step 13



- Disconnect the flash assembly ribbon.
- ① The flash assembly ribbon is located underneath the lens assembly ribbon.



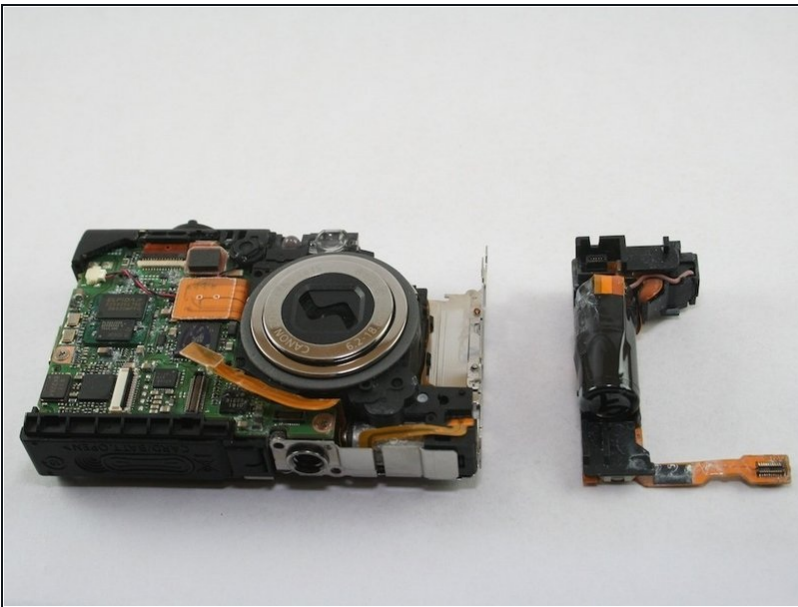
## Step 14



- Remove the flash assembly, which includes the capacitor. If it resists, note the small hook on the right side near the bottom.

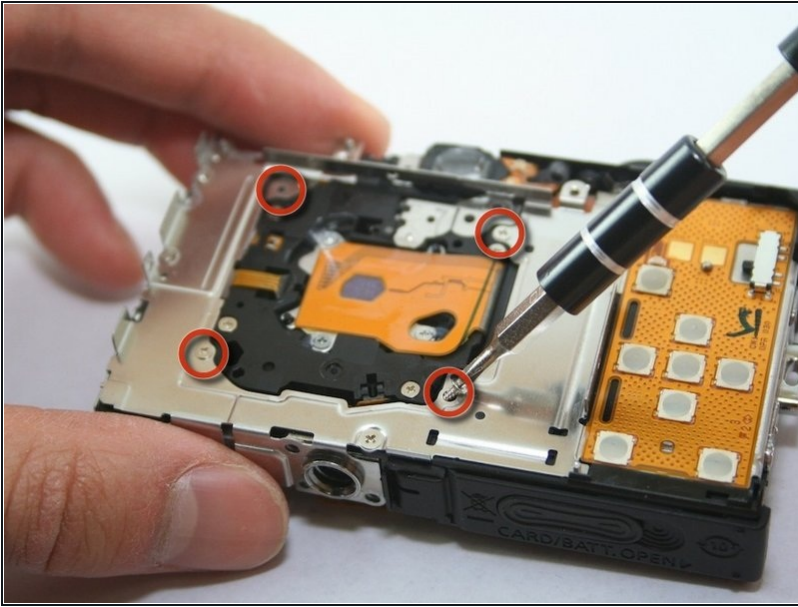
⚠ Be careful when taking out the capacitor. It could shock you.

## Step 15



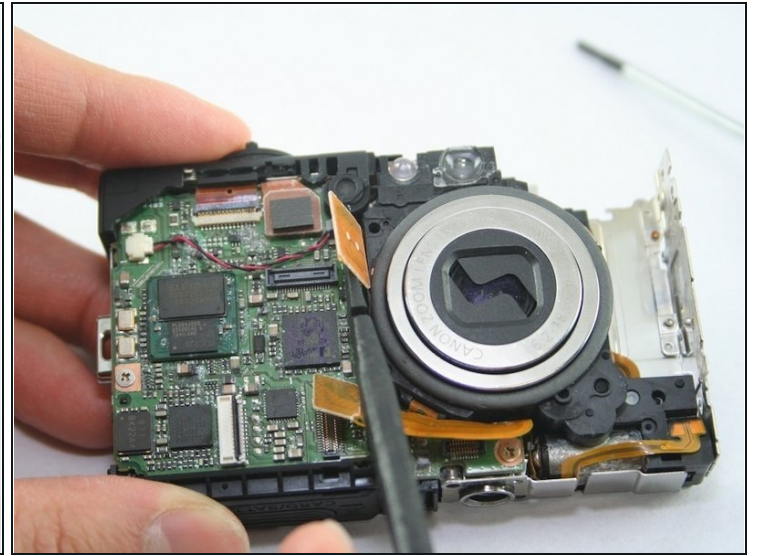
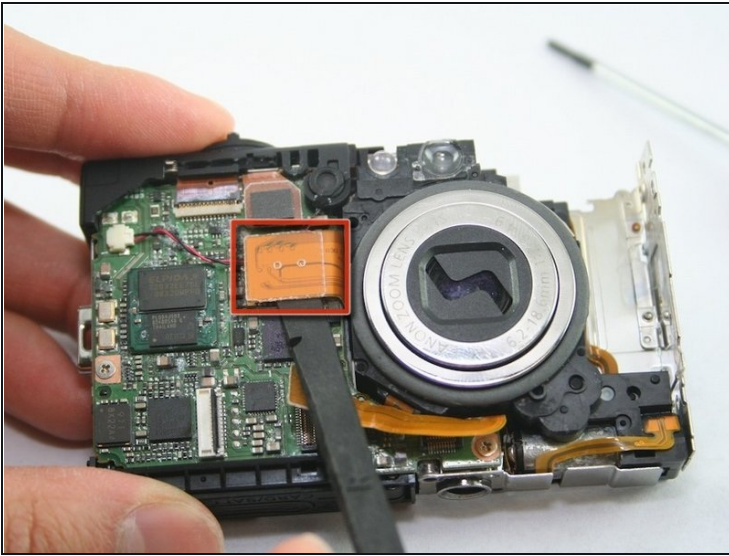
- The capacitor should now be removed.

## Step 16 — Camera Lens



- Remove 4 screws from silver plate (0.106 in).

## Step 17



- Use spudger to lift the second lens ribbon.
- ⓘ Remember the first ribbon was removed while taking out the flash assembly.

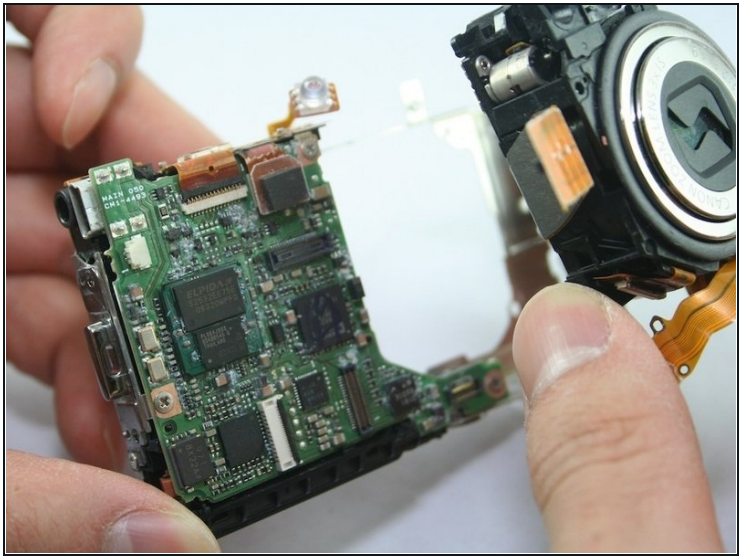
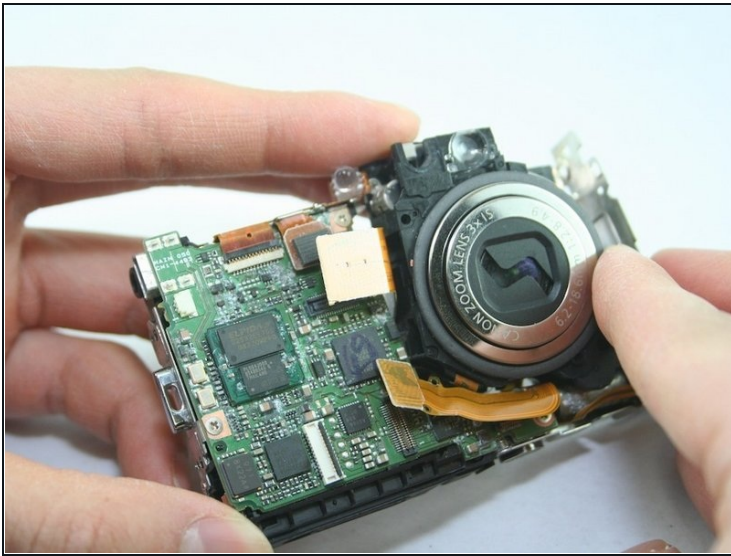


## Step 18



- Use spudger to carefully lift the LED light off the upper-left corner of the lens.

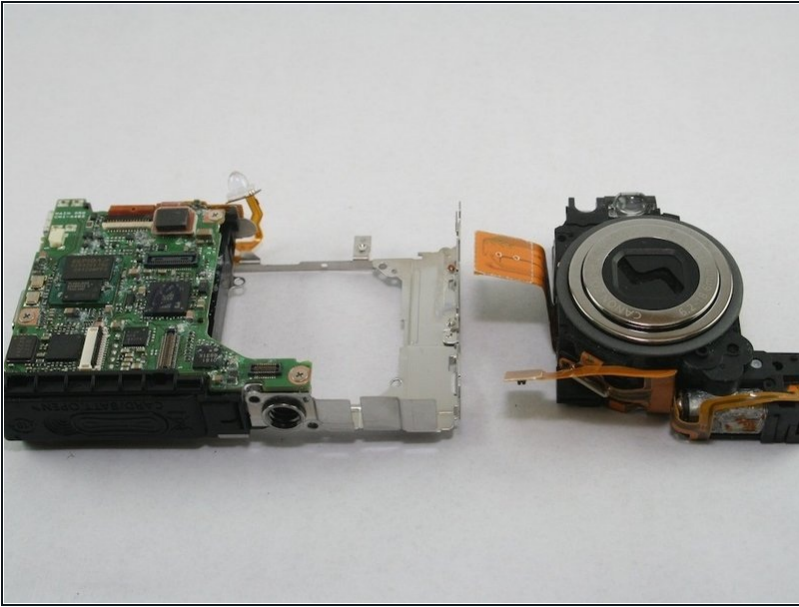
## Step 19



- Remove the lens.



## Step 20



- The camera lens should now be removed.

---

To reassemble your device, follow these instructions in reverse order.