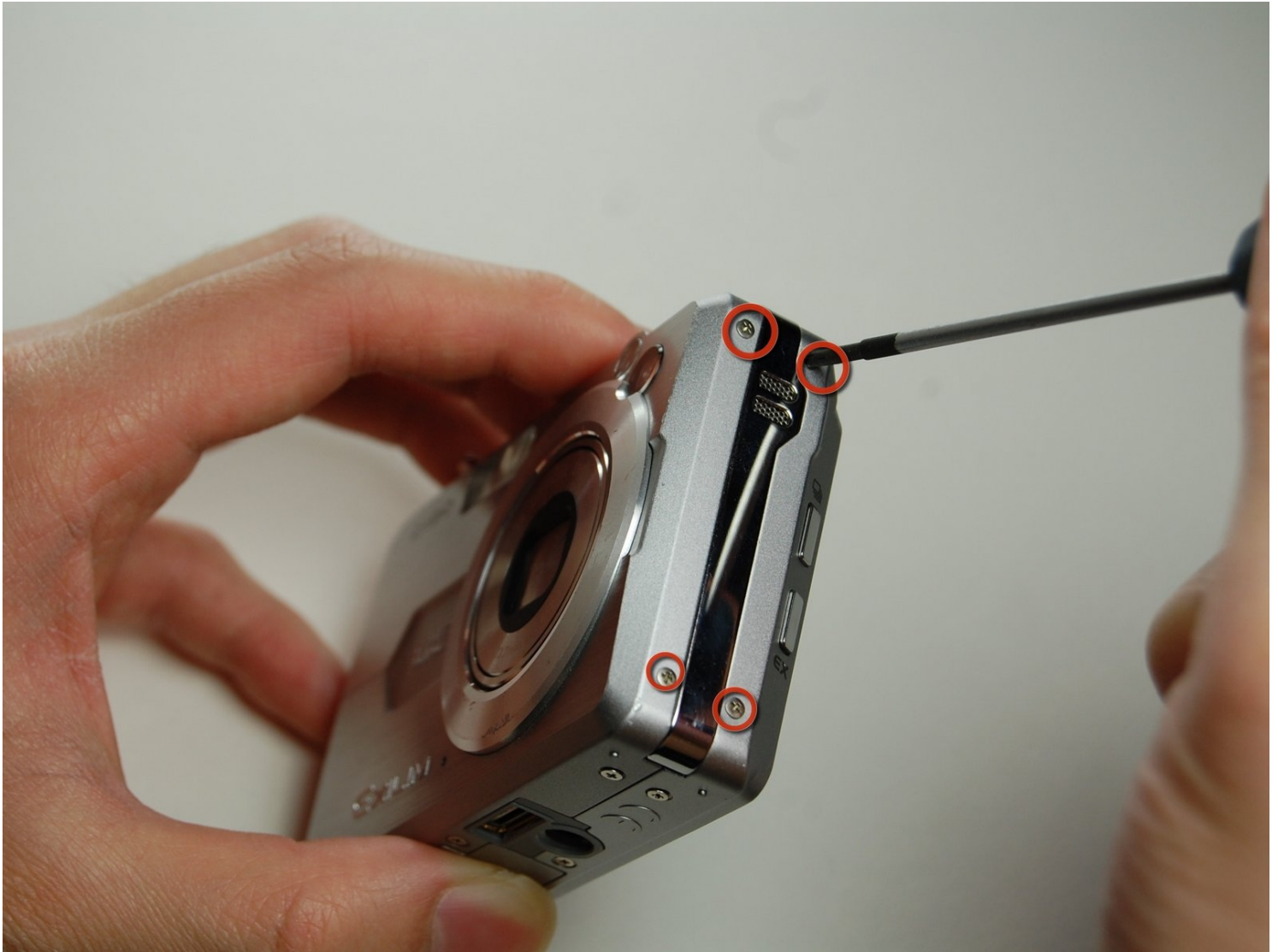




Casio Exilim EX-Z850 Flash Assembly Replacement

Written By: Christian

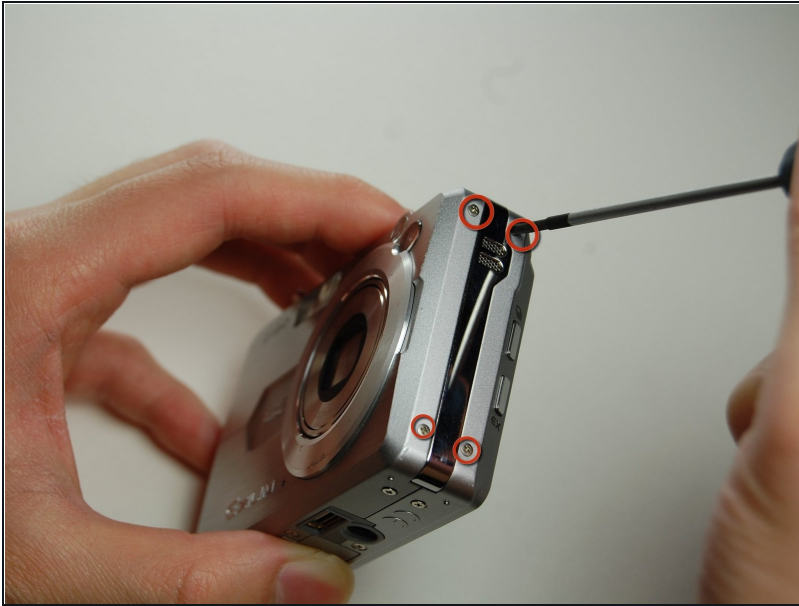


TOOLS:

Phillips #00 Screwdriver (1)

Tweezers (1)

Step 1 — Flash Assembly



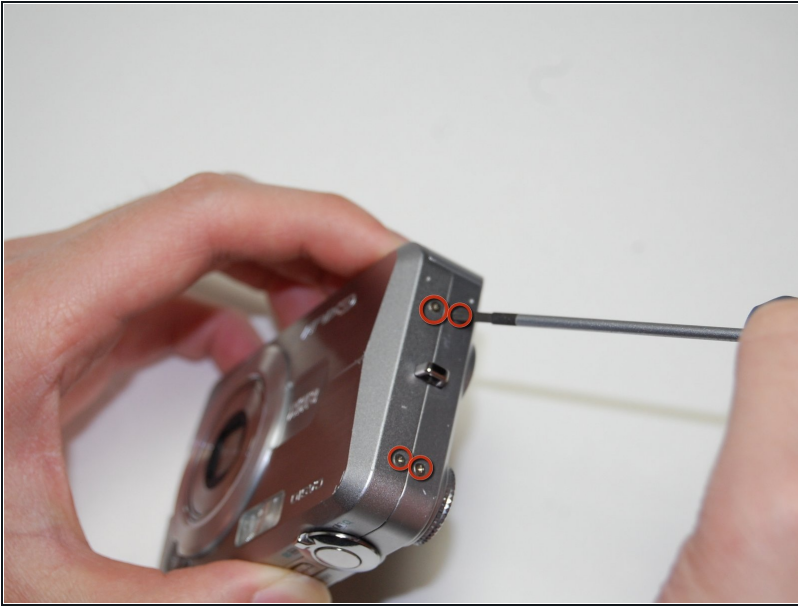
- With your Phillips #00 screwdriver, remove the four screws on the side of the camera.

Step 2



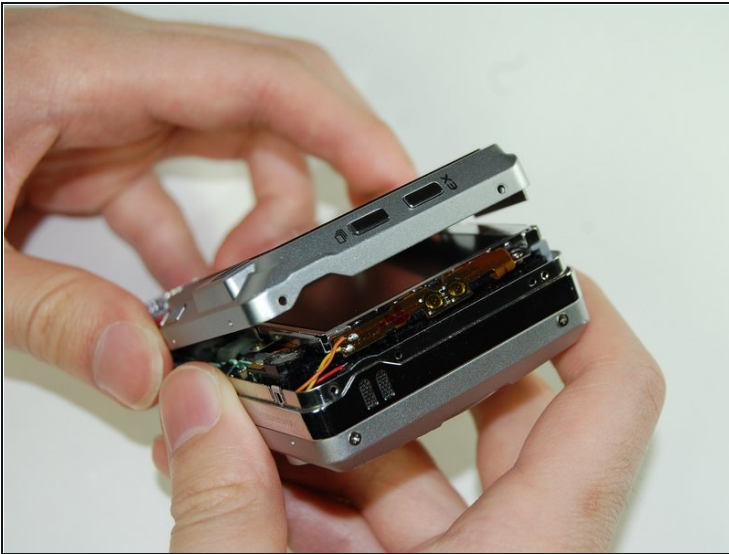
- With a Phillips #00 screwdriver, remove the four screws located on the bottom of the camera.
- ★ The bottom screws are longer than the top screws, so label accordingly for easy reassembly.

Step 3



- With a Phillips #00 screwdriver, remove the four screws on the opposite side of the camera.

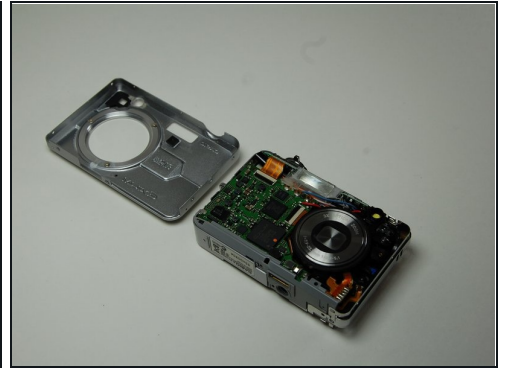
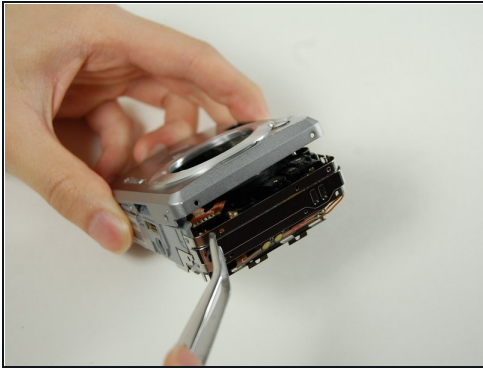
Step 4



- Once all screws have been removed, gently pry open bottom casing.
- With [tweezers](#), carefully remove the ribbon from the LCD screen.
- Set bottom casing aside.

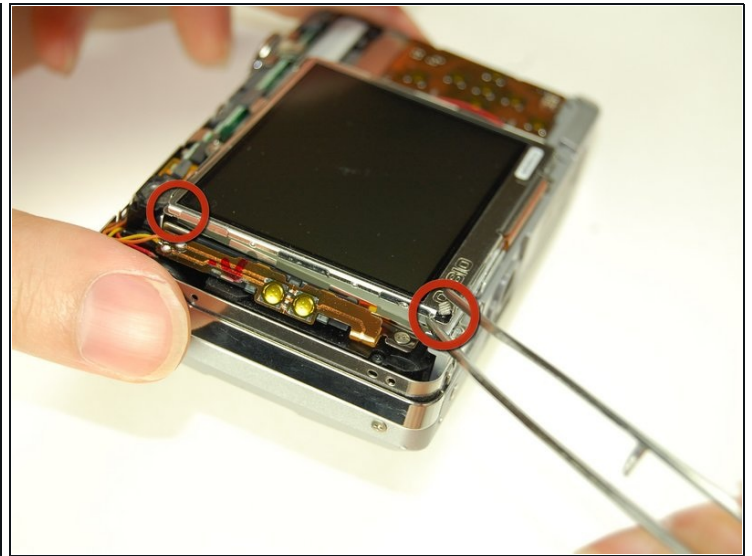
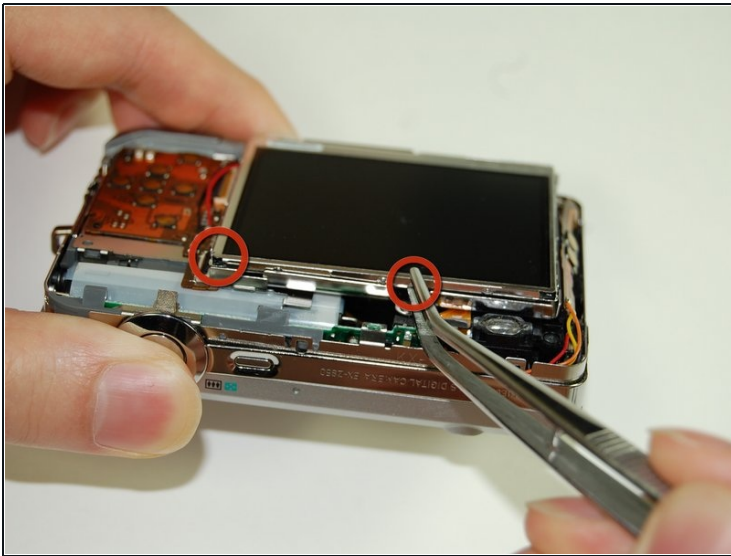
⚠ Prying open the camera from the casing could potentially damage the device, so open the casing slowly.

Step 5



- Using tweezers, gently pry apart the top casing from the camera.
- Set the top casing aside.

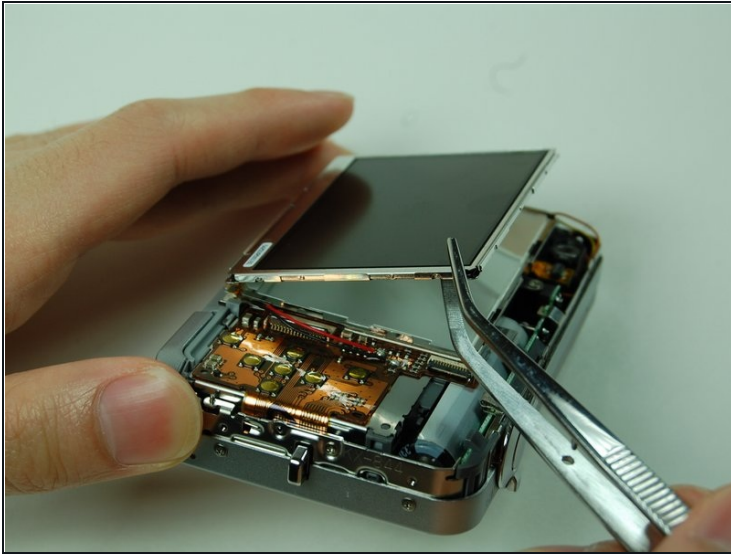
Step 6



- Use tweezers to pry the LCD screen off from the opening.

⚠ The bottom of the LCD screen is attached to the frame by a few pieces of black tape.

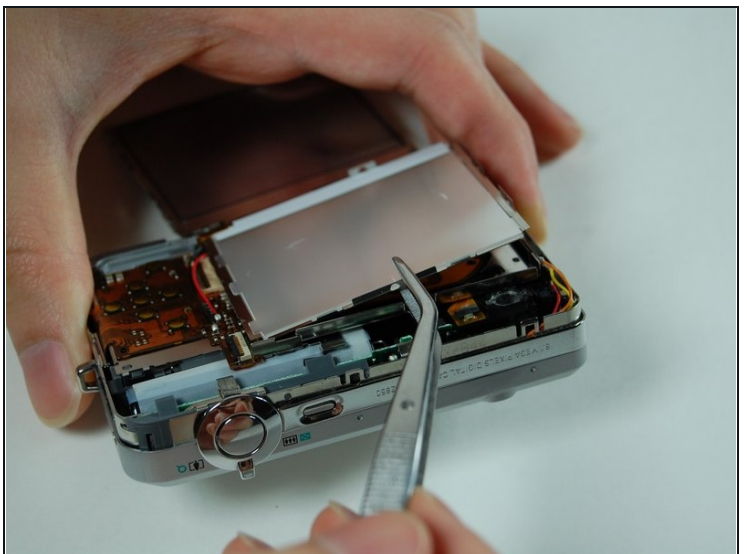
Step 7



- Use tweezers to lift up the LCD screen away from the camera.

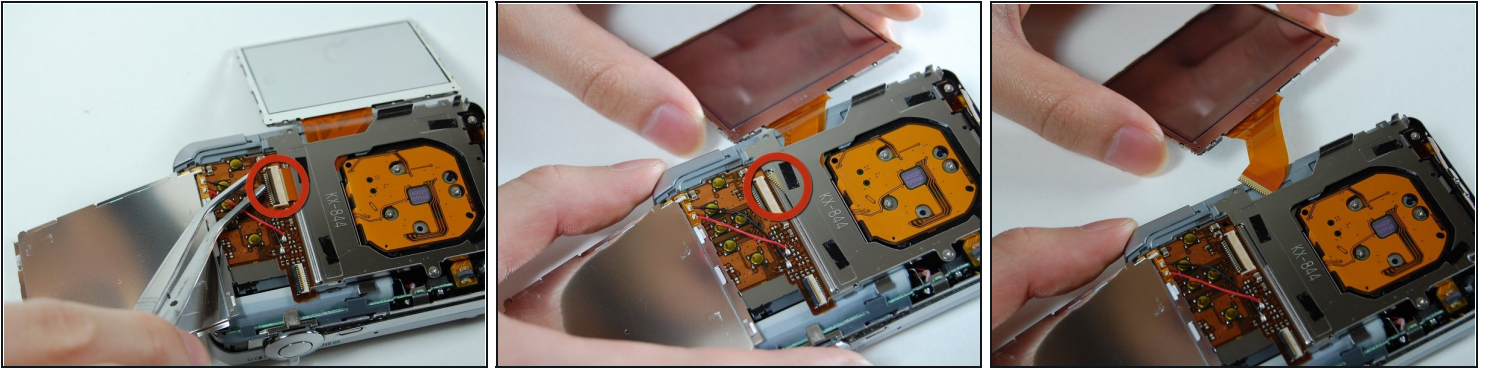
⚠ Moving the screen could potentially damage the wire connecting it to the camera, so move the LCD screen slowly.

Step 8



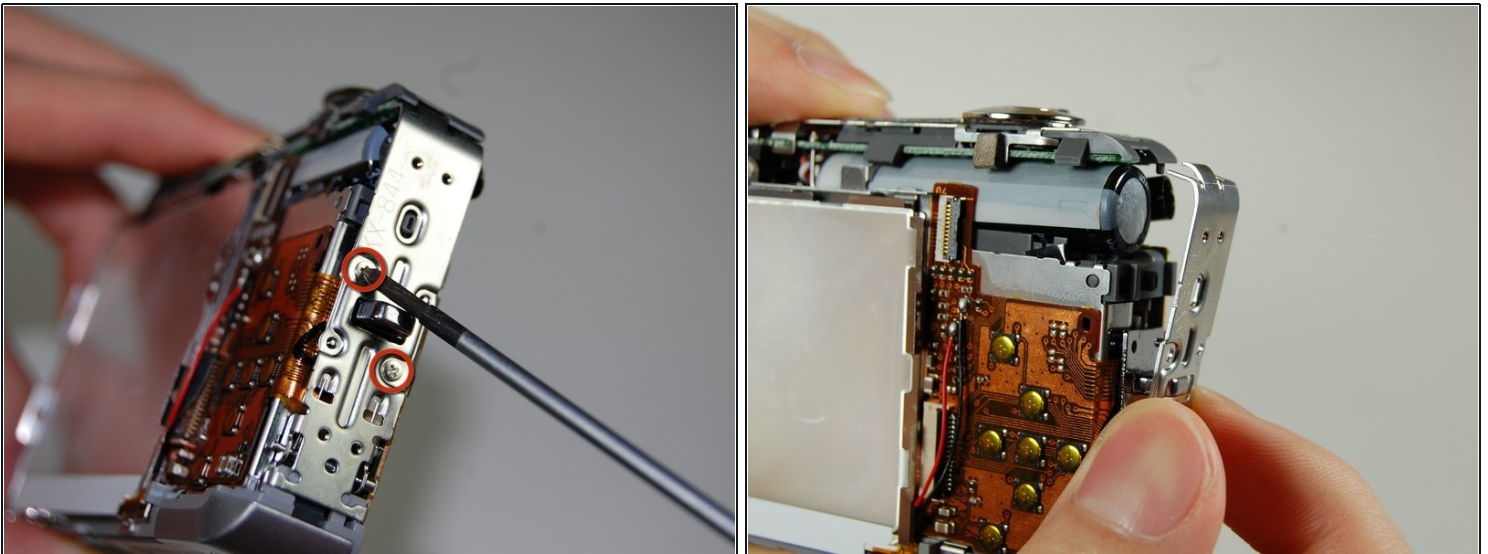
- Use tweezers to slowly pry off LCD casing by lifting and moving it off the camera.

Step 9



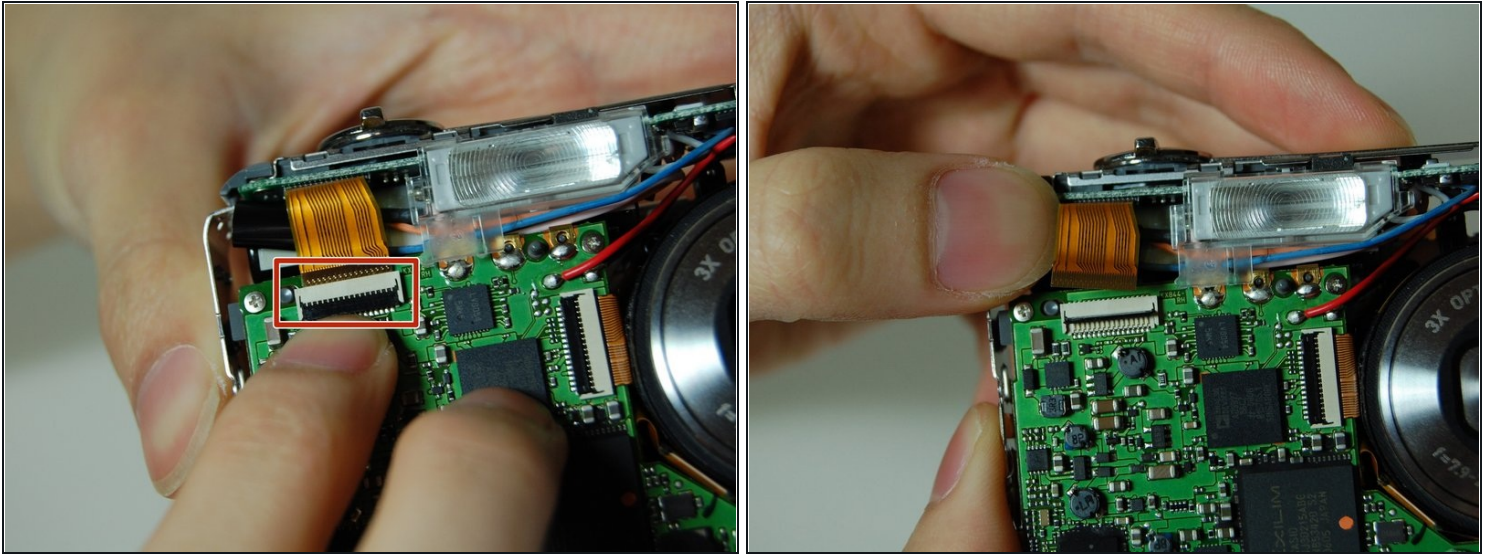
- Use tweezers to flip open the connector holding the ribbon.
- Gently pull out the LCD screen with the ribbon from the camera.

Step 10



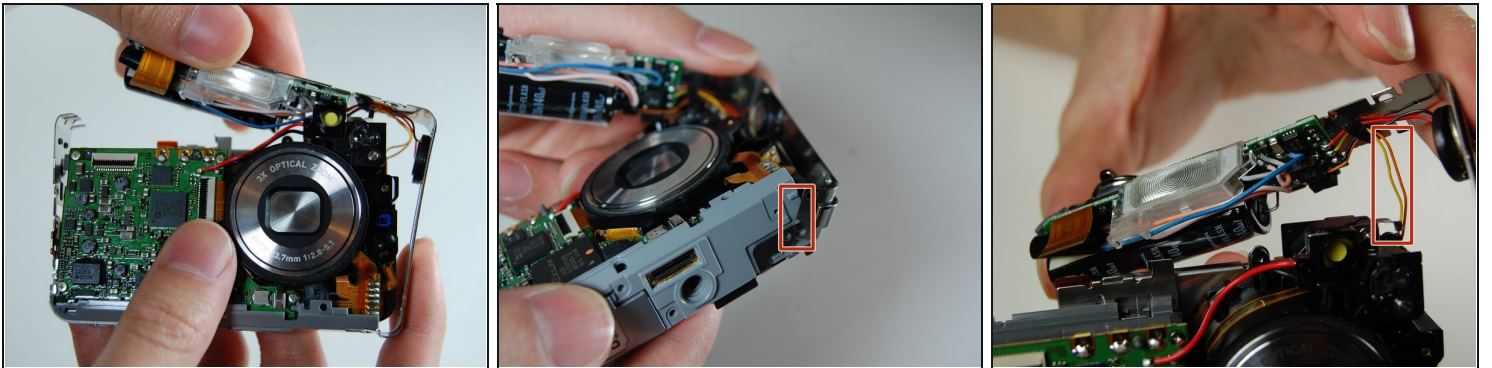
- Using a Phillips #00 screwdriver, remove the two screws on the side where the battery is located.
- Remove the lanyard loop after the screws come off.
- Slowly pull the side casing so it becomes dislocated from the top of the camera frame.

Step 11



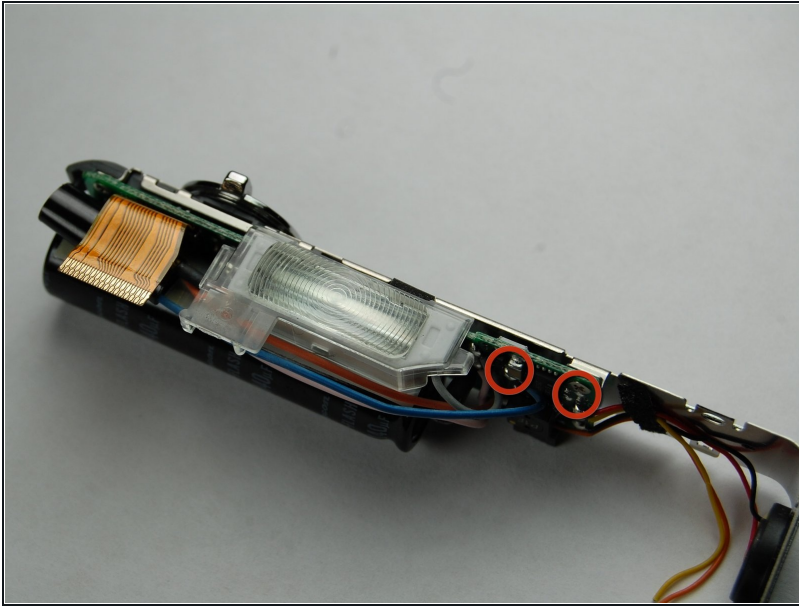
- On the front of the camera, detach the ribbon from the connector.

Step 12



- Carefully remove the L shaped frame from the camera.
 - There is a yellow and orange wire connected to camera. Be careful not to pull them off.
- ① At the bottom of the camera, the L-shaped frame is connected by two plastic bumps and a metal tab.

Step 13



- Using a Phillips #00 screwdriver, remove the two screws on the front of the flash assembly.
- Remove flash assembly, and replace it with a new flash assembly.

To reassemble your device, follow these instructions in reverse order.