



Oster Digital Electric Kettle BVST-EK5967

Thermal Cutoff Fuse Replacement

Replacing this fuse lets the kettle heat water again.

Written By: Scot Henderson



INTRODUCTION

Replacing this fuse lets the kettle heat water again.



TOOLS:

- [Phillips #2 Screwdriver](#) (1)
 - [Tri-point Y4 Screwdriver](#) (1)
 - [Multimeter](#) (1)
-

Step 1 — Thermal Cutoff Fuse



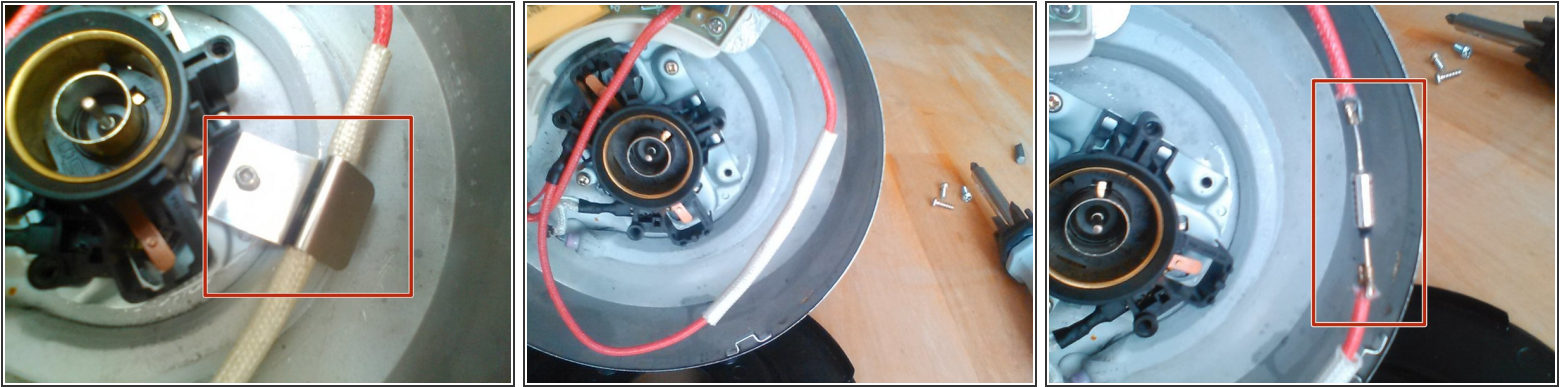
- This is an Oster Digital Electric Kettle

Step 2 — Remove the bottom



- Remove the three screws. They are tri-wing or triangular slotted screws. My set labeled them as number 4.
- Once removed the plastic cover comes right off.

Step 3 — Find the Thermal Cutoff Fuse



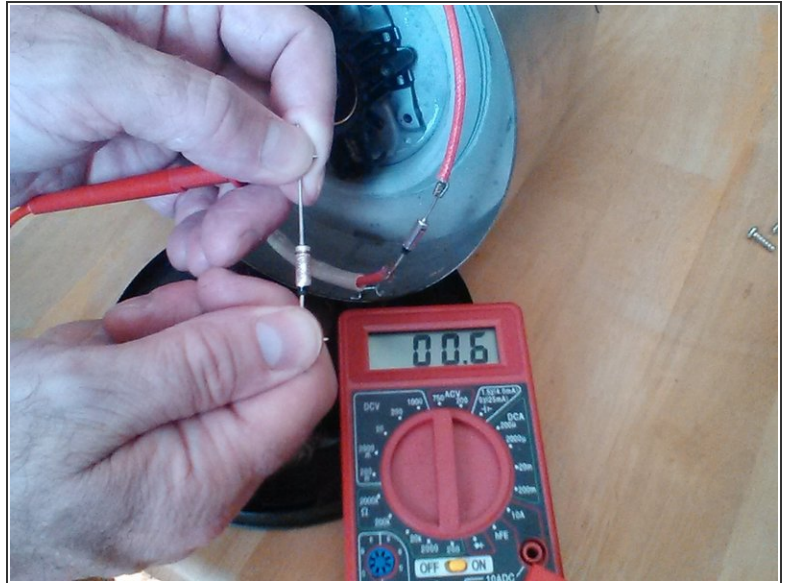
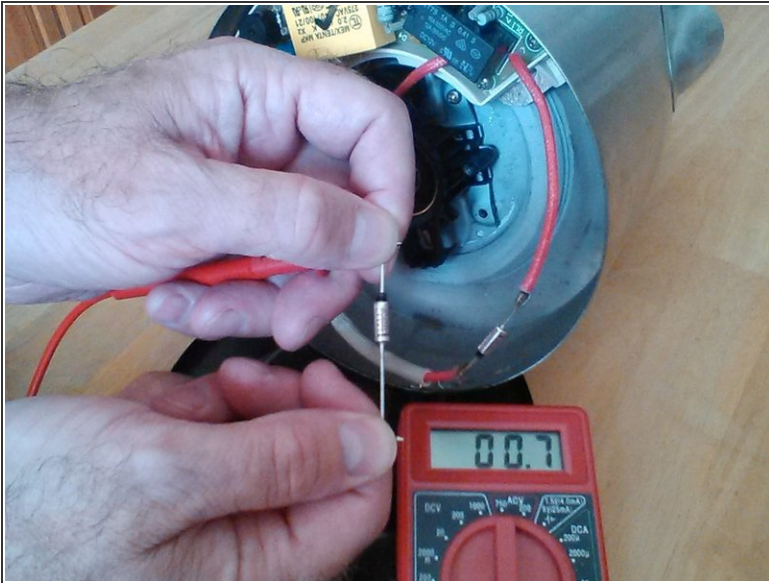
- The Thermal Cutoff Fuse is pressed up against the heat element by a spring clip.
- Remove the screw, a standard number 2 phillips head.
- Slide the fiberglass sleeve down and off the fuse

Step 4 — Test the fuse



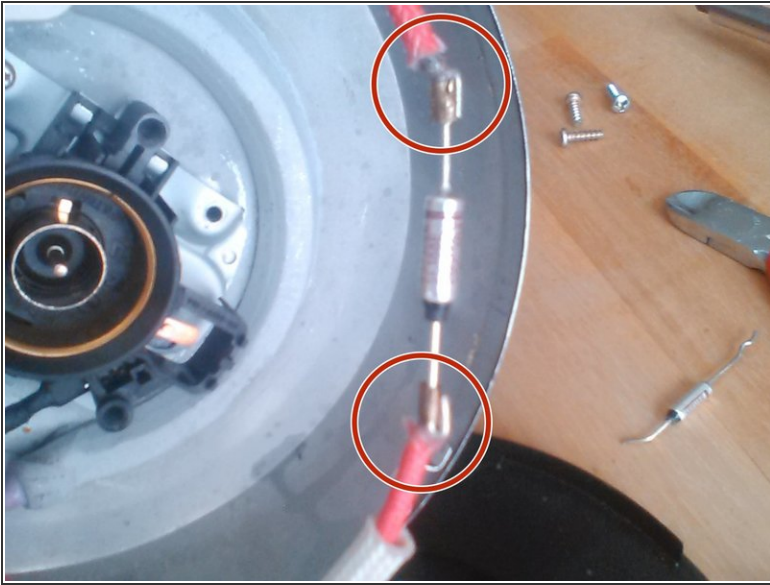
- With ohm meter connected either way the fuse is open. A sure sign that the part is bad.

Step 5 — Verify the new fuse



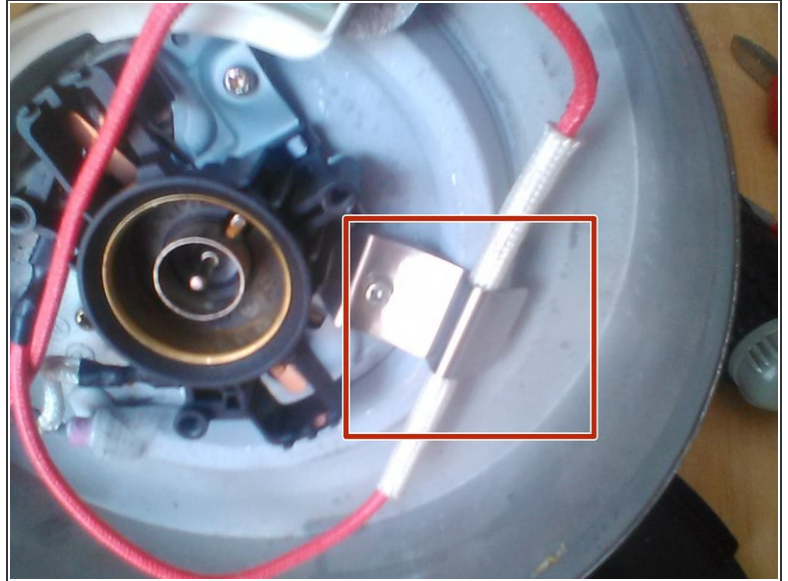
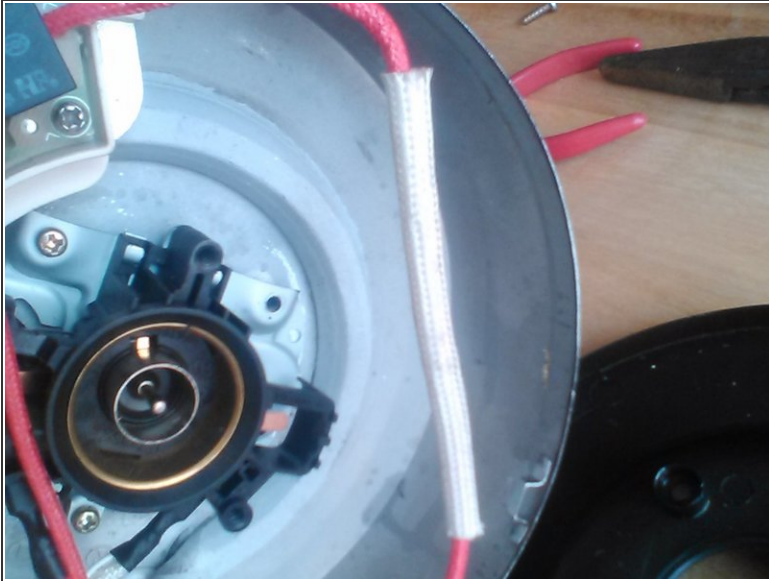
- Testing the new fuse shows that electricity can flow through it.
- I purchased 5x of SF188E 192 10A/250V SEFUSE on ebay. You can just search for whatever is written on the side of yours.

Step 6 — Replace the fuse



- Replace the fuse. The black band is down in this picture.
- The difficult part is that this part is not soldered in, it is held together with a crimp band.
- So one must slowly open the band and then crimp it back on the new fuse.
- I really have no good way of doing this, and it is the most time consuming and frustrating part of the whole repair. Take your time with a pick and pliers and slowly open them and replace the fuse.

Step 7 — Put all back together



- Now just slide the fiberglass sleeve back over the fuse.
- Reattach the spring clip to hold the fuse on the heat element.
- Make sure that the clip is directly over the fuse before tightening.
- Replace the plastic cover and install the three tri-wing screws.

Step 8 — Try it out



- Plug it back in and see if it heats water.

To reassemble your device, follow these instructions in reverse order.