



# Toilet Fill Valve Replacement

Replace the fill valve in a gravity flush toilet.

Written By: Kristen Gismondi



## INTRODUCTION

A failing fill valve can prevent a toilet tank from filling properly, or cause the toilet to fill continuously, wasting excessive amounts of water. Use this guide to replace the fill valve in a gravity flush toilet.



### TOOLS:

- [All-Purpose Sponge](#) (1)
- [Adjustable Wrench](#) (1)

## Step 1 — Tank Lid



- Lift the tank lid up and away from the toilet tank.

## Step 2 — Shutting off the Water Supply to a Toilet



- Shut off the stop valve underneath the toilet by turning it clockwise until it becomes hand tight.

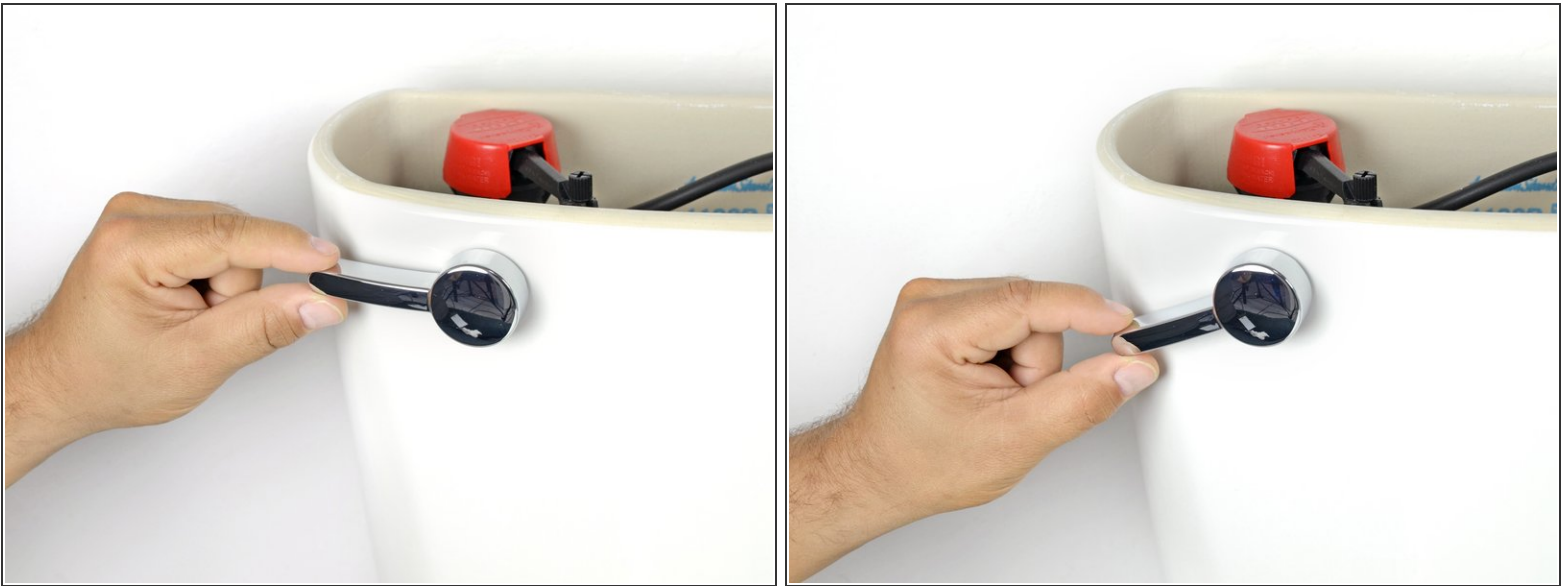
**i** The appearance of this valve may differ from toilet to toilet, but most operate the same. Some valves require multiple turns to stop the water while others only require a quarter turn.

### Step 3 — Refill Tube



- Disconnect the fill valve's rubber refill tube from the top of the overflow tube.

### Step 4 — Draining a Toilet Tank



- Push down the flush lever.
- Hold the lever down until water stops draining from the tank.
- ⓘ A small amount of water will remain in the bottom of the tank.
- ⓘ If the flush lever or pull chain have become disconnected, lift up the toilet flapper to drain the tank.



## Step 5 — Sponge Drying a Toilet Tank



- Use a sponge to soak up and remove any remaining water from the toilet tank.
- Periodically squeeze the excess water from the sponge.

## Step 6 — Supply Tube



- Place a bucket under the supply tube to catch any dripping water.
- Turn the coupling nut on the supply tube clockwise until it releases from the threaded shank on the bottom of the tank.

## Step 7 — Fill Valve



- Using an adjustable wrench, turn the locknut on the threaded shank counter-clockwise until it becomes loose.

## Step 8



- Turn the locknut counter-clockwise until it releases from the threaded shank.

## Step 9



- Lift the entire fill valve out of the tank.

- ☑ When installing a new valve, be sure to adjust the float so that the water line stops one inch below the overflow tube.

To reassemble your device, follow these instructions in reverse order.