

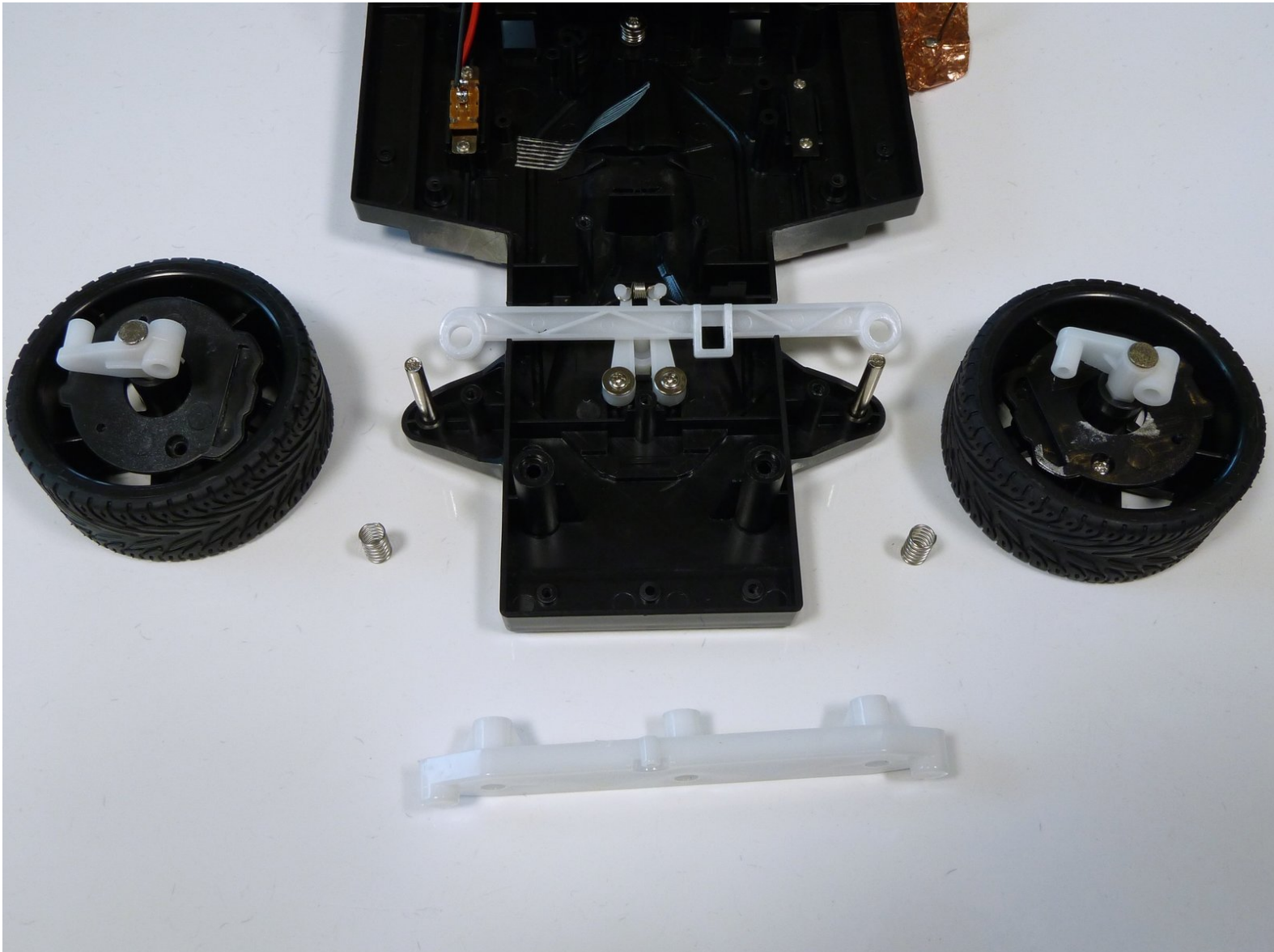


# X-street Lamborghini Murcielago LP670-4 SV

## Wheel Replacement

Replace the wheel to ensure maximum traction on the race track.

Written By: Liam Martinez



---

## INTRODUCTION

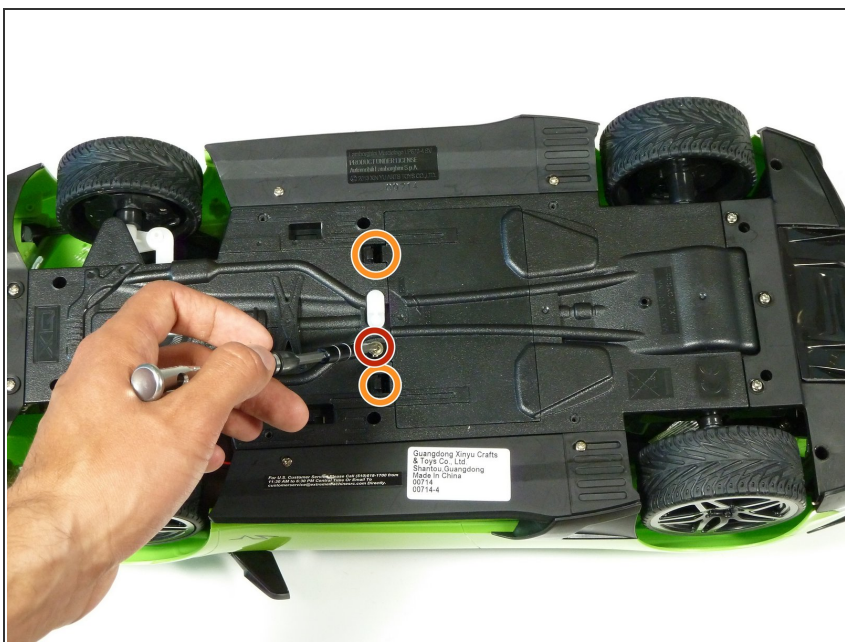
The wheels connect the car to the ground. Any fault in these could hinder the car performance and replacing them would serve to improve the car.

---

### TOOLS:

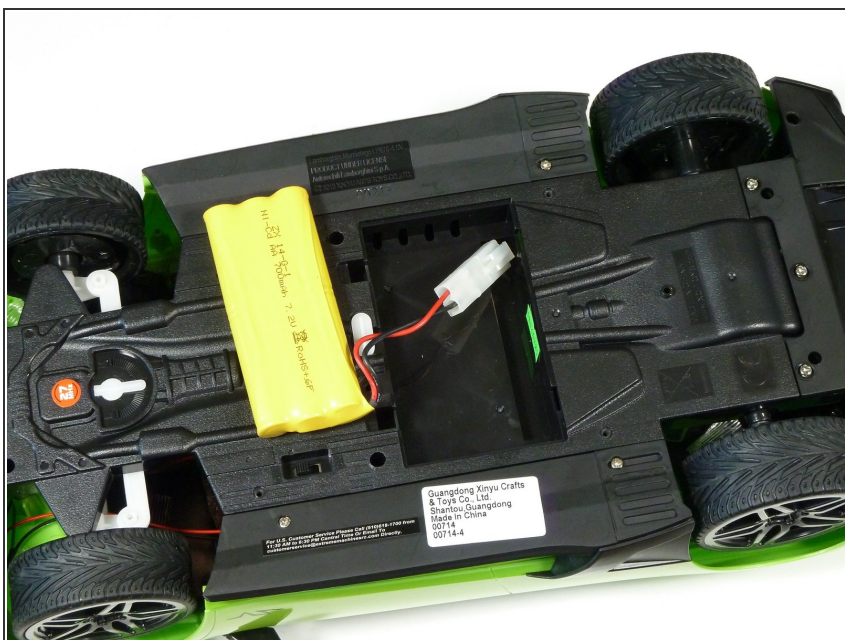
- [Phillips #00 Screwdriver](#) (1)
-

## Step 1 — Battery



- Unscrew the two 2.5mm Phillips #00 screws from the middle of the car.
- Unclip the two clips to remove the battery cover.

## Step 2



- Unplug the battery by pushing on the clip.

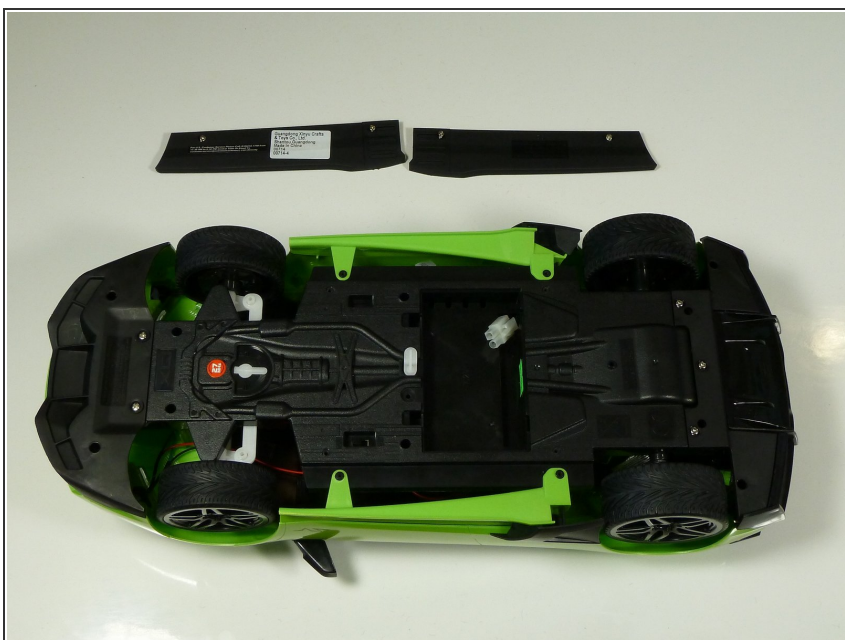


## Step 3 — Underbody



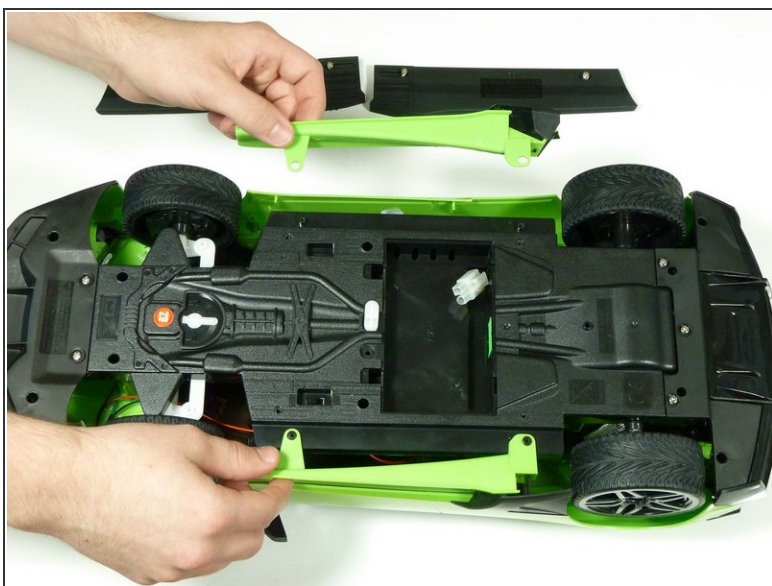
- Unscrew the two 2.5mm Phillips #00 screws from each side

## Step 4



- Remove the side skirt covers on each side of the car.

## Step 5



- Lift up and remove the two side skirts.

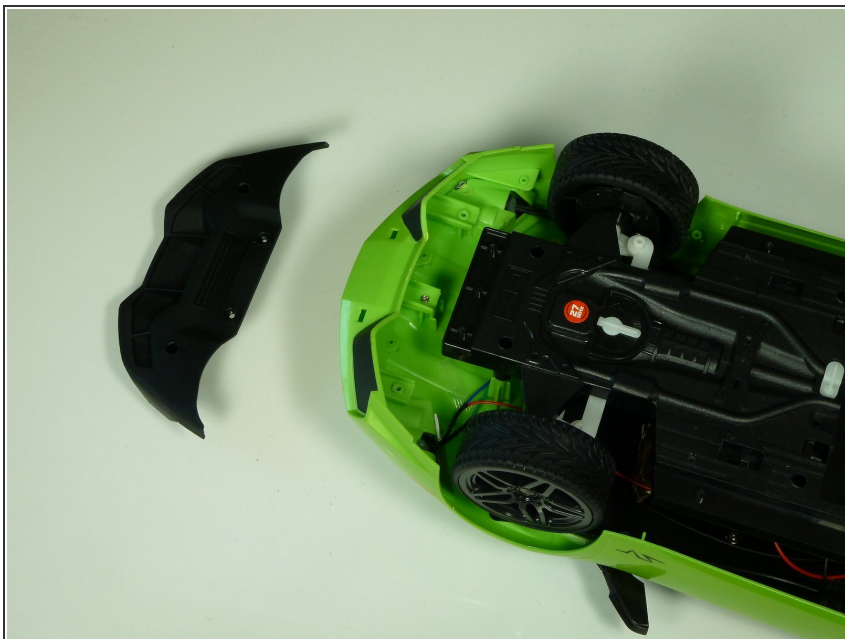
## Step 6



- Unscrew the two 2.5mm Phillips #00 screws from the front skirt of the car.

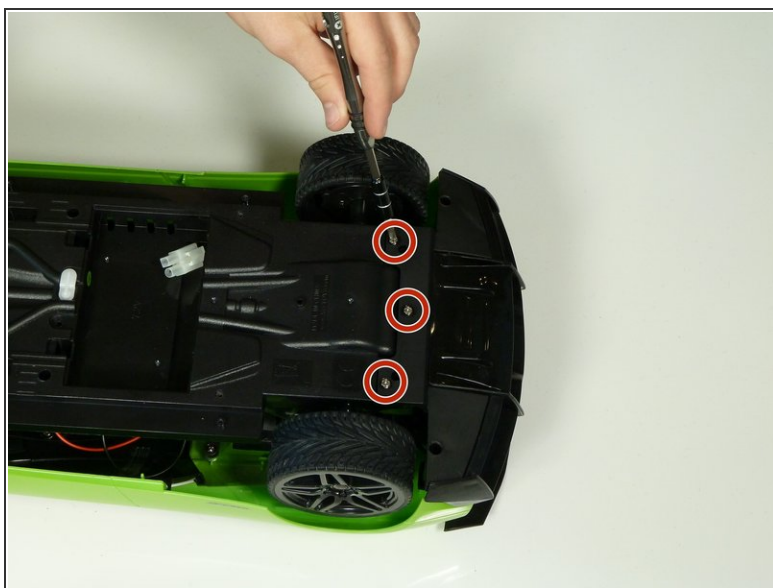
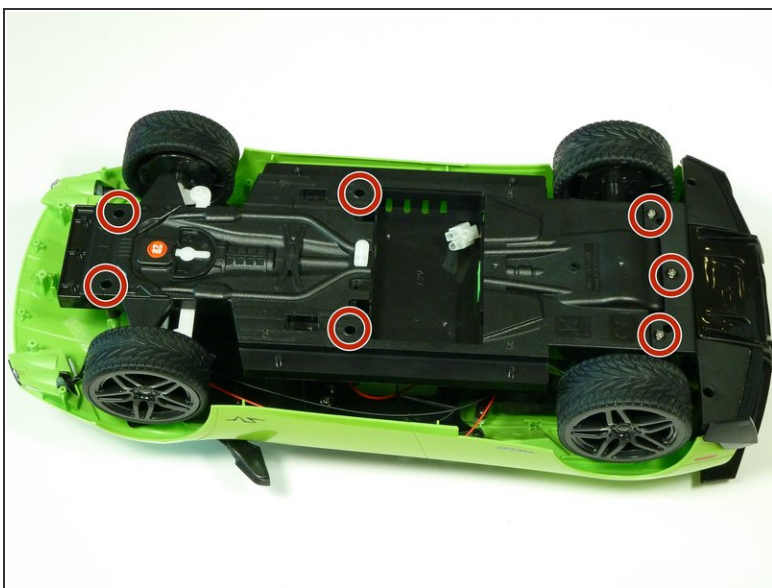


## Step 7




- Lift the front part of the underbody and pull it out from the main underbody.

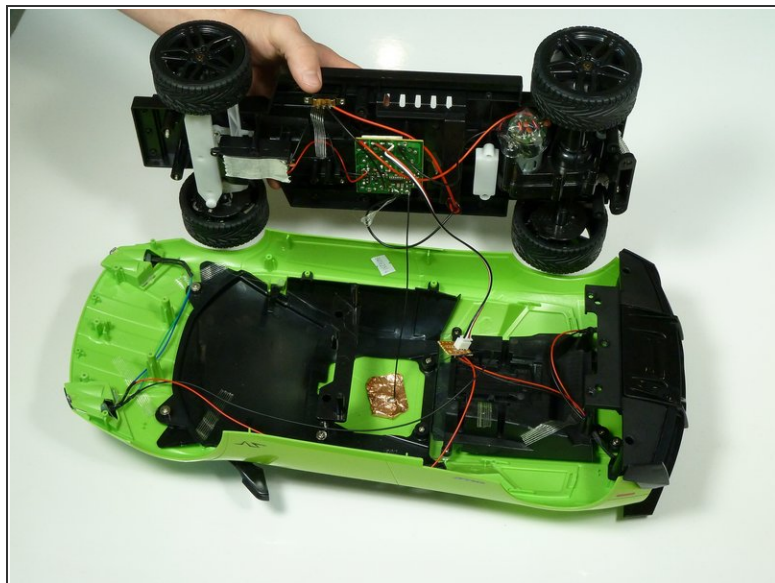
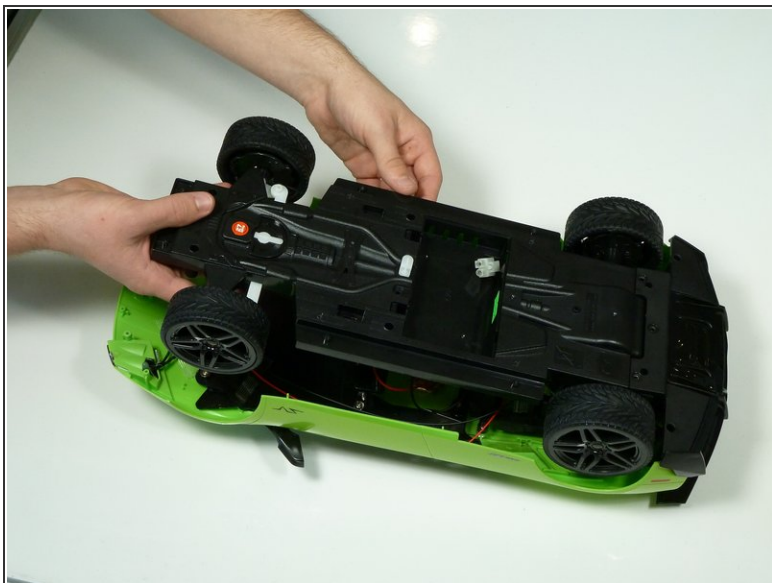
## Step 8



- Unscrew the remaining seven 9mm Phillips #00 screws from the underbody of the car.

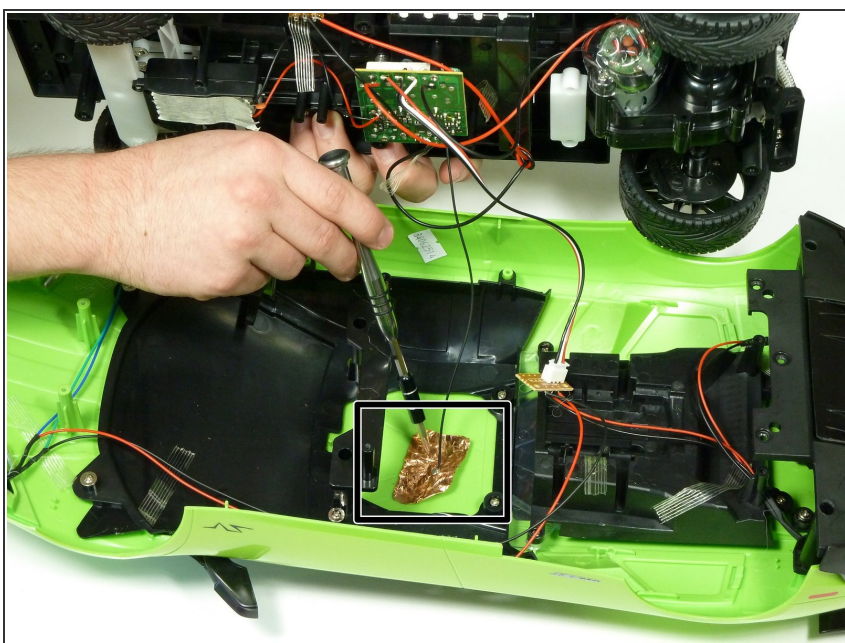
 The second image shows a closer view of the rear three screws

## Step 9



- Lift the main underbody from the shell of the car.
- Lift up the body to expose the wiring and hardware underneath.

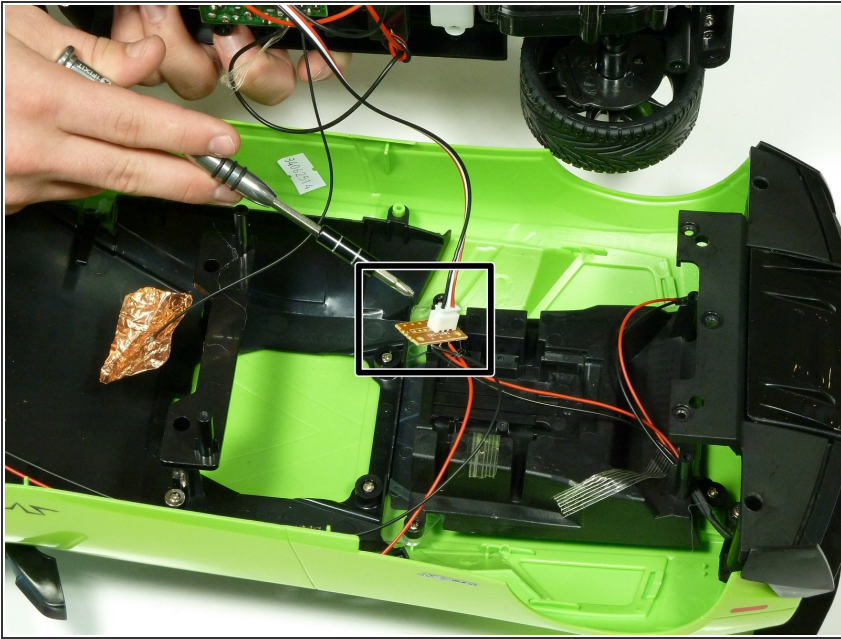
## Step 10



- Remove the reflective sticker from the top of the body.

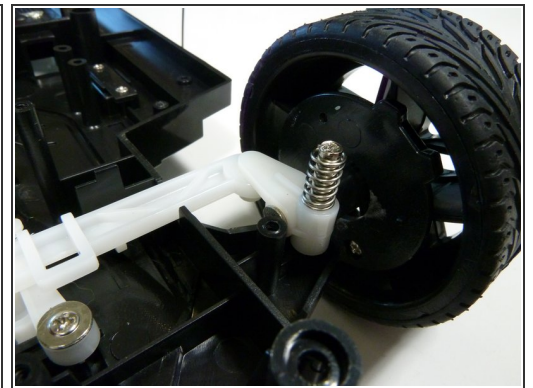
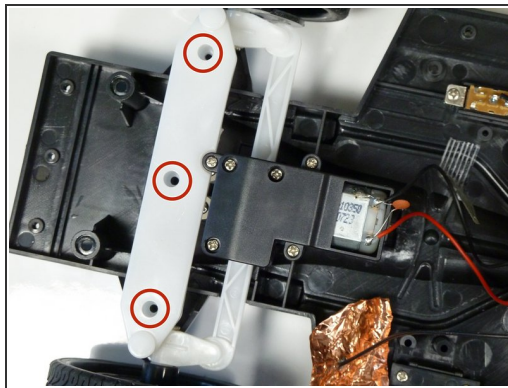
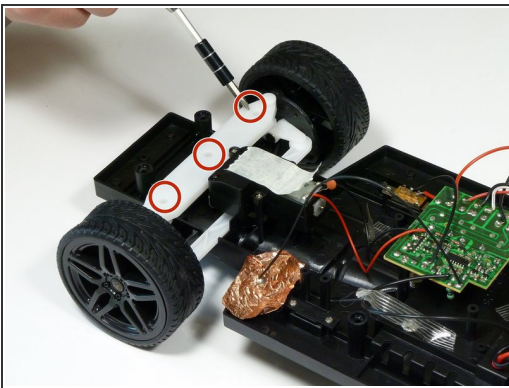


## Step 11



- Unplug the wire connector.

## Step 12 — Steering Column

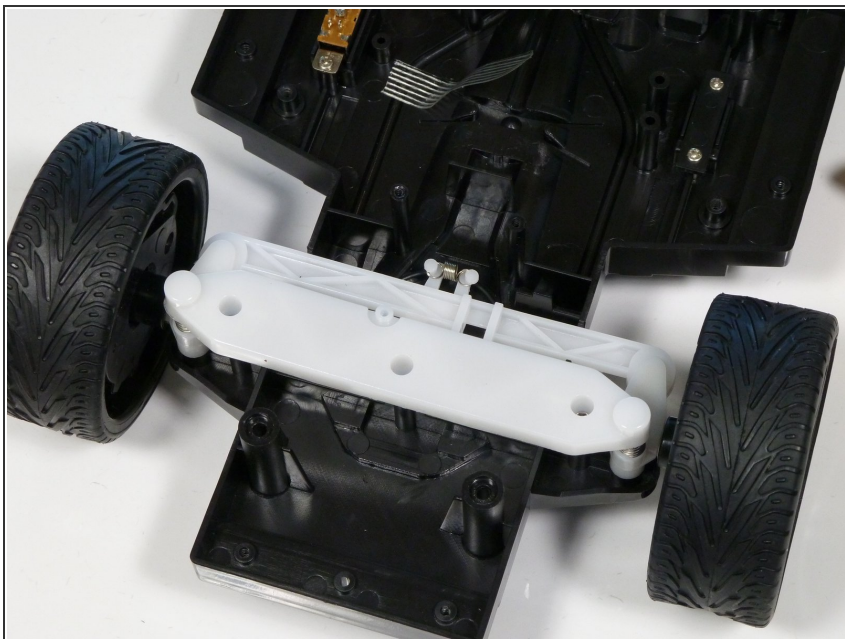


- Unscrew the three 2.5mm Phillips #00 screws from the white steering column.

⚠ After removing the three screws, the steering column will pop out of position because of the springs underneath. To reassemble, put the springs back together as shown in picture #3.

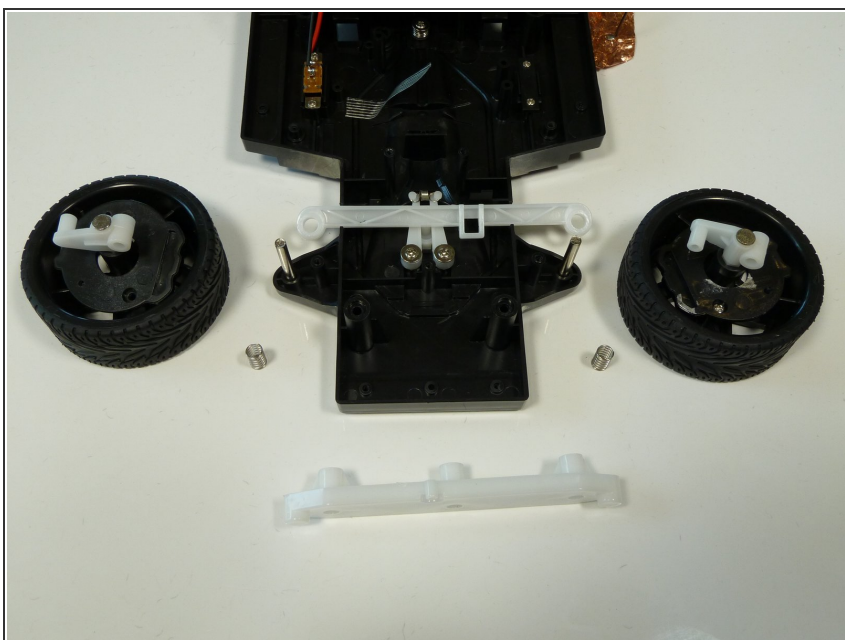


## Step 13 — Wheel



- Gently pull the steering column up and remove it along with the wheels

## Step 14



- Pull the wheels away from the steering column.
- Replace the wheel assembly.

To reassemble your device, follow these instructions in reverse order.