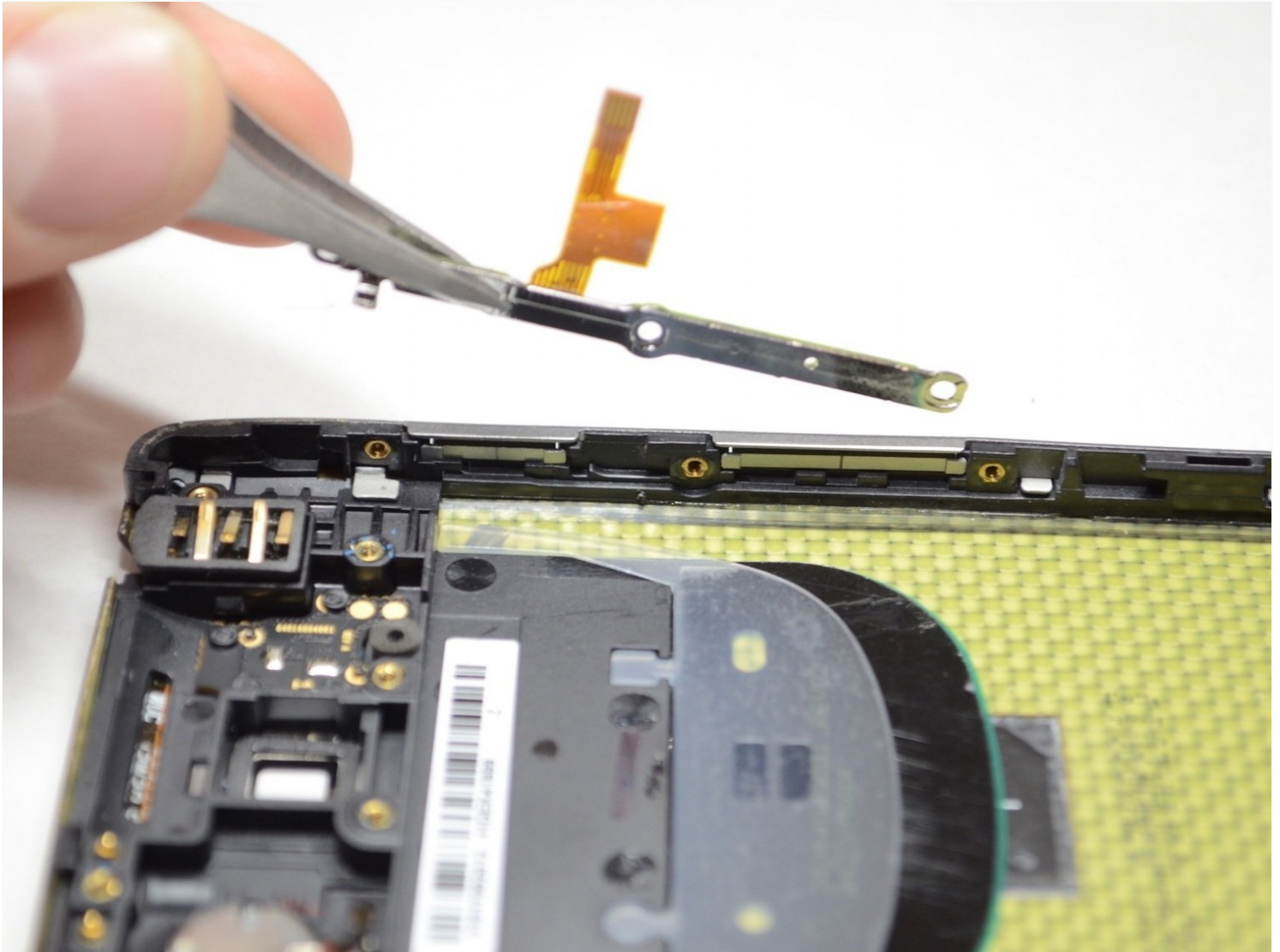




Motorola Droid RAZR HD Power Button Replacement

You've tried to turn your phone off for work,...

Written By: Blake Nielsen



INTRODUCTION

You've tried to turn your phone off for work, but the power button is stuck. Fortunately, with this guide, you can fix this problem and have control over your phone's life again.

TOOLS:

[T4 Torx Screwdriver](#) (1)

[Tweezers](#) (1)


[T3 Torx Screwdriver](#) (1)

[iFixit Opening Tool](#) (1)

[SIM Card Eject Tool](#) (1)

Step 1 — Front Panel Assembly



 **Power off the device before disassembly to avoid damage or harm from electrical surges.**

- Remove the two 4.5mm screws in the bottom left and right corners of the device using a T4 Torx Screwdriver.

Step 2



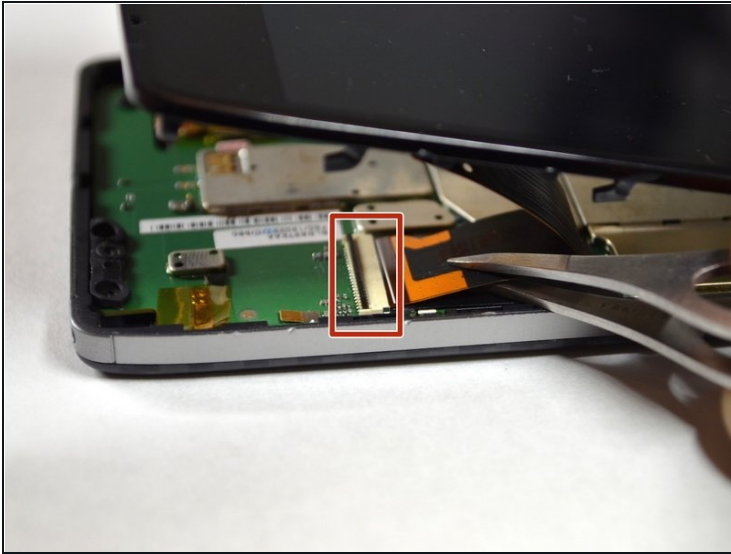
- Holding the device in your hand, push the screen towards the top of the phone until it disconnects from the base of the phone.

Step 3



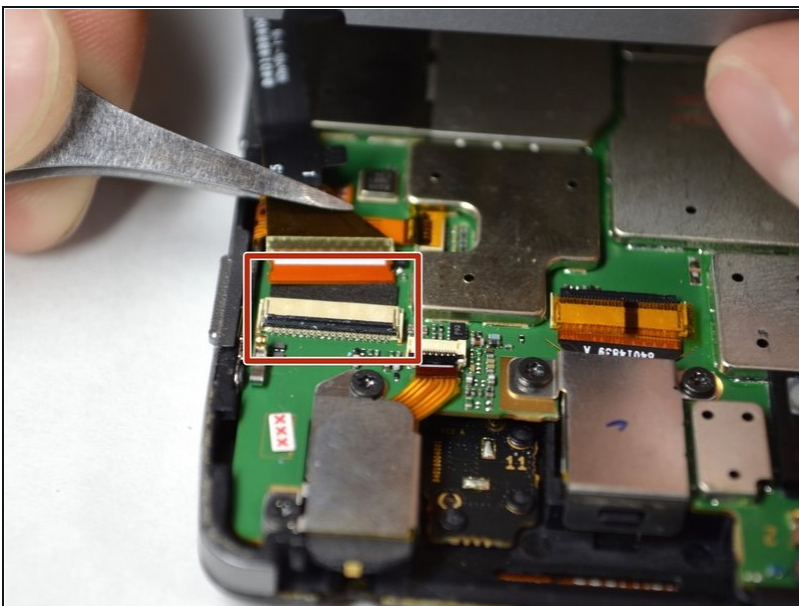
- Use a plastic opening tool to lift the screen from the phone.
- ⚠ Do not try to completely detach the screen; cables are still connected to the device and can be damaged.

Step 4



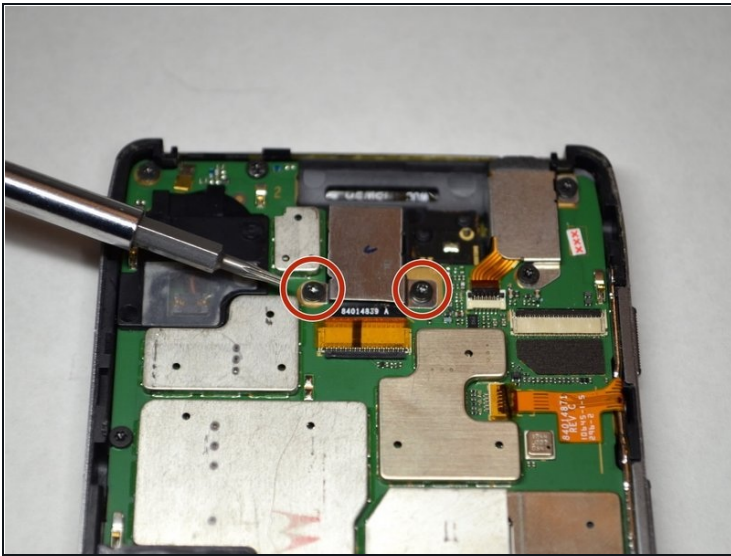
- Use tweezers to remove the yellow tape covering the lcd/digitizer cable connector.
- Carefully lift up the black locking tab to release the lcd/digitizer cable.
 - ① The cable connector is located on the bottom right section of the phone.

Step 5



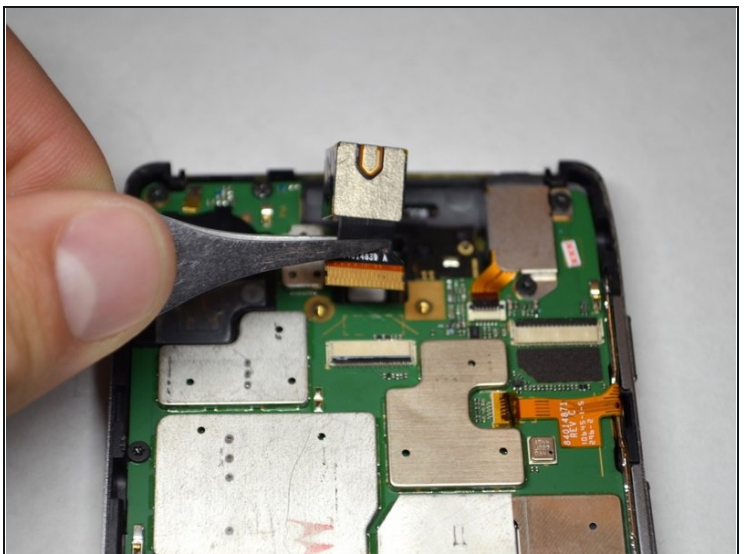
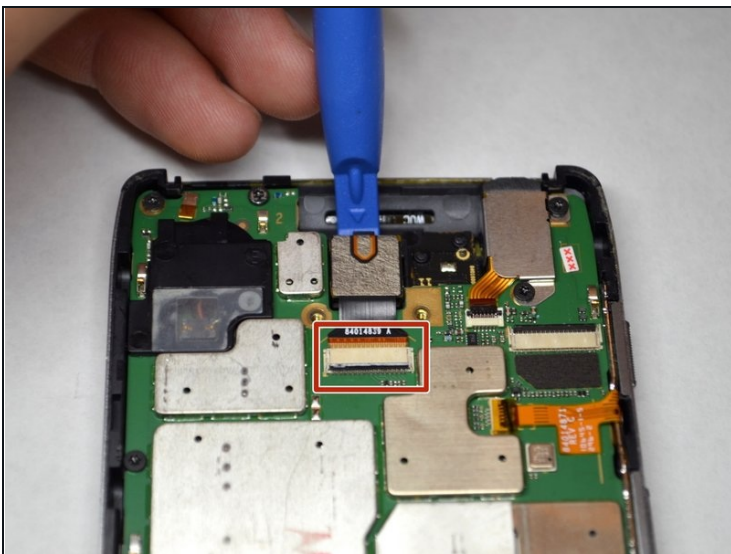
- Lift up the screen further to reveal another cable at the top of the device connecting the motherboard to the screen.
 - ① This connector is located on the top right section of the phone.
- Use tweezers to lift the black bar on top of the ZIF connector.
 - Pull the ribbon cable out of the connector with tweezers.
- Now that there are no cables connecting the screen to the motherboard, remove the screen.

Step 6 — Rear Facing Camera



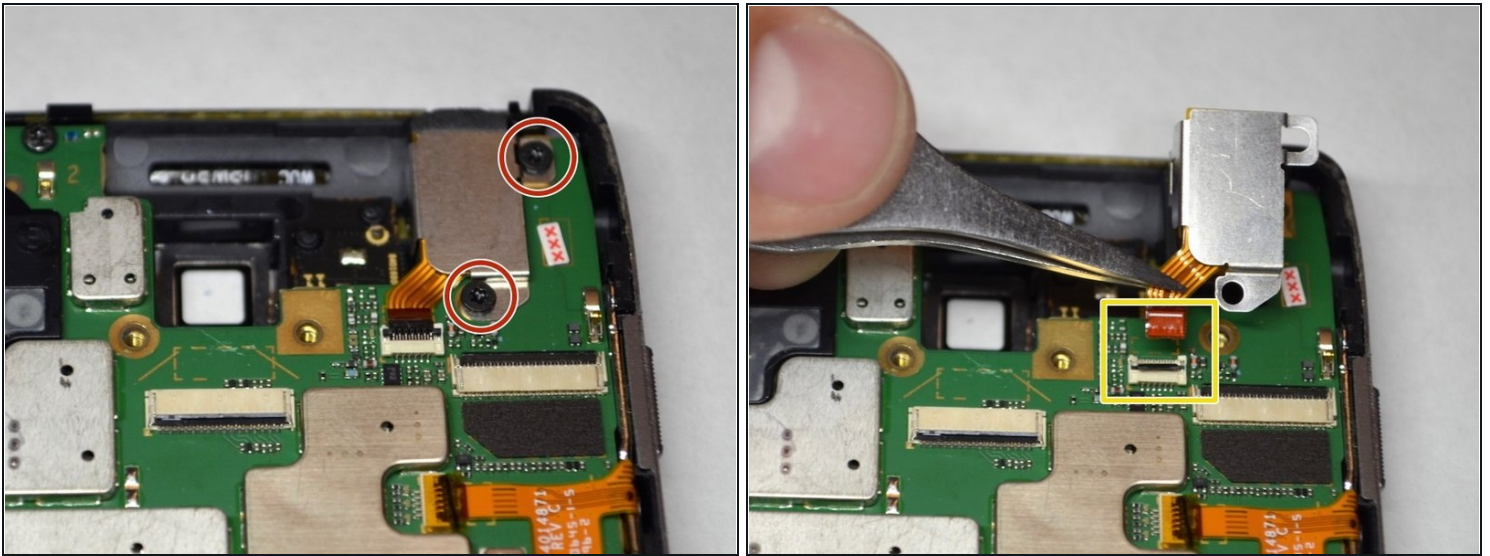
- Remove the two 3.5mm Torx T4 screws securing the rear facing camera.
- Using tweezers, remove the metal shield protecting the rear facing camera.

Step 7



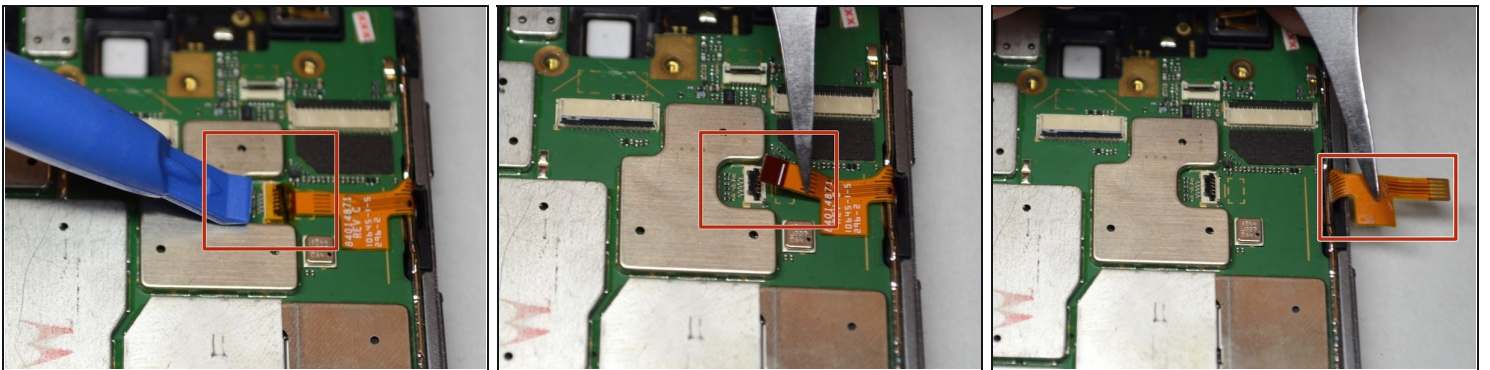
- Use a plastic opening tool to lift up the rear camera.
- Use tweezers to lift and unlock the black bar on top of the rear camera's ZIF connector.
 - Pull the camera out of the connector.
- ① You will need to unplug the rear camera from its connector on the motherboard.

Step 8 — Motherboard



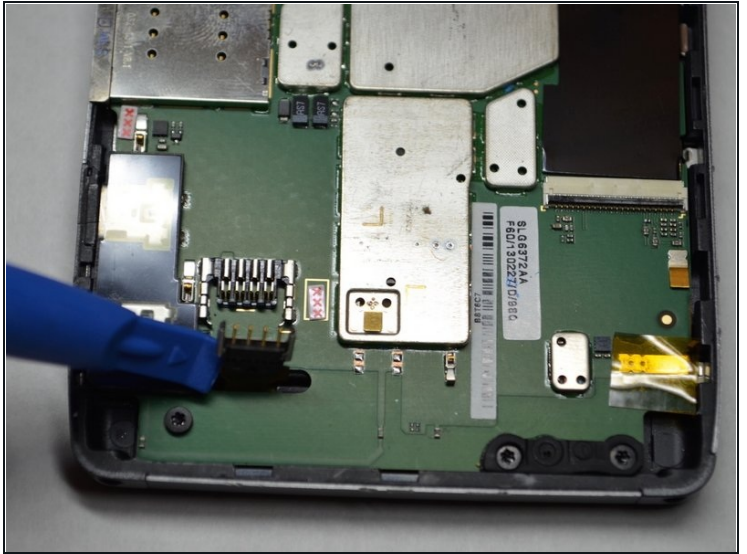
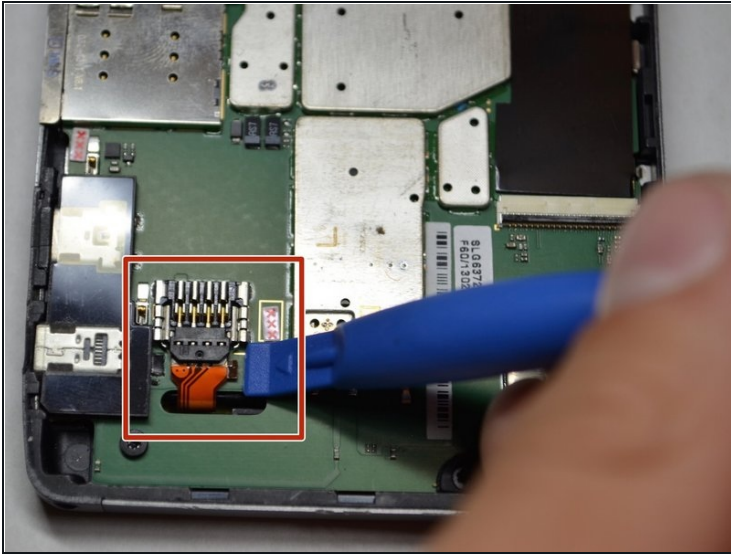
- Remove the two 3.5mm Torx T4 screws securing the headphone jack cable/cover.
- Using tweezers, disconnect the headphone jack cable/cover and remove it. The headphone jack will stay where it is.
 - ⓘ The metal shield is attached to the headphone jack.

Step 9



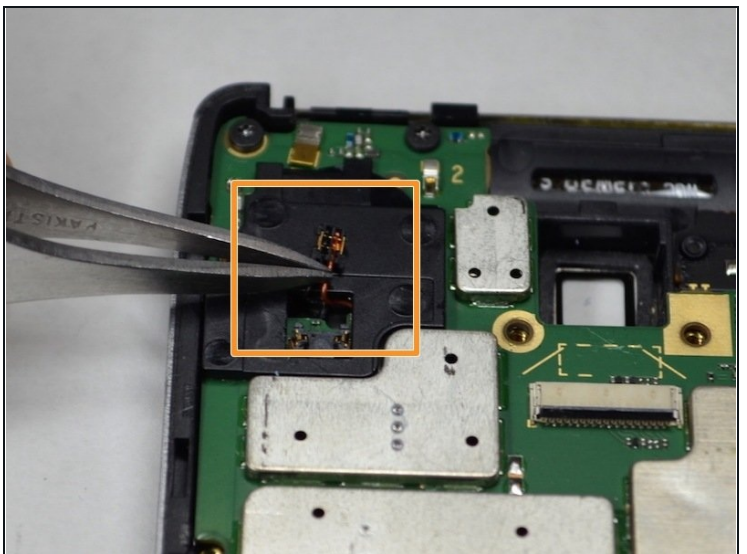
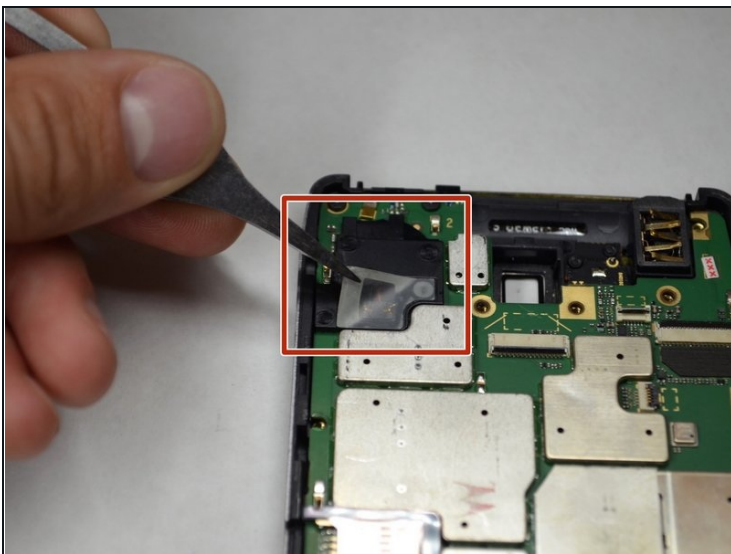
- Using a plastic opening tool or tweezers, disconnect the power button connector.
- Carefully peel back the adhesive cable with the tweezers so it is not in the way of the motherboard.

Step 10



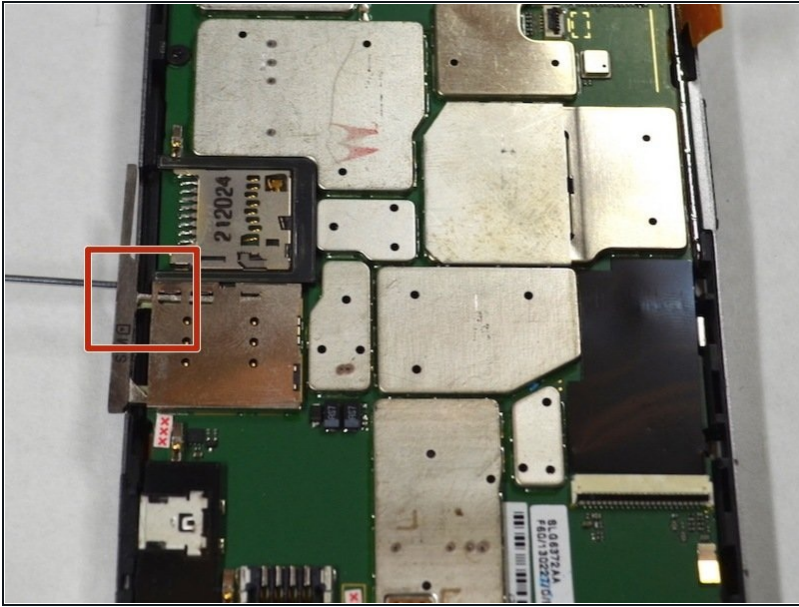
- Disconnect the battery from the motherboard by lifting up with the plastic opening tool near the base of the cable.
- Bend the battery cable straight up and out of the way of the motherboard.

Step 11



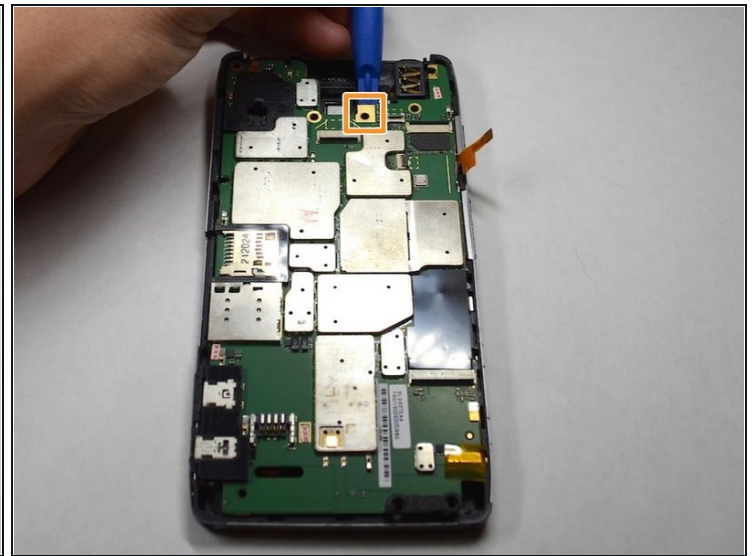
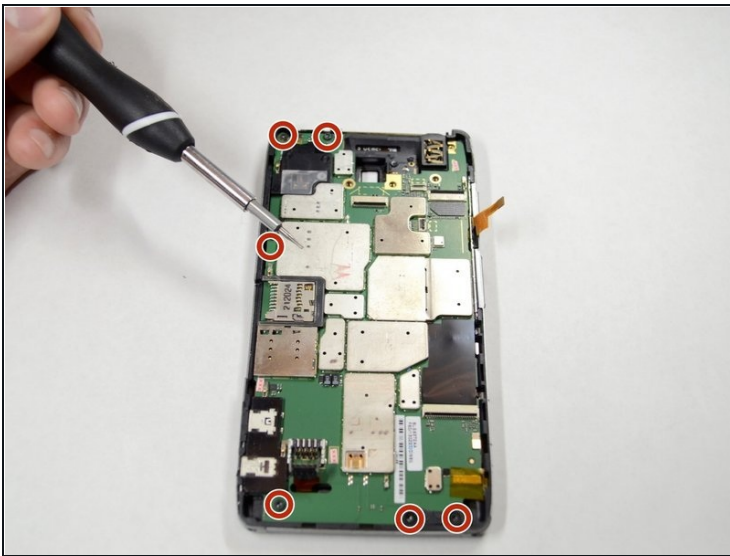
- Using tweezers, peel back the adhesive covering the speaker connector.
- Using tweezers, disconnect the speaker connector by lifting underneath the base of the connector.

Step 12



- Locate the sim card/micro sd tray on the side of the device.
- Push a small rod, such as a paper clip or sim card tool, into the opening to eject and remove the tray.

Step 13



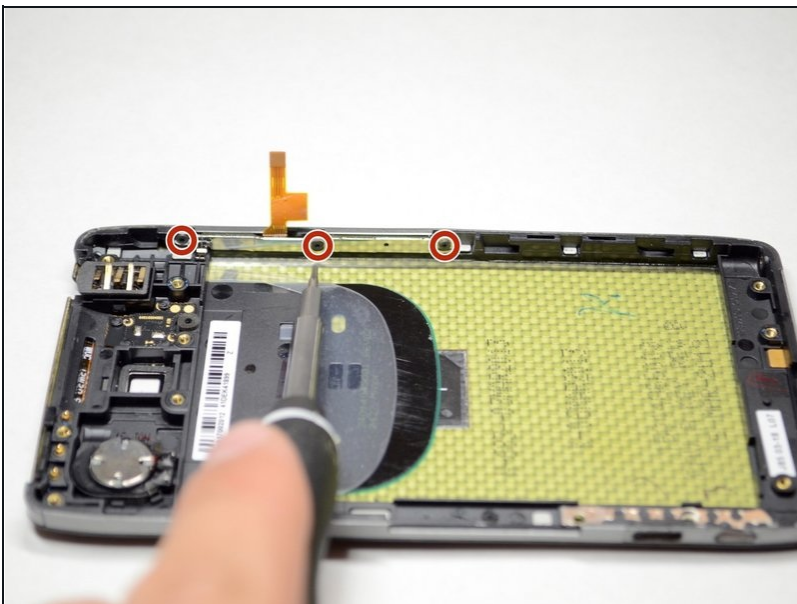
- Remove the six 3.5mm Torx T4 screws securing the motherboard to the device frame.
- Carefully pry up the motherboard from the frame using a plastic opening tool.
 - ⓘ Watch for obstructions such as loose cables.

Step 14 — Battery



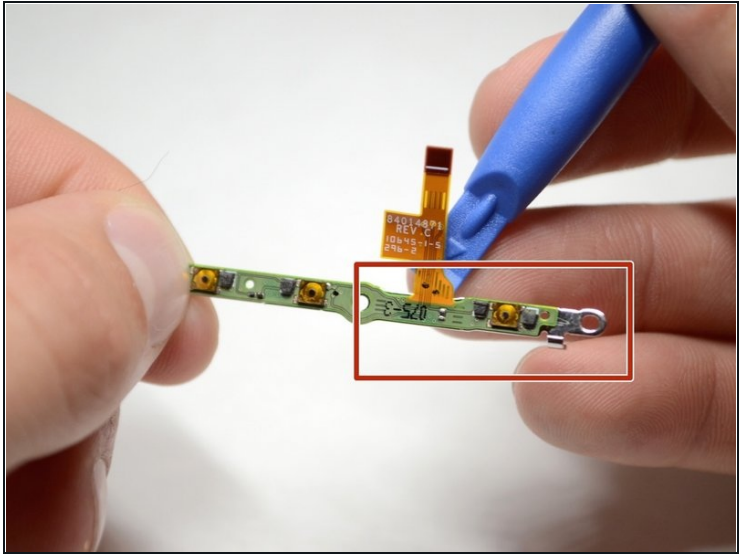
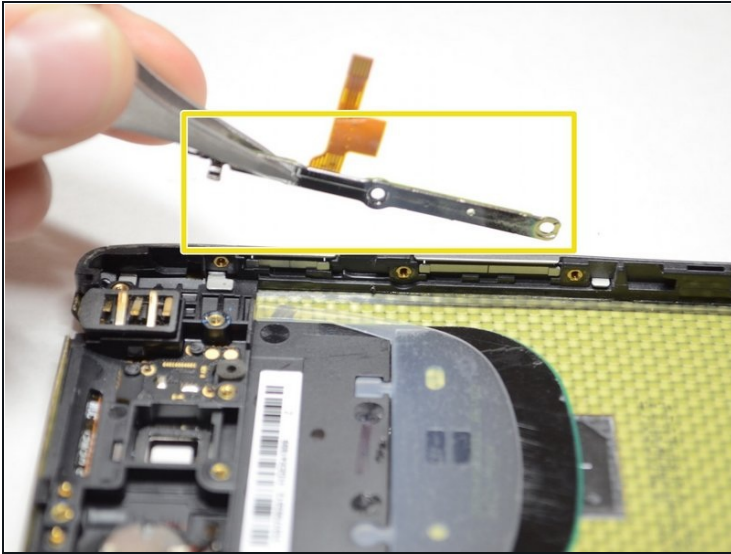
- Use a plastic opening tool to lift up the battery from the frame of the device.
- Remove the battery.

Step 15 — Power Button



- Remove the three 3.5mm Torx T3 screws holding the power/volume button cable to the side of the frame.

Step 16



- Using tweezers, remove the power/volume button flex cable.
- Remove the flex cable from the metal bracket using a plastic opening tool.

To reassemble your device, follow these instructions in reverse order.