



Canon Powershot SX30 IS LCD Replacement

This is a sample guide showing how to fix the back display if it happens to break

Written By: Ellis DeVoe





TOOLS:

- [Phillips #00 Screwdriver](#) (1)
 - [iFixit Opening Tools](#) (1)
 - [Tweezers](#) (1)
-

Step 1 — LCD Panel Rear Cover



- Turn the camera so the back of it is facing you.
- Pull the LCD screen towards you in order to open it,

Step 2



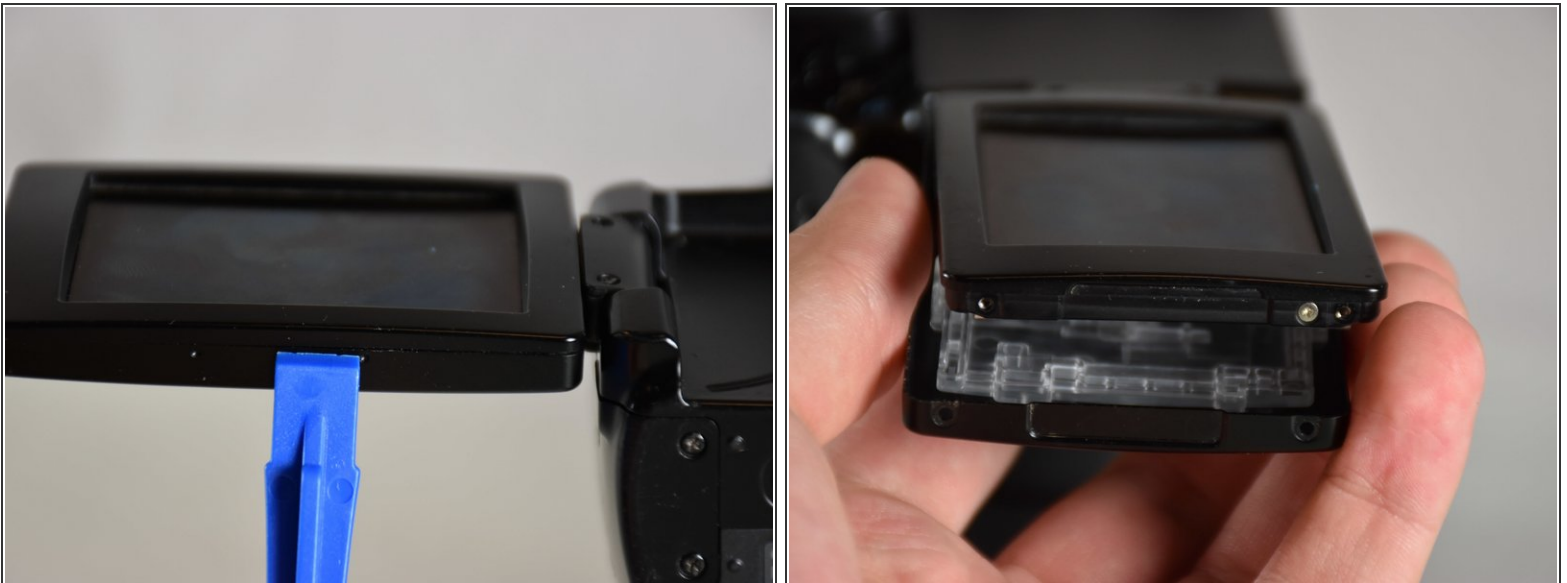
- Unscrew the two 3 mm screws shown on the left side of the LCD screen panel using a Phillips screwdriver.

Step 3



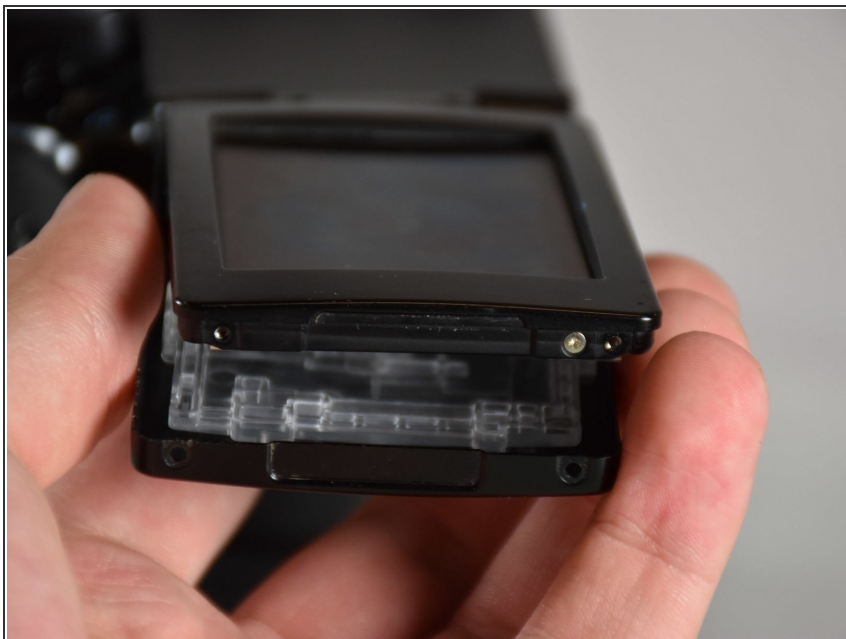
- Unscrew the two 3 mm screws shown on the right side of the LCD screen panel.

Step 4



- Using the plastic opening tool, remove the rear case of the front LCD cover.

Step 5



- Pull off the back panel of the LCD screen and the plastic wire protector. Then replace the back panel.

Step 6 — LCD Panel Front Cover



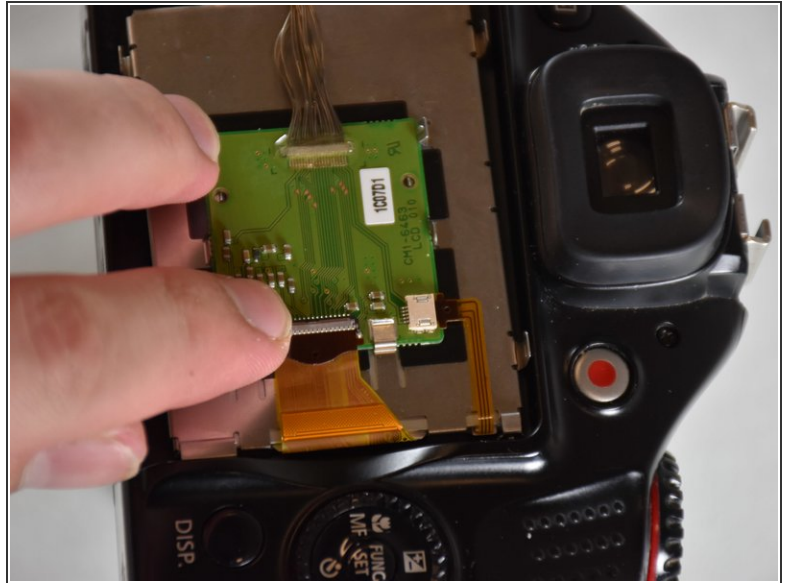
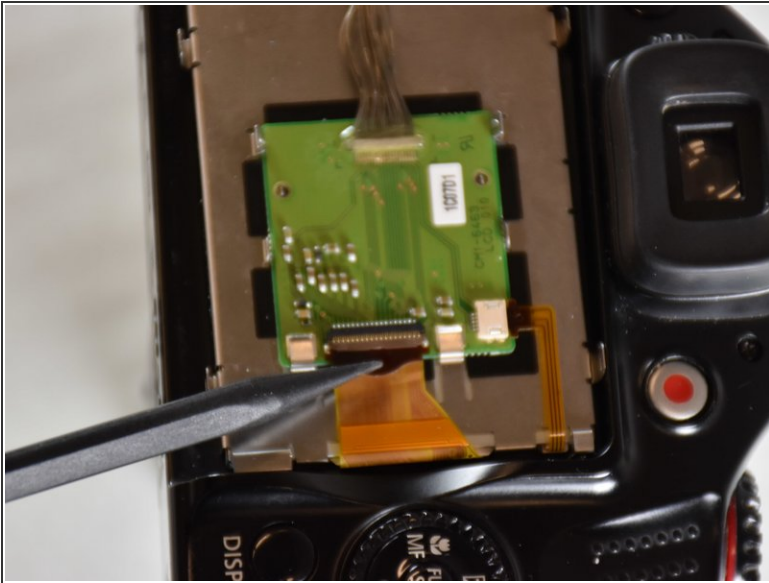
- Unscrew the 2mm screw on the outer edge of the panel

Step 7



- Unscrew the 3mm screw on the inner edge of the panel. This is easily done by rotating the screen to be perpendicular to the body of the camera, but be careful not to damage the wires or the circuit board.
- The panel will fall right off

Step 8 — LCD



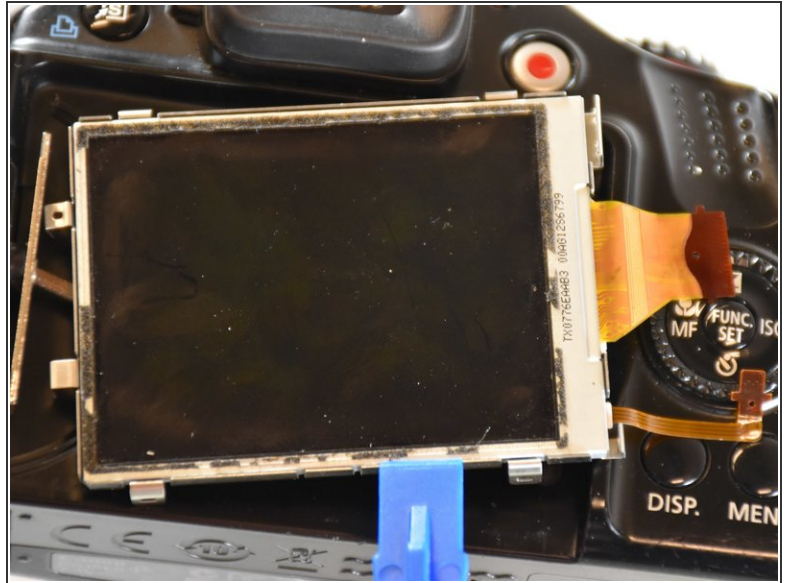
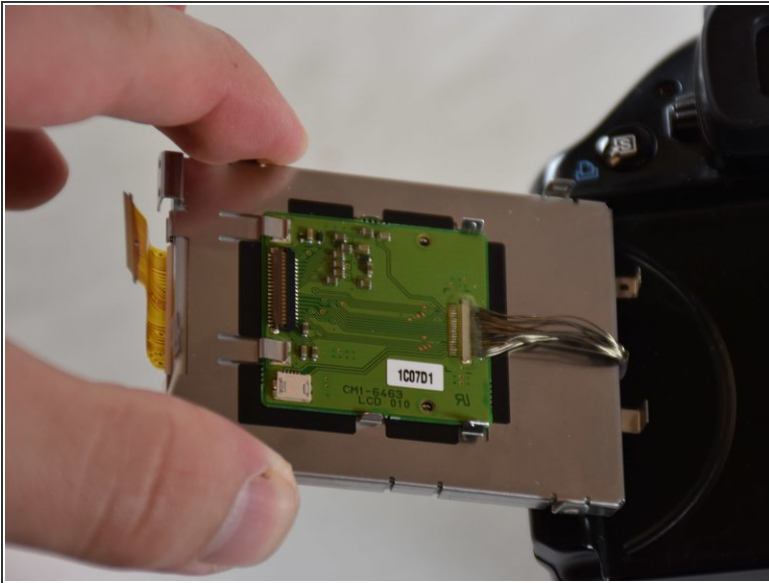
- Use spudger to remove the gold ribbon wire
- This is easily done by lifting up the small black lock that holds the ribbon wire in place

Step 9



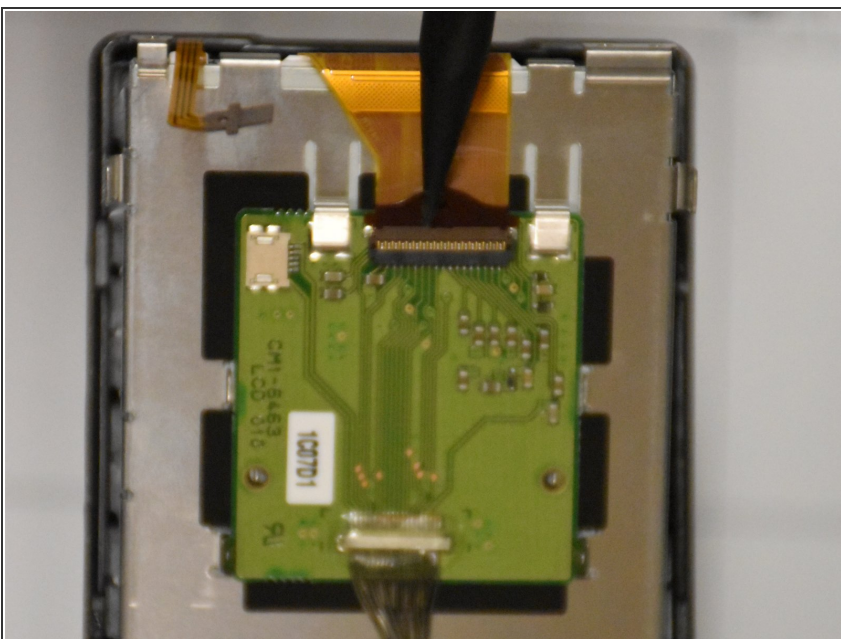
- Use tweezers to remove the second ribbon wire
- This is best done by grasping at the base and pulling straight away from the circuit board

Step 10



- Lift the LCD screen out of the metal casing.
- This is especially easy if you run the plastic opener along the bottom of the case
- When the screen pops out, replace it with the new one.

Step 11



- Place the wires back on the circuit board
- The large one can be replaced by placing the wire gently in the slot and then pushing the lock into place
- The smaller wire should be fed back into the board using tweezers to prevent bending at the edge.
- To finish, follow the previous steps in reverse order to put everything back where it belongs

To reassemble your device, follow these instructions in reverse order.