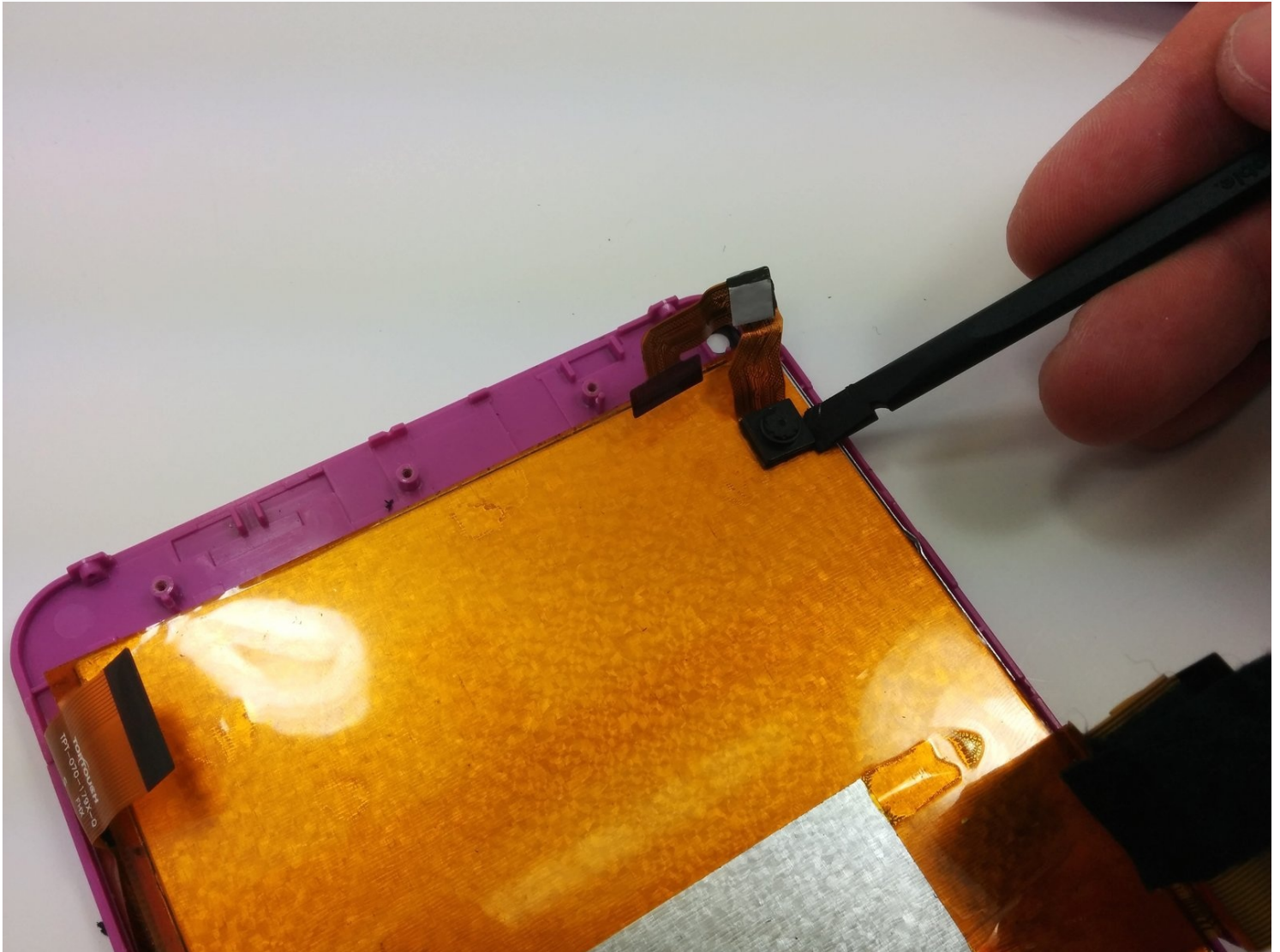




# RCA RCT6272W23 Rear Camera Replacement

In this guide, you will learn how to replace...

Written By: Stephen Radachy



# INTRODUCTION

In this guide, you will learn how to replace the rear camera on your device.

## TOOLS:

Phillips #00 Screwdriver (1)

iFixit Opening Tool (1)

Soldering Iron (1)

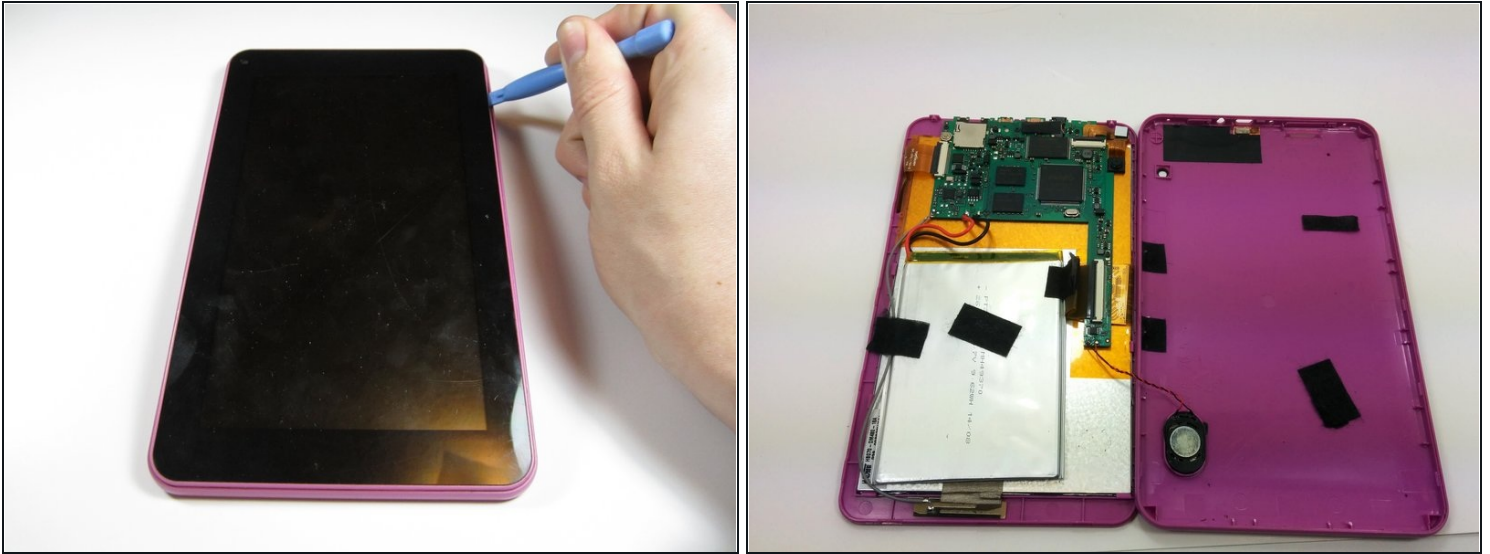
Spudger (1)

## Step 1 — Case



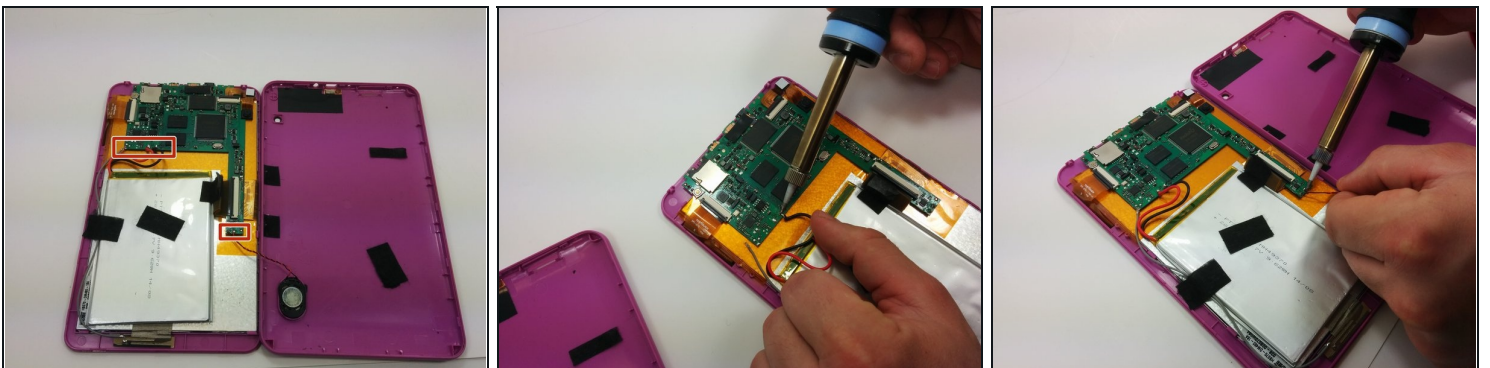
- Use a Phillips #00 screwdriver to remove both 4.1 mm screws at the top of the device which hold it together.

## Step 2



- Press the plastic opening tool into the space between the front and back portions of the case.
- Run it along the perimeter of the device to unhook the plastic tabs.
- Gently pull both sides apart.  
⚠ The speaker is connected to the back cover, so be careful when separating.

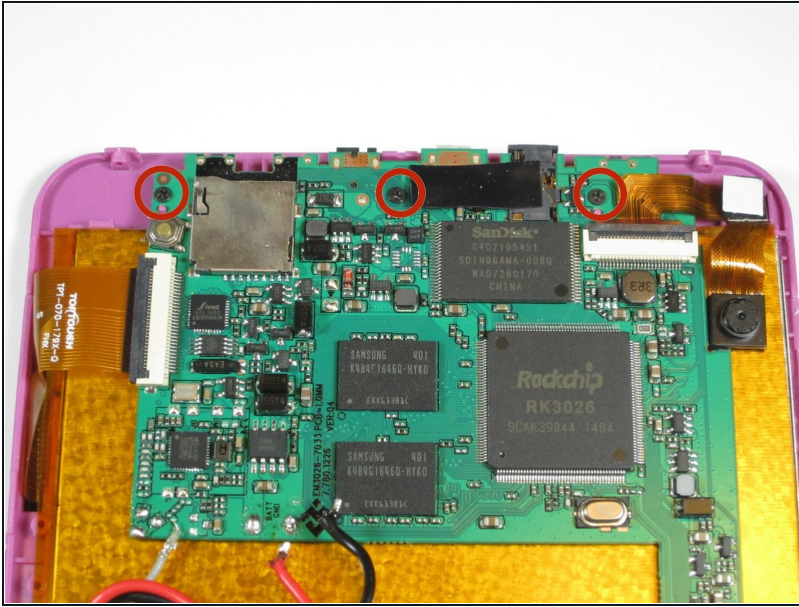
## Step 3 — Motherboard



- Use a soldering iron to remove the soldered connections on the motherboard  
⚠ For your safety and to ensure a correct repair, be sure to exercise caution when using the soldering iron.
- ① For more information about soldering, check out this [guide](#).



## Step 4



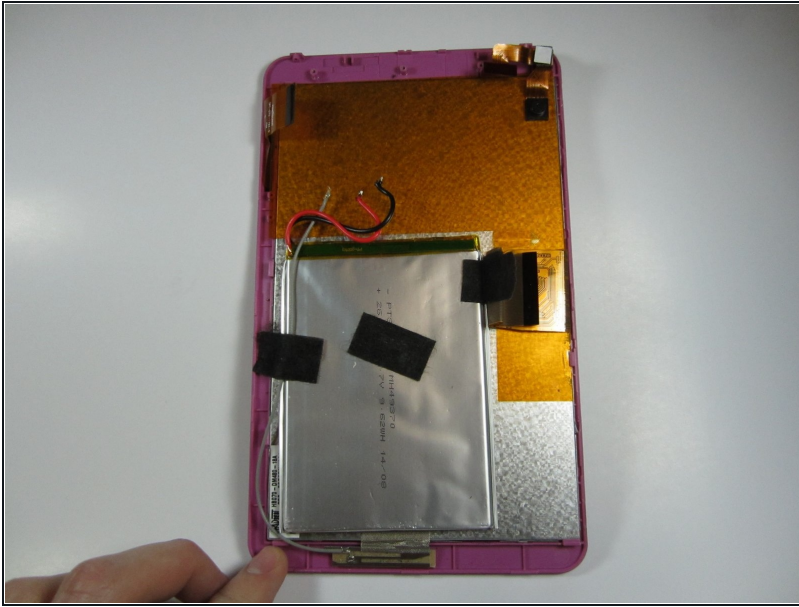
- Use a philips #00 screwdriver to unscrew the three 4.064mm screws which attach the motherboard to the front of the device.

## Step 5



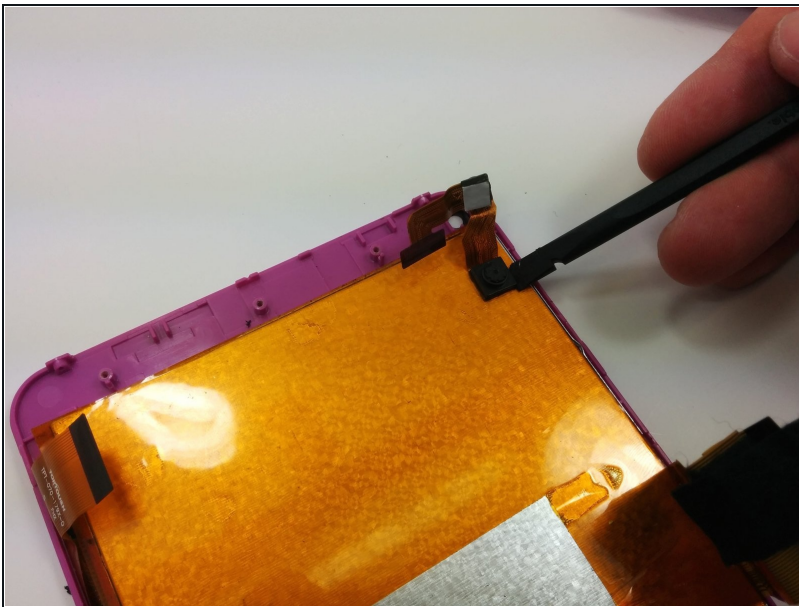
- Use your fingers to pop the three black tabs up to release the flat plastic data transfer cables.

## Step 6



- Pull up the motherboard from the rest of the body.

## Step 7 — Rear Camera



- Using a spudger, gently pry off the camera from the back of the display

---

To reassemble your device, follow these instructions in reverse order.