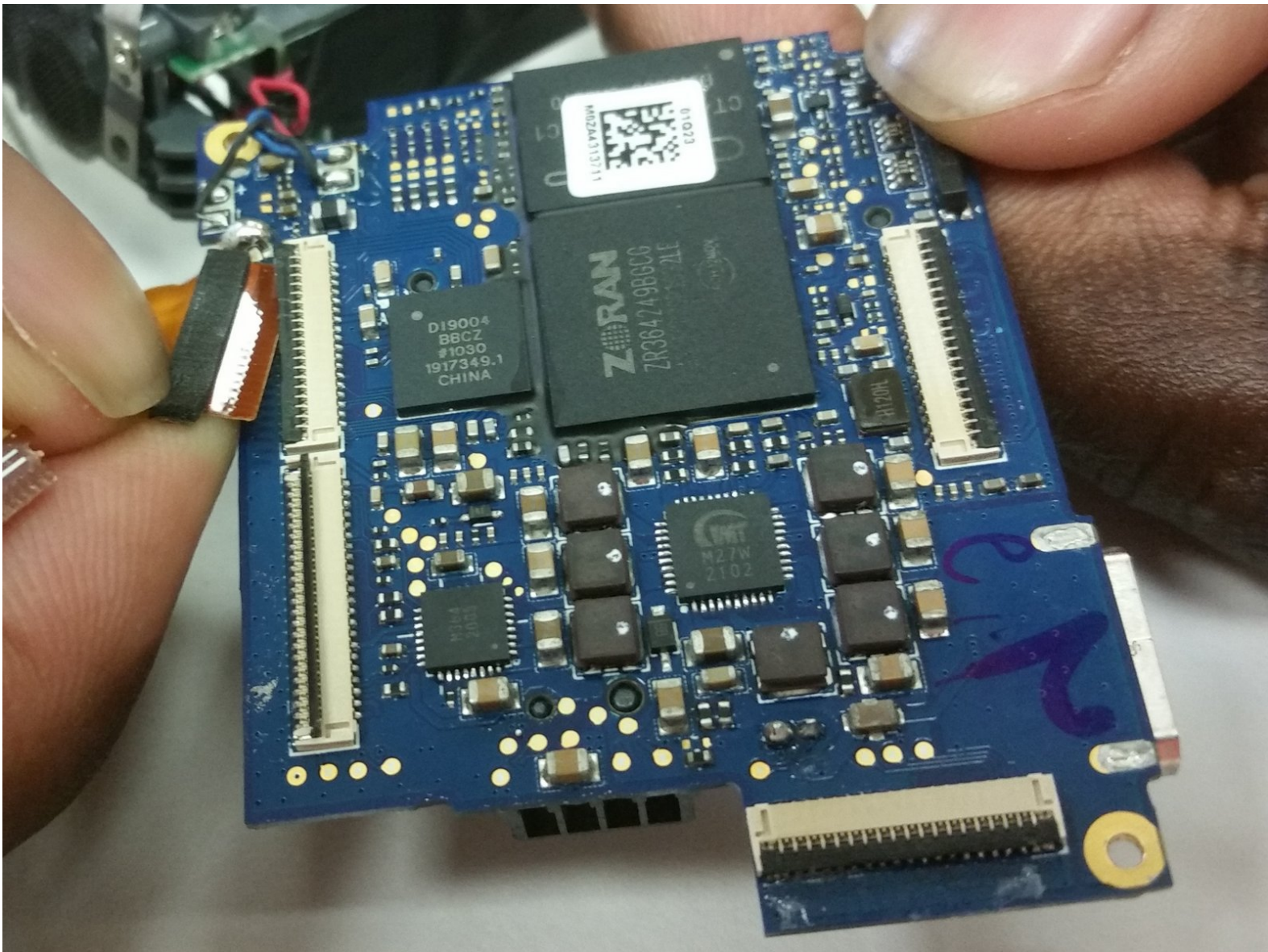




# Samsung PL200 Motherboard Replacement

In this guide you will take the following steps...

Written By: Marcus Lee



---

# INTRODUCTION

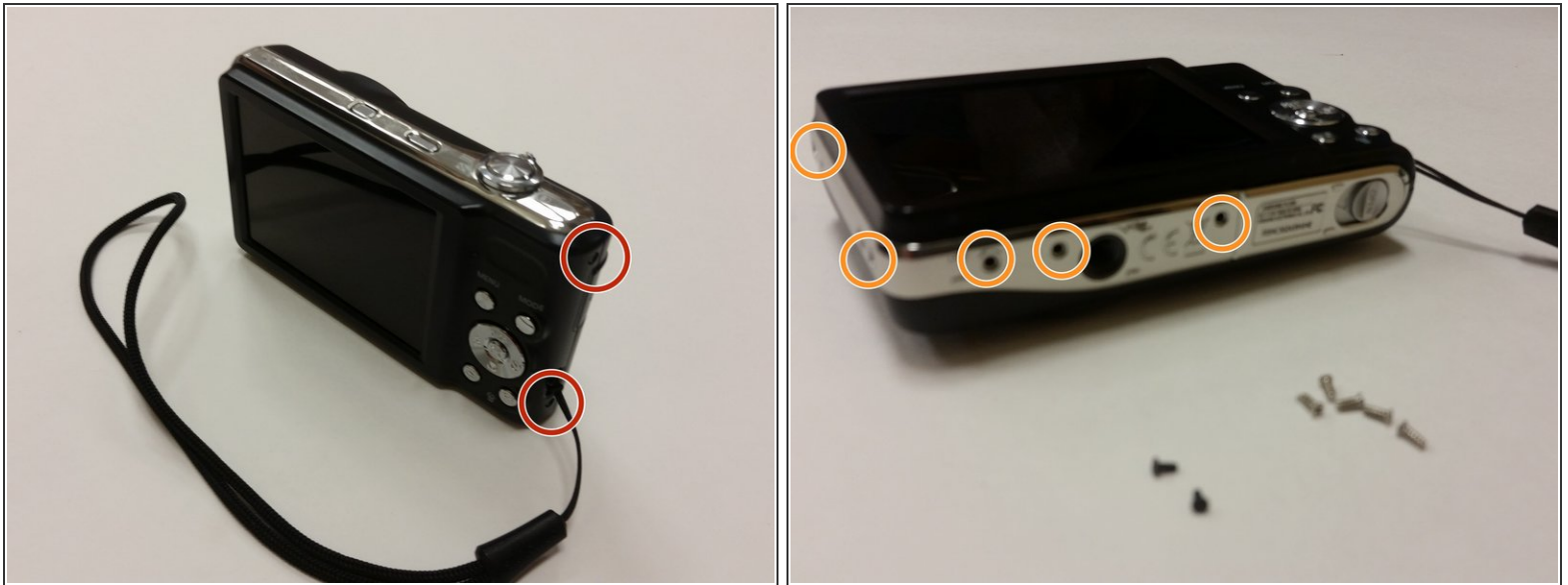
In this guide you will take the following steps to replace the motherboard in the Samsung PL200.



## TOOLS:

- [Phillips #000 Screwdriver](#) (1)
  - [iFixit Opening Tool](#) (1)
  - [Tweezers](#) (1)
  - [Soldering Iron](#) (1)
-

## Step 1 — Motherboard



- Remove the two 3mm black external screws from the camera's side using the #000 Philips Screwdriver.
- Remove the five 3mm silver external screws from the camera's side and bottom using the #000 Philips Screwdriver.

## Step 2



- Use the Plastic Opening Tool and your finger to pry off and remove the external cover.

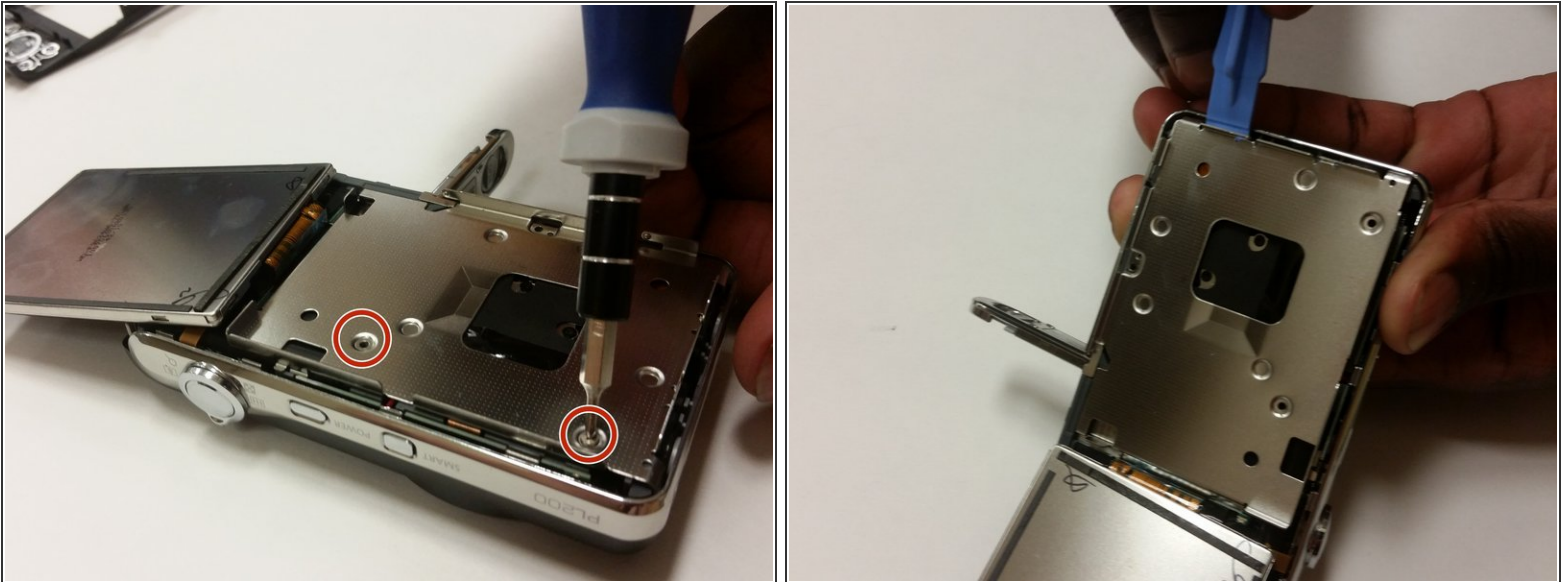


### Step 3



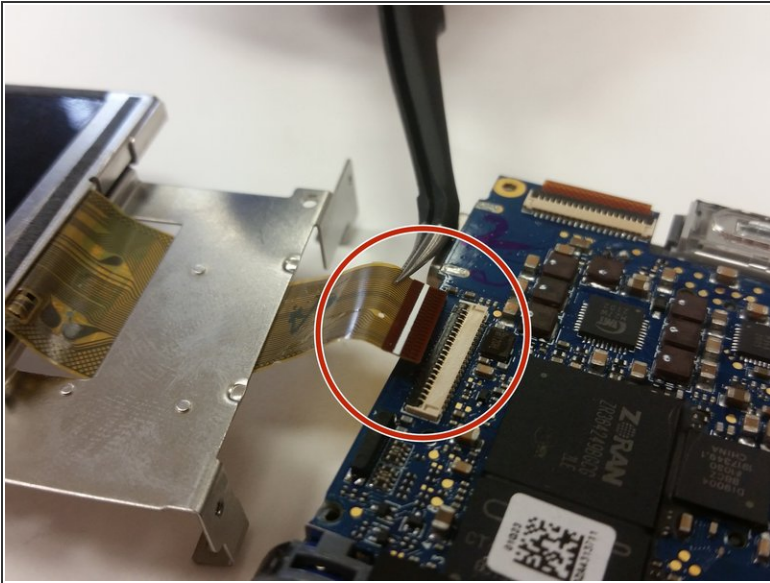
- Remove the 3mm screw holding the circuit board using the #000 Philips Screwdriver.
- Remove any tape on the circuit board and screen.
- Using Tweezers, unplug the wires from the circuit board and remove it.

### Step 4



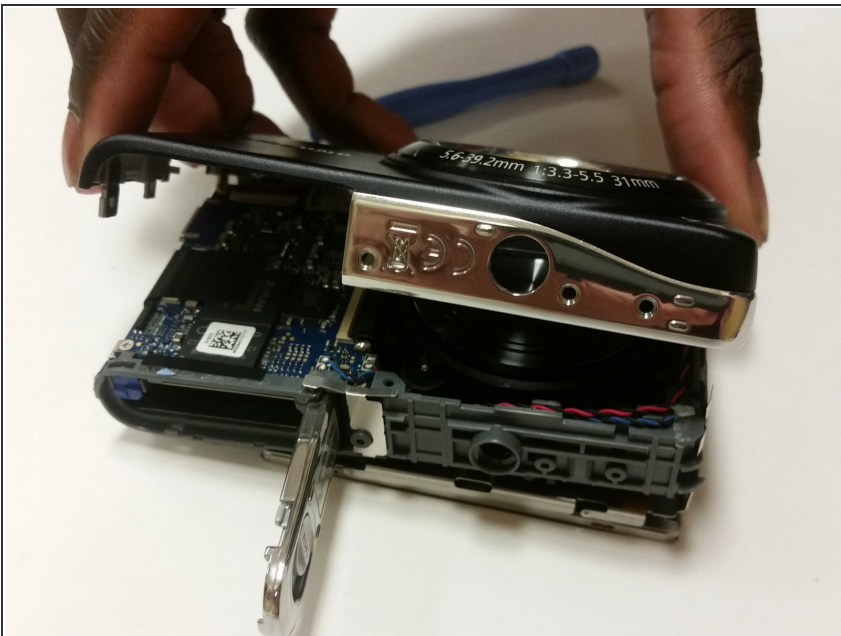
- Flip the LCD screen forward and remove the two 3mm screws beneath it using the #000 Phillips Screwdriver.
- Remove the metal brace using the Plastic Opening Tool.

## Step 5



- Lift the black latch where the screen plugs into the motherboard and pull the cord to remove the screen
- Separate the screen and the metal brace from the camera body.

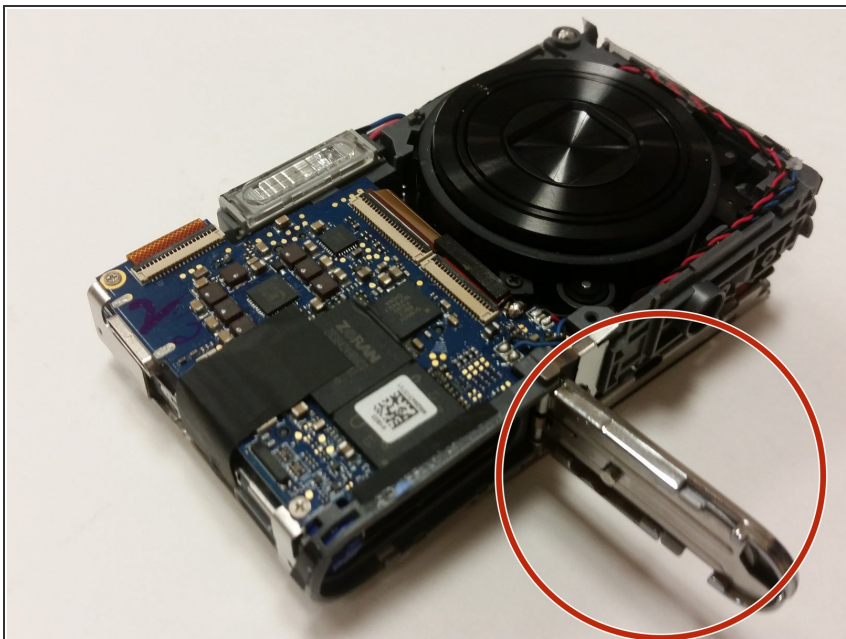
## Step 6



- Remove the front cover of the camera using your fingers and the Plastic Opening Tool.

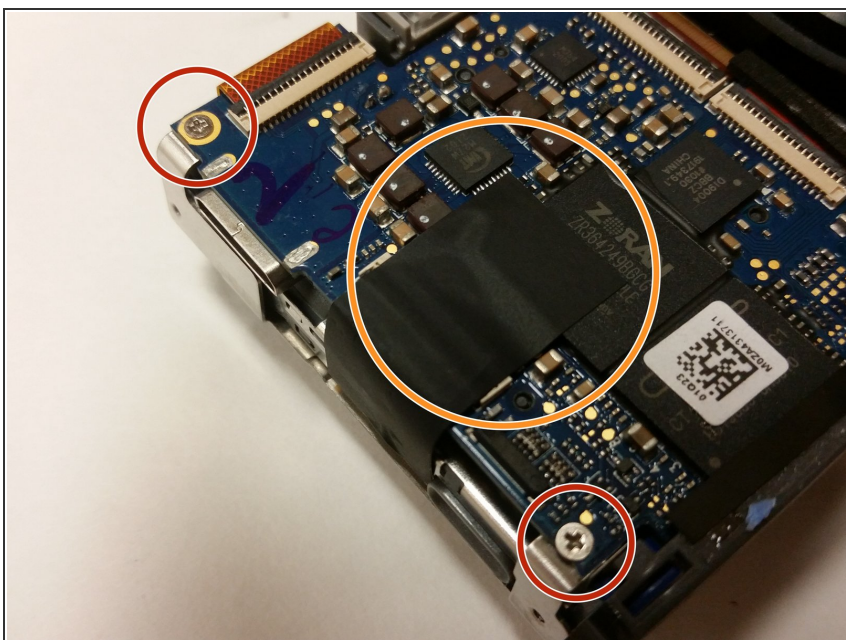


## Step 7



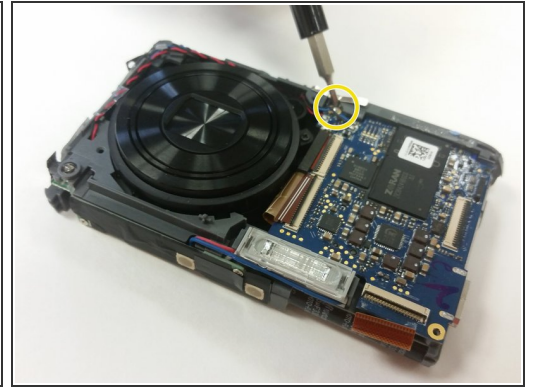
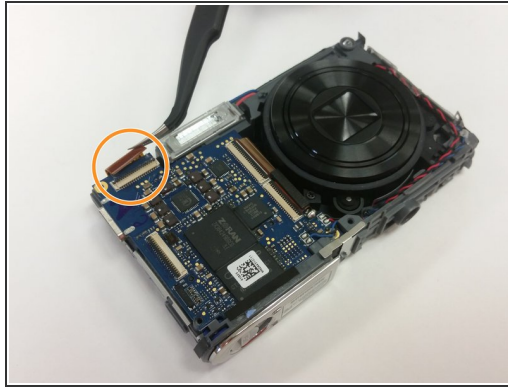
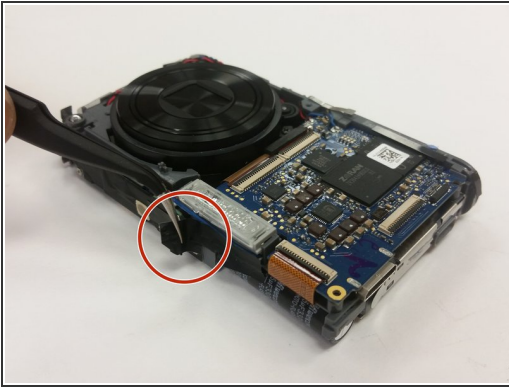
- Set the screen and metal brace aside
- Open the camera's battery cover.

## Step 8



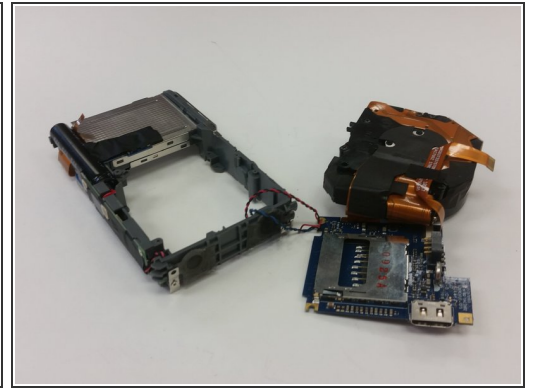
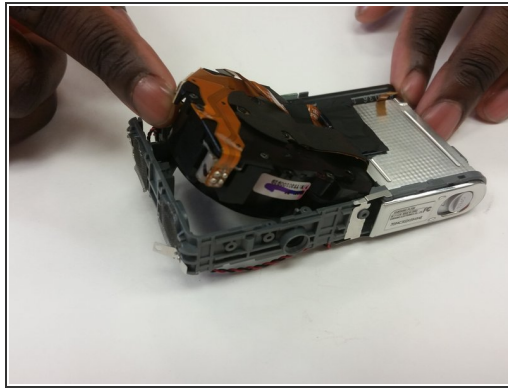
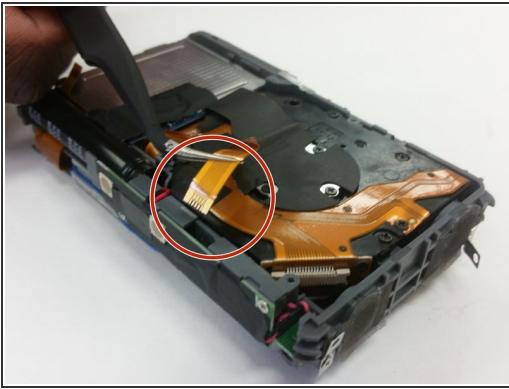
- Using the #000 Phillips Screwdriver, remove the two 3mm screws holding the motherboard in place.
- There may be tape still on the motherboard, if so, remove it.

## Step 9



- Use the Tweezers to remove the tape from bottom of the camera
- Use the Tweezers to disconnect the lens unit cord that is at the bottom of the camera from the motherboard.
- Remove the last 3mm screw that holds the motherboard in place.

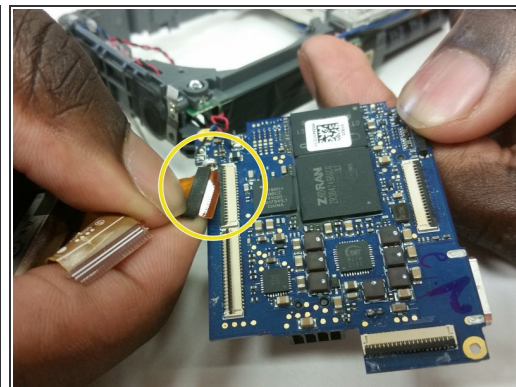
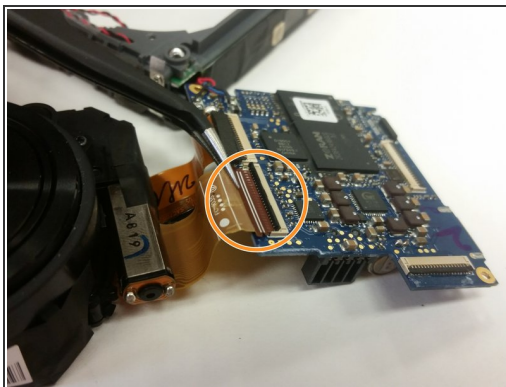
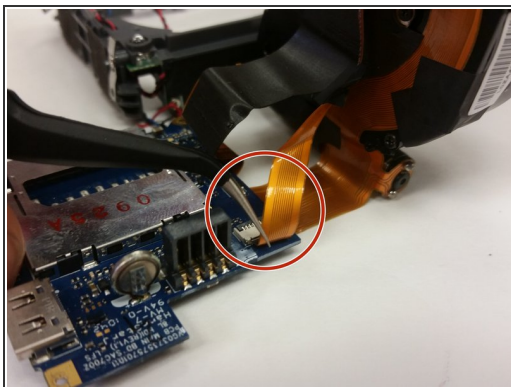
## Step 10



- Use the Tweezers to unplug the small lens unit cord from the camera frame on the back side of the camera.
- Gently lift the lens unit from the frame.
- Separate the lens unit, motherboard, and camera.

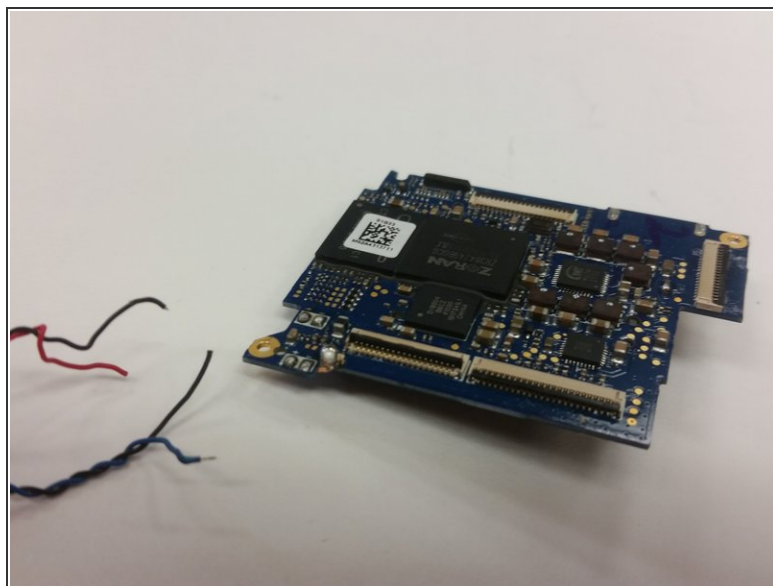
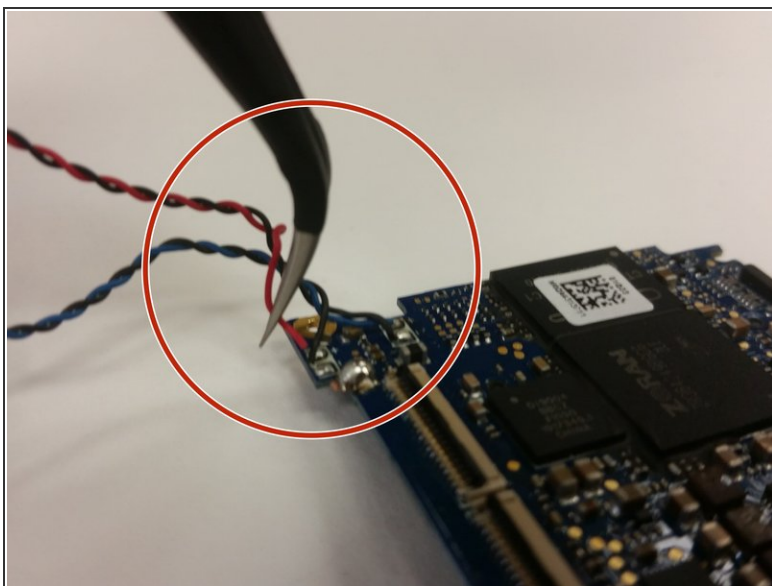


## Step 11



- Use the Tweezers to remove the small cord from motherboard.
- Use the Tweezers to remove the first large lens unit cord from the motherboard.
- Use the Tweezers to remove the second large lens unit cord from the motherboard.

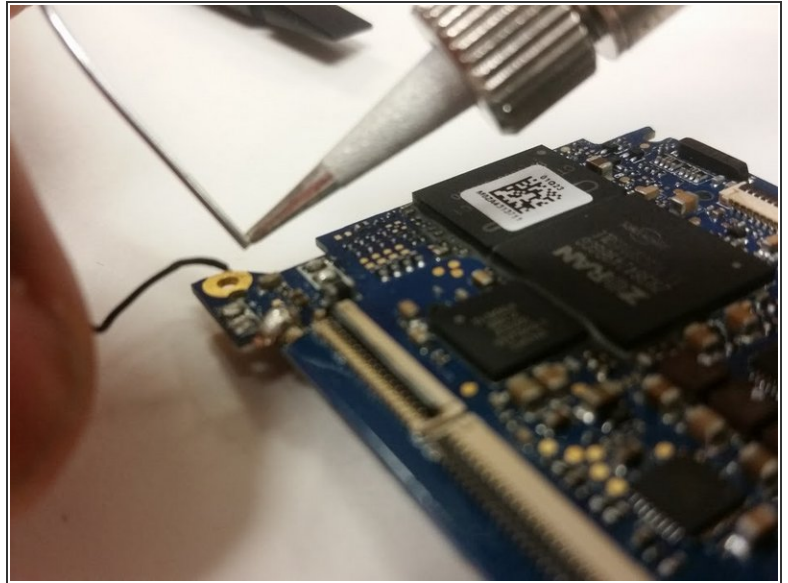
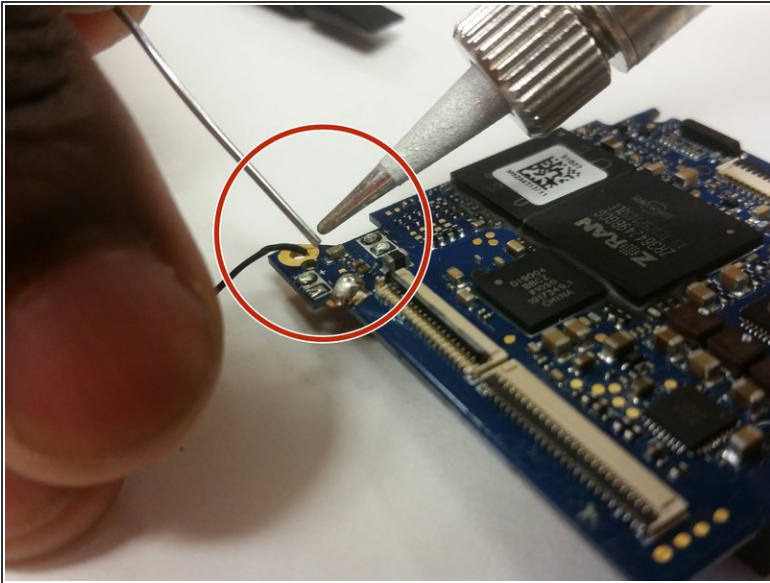
## Step 12



- Desolder the four wires from the old motherboard.



## Step 13



- Last, solder on a functional motherboard at this stage and reassemble the device.

To reassemble your device, follow these instructions in reverse order.