



Sony Handycam DCR-SR42 Lens Replacement

The lens of the Sony Handycam DCR-SR42 is one of the most important components in order to successfully record and capture images. A broken/ faulty lens would lead to an improper recording.

Written By: Dan Muller



INTRODUCTION

The lens of the Sony Handycam DCR-SR42 is one of the most important components in order to successfully record and capture images. A broken/ faulty lens would lead to a blurry recording or prevent the camera from recording images at all.

Replacing the lens of the DCR-SR42 is a simple procedure that will take no more than 30 minutes. However, the user should be careful when disassembling the camera in order to avoid damaging the flex cable or any other internal components of the camera. The user should also ensure that the battery is disconnected from the camera at least an hour before disassembly is attempted, since capacitors inside the camera can remain charged with electricity some time after the battery is removed. It is necessary to allow capacitors to discharge to prevent injury to the user or damage to the camera.

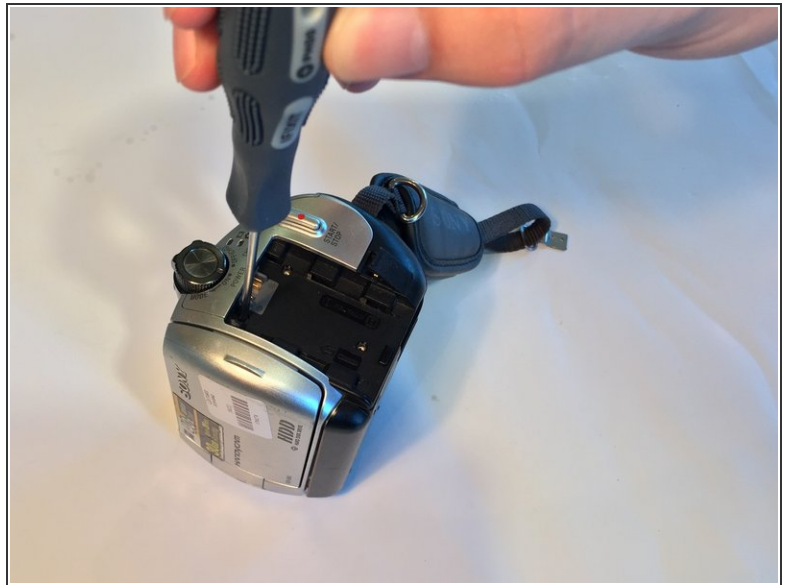
For problems pertaining to the lens, refer to the [Sony Handycam DCR-SR42 Troubleshooting Guide](#)



TOOLS:

- [Phillips #00 Screwdriver](#) (1)
 - [iFixit Opening Tools](#) (1)
-

Step 1 — Hard Drive



- Remove the battery, and use the Phillips #00 precision screwdriver to then remove the three 3mm Phillips #00 screws under the battery.

⚠ Wait 1 hour after removing the battery before continuing to disassemble the camera.

Step 2



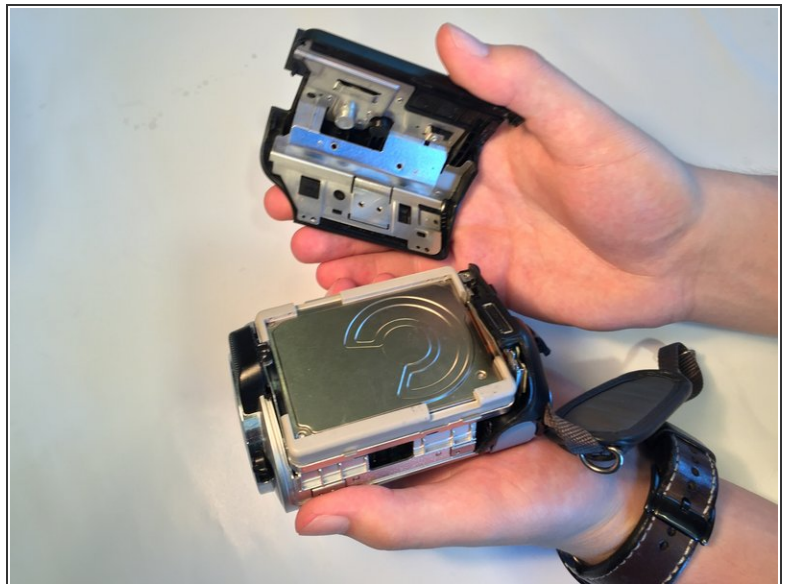
- Remove the three 3mm #00 Phillips screws on the bottom of the camera.

Step 3



- Remove the three 3mm Phillips #00 screws on the side of the camera.
- Remove the 4mm Phillips #00 screw under the AV port cover.

Step 4




- Gently pull the black plastic hard drive cover away from the body of the camera. This will expose the hard drive.

i Even with all the screws removed, this part will require some force to remove.

Step 5



- Lift the hard drive out of the camera by grasping the grey rubber mounting brackets and pulling them upwards.

 The hard drive is attached to the flex cable. Remove the hard drive slowly to prevent the flex cable from being damaged.

Step 6



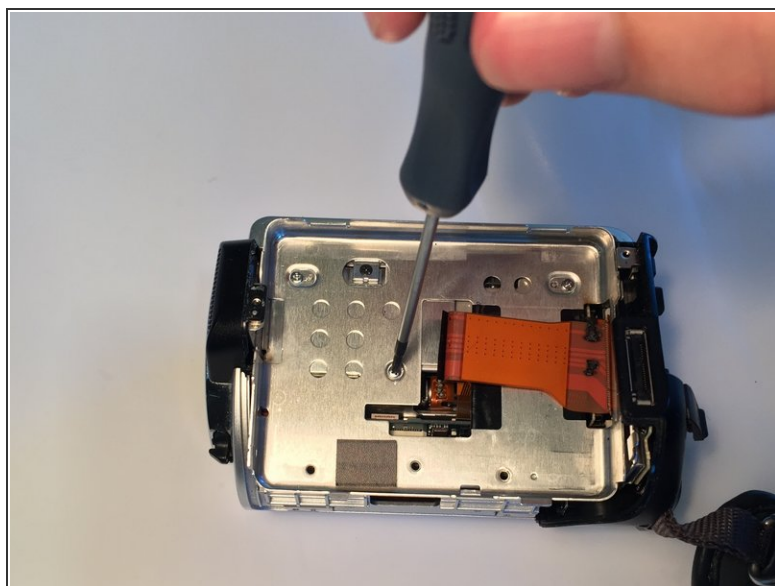
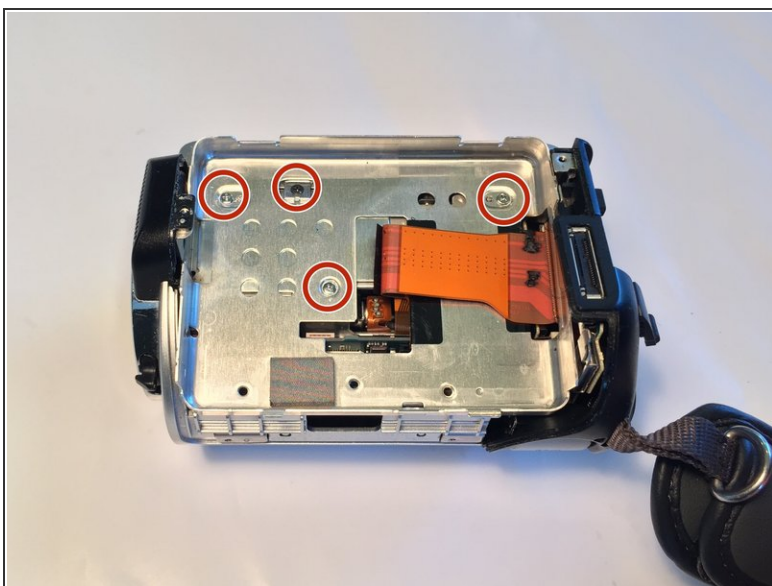
- Remove the rubber mounting brackets by pulling them off the hard drive.

Step 7



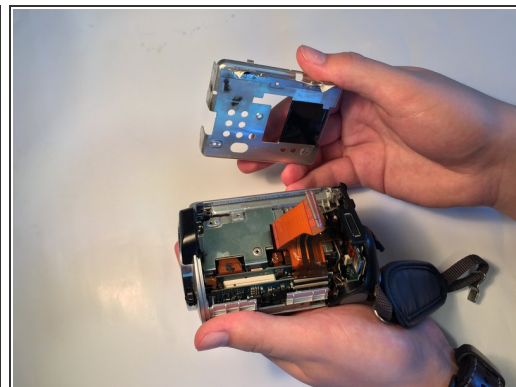
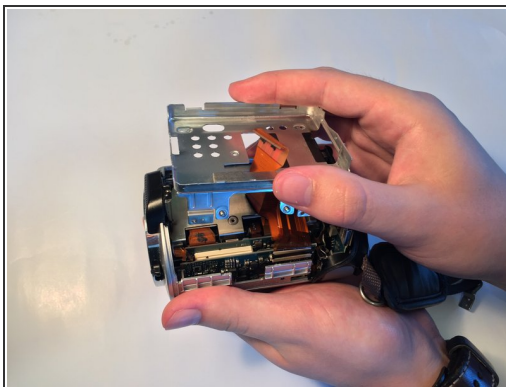
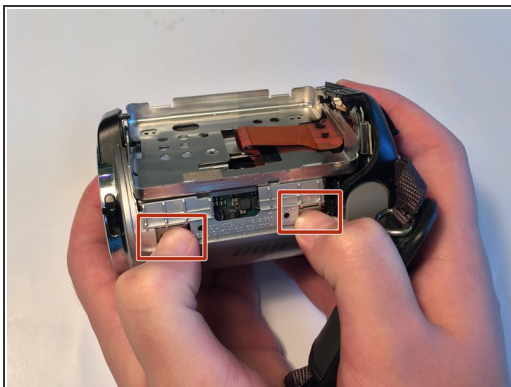
- Carefully unplug the flex cable from the hard drive.

Step 8 — Internal Components



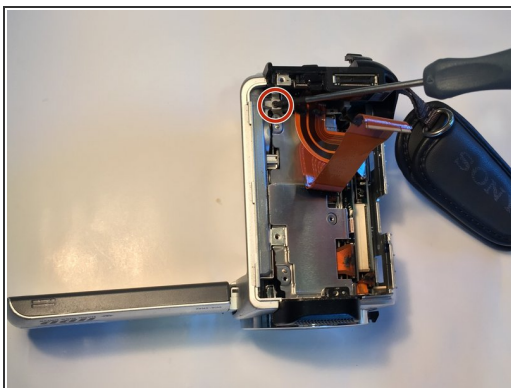
- Remove the four 3mm Phillips #00 screws from under the hard drive.

Step 9



- Press in on the two tabs as shown and lift the metal plate up and off the camera.
- ⓘ Even with all the screws removed, this part will require some force to remove.

Step 10



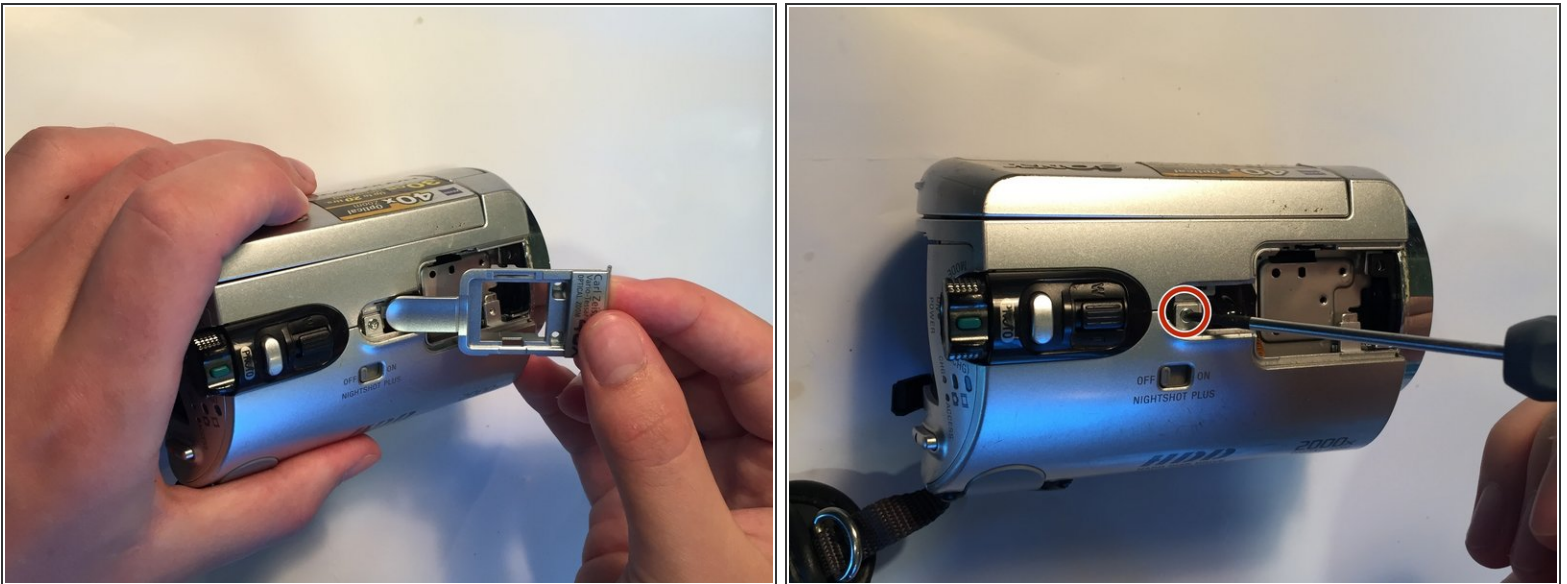
- Remove the two 4mm Phillips #00 screws from the underside of the camera.
- Remove the 2 mm Phillips #00 screw from the screen hinge.

Step 11



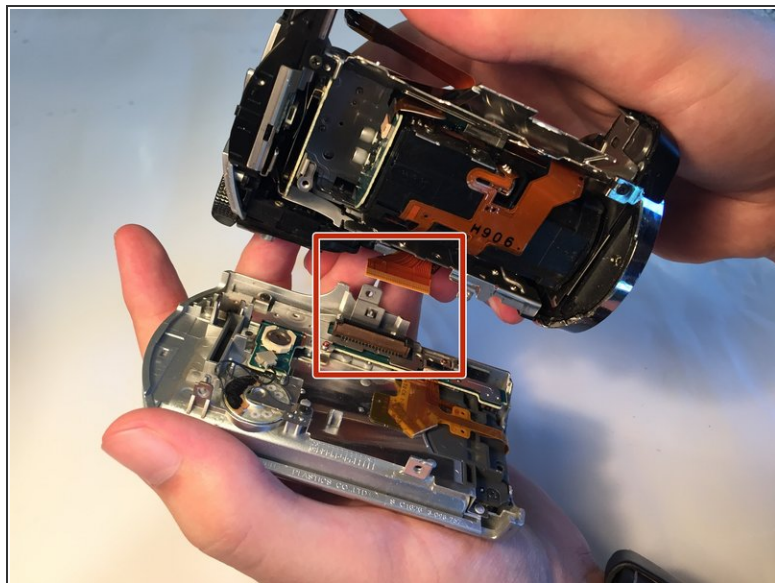
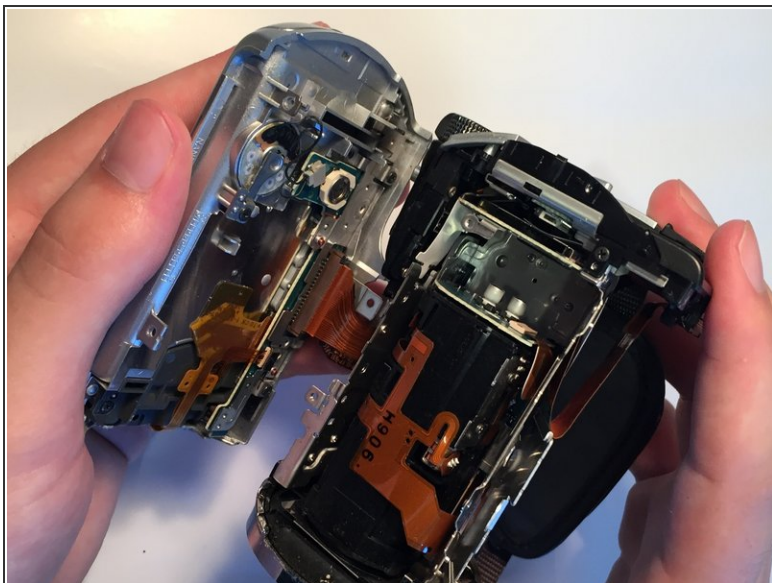
- Use the plastic opening tool to remove the plastic cover from the top of the camera.
- Remove the two 3mm Phillips #00 screws from underneath the plastic cover.

Step 12



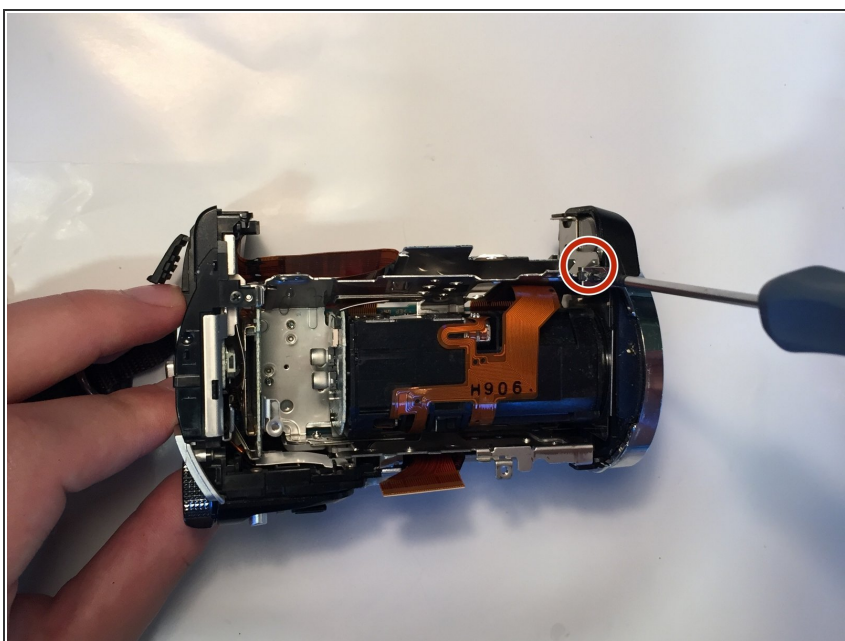
- Remove the second plastic cover from the top of the camera.
- Remove the 4mm Phillips #00 screw from underneath the cover.

Step 13



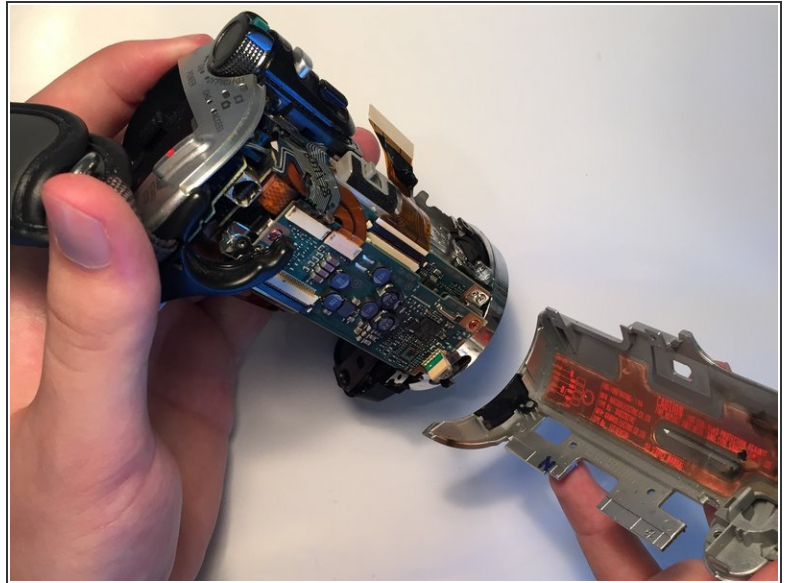
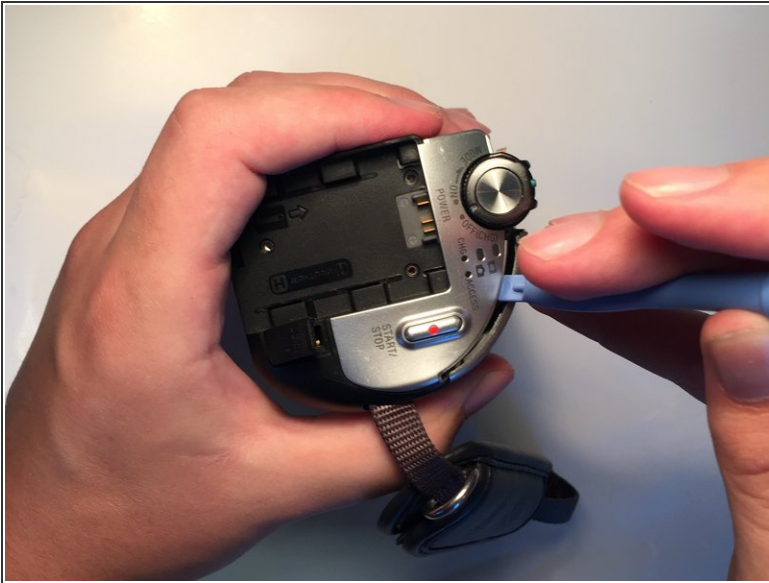
- Carefully pry the screen assembly apart from the main body of the camera.
- Unplug the flex cable from the screen assembly.
- ⓘ Even with all the screws removed, this part will require some force to remove.

Step 14 — Lens



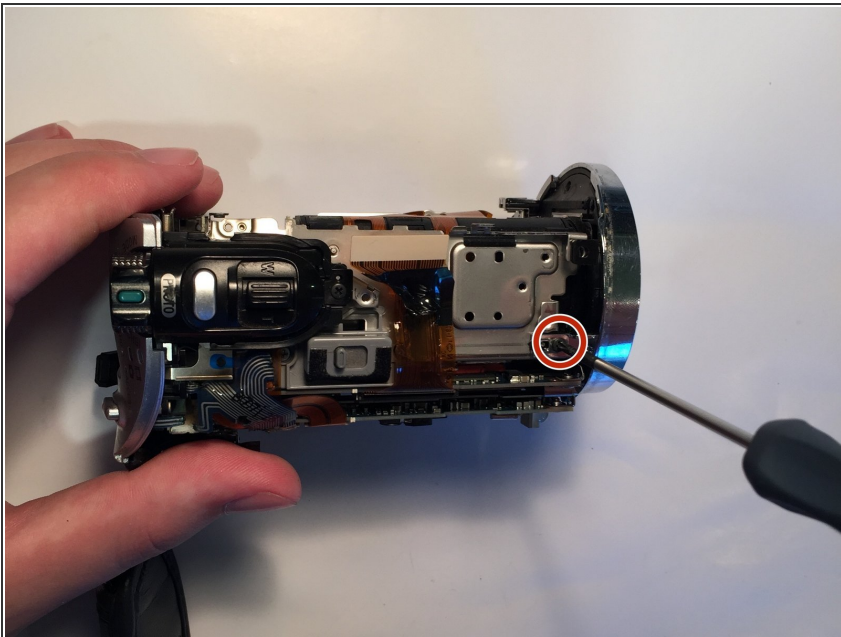
- Remove the 3mm Phillips #00 screw from the underside of the camera near the lens housing.

Step 15



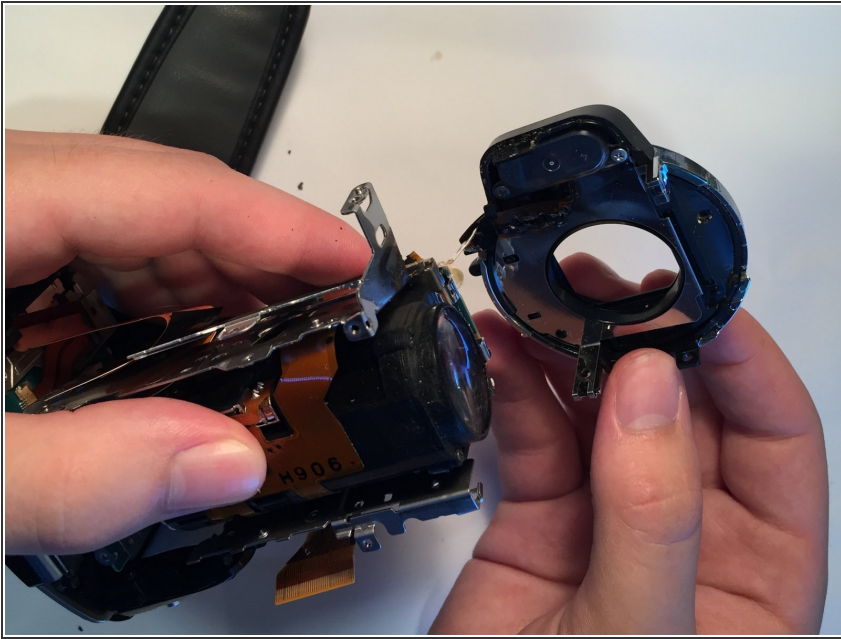
- Use the plastic opening tool to pry the side casing off the camera.

Step 16



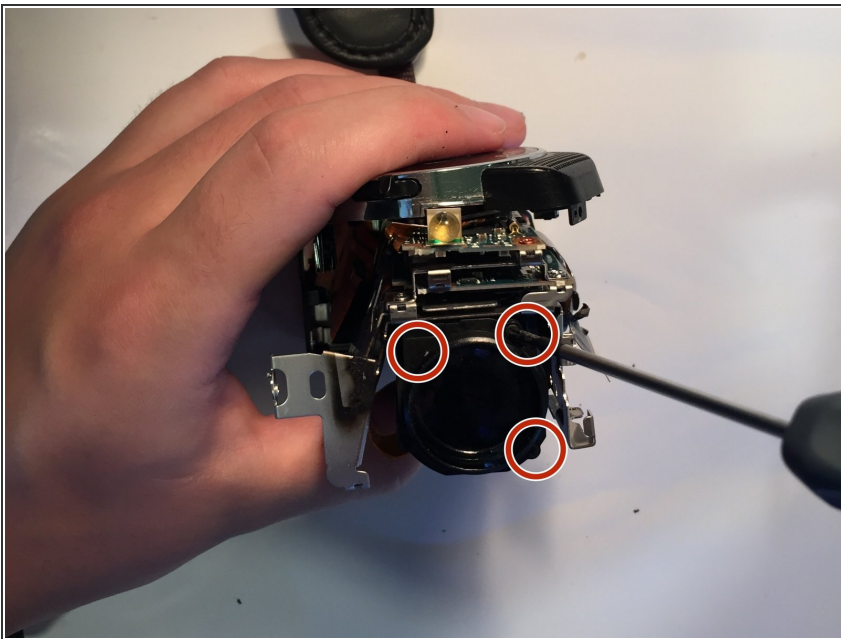
- Remove the final 3mm #00 Phillips screw from the lens housing.

Step 17



- Remove the lens housing from the camera.

Step 18



- Remove the three 2mm Phillips #00 screws from around the lens.

Step 19



- Remove the lens from the camera.

To reassemble your device, follow these instructions in reverse order.