



Repairing a Stuck Flint Wheel on a Zippo Lighter

This guide goes step by step through how to fix a stuck flint wheel on your Zippo lighter.

Written By: Joseph Yoo



INTRODUCTION

Is your Zippo lighter not working because the flint wheel is stuck? Don't want to invest money in a brand new lighter? Your flint wheel is stuck because the steel rod it strikes is stuck at an awkward position against the wheel causing the wheel to be immobile. Find out how to loosen the steel rod and fix your Zippo!



TOOLS:

- [Flathead Screwdriver](#) (1)
-

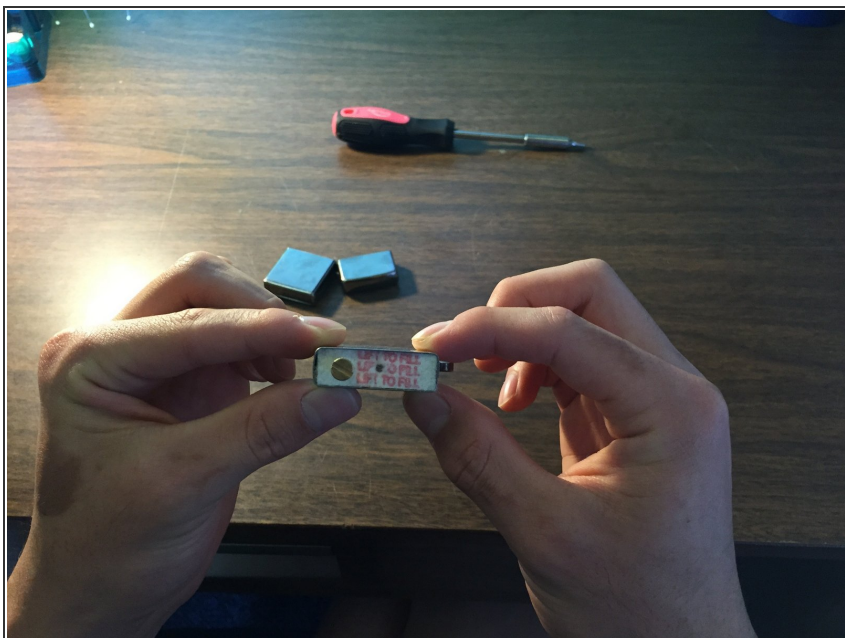
Step 1 — Repairing a Stuck Flint Wheel on a Zippo Lighter



- Open your Zippo lighter and take the inside component out of the shell simply by pulling it out.

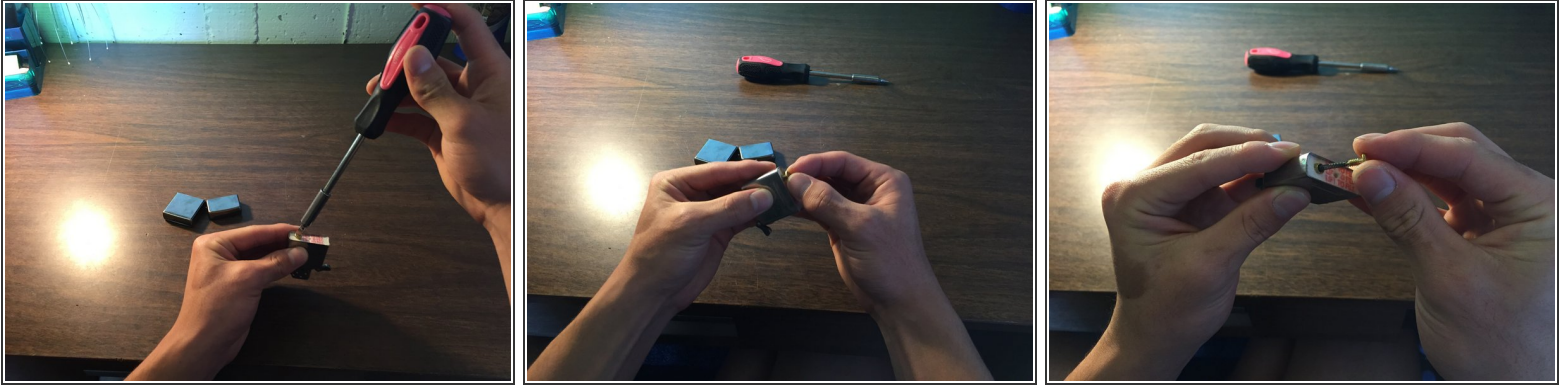
⚠ Be careful of the fluid that already might be in the lighter, it might leak out.

Step 2



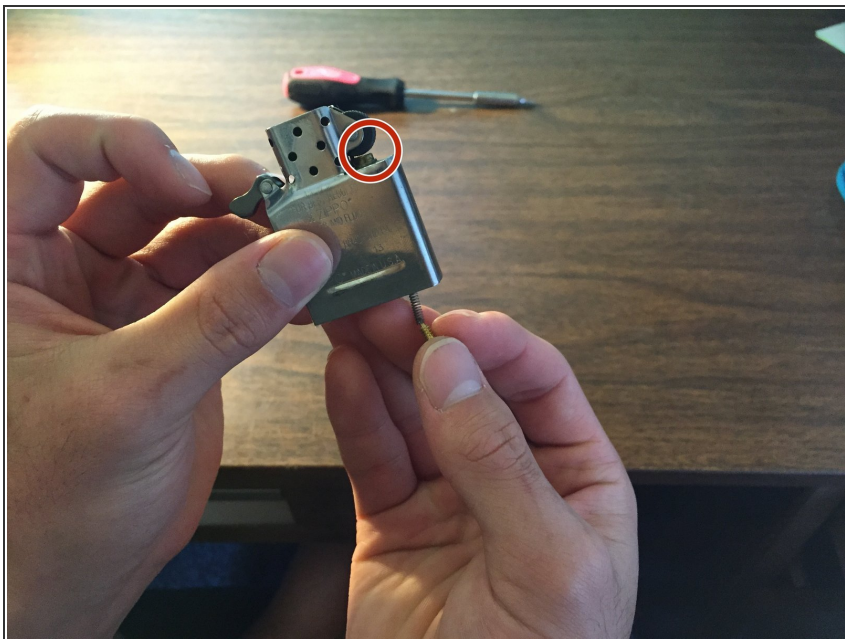
- Flip the lighter to face the bottom of the unit and locate the brass colored screw.

Step 3



- Loosen the brass screw with the flat head screwdriver
- Unscrew the rest of the brass screw using your hand.
- Unscrew the brass screw until it comes off and the spring beneath shows but do not take the spring all the way out.

Step 4



- Pull the brass screw and spring out about a centimeter or two to unhinge the steel rod located beneath the flint wheel so that the rod and the wheel are not touching.
- ⓘ If necessary, tap the unit to unhinge the steel rod

Step 5



- Follow the steps backwards to reassemble the unit and check to see if the flint wheel is unstuck.

You have now fixed your flint wheel! Enjoy your Zippo Lighter!