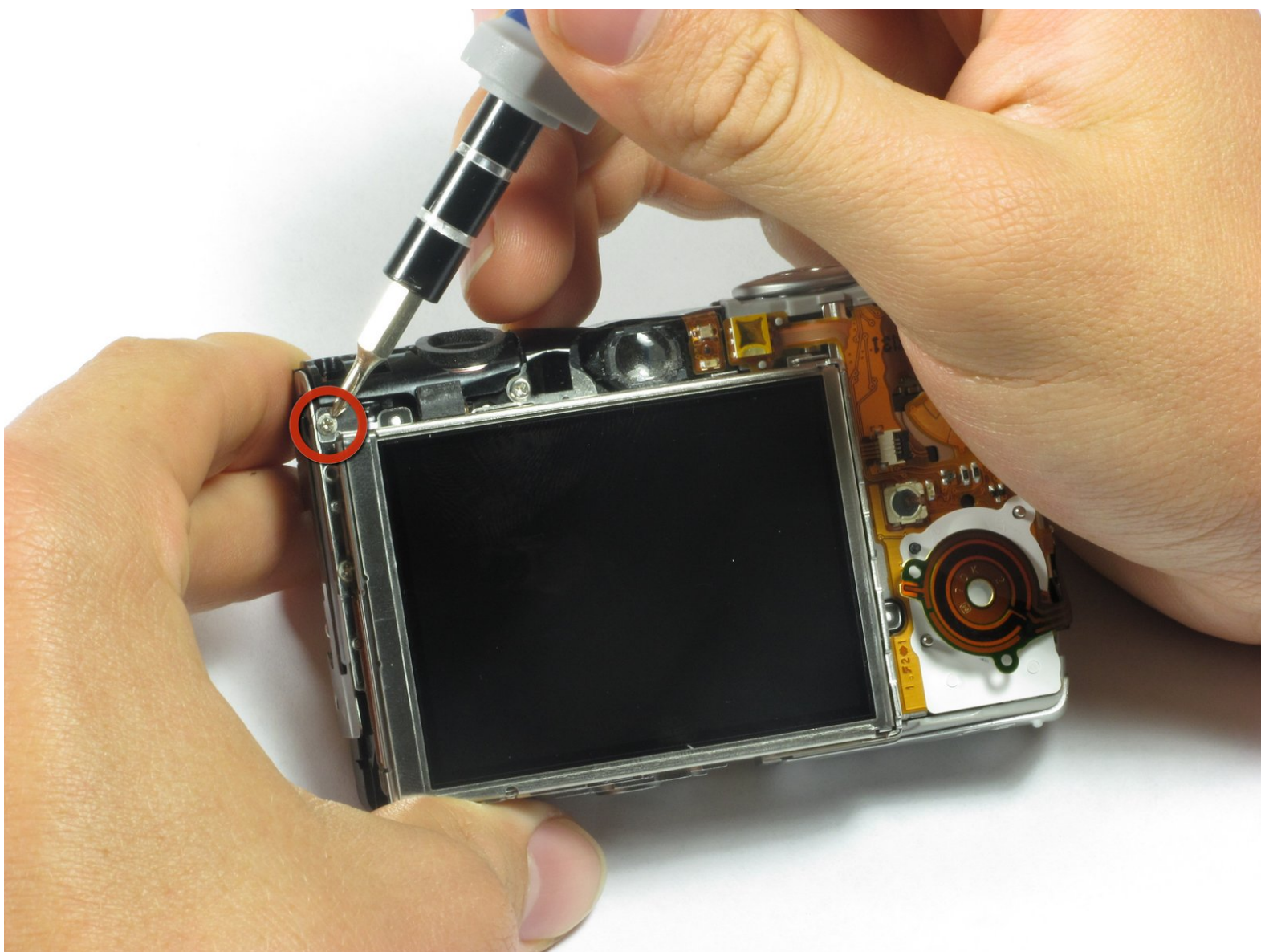




# Canon PowerShot SD850 IS LCD Screen Replacement

Written By: Peter Tran



---

## INTRODUCTION

Use this repair guide to replace a broken LCD screen on your Canon PowerShot SD850 IS.

---

### **TOOLS:**

- [Phillips #00 Screwdriver](#) (1)
  - [iFixit Opening Tools](#) (1)
-

## Step 1 — Battery



- Slide the light grey tab toward the edge of the camera using your fingernail.
- Pull the light grey tab up to open the door.
- ❗ These photos do not show the camera's memory card or battery, which should be visible inside.

## Step 2



- Slide the small brown tab toward the edge of the camera using your fingernail.
  - Let go of the brown tab when the battery pops up.
  - Grab battery and pull straight up to remove from holder.
- 👉 When inserting the battery, orient it so that the terminals connect.

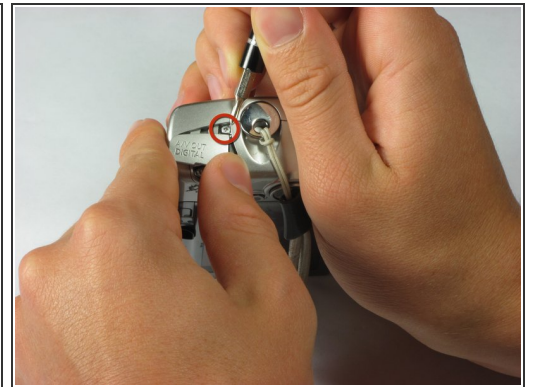


### Step 3 — Case



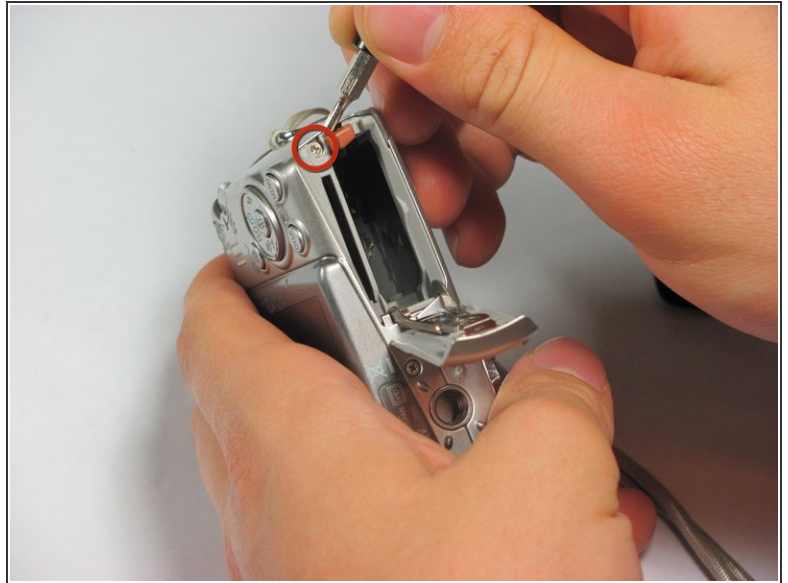
- Remove the following 4 screws:
  - Two 2.8 mm Phillips #00 at the bottom of the camera.
  - Two 2.75 mm Phillips #00 on the opposite side of the wrist strap.

### Step 4



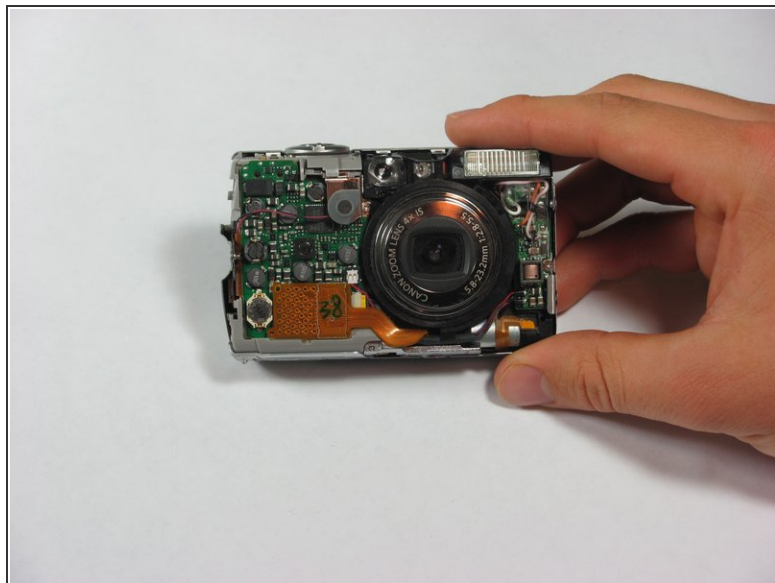
- Open the A/V OUT DIGITAL flap on the side of the wrist strap.
- Remove the 2.75 mm Phillips #00 under the A/V OUT DIGITAL flap on the side of the wrist strap.

## Step 5



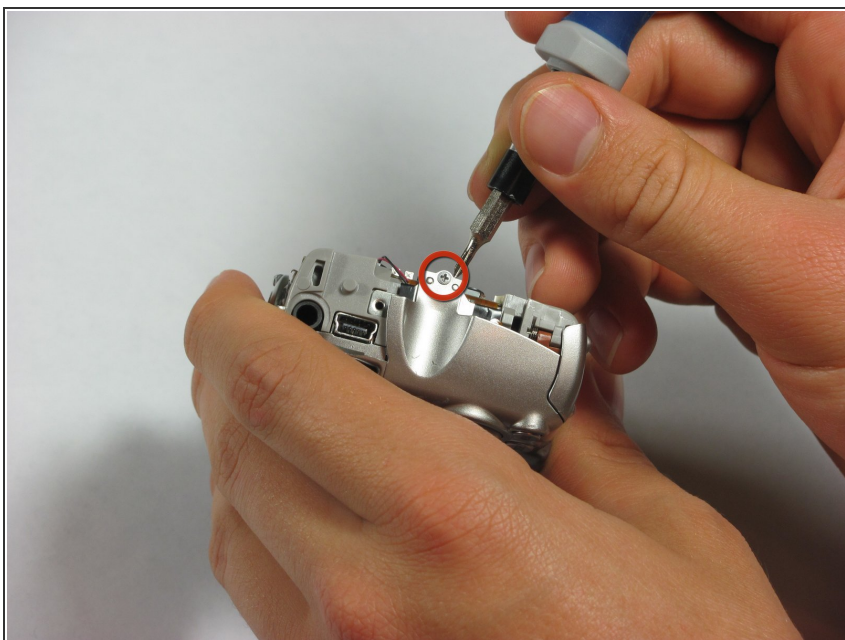
- On the bottom of the camera, use your fingernail to slide the light gray tab towards the edge of the camera.
- Slide light gray door and pull up to open the door.
- Remove the 8.35 mm Phillips #00 next to the brown tab that holds the battery.

## Step 6



- Gently pull the front cover straight out from the camera. This will expose the wiring on the front of the camera.

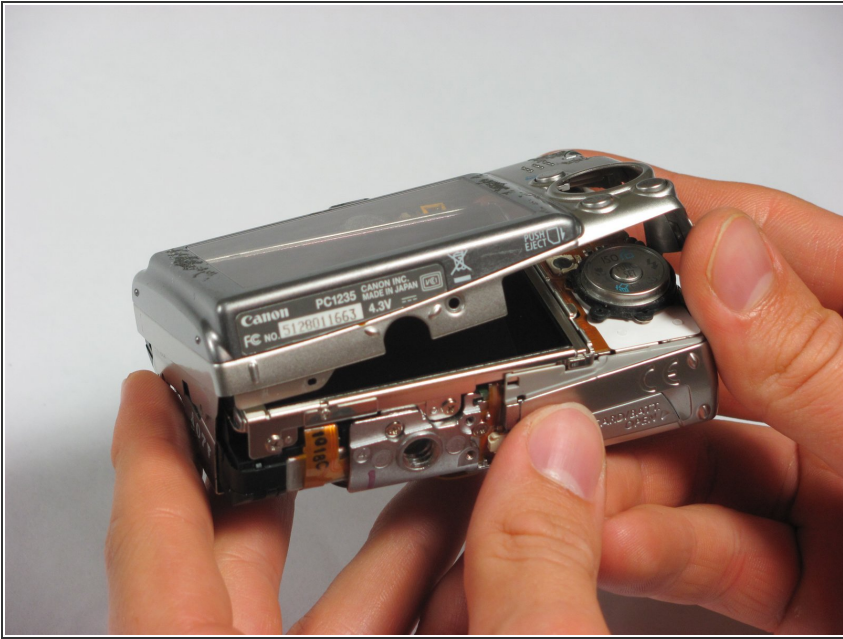
## Step 7



- Remove the 2.75 mm Phillips #00 next to A/V OUT DIGITAL.

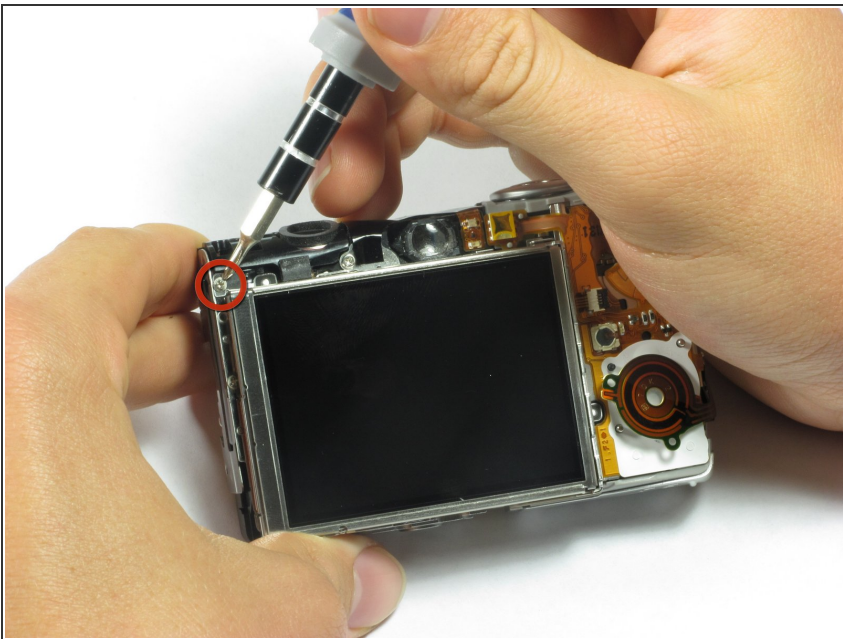


## Step 8



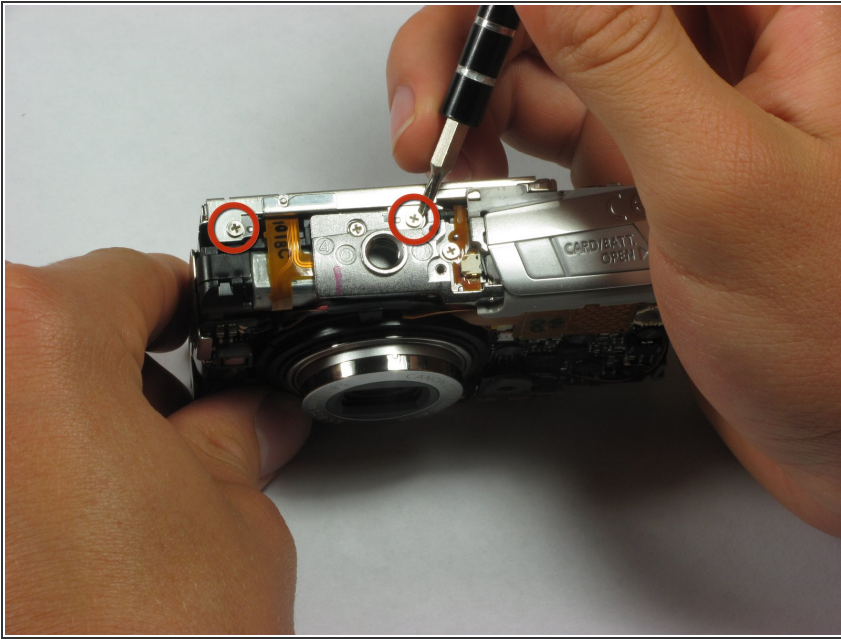
- Slide the back casing (with the screen protector) off to reveal the LCD and back wiring.

## Step 9 — LCD Screen



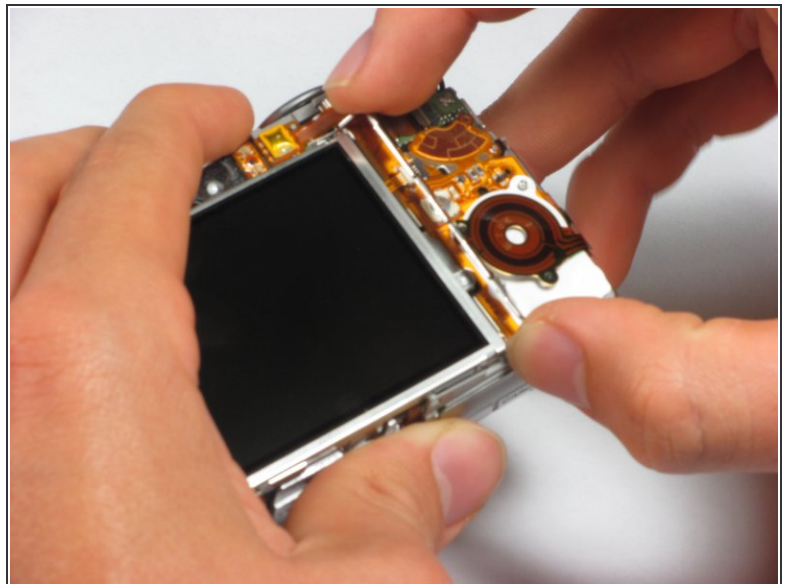
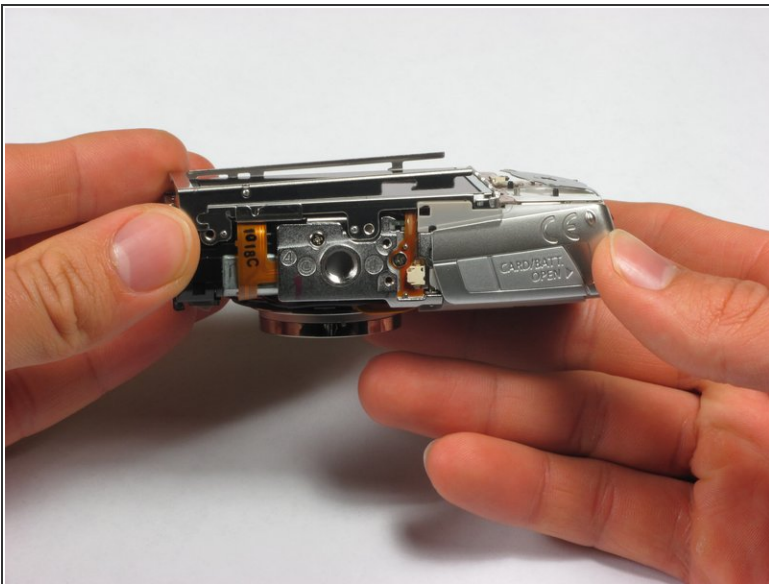
- Remove the 1.75 mm Phillips #00 located at the top left of the LCD screen.

## Step 10



- Remove the two 3.4 mm Phillips #00 located at the bottom of the camera.

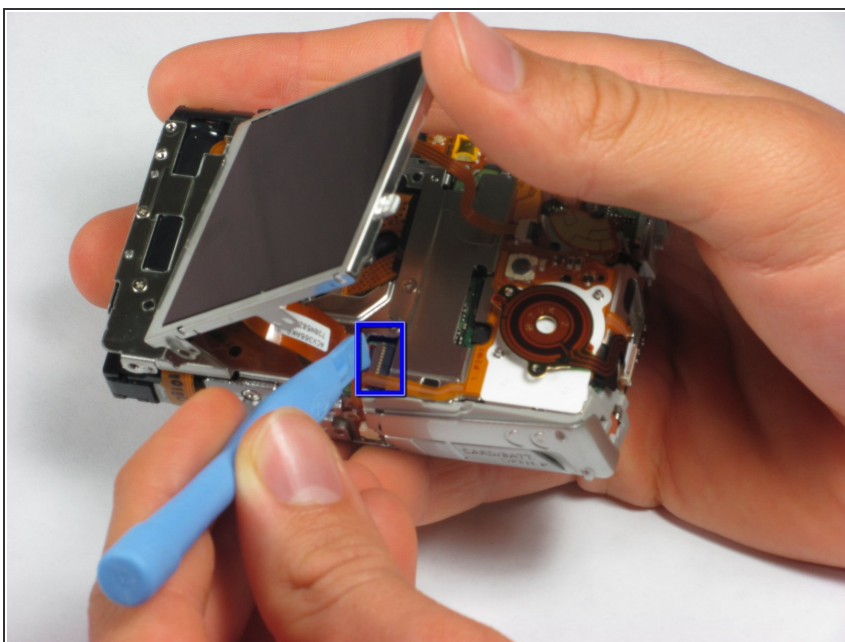
## Step 11



- Remove the two metal frames that hold the LCD panel in place.

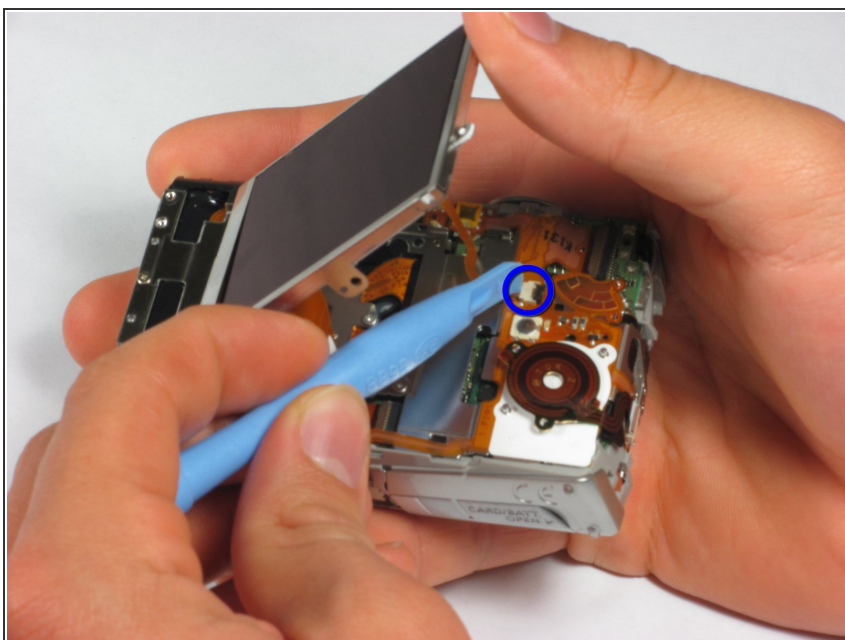


## Step 12



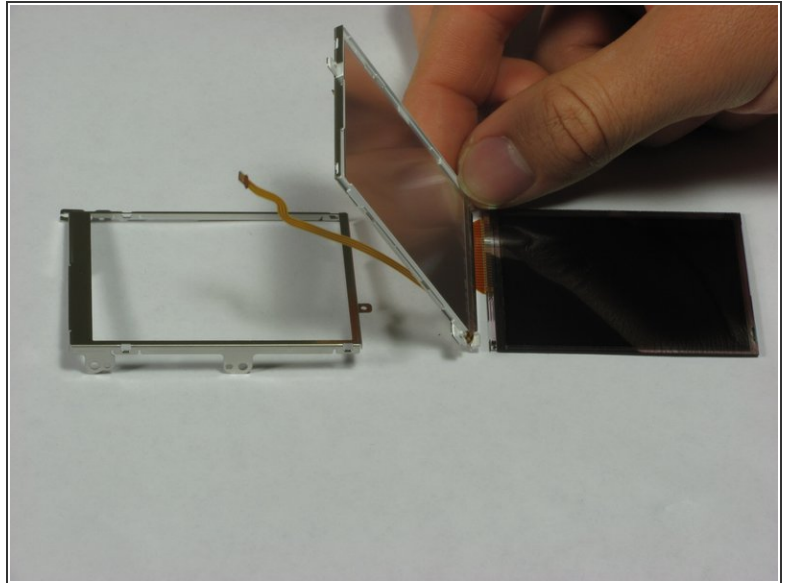
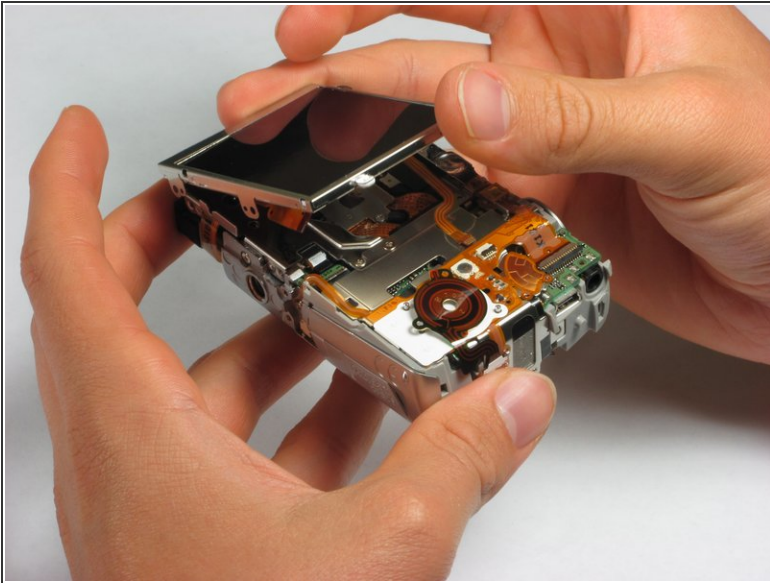
- The LCD screen should now only be attached by two LCD data cables.
- Lift the screen from the left side and use a spudger or a small flat head screwdriver to flip the black portion of the connector upward to unlock it.
- Carefully slide the data cable out of the connector.

## Step 13



- The LCD should still be connected by the backlight cable.
- To remove the backlight cable, use a spudger or a small flat head screwdriver to unlock the backlight cable.
- Carefully slide out the backlight cable.
- The LCD screen can now be fully detached from the camera body.

## Step 14



- The LCD screen and housing are now in three pieces:
  - LCD screen
  - LCD screen frame
  - LCD back housing
- The LCD screen itself can now be removed and fixed/replaced.

To reassemble your device, follow these instructions in reverse order.