



RCA RCT6272W23 Motherboard Replacement

In this guide, you will learn how to replace the motherboard on a RCA RCT6272W23.

Written By: Stephen Radachy



INTRODUCTION

In this guide, you will learn how to replace the motherboard on a RCA RCT6272W23.



TOOLS:

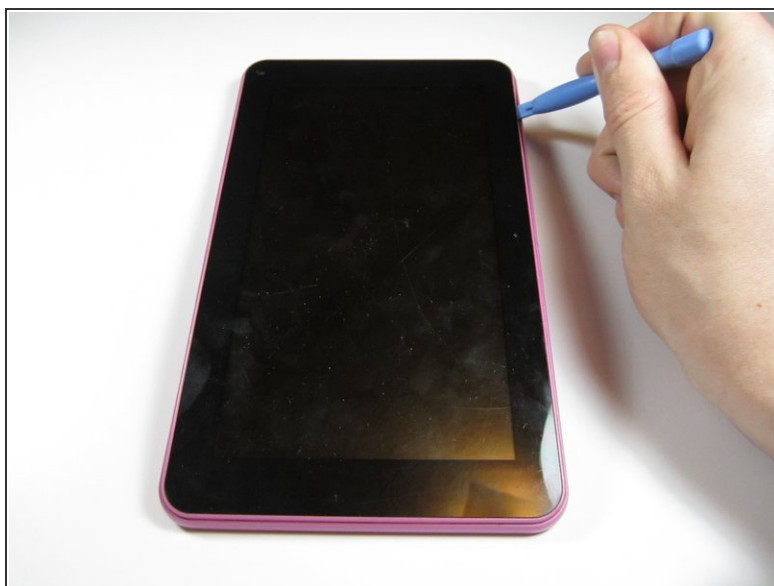
- [Phillips #00 Screwdriver](#) (1)
 - [iFixit Opening Tools](#) (1)
 - [Soldering Iron](#) (1)
-

Step 1 — Disassembling RCA RCT6272W23 Case



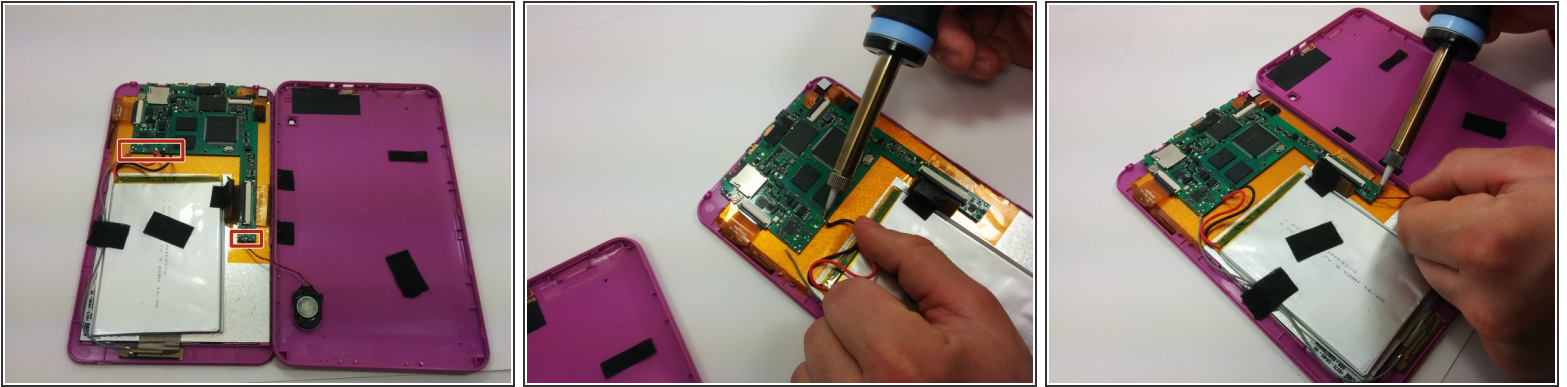
- Use a Phillips #00 screwdriver to remove both 4.1 mm screws at the top of the device which hold it together.

Step 2



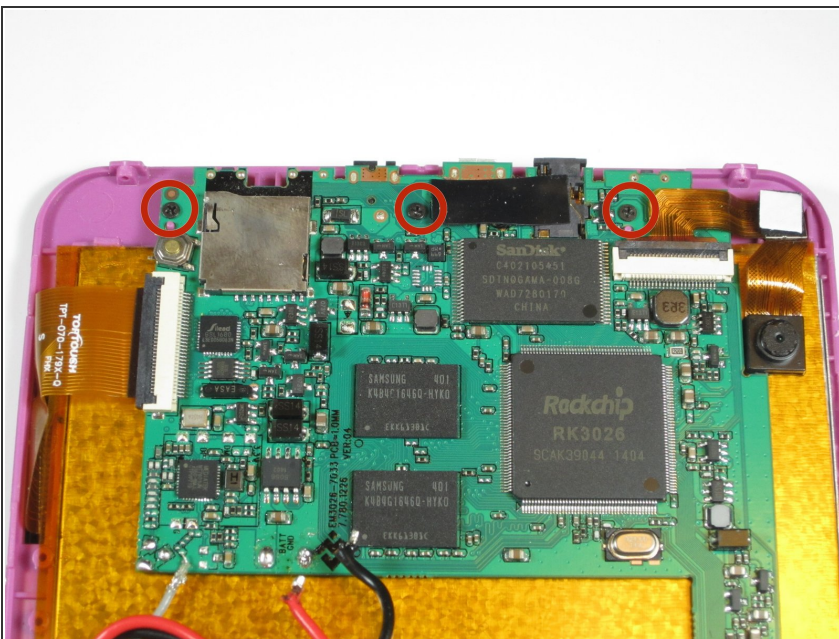
- Press the plastic opening tool into the space between the front and back portions of the case.
 - Run it along the perimeter of the device to unhook the plastic tabs.
 - Gently pull both sides apart.
- ⚠ The speaker is connected to the back cover, so be careful when separating.

Step 3 — Motherboard



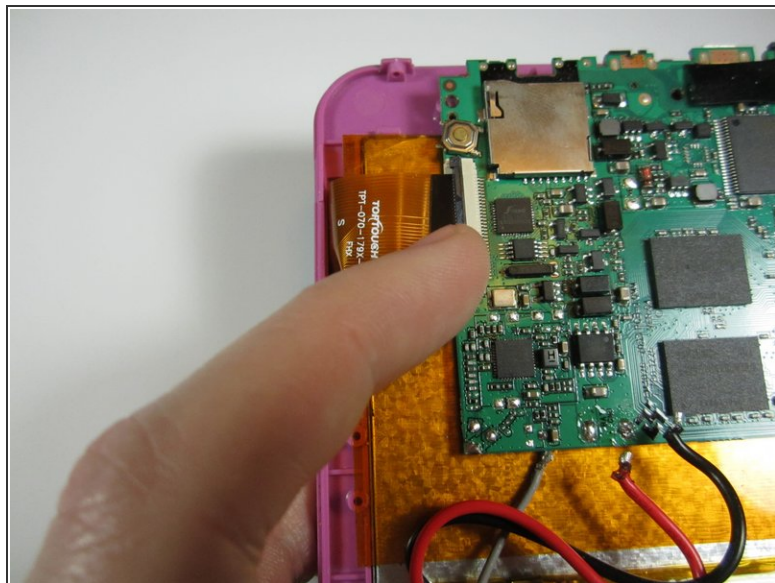
- Use a soldering iron to remove the soldered connections on the motherboard
- ⚠ For your safety and to ensure a correct repair, be sure to exercise caution when using the soldering iron.
- ℹ For more information about soldering, check out this [guide](#).

Step 4



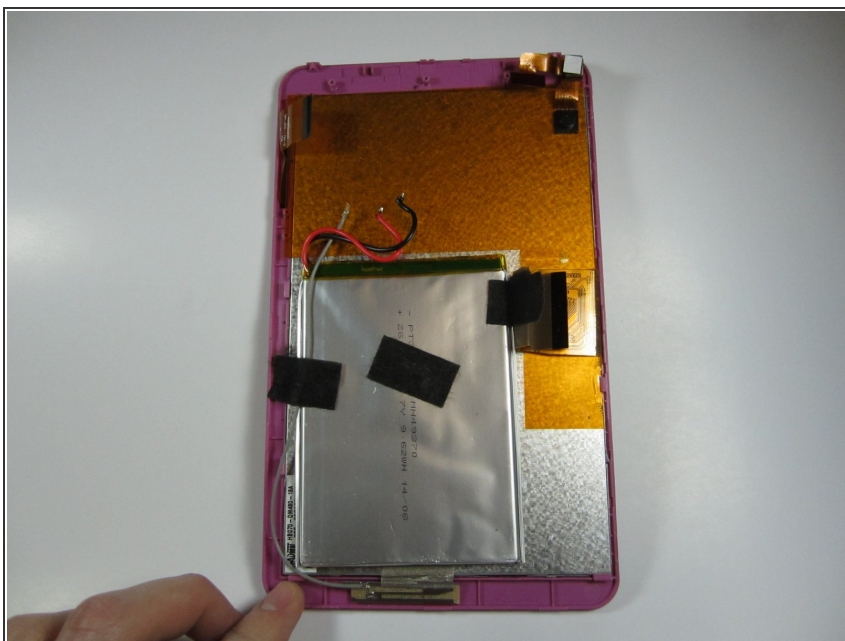
- Use a philips #00 screwdriver to unscrew the three 4.064mm screws which attach the motherboard to the front of the device.

Step 5



- Use your fingers to pop the three black tabs up to release the flat plastic data transfer cables.

Step 6



- Pull up the motherboard from the rest of the body.

To reassemble your device, follow these instructions in reverse order.