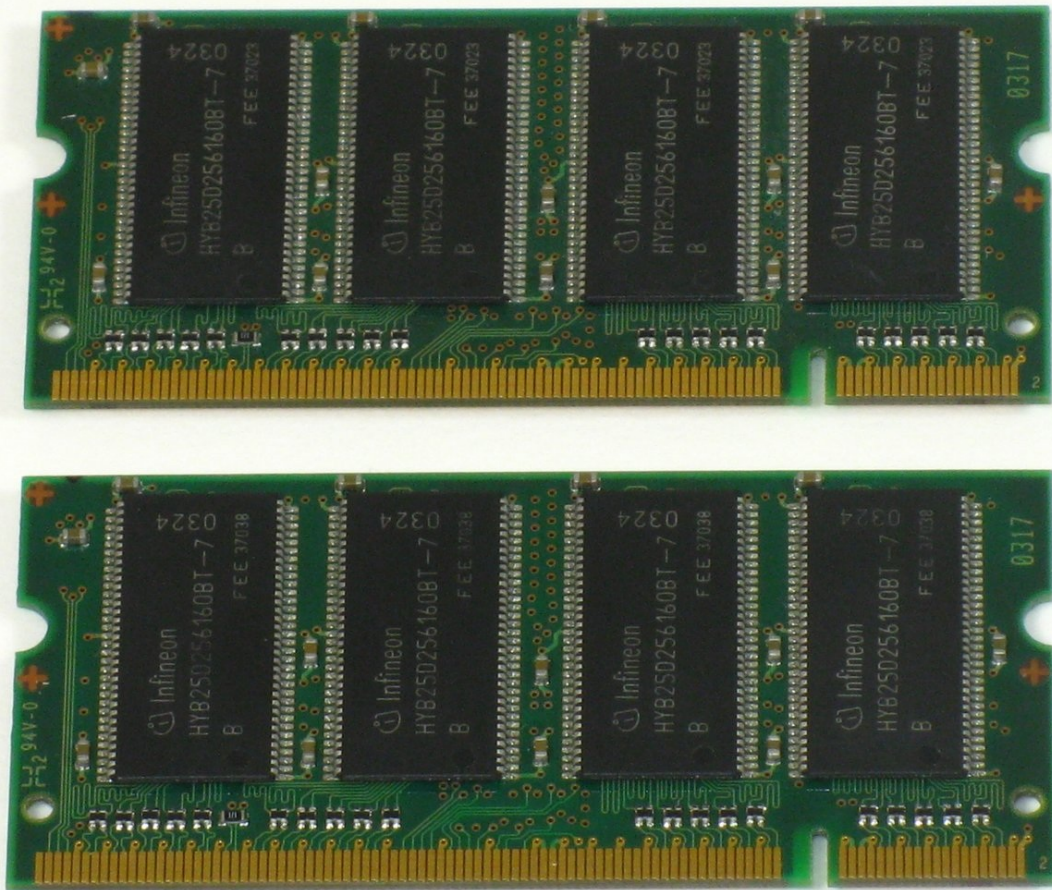




# Gateway 600YG2 Memory Replacement

Removal of on-board memory.

Written By: Elizabeth Mazer



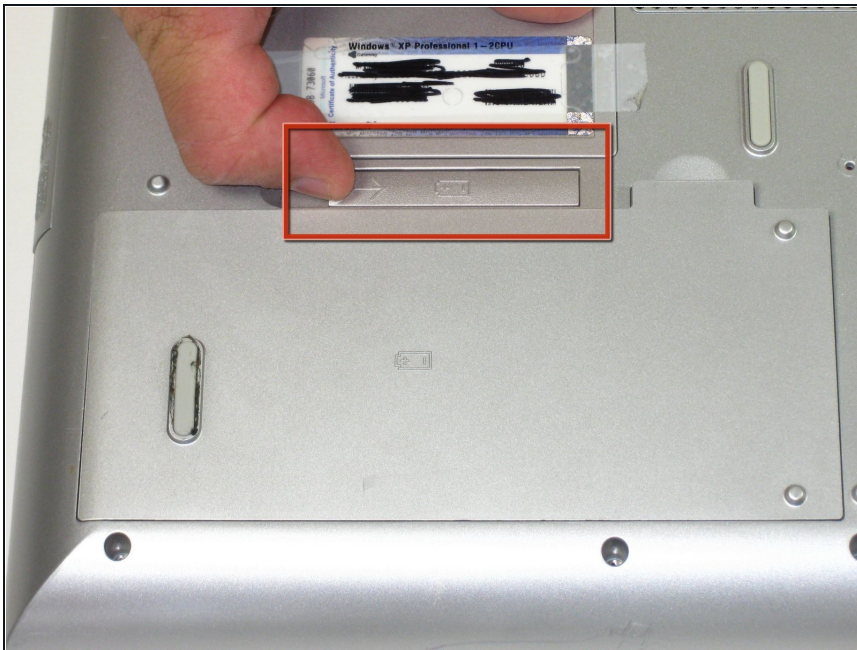
# INTRODUCTION

Removal of on-board memory.

## TOOLS:

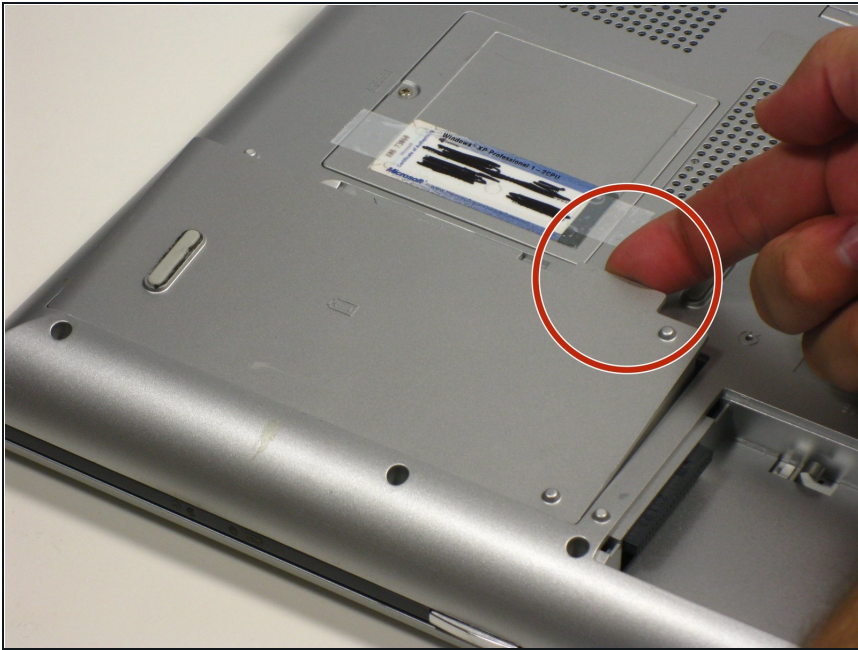
Phillips #0 Screwdriver (1)

### Step 1 — Battery



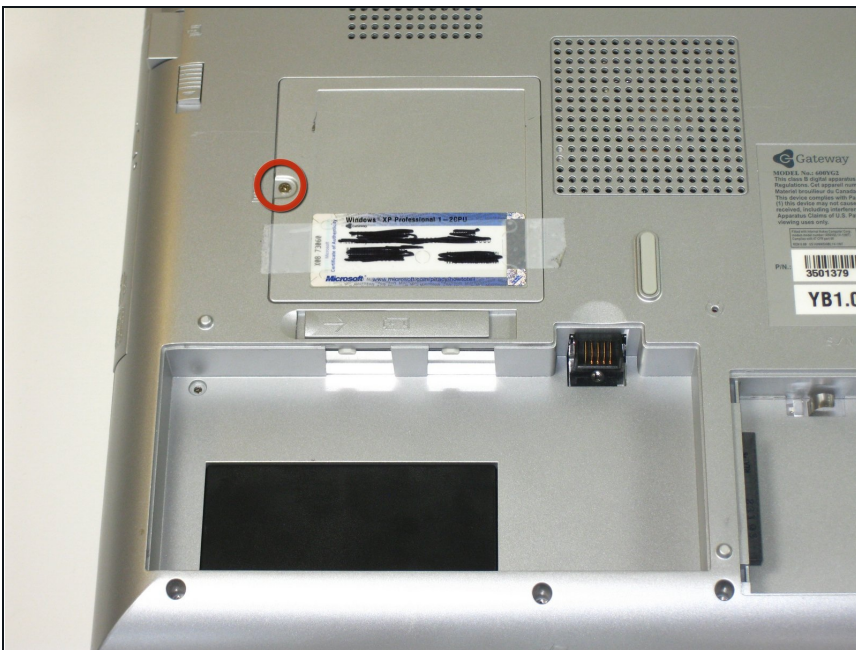
- Flip the laptop over.
- Slide the battery release tab to the right with your index finger to open the battery cover.

## Step 2



- Remove the battery cover using the tab on the right side.
- Take the battery out with your index finger.

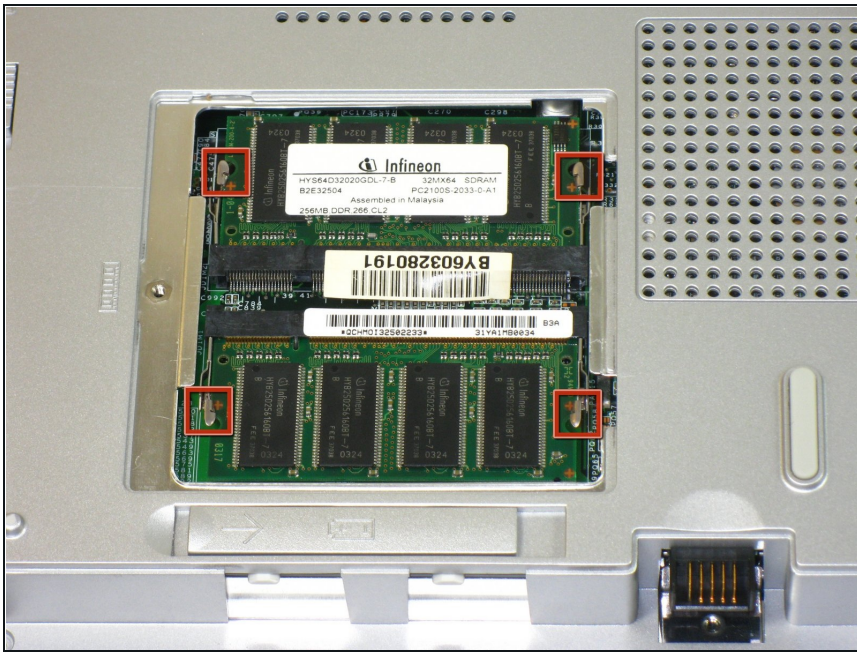
## Step 3 — Memory



- Remove access cover by unscrewing captive screw.

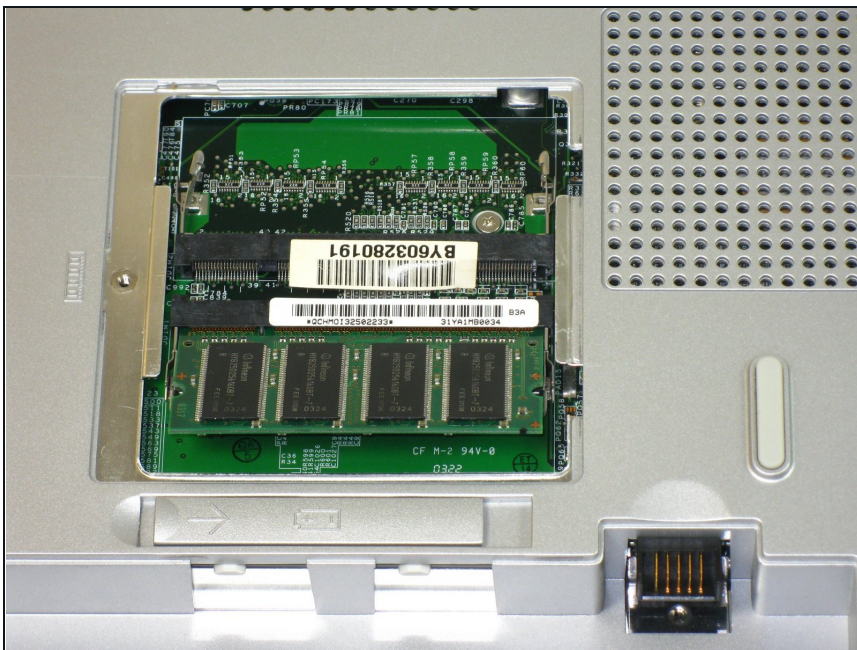


## Step 4



- Slide locking tabs outward

## Step 5



- Slide memory module out

To reassemble your device, follow these instructions in reverse order.

