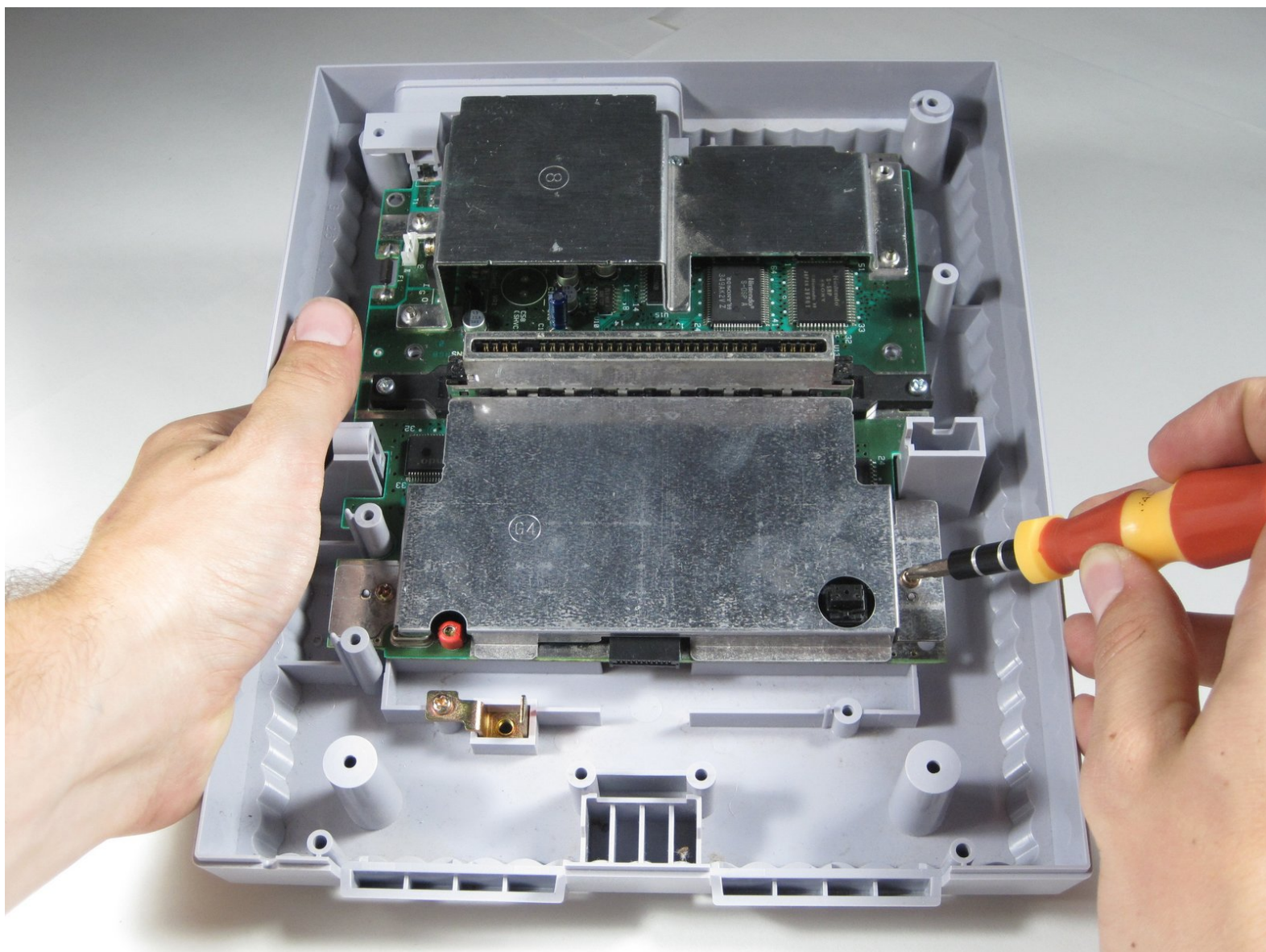




Super Nintendo Motherboard Replacement

Replace a faulty motherboard

Written By: Melina

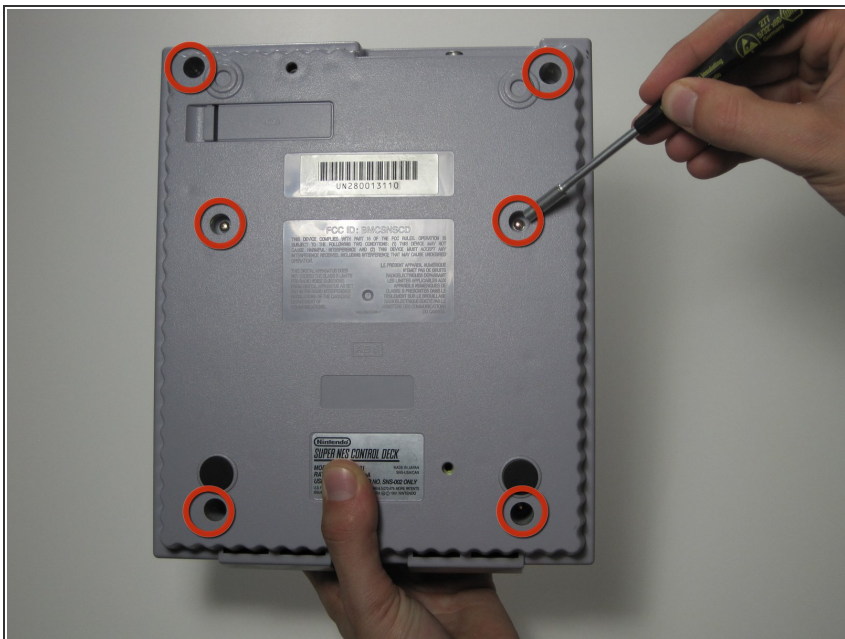




TOOLS:

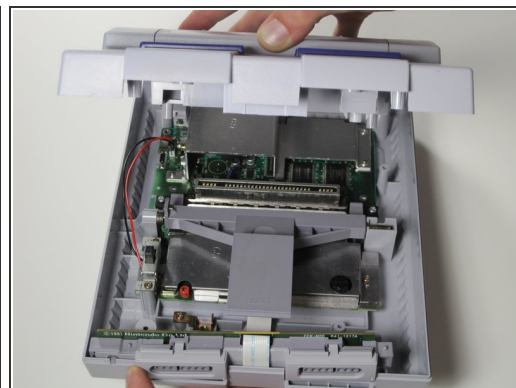
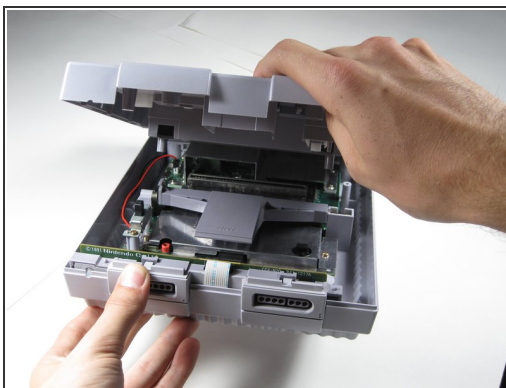
- [Gamebit 4.5mm](#) (1)
 - [Phillips #2 Screwdriver](#) (1)
-

Step 1 — Outer Case



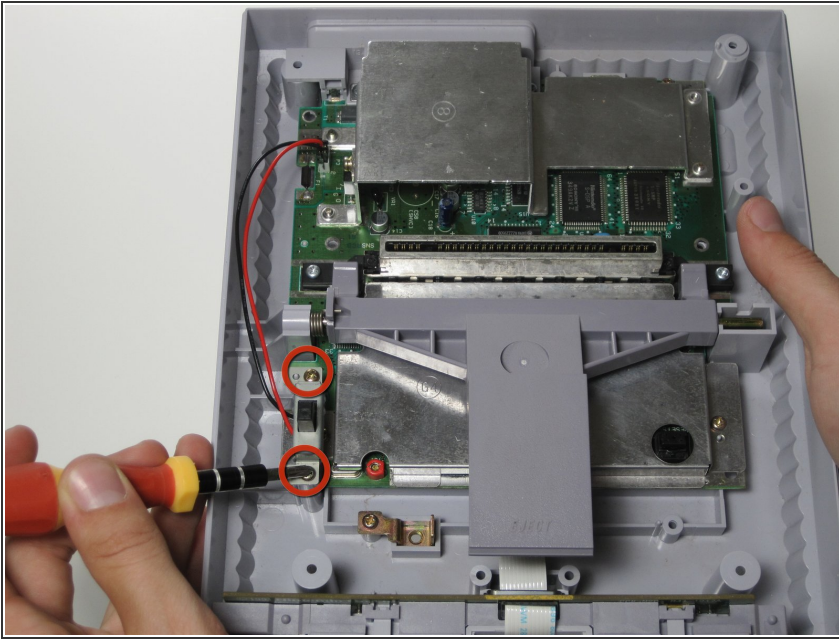
- Remove the six screws located on the underside of the system using the Gamebit 4.5mm screwdriver.

Step 2



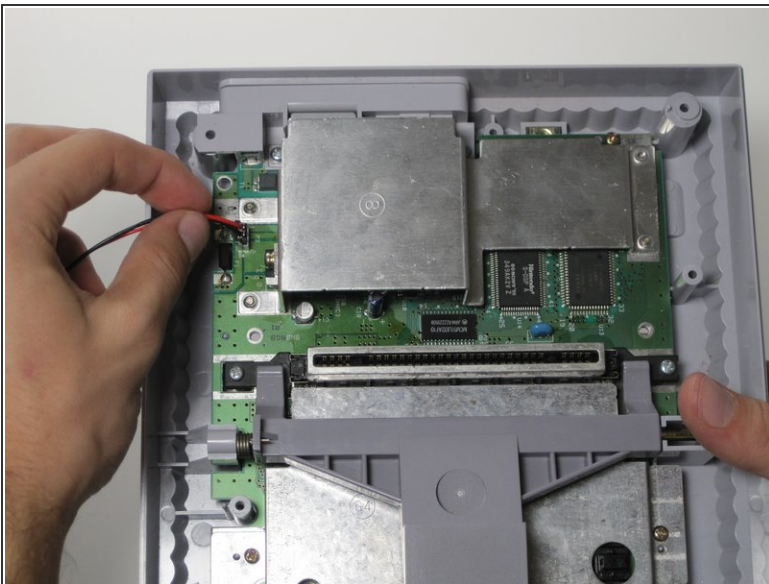
- Carefully flip the unit back over.
- Locate the seam. Lift and separate the upper half of the case from the lower half of the case.

Step 3 — Power Switch



- Remove the two 11.7 mm Phillips #2 screws connecting the power switch to the motherboard.

Step 4



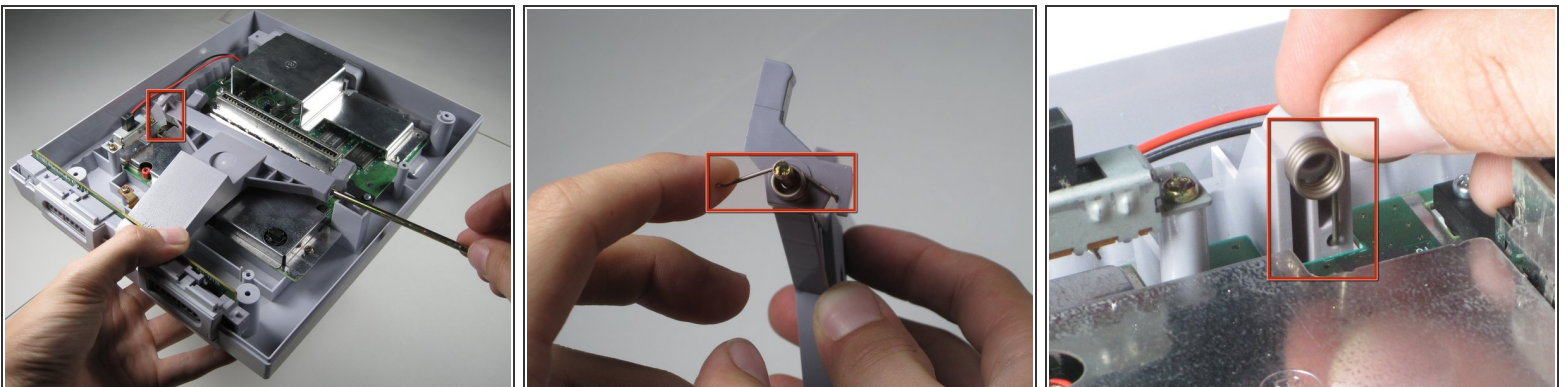
- ⓘ The power switch is connected to the motherboard near the top left of the console.
- Carefully pull the connector from its socket on the motherboard. You may need to wiggle it out as you pull.
- ⚠ Do not detach the connector by pulling on the wires. This could damage the wires or the socket.

Step 5 — Eject Button



- Lift the right side of the eject lever out of the housing.

Step 6

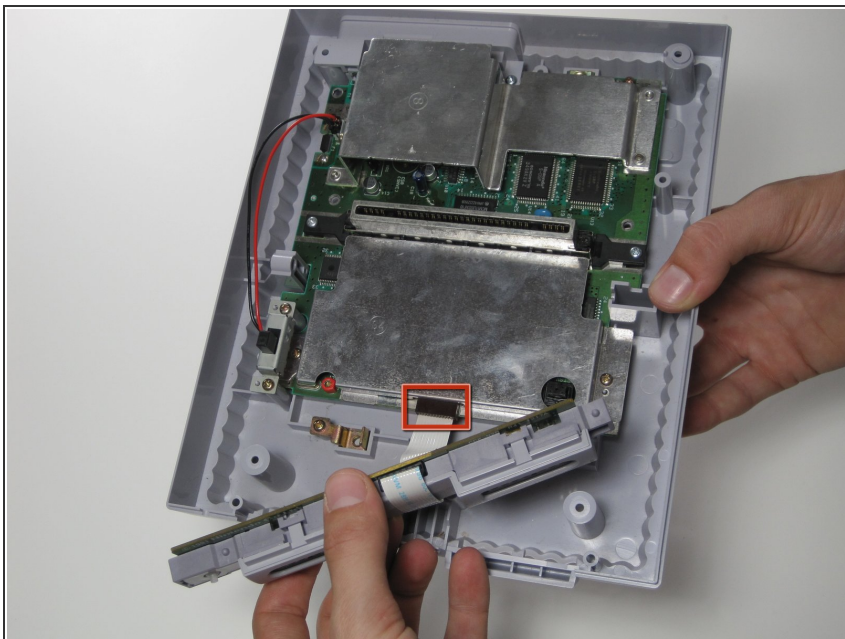


- Pull the metal bar out through the right side of the eject lever.

⚠ Make sure to keep track of the spring located on the left side of the lever as it may shoot off when removing the metal bar.

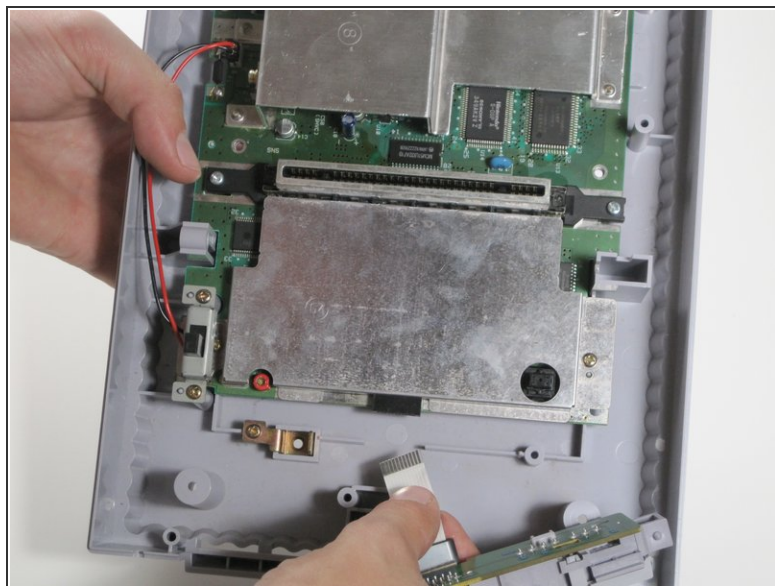
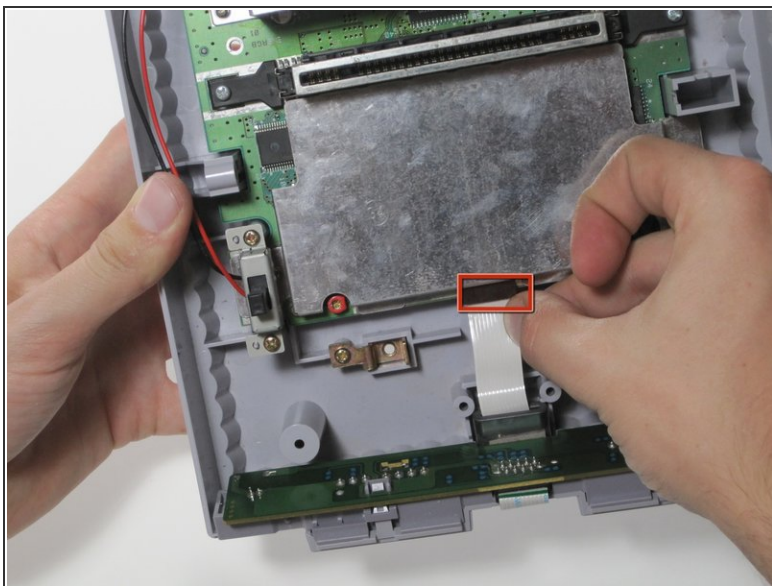
i When reassembling, the procedure becomes more difficult due to the spring (marked red). We recommend that one person hold the spring in place (picture 3) while another person slides the metal bar back into the left housing, and slide the eject lever onto the metal bar.

Step 7 — Controller Port



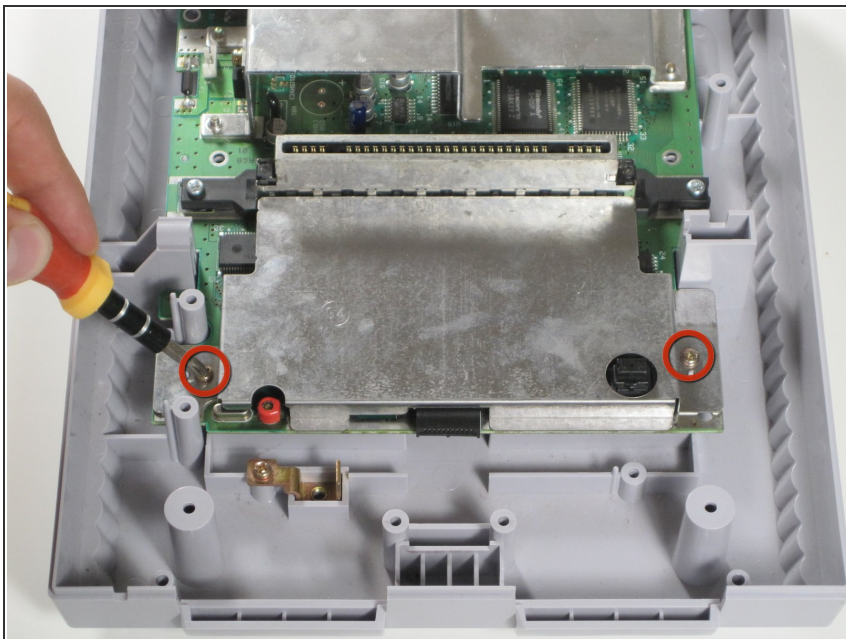
- Lift the controller ports out of the housing, this should be done without much force. Take note of the location of the ribbon cable connection.

Step 8



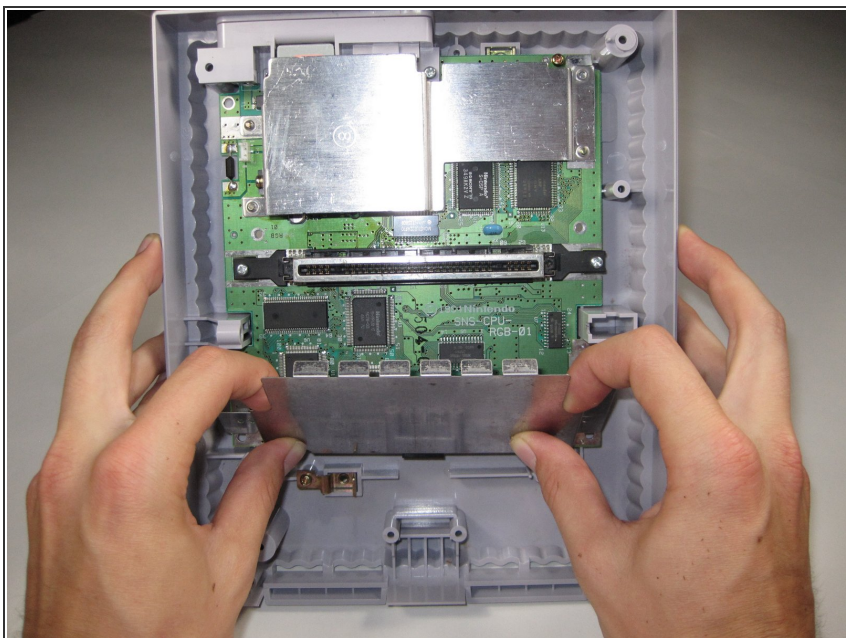
- Carefully remove the ribbon cable from its port.

Step 9 — Motherboard



- Remove the two Phillips two 11.6mm screws that connect the front shield to the motherboard.

Step 10



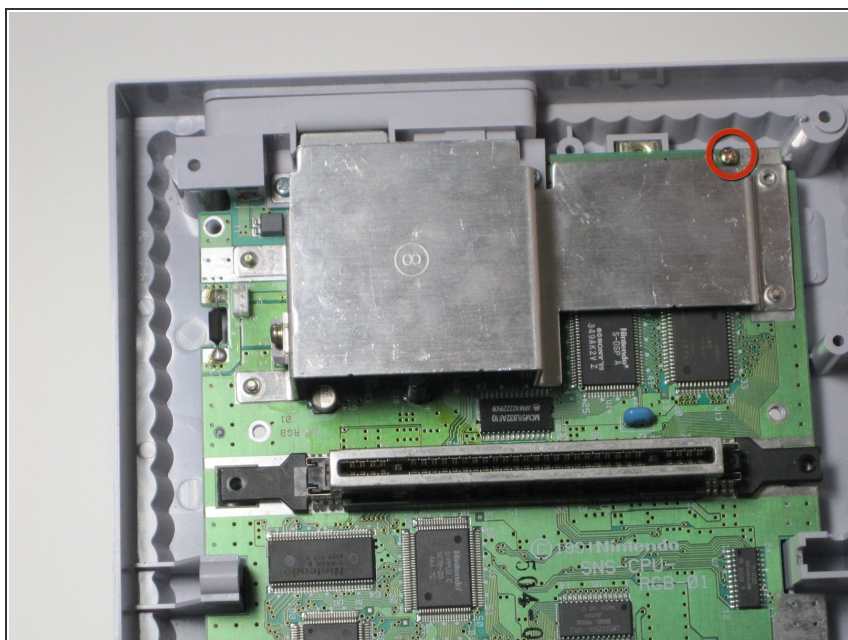
- Lift the front shield straight up to remove it from the motherboard.

Step 11



- Remove the two silver 15.6 mm Phillips #2 screws on either side of the 62 pin connector.

Step 12



- Remove the 11.8 mm Phillips #2 screw near the rear of the SNES.

Step 13



- Lift the motherboard straight up to remove it.

To reassemble your device, follow these instructions in reverse order.