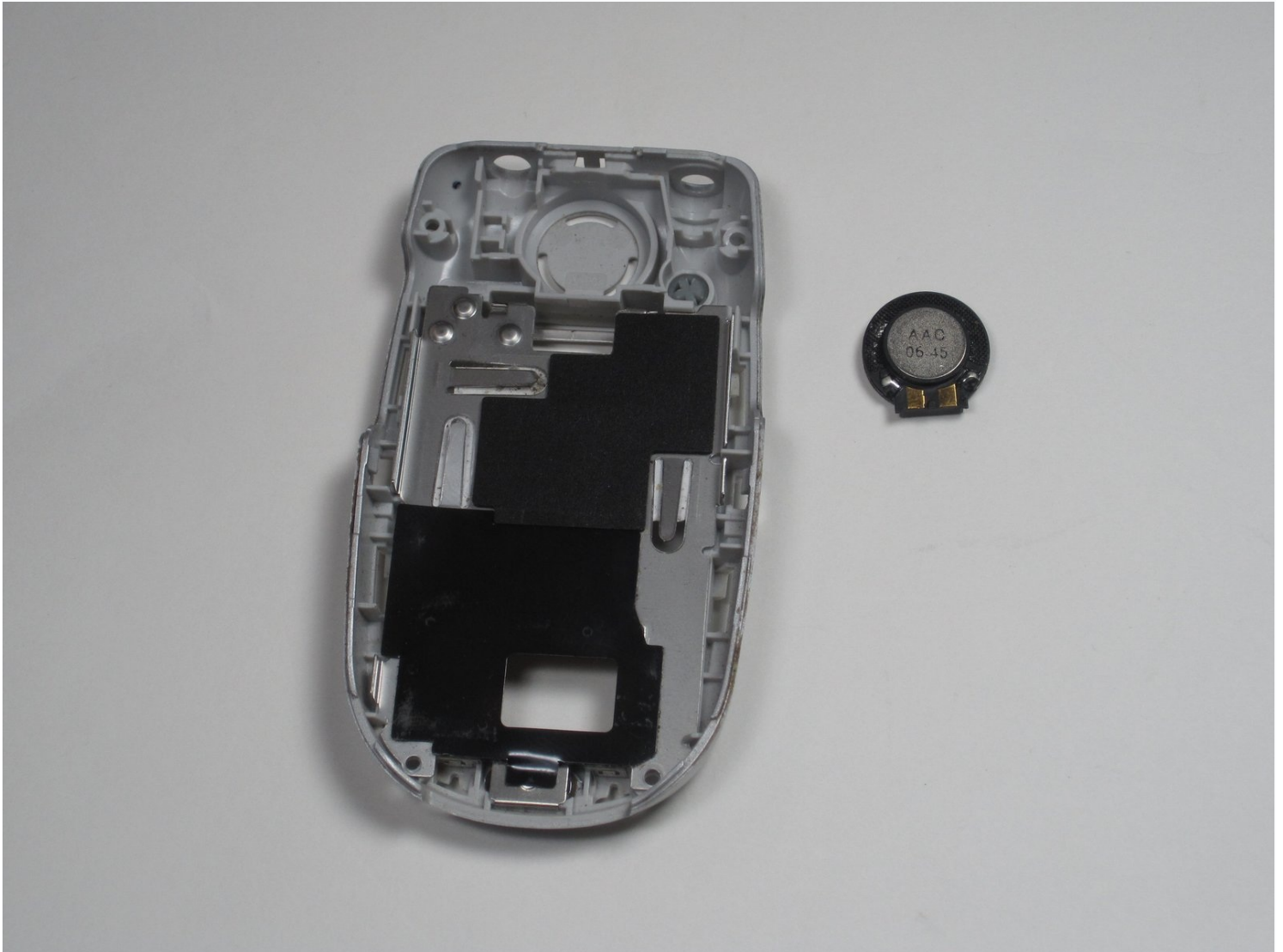


Motorola V557 External Speaker Replacement

This section will show how to remove the...

Written By: Alex Georges



INTRODUCTION

This section will show how to remove the external speaker from the intermediate back-casing of a Motorola V557 phone.

TOOLS:

Push Pin (1)

Spudger (1)

T6 Torx Screwdriver (1)

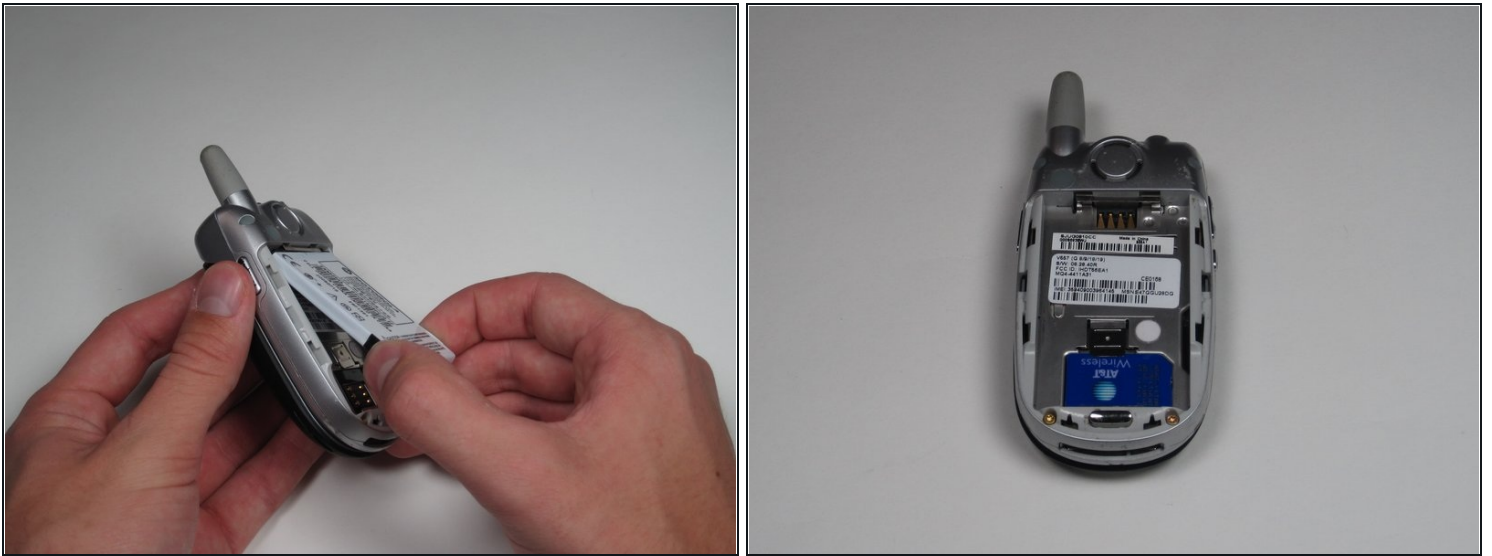
Tweezers (1)

Step 1 — Battery



- First, on the back of the phone find the silver button on the top left corner of the phone.
- Simultaneously push down the button and slide the back plate down to reveal the battery.

Step 2



- Grab the lower edge of the battery at the two bottom corners.
- Pull upward on the edges to remove the battery.

Step 3 — SIM Card



- Push the metal slider towards the top of the phone until it clicks out of the original position.
- Gently slide out and remove the SIM card.

Step 4 — Antenna



- Grip the antenna and twist it counterclockwise to loosen it.
- When it has been loosened all the way, pull gently to remove the antenna piece.

Step 5 — Rear Casing



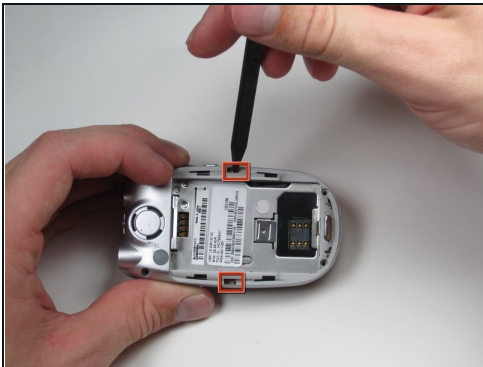
- Using the push pin, gently pry the top two screws of the cover off.
- The cover in the upper left of the back plate does not need to be removed.

Step 6



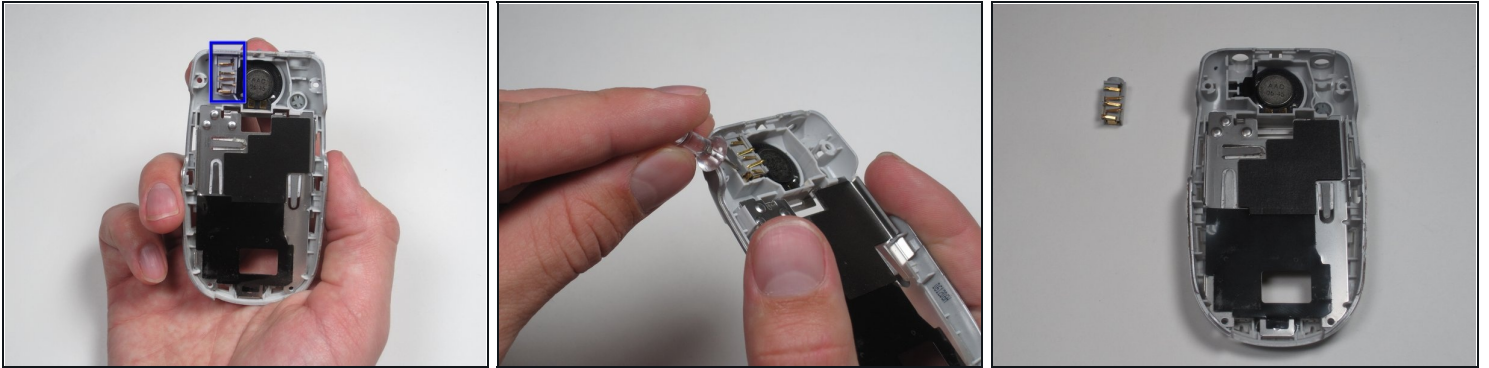
- At the corners of the phone, remove all four 6.0 mm Torx screws, using your screwdriver.

Step 7



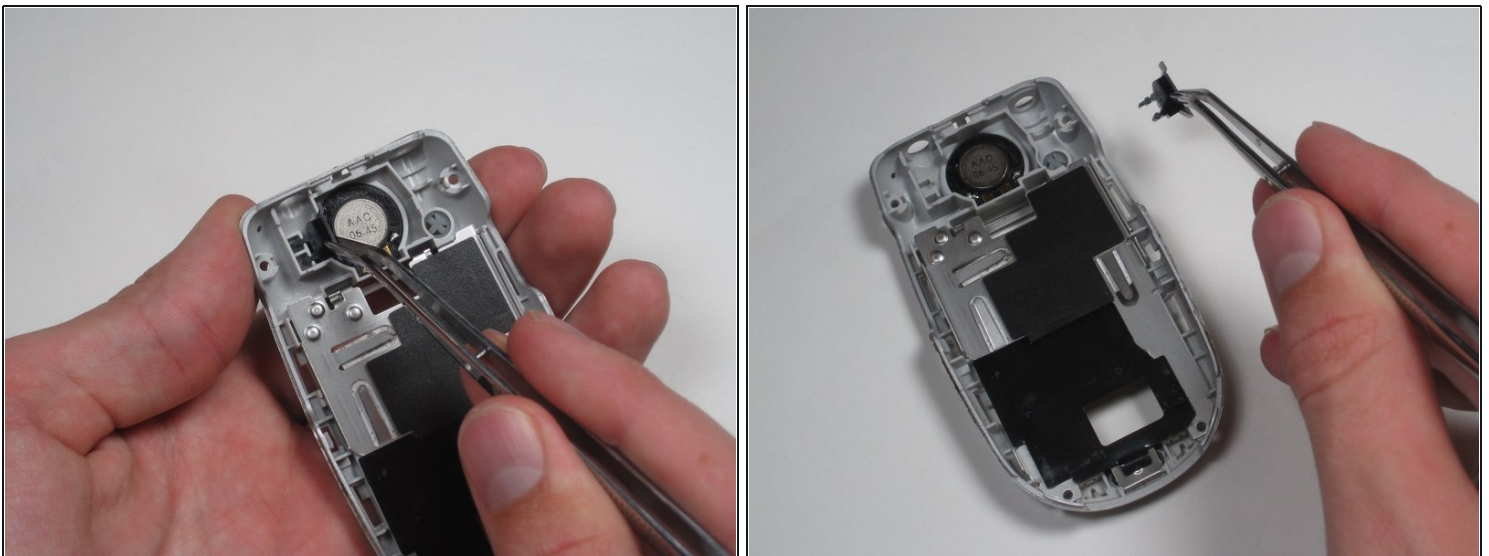
- Next, insert a spudger into the marked holes. One at a time pry away from the phone to release the internal tabs.
- Then, separate and detach the rear casing.

Step 8 — Headphone Jack



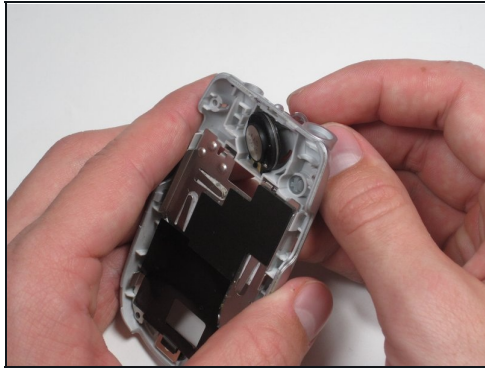
- Lastly, using a push pin, lift out and to the left to release the headphone jack assembly.
- Insert the new headphone jack assembly and repeat these steps in reverse order.

Step 9 — External Speaker



- Using metal tweezers, lift out the black plastic support piece from beneath the headphone jack.

Step 10



- Separate the speaker from the casing by pushing with a pin from the back (external) side, through the openings in the casing.

⚠ Be gentle! The wire mesh is durable, but it might suffer damage if you push too hard with the pin.

To reassemble your device, follow these instructions in reverse order.