



# Toshiba Click 2 Pro P35W-B3226 Teardown

i-7 4510U with 8GB of Ram and 128GB SSD

Written By: Sasa Macura



---

## INTRODUCTION

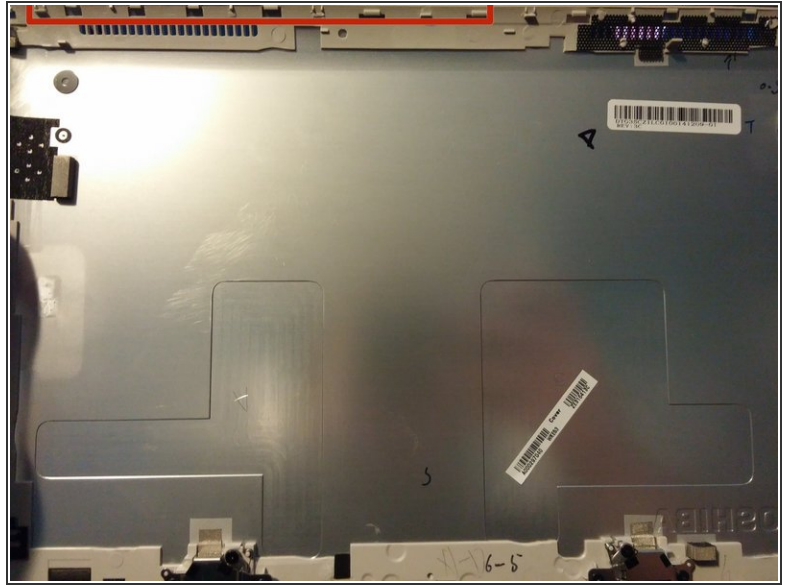
This guide will show how to take the back housing off the Tablet portion and the keyboard cover.




---

### TOOLS:

- [iFixit Opening Tools](#) (1)
  - [Small Phillips Head Screwdriver](#) (1)
-

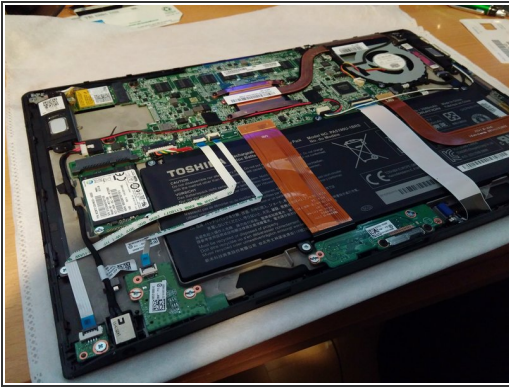
## Step 1 — Back Cover



-  After this procedure there seemed to be more back light bleed on my tablet. Not sure if it was there before so be careful.
-  Remove the tablet from the dock.
-  Find the best place to insert your plastic pry tool (I used the Micro-SD slot). Carefully go around the perimeter of the tablet and unclip the back cover.
- Take note off all the clips. The back cover is held in place with a ton of these all around.

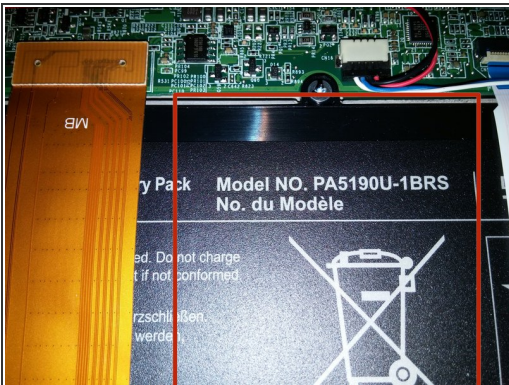


## Step 2 — Internals Part 1



- Once you have the back cover off you are free to replace what you'd like.
- Msata SSD Part #[MZMTE128HMGR-0000](#)
- M.2 2230 WiFi Model #[7260NGW](#)


## Step 3 — Internals Part 2



- Battery Model #PA5190U-1BRS
- Motherboard Part #DAOZC1MBADO REV:D
- Capacitive button/dock board Part #3TCZ1T80000
- ① Re-assembly in reverse order.

## Step 4 — Keyboard Disassembly




 With the keyboard separated remove all the screws in the bottom. The top 4 screws are longer than the bottom 6.

- Keyboard back cover Part #ZYE35CZ1BA0100140810-01 REV:3A
- Keyboard boards and weights.

## Step 5 — Keyboard Parts



- The keyboard dock board. Looks like there is a way to add a second HDD/SSD here but the connector is not soldered on.
- Keyboard board Part #CZ1D30E51001CC
- Mouse board, left-hand weight, front LED board.
-  Re-assembly in reverse order.

To reassemble your device, follow these instructions in reverse order.