



Disassembling Home Stereo and Theater

Philips MCD288

This introduction shows how to open the main set of a Philips MCD288/???. It should be the same for all /??s. The front panel might get buckled a bit.

Written By: Philipp



INTRODUCTION

This introduction shows how to open the main set of a Philips MCD288/???. It should be the same for all /??s. The front panel might get buckled a bit.



TOOLS:

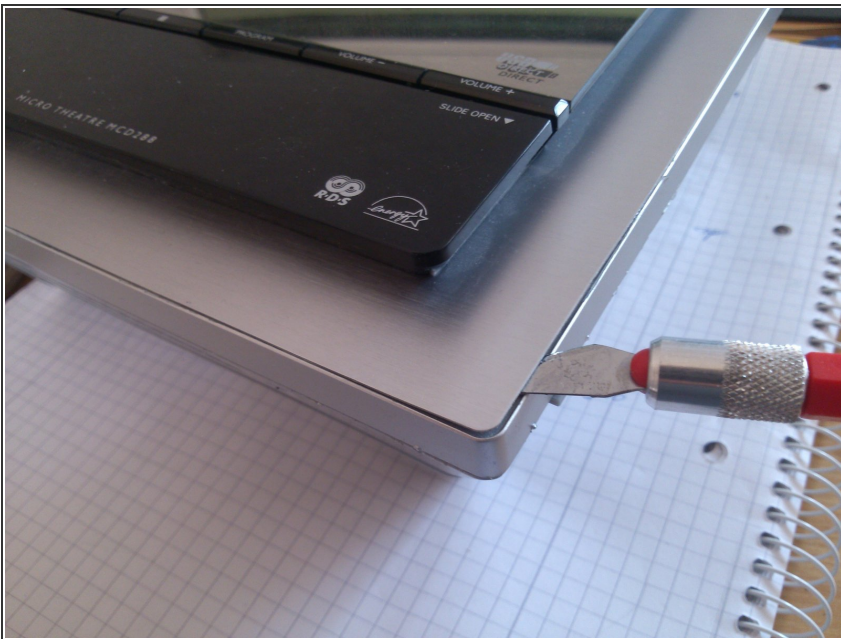
- [Essential Electronics Toolkit](#) (1)
-

Step 1 — Undo screws



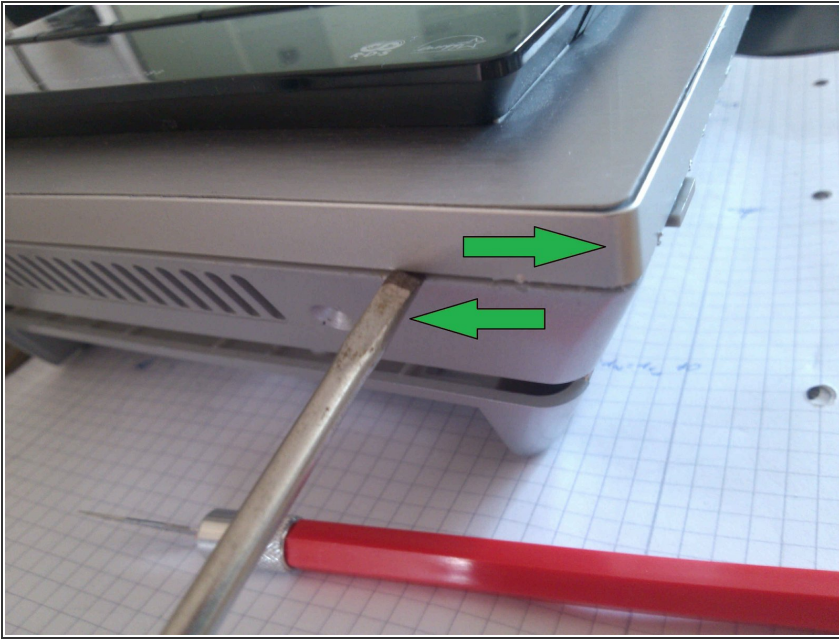
- remove the 4 screws on the bottem of the main set

Step 2 — Expose main latches



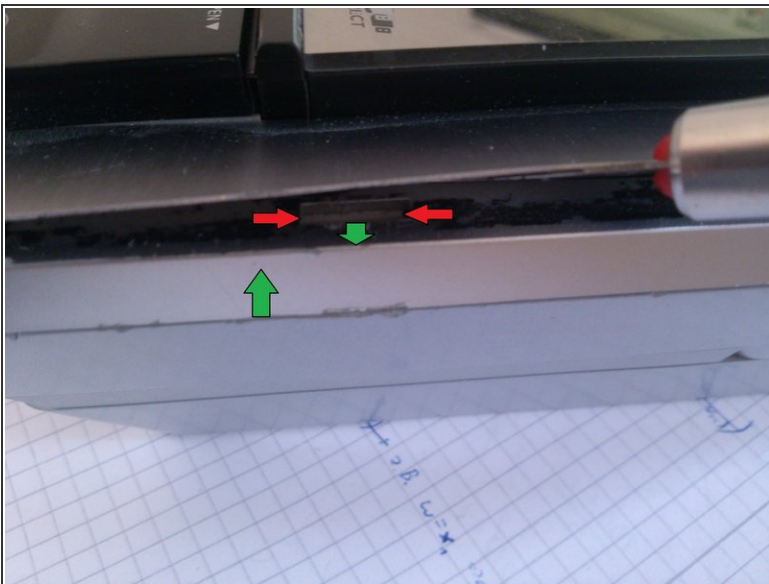
- Lift the aluminium pane at both sides with a spudger.

Step 3 — Start with the bottom edges



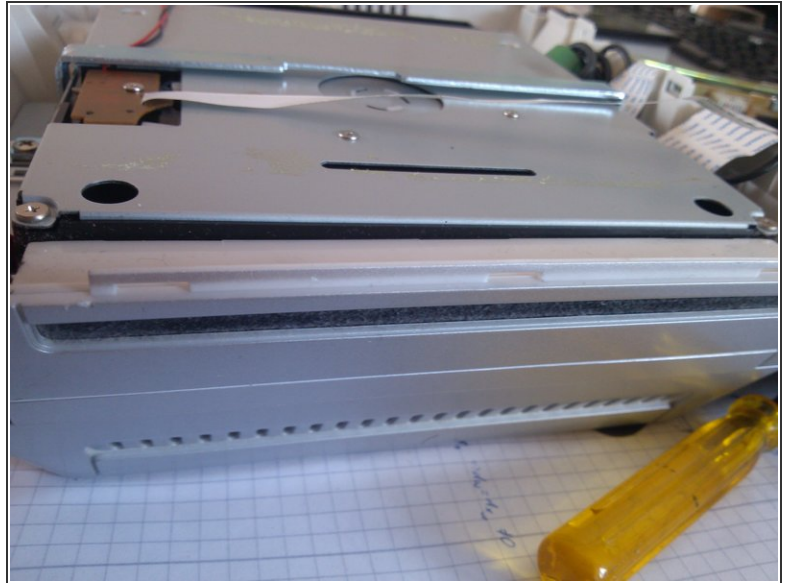
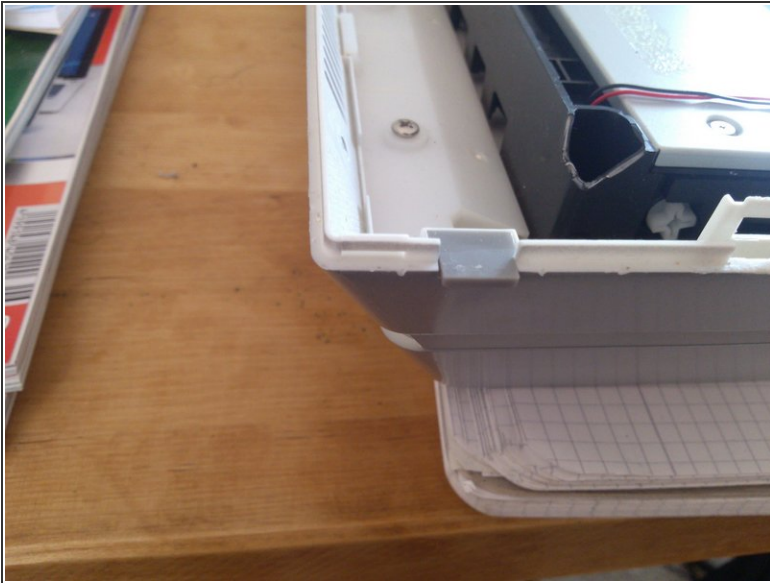
- To lift an edge, shift the front part at that edge towards the side while bending both parts apart (picture of the inside at step 5)
- hint: Start at the bottom, then continue with the sides according to step 4, because the bottom is only fastened by the screws of step 1, while the top has 3 extra latches (seen in step 5).

Step 4 — Losen main latches



- To detach the sides, pull a main latch towards you and keep on lifting the top part further.
- repeat for three latches on each side.

Step 5 — The inside



- These pictures show the latches on each edge and on the top of the set.

To reassemble your device, follow these instructions in reverse order.