



# MacBook Air 11" Early 2015 AirPort/Bluetooth Board Replacement

Replace the combination AirPort and Bluetooth card in a MacBook Air 11" Early 2015.

Written By: Sam Goldheart



# INTRODUCTION

Use this guide to replace your AirPort/Bluetooth board in the MacBook Air 11" Early 2015.



## TOOLS:

- [P5 Pentalobe Screwdriver Retina MacBook Pro and Air](#) (1)
- [Spudger](#) (1)
- [T5 Torx Screwdriver](#) (1)



## PARTS:

- [MacBook Air Mid 2013 to 2017 AirPort/Bluetooth Board](#) (1)

## Step 1 — Lower Case



- i Shut down and close your computer. Lay it on a soft surface top-side down.
- Remove the following ten screws:
  - Two 8 mm 5-point Pentalobe screws
  - Eight 2.5 mm 5-point Pentalobe screws
- i The special screwdriver needed to remove the 5-point Pentalobe screws can be found [here](#).


## Step 2



- Wedge your fingers between the display and the lower case and pull upward to pop the lower case off the Air.

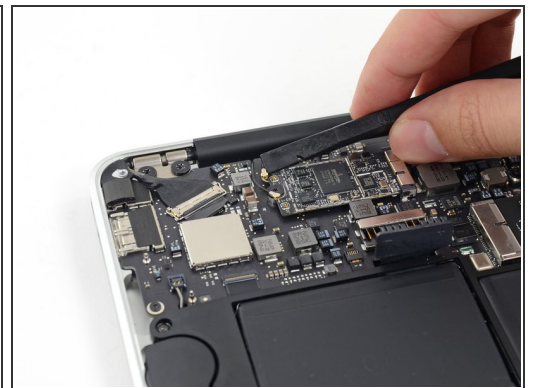
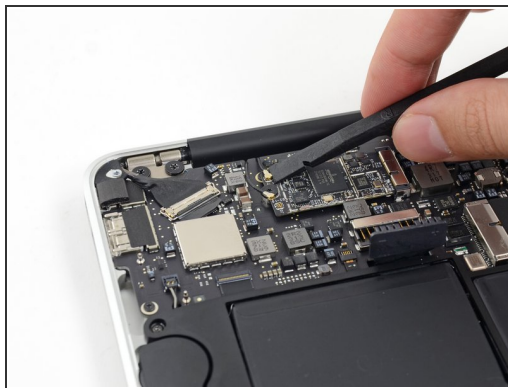
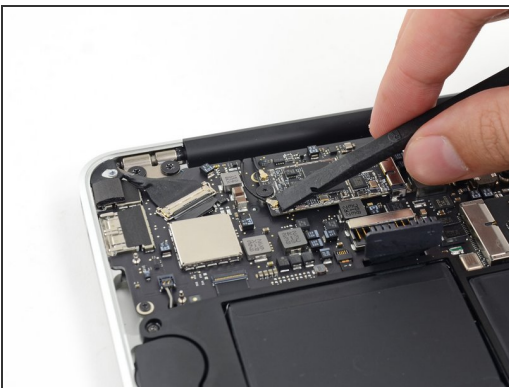
## Step 3 — Battery Connector



 In this step you will disconnect the battery to help avoid shorting out any components during service.

- Use the flat end of a spudger to pry both short sides of the battery connector upward to disconnect it from its socket on the logic board.
- Bend the battery cable slightly away from the logic board so the connector will not accidentally bend back and make contact with its socket.

## Step 4 — AirPort/Bluetooth Board



- Use the flat end of a spudger to pry both antenna connectors up from their sockets on the AirPort/Bluetooth card, and move them out of the way of the card.

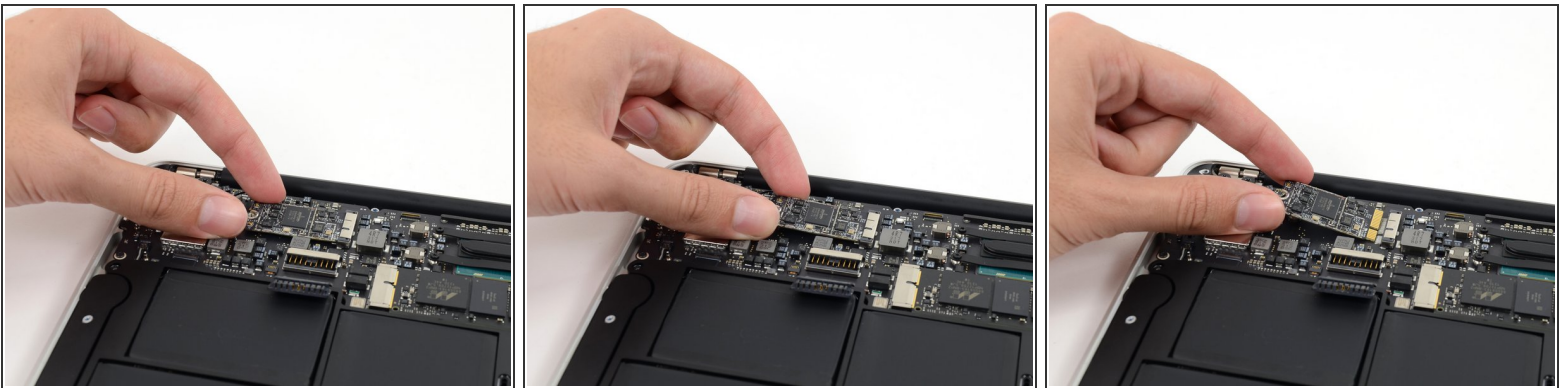


## Step 5



- Remove the single 2.9 mm T5 Torx screw securing the AirPort/Bluetooth card to the logic board.

## Step 6



- Slightly lift the free end of the AirPort/Bluetooth board and pull it straight out of its socket on the logic board.



To avoid damaging the socket on the logic board, do not excessively lift the free end of the AirPort/Bluetooth card.

To reassemble your device, follow these instructions in reverse order.